

MAY IS BEEF MONTH

Our Beef Producers Are A Great Source Of Pride —



**THANKS,
BEEF PRODUCERS!**

Fire up the grill
with some great
tasting T-Bone steak!



Hometown Market

112 W. Bressler • Bird City, KS • 785-734-2050



Serving the Beef Industry of
Northwest Kansas, Eastern
Colorado & Southwest Nebraska

Republican Valley Veterinary Clinic

Judy Mallett Baxter, DVM
Nathan R. Boyer, DVM
P. O. BOX 884

429 E. HIGHWAY 36, ST. FRANCIS, KS 67756
(785) 332-2262

rvvc@republicanvalleyveterinaryclinic.com
"Doing Business since 1968"

Salute the Beef Industry



Sainty Liquor

Corner of
US Highway 36 & Adams
St. Francis, Ks
785-332-3172

Monday - Thursday, 10:30 p.m. - 9 p.m.
Friday & Saturday, 9 a.m. - 11 p.m.

Beef N' Wine,
Beef N' Salad,
Beef N' Spuds.....
DINNER!

May is Beef Month

Thanks to the Kansas ranchers that are
committed to providing high quality
animal care in producing safe, nutritious
and wholesome beef for consumers
around the world.



St. Francis, Ks
Office • 785-332-2568

There's more to our beef
than award-winning taste.



**CALLICRATE
BEEF**
Celebrate goodness. Celebrate life.

X Voted "best of the
Springs Butcher Shop"
by the *Colorado Springs
Gazette*

ALL NATURAL!

• No Hormones • No Antibiotics • No Animal By-Products
are used during our feeding period.

www.ranchfoodsdirect.com

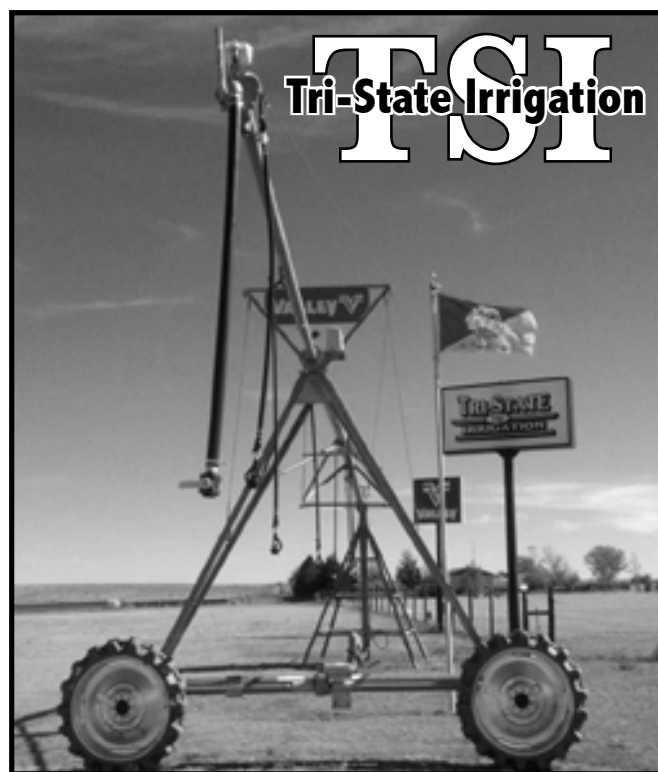
Callicrate Cattle Company

Custom Feeding and on-site Custom Slaughter
www.callicratecattleco.com

PO Box 748 ~ St. Francis, KS 67756
Phone 785-332-2053/Fax 785-332-3250
www.nobull.net

Our beef is better... Better for you.
Better for ranchers. Better for the community.

Supporting Agriculture

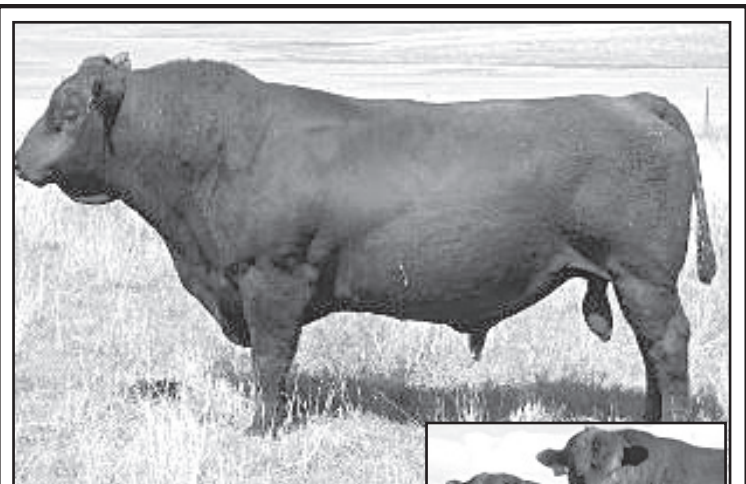


TSI
Tri-State Irrigation

- Pivot Servicing & Repair
- Pivot Insurance
- New Valley Pivot Equip.
- Sukup® Grain Bins
- Pivot Parts - All Brands
- Underground Pipe & Wire



(785) 332-2597 • 1502 US Hwy. 36 • St. Francis



Registered
Angus Bulls
for Sale



Crooked Creek Angus

Adam Jones
785-332-6206

Check us out at:
crookedcreekangus.com