

Hunters safety classes held

"It was a good class," Chet Gardner, Hunter Safety instructor said, following the four-day course given through the Kansas Wildlife and Parks.

Walker Janicke scored 100 percent on his test and received a computer game from Kansas Wildlife and Parks Department for his accomplishment.

Tim Stimbart and Mr. Gardner were the instructors with Dave Nicklos being a guest instructor.

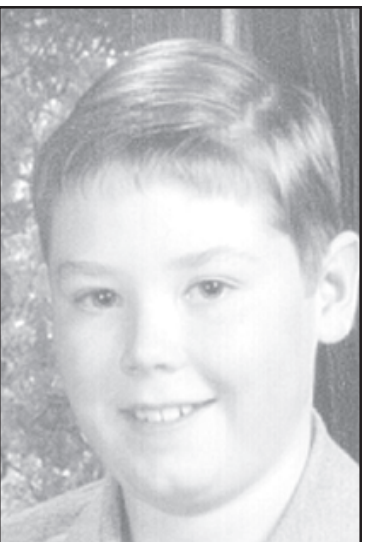
"We had a good time," Mr. Gardner said.

Students attending the class and passing the test this year were Lori Janicke, Walker Janicke, Nick Boyson, John Woodcox, Haily

Woodcox, Josh Teeters, Kathy Biggs, Lucas Raile, Jonathan Butler, David Butler, Chance Hobrock, Dylan Peter, Roxie Lambert, Ashlynn Lambert, Katie Lambert, Elizabeth Gienger, Zach Gienger, Penny Gienger and Francis O'Leary.

According to the law, people who are 27 years old or younger and want to hunt must carry a certification card along with their hunting license. Certification cards can be obtained only after the individual has completed a hunter education course and all hunters who were born on or after July 1, 1957, must complete the course.

The class was held on Aug. 8, 10, 11 and 12.



Walker Janicke

Top honor to Lauers

The 28th annual Riverside Rendezvous was held the weekend of Aug. 11, 12 and 13. This is one of the highlights of the year at Riverside with my former residents returning home to participate.

There were four flights involved in the competition with two teams vying for first place in the championship flights. The Lauer family took the top honors with father, Roger Lauer and his partner, Brad Leiker coming in with the same score as Gerald Lauer and his brother Greg Lauer

Rendezvous results

Championship flight: Roger Lauer/Brad Leiker; Gerald Lauer/Greg Lauer, tied for first place; Luke McKain/Kevin Finley; Matt Smull/Jeff Glad, tied for second and third place; Cale Rieger/Tyler Lampe, Tim Poling/Andy Poling, Derek Ross/Tyson Kohls, tied for fourth place.

First flight: Gene Dodd/Bill Landau, first place; Bud Rice/Greg Jones, Wade Quiggle/Brian Loyd, tied for second and third place; Rod Lampe/Jeff Oelke, fourth place.

Second flight: Justin McAtee/Jarad McAtee, first place; Mike Frewen/Dutch Schlesinger, second place; Rodney Bracelin/Keith Bracelin; third place; Bob Brenner/Larry Larsen, fourth place.

Third flight: Terry Rieger/Larry Hawks, first place; Derrick Tice/Jason Williby, second place; Mark Roesener/Keith James, third place; Gene Kincheloe/Tom Gardner, fourth place.

Hole prizes Saturday

Longest putt, number one: Bob Brenner

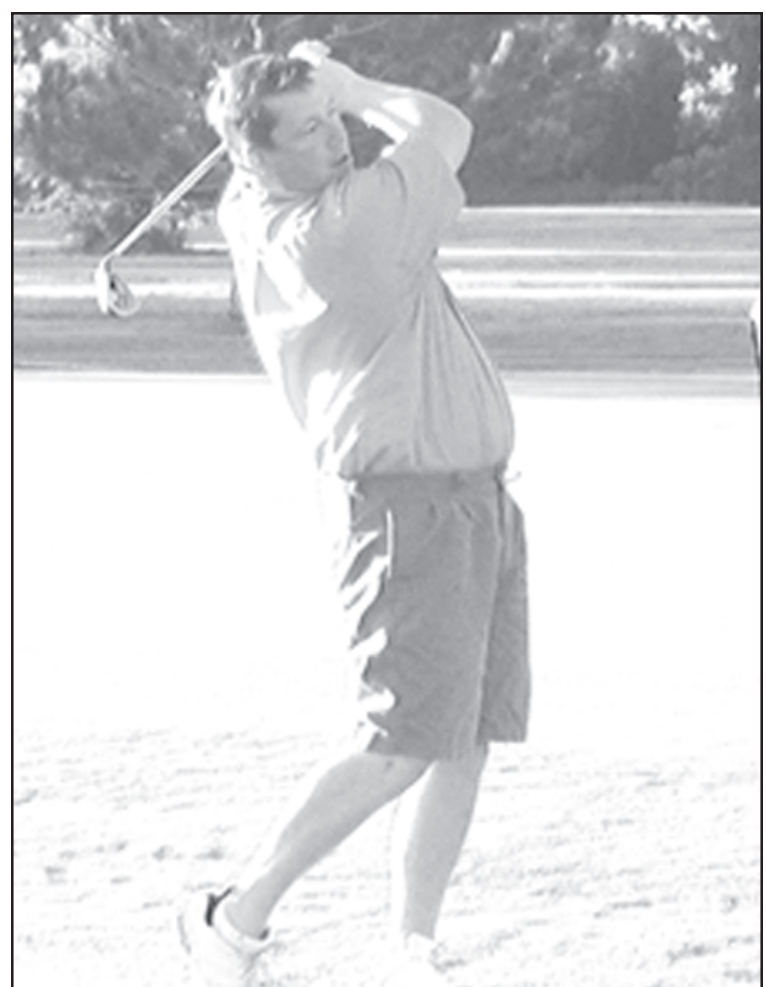
Closest to pin on second shot, number one: Dale Crabtree

Closest to any pin, number two: Rod Lampe

Long putt, number three: Roger Lauer

Long drive in fairway, number three: Brad Leiker

Closest to pin, number four: Noel Rath



WADE PORTER was one of the former residents who returned to St. Francis for the Riverside Rendezvous held at the golf club over the weekend.

Herald staff photo by Betty Jean Winston

Long putt, number five: Fred Roelfs

Closest to outhouse, number six: Jon Roelfs

Long drive in fairway, number six: Jon Roelfs

Closest to pin, number seven: Bob Smith

Closest to pin on second shot, number eight: David Reed

Long putt, number eight: Justin McAtee

Long drive in fairway, 50 years and older, number nine: Rod Lampe

Long putt, number nine: Monte Arends

Hole prizes Sunday

Longest putt, number one: Greg Jones

Closest to pin on second shot, number one: Kevin Finley

Closest to any pin, number two: Jon Roelfs

Long putt, number three: Dave Hilt

Long drive in fairway, number three: Colton Roesener

Closest to pin, number four: Dale Crabtree

Long putt, number five: Mark Roesener

Closest to outhouse, number six: Gerald Lauer

Longest drive in fairway, number six: Tyson Kohls

Closest to pin, number seven: Greg Lauer

Closest to pin on second shot, number eight: Steve Orth

Long putt, number eight: Tyson Kohls

Long drive in fairway, 50 years and older, number nine: Dale Crabtree

Long putt, number nine: Bob Brenner



PANDEMIC FLU — Susan Roelfs and Rita Keeker explain what the county is doing to prepare for a pandemic flu epidemic.

Herald staff photo by Karen Krien

County holds exercise to aid in the event of flu pandemic

The Cheyenne County Health Department along with the Cheyenne County Emergency Preparedness are continuing to work toward being prepared for any disaster. They are now preparing to evaluate the plans for a pandemic flu epidemic and volunteers are needed.

The county health department is responsible for the health and welfare of the residents of Cheyenne County.

The county health department will be participating in the Kansas Department of Health and Environment Pandemic Flu exercise on Thursday, Aug. 31. Pandemic means the flu is widespread across regions, countries and continents and experts agree an influenza pan-

demis is inevitable.

"After many months of preparation by community leaders and the health department, we are ready to test the system," Susan Roelfs, county health nurse, said, noting that the exercise is an assignment which the Kansas Department of Health and Environment has given to the department.

The exercise on the 31st will take place in the gym at the St. Francis Grade School, which is one of several point of dispensing sites for vaccine or medication administration that is done in a health care emergency event.

This practice clinic drill will determine how well the plan works and if revision to the plan needs to

be considered.

Volunteers are needed because manpower is important. Like any emergency, the volunteer's help is necessary to get the job done. The health department with the assistance of the courthouse staff will coordinate the clinic drill. This drill will arm those individuals responsible for the health of the community with the knowledge and confidence they can get the job done right.

Approximately, 30 volunteers are needed. so, if you would like to help assist a section leader, set-up, become a client family member or clean-up give the health department a call at (785) 332-2381

Small businesses offered seminar

Fort Hays State University's Kansas Small Business Development Center is continuing the tradition offering small businesses the resources necessary to compete against their large counterparts with its "Energy Efficient" seminar.

Guest speakers from Aquila, Kansas Gas Service, Midwest Energy Inc., and the U.S. Department of Agriculture's Rural Development division will explain energy audits, natural gas costs, energy-saving conservation projects and more.

Kansas Small Business Development Center is offering the seminar on three days in three locations including Thursday, Aug. 24, in Colby at Colby Community College. The other classes will take place on Aug. 22 in Great Bend at Barton County Community College and on Wednesday, Aug. 23, at Hays at Fort Hays State University. The seminar is free and open to

the public, but registration is required due to limited seating. Call (785) 628-6786 or email

sbdc@fhsu.edu before Aug. 17 to register. Refreshments will be provided.

Book Review

The Slippery Slope A Series of Unfortunate Events Lemony Snicket

Dear Reader,

Like handshakes, house pets, or raw carrots, many things are preferable when not slippery. Unfortunately, in this miserable volume, I am afraid that Violet, Klaus and Sunny Baudelaire run into more than their fair share of slipperiness during their harrowing journey up and down - a range of strange and distressing mountains.

In order to spare you any further repulsion, it would be best not to mention any of the unpleasant de-

tails of this story, particularly a secret message, a toboggan, a deceitful trap, a swarm of snow gnats, a scheming villain, a troupe of organized youngsters, a covered casserole dish, and a surprising survivor of a terrible fire.

Unfortunately, I have dedicated my life to researching and recording the said tale of the Baudelaire Orphans. There is no reason for you to dedicate yourself to such things, and you might instead dedicate yourself to letting this slippery book slip from your hands into a nearby trash receptacle, or deep pit.

With all due respect,
Lemony Snicket

IMMEDIATE OPENING Flatbed TRUCK DRIVER
Earn Up to 34 CPM
Must be able to be gone 2 weeks at a time
Must have Class A CDL With 3 Years Experience
CALL FOR INTERVIEW
308-334-5152 or 308-340-2319

L & L Implement Co., Inc.
Yuma, CO 970-848-5482
Wray, CO 970-332-4141
1-2004 8320, MFWD Loaded, 1,300 Hrs. \$118,000
2- 2005 Case IH 2388 2/30' Platform \$155,000
2- 2004 8520T, 1,179 hrs. \$138,000
12 Row Orthman Ripper w/Western Sweeps \$10,000
JD 9610, Loaded, Nice \$80,000
3-JD 1760 12 Row Planters starting at \$22,000
1996 JD 8400, 5,000 hrs., loaded \$72,000
JD 2003 4710 Sprayer, Loaded CALL
1996 JD 8400, 5,000 hrs., Loaded \$72,000
1-2004 8320 MFWD, Nice, 1,100 hrs. \$120,000
12 Row 8530 Orthman Cultivator w/Tracker Guidance \$10,500
MachineFinder http://www.machinefinder.com

ADM-Northern Sun
6425 Road 14 ~ Goodland, KS 67735
(785) 899-3700
PRODUCTION OPERATORS
ADM-Northern Sun is currently taking applications for full-time production shift operators for our sunflower processing plant with benefits. Part time without benefits is also available. Monday through Friday and occasional weekend hours as needed. Part-time employment could lead to full time productions shift operators.
◆ Medical/Prescription/Dental Insurance ◆ Wellness Program
◆ Life Insurance ◆ Advancement Opportunities
◆ Disability Insurance ◆ Pre-employment drug testing
◆ Flexible Spending Accounts ◆ Drug free workplace
◆ Credit Union ◆ Work-Life Program
◆ 401K ◆ Paid Vacation
◆ Overtime available based on job requirements ◆ On the job training will be given
We are looking for motivated, responsible people with a willingness to learn and the desire to advance within our company. Applicants must be dependable and a team player. Applicants must have a valid photo ID an original Social Security Card or original birth certificate. Women and minorities are encouraged to apply. Application packets are available to be picked up at ADM-Northern Sun between the hours of 7 a.m. and 4 p.m. Monday through Friday. We are located 5 miles West of Goodland on Hwy 24, turn north at Caruso. ADM is an equal opportunity employer.

NOTICE OF HEARING 2006-2007 BUDGET
The governing body of Unified School District 103 will meet on the 28th day of August, 2006 at 8:00 A.M. at USD #103 Board of Education Conference Room for the purpose of hearing and answering objections of taxpayers relating to the proposed use of all funds and the amount of tax to be levied. Detailed budget information (including budget profile) is available at district office and will be available at this hearing.
The Amount of 2006 Tax to be Levied and Expenditures (published below) establish the maximum limits of the 2006-2007 Budget. The "Est. Tax Rate" in the far right column, shown for comparative purposes, is subject to slight change depending on final assessed valuation.

Code	99 Line	2004-2005 Actual		2005-2006 Actual		PROPOSED BUDGET 2006-2007		
		Actual Expenditures (1)	Actual Tax Rate* (2)	Actual Expenditures (3)	Actual Tax Rate* (4)	Expenditures (5)	Amount of 2006 Tax to be Levied (6)	Est. Tax Rate* (7)
OPERATING								
General	08	1,442,831	20.000	1,518,898	20.000	1,507,579	306,586	20.000
Supplemental (General) (LOB)	08	167,000	9.350	189,623	10.362	390,355	285,039	16.362
SPECIAL REVENUE								
Adult Education	10	0	0.000	0	0.000	0	0	0.000
Adult Supplemental Education	12	0		0		0		
Bilingual Education	14	0		0		0		
Capital Outlay	16	117,621	4.000	111,418	4.000	387,180	0	0.000
Driver Training	18	2,376		1,248		1,092		
Extraordinary School Program	22	0		0		0		
Food Service	24	71,324		79,803		87,248		
Professional Development	26	38		355		29		
Parent Education Program	28	0		0		0		
Summer School	29	0		0		0		
Special Education	30	140,972		188,497		189,272		
Vocational Education	34	40,896		112,895		124,200		
Area Vocational School	36	0		0		0		
Special Liability Expense Fund	42	0	0.000	0	0.000	0	0	0.000
School Retirement	44	0	0.000	0	0.000	0	0	0.000
Extraordinary Growth Facilities	45	0	0.000	0	0.000	0	0	0.000
Special Reserve Fund	47	0		0		0		
Federal Funds	07	40,437		57,379		65,279		
Gifts and Grants	35	555		0		0		
At Risk (4Yr Old)	11	0		0		0		
At Risk (K-12)	13	0		33,630		51,800		
Declining Enrollment	19	0		0	0.000	0	0	0.000
KPERS Special Retirement Contribution	51	52,418		58,612		85,645		
Contingency Reserve	53	4,000		0		0		
Textbook & Student Material Revolving	55	7,384		3,165		0		
Tuition Reimbursement Fund	57	0		0		0		
DEBT SERVICE								
Bond and Interest #1	62	0	0.000	0	0.000	0	0	0.000
Bond and Interest #2	63	0	0.000	0	0.000	0	0	0.000
No-Fund Warrant	66	0	0.000	0	0.000	0	0	0.000
Special Assessment	67	0	0.000	0	0.000	0	0	0.000
Temporary Note	68	0	0.000	0	0.000	0	0	0.000
COOPERATIVES**								
Special Education	78	0		0		0		
TOTAL USD EXPENDITURES	100	2,087,852	33.350	2,355,523	34.362	2,869,679	591,605	36.362
Less: Transfers	105	198,194	xxxxxx	362,002	xxxxxx	394,000	xxxxxx	xxxxxx
NET USD EXPENDITURES	110	1,889,658	xxxxxx	1,993,521	xxxxxx	2,475,679	xxxxxx	xxxxxx
TOTAL USD TAXES LEVIED	115	629,375	xxxxxx	594,331	xxxxxx	591,605	xxxxxx	xxxxxx
OTHER								
Historical Museum	80	0	0.000	0	0.000	0	0	0.000
Public Library Board	82	0	0.000	0	0.000	0	0	0.000
Public Library Board Employee Benefits	83	0	0.000	0	0.000	0	0	0.000
Recreation Commission	84	28,490	1.500	30,405	1.500	29,086	26,131	1.500
Rec Comm Emp. Benefits & Spec Liab	86	0	0.000	0	0.000	0	0	0.000
TOTAL OTHER	120	28,490	1.500	30,405	1.500	29,086	26,131	1.500
TOTAL TAXES LEVIED	125	658,404		621,324		617,736		
Assessed Valuation - General Funds	128	\$16,855,338		\$16,856,227		\$15,328,311		
Assessed Valuation - All Other Funds	130	\$18,015,571		\$18,020,651		\$17,420,961		
Outstanding Indebtedness July 1 2004				2005		2006		
General Obligation Bonds	135	0		0		0		
Capital Outlay Bonds	140	0		0		0		
Temporary Note	145	0		0		0		
No-Fund Warrant	150	0		0		0		
Lease Purchase Principal	153	0		0		0		
TOTAL USD DEBT	155	0		0		0		

* Tax Rates are expressed in Mills
** Sponsoring District Only

Hal Anthony President
Roseanna McClure Clerk of the Board

(Published in The Bird City Times August 17, 2006)