

DEATH NOTICE

Esther Lawson

April 23, 1908 - Dec. 16, 2003

Esther Lawson, 95, died Dec. 16, 2003, in Sammamish, Wash. Family memorial graveside services will be conducted at 1 p.m., Saturday, April 17, at Norton Cemetery.

Memorial donations may be made in her memory to Norton Christian Church, 208 N. Kansas Ave., Norton, Kan., 67654 or to your favorite charity.

Clyde Ukele

Clyde Ukele, former Norton resident, died today at the Lutheran Home in WaKeeney.

Memorial services will be at 11 a.m., Wednesday, April 14 at Enfield Funeral Home.

READERS

The family of Dorothy Wolfe is requesting a card shower for her on her 85th birthday, Saturday, April 17. Mail will reach her at 201 W. Crane, Norton, Kan., 67654.

— Buffet dinner Saturday, April 10, 6-9 p.m. Norton American Legion. Open to Legion members and guests.

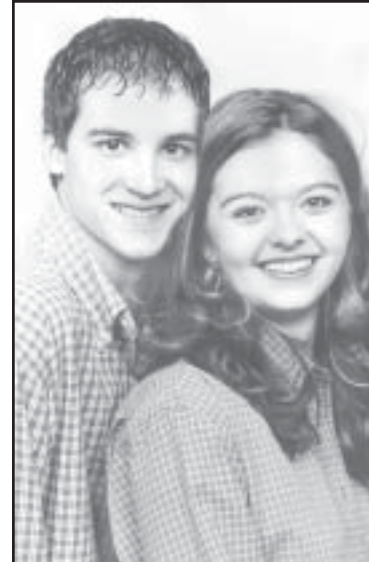
Tim Sprigg, a freshmen at Northwestern College, Orange City, Iowa, is a member of the Student Government Association,

serving as a food service committee representative. He is the son of Dave and Charla Sprigg, Norton.

The Duplicate Bridge Club met Wednesday evening at the Norton Manor for their weekly session with four tables present. Winners were Sam and Bonnie Manning and Claudia Bridges and Norman Walter tying for first and second.

— Precision Hearing will NOT be in Norton Wed., April 14. They WILL be in Tues., April 13. 4/9

Couple sets July 3 for ceremony



Joni Otter and Dustin Shellito

Joni Otter and Dustin Shellito have set July 3 as their wedding date. The ceremony will be at St. Joseph's Catholic Church in New Almelo.

Parents of the couple are Bridgett Otter, New Almelo and the late Doug Otter; and Randy and Marla Shellito, Rawlins, Wyo.; and Linda and Dave Porter, Phillipsburg.

Grandparents are George Jones and the late Beulah Jones, Norton; Marilyn and Marion Otter, New Almelo; Jerry Link and the late Marge Link, Phillipsburg; and Huston and Joann Shellito, Phillipsburg.

The bride-elect is a graduate

from Lenora High School and will graduate in May from the registered nursing program at Colby Community College. She is employed at Logan Manor, Oakley.

The prospective groom graduated from Phillipsburg High School. He is an licensed practical nurse at Logan County Hospital, Oakley. Mr. Shellito plans to attend the registered nursing program at Colby next year.

Club learns about first ladies

Mid-Century Study Club met April 1 with Ermalea Mason and Lynn Nelson serving as co-hostesses.

Darlene McEwen presented a book report on "First Ladies of the United States." Assisting with the program was Janna Schuckman.

Nineteen members answered roll call with "A Famous Person I Have Met".

The next meeting will be Thursday, April 15.

PUBLIC RECORD

Municipal Court

These transactions were taken from the records of filings in the offices of the Norton Municipal Court.

Traffic

April 7 — Ashley R. Tritt, Norton, speeding 30 m.p.h. in a 20 zone, court costs \$56, fines \$30.

April 7 — Katherine R. Kohr, Norcat, speeding 40 m.p.h. in a 30 zone, court costs \$56, fines \$30.

April 7 — Logan J. Mohr, Enders, Neb., speeding 445 m.p.h. in a 35 zone, court costs \$56, fines \$30.

April 7 — Joanna L. Zayac, Jennings, speeding 78 m.p.h. in a 65 zone, court costs \$60, fines \$48. April 7 — Oscar Millan-Lopez, Dodge City, speeding 80 m.p.h. in a 65 zone, court costs \$60, fines \$60.

April 7 — Connie K. Miller, Norton, speeding 54 m.p.h. in a 40 m.p.h. construction zone, court costs \$60, fines \$108. Amended by county attorney.

Wildlife and Parks

April 6 — Daniel A. Yost, Norton, driving vehicle off road, court costs \$60, fines \$35.

Small Claims

March 26 — Bob Sproul/County Line Feeders versus Bob Archer/Flying A Partner, \$722.50 plus costs and fees for unpaid bill for cleaning pens.

Marriage

March 8 — Jon Leland Stanton, Norton, and Kasey Lynn Lawson, Norton, certificate of marriage.

Criminal

March 18 — City of Norton versus Travys A. Porter, accident involving damage, appealed to district court from municipal court.

Building Permits

March 12 — Ted Sanko for Garrett's Plumbing and Heating, demolition of building at 211 East Main, no estimated cost.

March 22 — Damon Fredder, addition to house, garage, and driveway at 210 Pearl St., estimated cost \$10,000.

March 31 — Richard Martin, adding a roof and deck to mobile home at 406 East Wilberforce, es-

timated cost \$2,000.

April 1 — Gary Kats, constructing a storage shed at 908 Crestview, estimated cost \$5,500.

Ambulance

March 31 — Responded to motor vehicle accident in Norton at 8:27 p.m.

March 31 — Responded to a fall in Norton at 10:53 p.m.

April 1 — Responded to a fall in Norton at 6:30 a.m.

April 1 — Did a transfer to Kearney hospital at 9:01 a.m.

April 3 — Stood by at races at Elmwood Park in Norton 5:01 p.m.

April 4 — Responded to medical emergency in Norton at 8:45 a.m.

April 4 — Responded to medical emergency in Norton at 7:42 p.m.

April 4 — Did a transfer to Kearney hospital at 9:07 p.m.

April 6 — Responded to a patient with a lack of coordination in Norton at 12:09 p.m.

April 6 — Picked up air crew at airport at 1:47 p.m.

April 6 — Responded to motor vehicle accident in Norton at 12:56 p.m.

April 7 — Responded to cardiac problem in rural Norton at 7:07 a.m.

April 7 — Did a transfer to Hays hospital at 12:42 p.m.

MARKETS

At close of business April 8	
Wheat	\$3.78
Milo	\$5.11
Corn	\$3.09
Soybeans	N/A

A few things to consider when planting 'beans

The article this week is continuing the discussion of soybean production. As was discussed last week, soybean production is speculative by nature on dryland acres, but with the price of a bushel of soybean rising, less production is needed in order to be profitable.

For producers who have not planted soybeans in a while, there are a few things they should remember.

Do not plant soybeans on fields that were treated with atrazine this spring or past fall. There are a number of good weed control options to use for soybeans. However, there is widespread resistance to some herbicides such as Pursuit, so know your weeds and if there is any resistance before applying a herbicide. If a field exhibited resistance to a certain family of herbicides a couple of years ago, the resistance is still present. Many farmers will plan on using a glyphosate product on Roundup Ready soybeans. I would highly

About ag
Brian Olson,
K-State
agronomist



encourage the application of a pre-emergence herbicide to complement the glyphosate treatments.

As for seeding rates and fertilizer, producers should plant 100,000 to 130,000 seeds/A at a depth of 1 to 1.5 inches. Make sure the seeds are inoculated with the bacterium soybeans need to produce their own nitrogen. A starter application of 20 lbs of nitrogen/A will allow good early establishment and growth before the plant has a chance to start making its own. Other nutrients would be phosphorus, potassium, zinc, and iron.

Soybeans should not be planted on fields that already had soybeans or sunflowers. Sunflowers and soybeans share some of the same pests such as the soybean stem borer (also known as the long-horned beetle) which will girdle the inside of the soybean stem causing it to lodge close to maturity.

On another note, heavy infestations of brown wheat mite have been reported in Thomas and Logan county in both dryland and irrigated wheat fields. Populations will decline by mid-April when the mites lay their eggs, but an application of Dimate, Disyston, or methyl parathion may be needed if the yield potential is average to high and there are around 30 to 50 mites per plant.

To view all of the herbicide options or for a reference on soybean production, please acquire a copy of the publication "2004 Chemical Weed Control" or the "Soybean Production Handbook" which can be downloaded at the Web site: www.oznet.ksu.edu/agronomy-block2/ by clicking on the Production and Pest icon, or a copy can be acquired at your local extension office. Next week, I will try to make some sense of all of the glyphosate formulations currently on the market. Please e-mail me at bolson@oznet.ksu.edu if you have any questions or would like to see a newspaper article on a specific crop production topic.

SCHOOL CALENDAR

SENIOR HIGH:

April 12-16

Monday — Jay Singers, boys basketball meeting

Tuesday — Dance practice, 7 a.m.; Jay singers, 7:30 a.m.; FFA District Livestock at Hays, 9 a.m.; Cheer, varsity golf at Goodland, 2 p.m.; junior varsity golf at Ellis, 3 p.m.; varsity track at Smith Center, 3 p.m.; FFA crops at Fort Hays State University, 3 p.m.

Wednesday — Fort Hays State University Art Show, 8:30 a.m.; Goodland drafting contest

Thursday — Dance practice, 7 a.m.; State large group music festival at Colby; KU Honors banquet at Logan, 6:30 p.m.

Friday — Dance practice, 7 a.m.; FFA livestock judging at Colby, 8:30 a.m.; volleyball meeting, a.p.; Jazz, a.p.

Saturday — Regional forensics at Phillipsburg, FFA chapter banquet, junior high gym 6:30 p.m.

Sunday — FCCLA Spring Fling in cafeteria, 5 p.m.

Next Monday — Dance practice, 7 a.m.; Jay singers, a.p.;

Dance tryouts, 4 p.m.; 9th and 10 Grade Track at WaKeeney, 4 p.m.

JUNIOR HIGH:

Monday — Kays.

Wednesday — Faculty meeting, 7:45 a.m.; Lyceum at junior high gym, 8:45-9:30

Thursday — Track at Phillipsburg, 11 a.m.

Friday — Enrollment for 9th Grade

Next Monday — Driver's Ed. meeting, a.p.; League Scholar Bowl at Phillipsburg, 4 p.m.

EISENHOWER:

Monday — Star Meeting in conference room, 3:40 p.m.

Wednesday — Faculty meeting, 3:40 p.m.

Thursday — Grades 5-6 Level meeting, 3:40 p.m.


Next Monday — Site Council, 7 p.m.

ALL SCHOOLS:

Monday — Board of Education Meeting in Alice Tweed Office, 7:30 p.m.

Tuesday — Curriculum Coordinating Council in Alice Tweed Office, 7:30 a.m.







Big Brothers Big Sisters

2004 Bowl for Kid's Sake

Thank You Norton County Businesses, Organizations and Individuals for Your Support!





CHALLENGE BOWL WINNERS:

Bank Bowl — First Security Bank & Trust Co.
Church Bowl — Immanuel Lutheran Youth
School Bowl — Northern Valley Schools

All Creatures Vet Clinic
Almena State Bank
End Zone Sports and Office Supplies, Inc.
First Security Bank and Trust Company
First State Bank
KQNK
Lions Club
Moffet Drug

Norton County Council on Alcohol and Other Drugs
Napthali Lodge No. 310
Natoma Corporation
Norton Recreation Commission
Pepsi
Pizza Hut
Rainbow Lanes
The First State Bank
Valley Hope Association

A & A Machine
Adventures In Eating
Almena Market
Ambrosier Cattle Company
American Family Insurance
Bozie Barber Stylist
Bridges Group Insurance
Bullock & Yeager, Inc.
Connie and Co.
Craig Krizek, DDS
Dairy Queen
Don's Floor Covering
Dr. Glenda Maurer
Elicia's Hair Design

Engel's Sales and Service Center
Farm Bureau Financial Services
Felton's Ace Building Center
First Choice Insurance Agency
Hall's Clothing
J & R Liquor
Jim's Auto Parts
Kowpoke Supply
Ladies Eagles Auxiliary
Lamont Shirk, DDS
M. Miller Trucking
Mark Klein, DDS
Norton County Co-Op Association
Norton Flowers, Gifts & Greenhouse

Norton Homestore
Norton Sports Center
Novus Auto Glass Repair, Inc.
Pamida
Pure Prairie Natural Foods
Shear Magic
Norton Shop and Save
State Farm Insurance
The Bank
The Razors Edge
United Northwest Federal Credit Union
Walter Motor Company
Western Distributing, Inc.
Whispering Pines


April 6 — Eric Russell Farber, Norton, speeding 31 m.p.h. in a 20 zone, court costs \$60, fines \$36.

Congratulations to...

Dale and Shirley Sides

on their 40th Wedding Anniversary!

Please join the family in celebrating their 40th Anniversary at an Open House Saturday, April 10 2-4 p.m. Almena Community Building, Almena



At the

Norton Christian Church

We're PASSIONATE about a relationship with JESUS! Join us!

EASTER SERVICES

8:00 and 10:40 a.m.

Contact us if you would like to receive a free message about what Jesus' death and resurrection means to YOU by mail, email, audio tape, video tape or in person.
877-2871 ncc@us36.net