

SERVICES

Truck lettering, Call 1-800-886-2423. Pin striping, signs of all kinds including magnetic, vinyl, over 25 years of experience. Hot Brush, 800-886-2423, fax 785-734-2459 204 W. 4th, Bird City, KS 67731. —SF 4/00 tfn—

Piano works: Piano tuning and repair by qualified piano technician. Call for appointment, 719-346-5699 —G-tfn—

Mary Kay Cosmetics, Danna Kelly, 877-3284. —N-tfn—

Disc Rolling —Rolling on the farm. Call Ron Lewis, Eustis, NE. 308-486-3501. —N-tfn—

Frank's Trailer Sales, new and used horse and cattle trailers. Hill City, Kansas. Phone 421-2033. —N-tfn—

Plastering, drywall & stucco repair. 30 years experience. Call Mack 785-890-8051. —G tfn—

FREE 4-Room DIRECTV SYSTEM incl. installation. 4 Mo. FREE programming w/NFL Sunday Ticket subscription. Over 205 channels! Limited time offer. S&H, restrictions apply. 1-800-310-3681. —G/9/15—

SEED, FEED FERTILIZER

Custom baling and swath-ing. Big round bales for sale, irrigated cane and alfalfa. Shawn Curry 785-586-2297. —C/9/15 - 10/6—

Alfalfa seed. Kansas Common. 80¢/lb. Cleaned and bagged. 785-543-6171, Phillipsburg, KS. —C/9/8 - 9/22—

Alfalfa hay for sale, over 200 bales. Call 785-877-3027. —N/9/15—

For Sale: Certified 2137 and Trego carry-over seed wheat. Stutheit Farms, 1-785-877-3721. —N/9/29—

OKLON RYE, Plant now for more cool season pasture per acre, call Dave Renner. 785-891-3743. —G/9/29—

Seed Wheat—Reg. Stanton, Certified Trego 2137 and T81SV Carl Wahlmeier, 785-678-2476. —N/9/29—

AGRICULTURAL EQUIPMENT

Westfield hydraulic grain fill. Great condition, \$450. Call 785-626-3550. —C/9/15 & 9/22—

Two 300 gallon fuel tanks with 110 v. pumps and automatic nozzles. 785-443-1580. —C/9/15—

Orthman 8 row bean knife

From Taxes to Trenchers
MILES FURNITURE & RENTALS
•Water Bed Pumps
•Trash Pumps
•Air Compressors
•Jack Hammers
•Roto Rooters
•Concrete Saws & More!
393 F. St. Phillipsburg • 785-543-2422
Bob Moffatt and Kelly Link, Owners

and 10 row rod. JD 230 platform w/2 - 14' rake-up attachments. 785-899-2690. —G/9/22—

1998 8 row Gleaner corn head used very little. Excellent condition. \$17,000. 785-462-7825. —G/9/15—

2000 1293 Cornhead, wedge kit, end ext., hyd. deck plates, height sensor, harvest ready 36000.00. 2002 Brent 1084 grain cart, with tarp, 22000.00 both in excellent condition ph 895-899-6116 or 785-821-3628. —G/9/15—

For sale Auger box and Sams tubes for J.D. Sileage Choppers. Also other new parts. 785-943-5367. —G/9/8—

JD1253A & 853A row head for sale or lease. 785-899-2690. —G/9/29—

LIVESTOCK

Crooked Creek Angus. Registered Angus bulls, best bloodlines of the breed at affordable prices. Adam Jones, St. Francis, 785-332-3908 —SF 9/15 - 10/6—

7 year old APHA mare, sorrel/white \$1,800. Yearling colt, APHA, black/white, \$1,000. Phone 785-386-4531, 785-675-9184. —C/9/8 - 9/22—

Colts started. 40 year experience, quiet, soft hands. Started geldings for sale. Dun, Buckskin, Palomino and Bay weanlings for sale, sired by National Champion FQHR Stallion. Farrier Service, JR Ginther Stables. 785-322-5343. —G/9/22—

2 1/2 year old milking Alpine nanny, \$125; 1 1/2 year old Alpine nanny, open, \$85; two 5 month old Alpine billy goats, \$45 each. Call 669-2309, leave message. —N tf—

FARMERS

For sale: Noble 2000 series hoe drill, four section, 10-inch spacing, hydraulic transport. Call 308-265-7414. —N/9/15—

Custom swathing and large round baling. Call Arnold, Bryan or Dave Shearer at 785-669-2394 or 785-567-7161. —N/9/15—

PETS

AKC registered yellow pointing Labs, 2 males, shots, dew claws, dewormed, great bloodlines. 785-465-7414 after 5:00 p.m. —C/9/15 & 9/22—

Chocolate pointing labs, Hershey bloodlines, both parents from Chocobabs Pointing

Seed Wheat Cleaned 30 cents bu
Leave the tailings
Conveyers = total cleanout & no damage
Debearding Equipment Available
Tractor Trailer Accessible (BRING A CHECK)
Alec Yeager
Hendley, Neb. 68946
308-265-7466

Labs of Utica, KS. Ready September 15. Call 785-877-2024. —N/9/15—

Exotic Bird and Animal Auction, Sat., Oct. 2, 10 a.m., Dodge City, Ks., Fairgrounds. For information or consignment call 620-846-7046. —N/9/15—

For sale: AKC Weimaraners, \$300. Blues and silvers. Shots, dewormed, tails docked, dew claws removed. Call 785-877-2212 or 620-984-0118. —N/9/29—

Blue heeler puppies. Litter of 9. Parents working dogs. 785-694-3009.

FOR SALE

New solid wood kitchen cabinets, natural hickory for 9x12 kitchen. Discount price \$6,995. Call NW Furniture 785-672-4553 after noon. Cell 785-672-1011. —C/9/15 - 9/29—

Deer rifles. Remington BDL .270, \$500. Savage Model II .308, \$330. Browning 7mm-08, \$375. 785-672-4845. —C/9/15—

1995 Chevy Suburban, 424, 1500, high mileage, excellent condition, \$5,000. Older kiln, works, needs some work. 785-891-3538. —C/9/15 & 9/22—

Kitchen Aid washing machine, whisper quiet, best model, \$150. 785-687-4271, Rexford. —C/9/8 & 9/15—

Motorcycle leather apparel and accessories. Coats, vests, chaps and more. The Great Outdoors, 109 Grand, Atwood, Kan. 785-626-9425. —G/10/13—

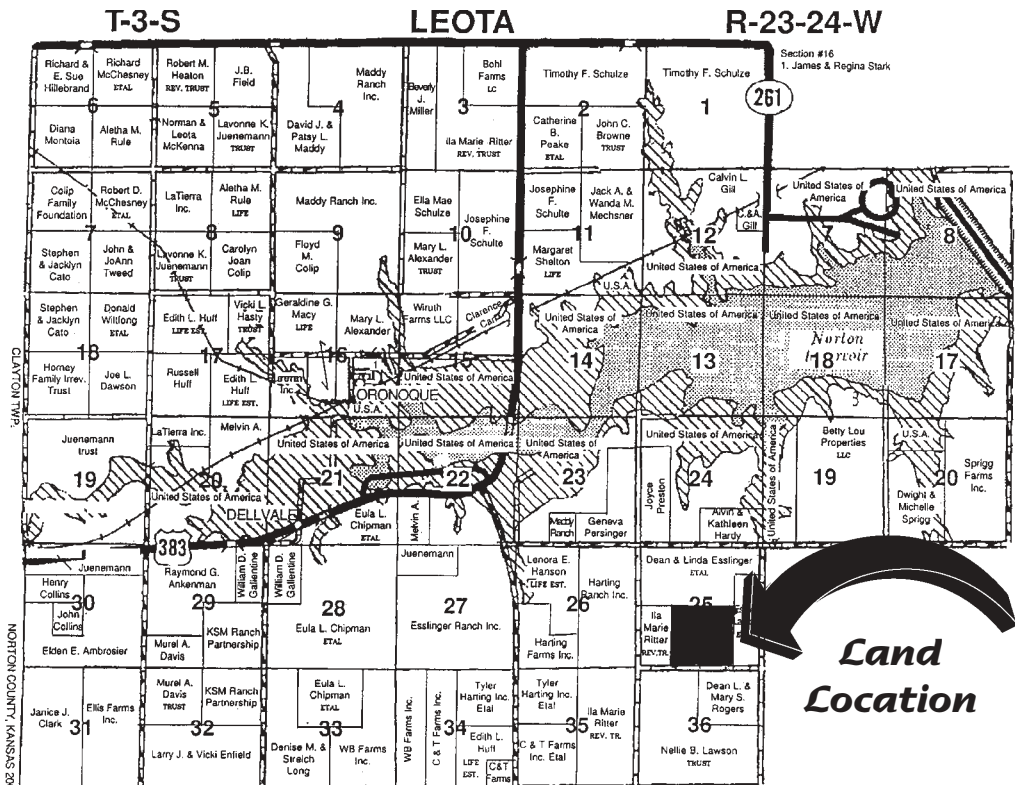
Hand made solid wood bunk beds. Call 785-475-4062 or 785-475-2206. —O/6/2 tfn—

Visit Dautel's new and used furniture store. 5 miles east of Goodland. Hours Monday - Thursday, 9 a.m. to 5 p.m. Friday 9 a.m. to noon. Now open on Saturday from 9 a.m. to 4:30 p.m. Call (785) 899-2938. —G-tfn—

Open House!
Sat. Sept 25th from 10:00-4:00
South Hwy 15 in Clay Center, KS or East Hwy 6 in Minden, NE
Enjoy refreshments while touring homes in all stages of production. Wardcraft homes have been custom built to your specs with 2x6 construction since 1971. View specs & plans on-line.
WARDCRAFT HOMES
Request our NEW 92 page color catalog with over 75 floorplans inside 1-888-WARDCRAFT or www.wardcraft.com

Land Auction
AUCTION TIME: 7:00 P.M.
TUESDAY, SEPTEMBER 28, 2004

Auction Location: Town and Country Kitchen Conference Room, E. Highway 36, Norton, KS



Legal Description: The West Half of the Southeast Quarter (W 1/2 SE 1/4) and the East Half of the Southwest Quarter (E 1/2 SW 1/4) of Section Twenty-Five (25), Township Three (3) South, Range Twenty-Four (24) West of the Sixth Principal Meridian in Norton County, Kansas. Land Location: From Norton, KS, 4 Miles South on Highway 283, 4 Miles West, 1 Mile South, and 1/4 Mile West to the Southeast corner of the property.

TAXES: 2003 Taxes were \$415.26. 2004 Taxes to be paid by Sellers. 2005 and subsequent years taxes to be paid by buyer.
MINERAL RIGHTS: Real Estate currently has 4 producing oil wells. Sellers will transfer ownership of mineral rights now owned by sellers.
F.S.A. INFORMATION: 42.1 Acres — Cropland; 46.8 Acres — CRP; 71.1 Acres — Grass, Waste & Roads; Wheat Base—42.1 Acres, 38 Bushel Yield
Conservation plan with the NRCS Government Conservation Office is in compliance and can be maintained by contour farming and minimum residue management. Buyer to receive 1/3 share 2005 Government Program payments if any are paid. Buyer to receive 100% of the 2005 CRP Payment. CRP Payment is \$31.57 per Acre.
ACREAGES: McMullen Real Estate has made every effort to have all information as accurate as possible. Acreages and bases are considered approximate according to (USDA) FSA Government Office.
CROPS: Cropland is planted to wheat. Buyer to receive 1/3 share of the 2005 Wheat Crop.
POSSESSION: Day of closing on all land not planted to Wheat. Wheat land after 2005 Harvest.
TERMS: \$7,000.00 down payment evening of Auction. Balance to be paid upon proof of Merchantable Title with Title Insurance Policy and delivery of a General Warranty Deed to the Buyer. final settlement to be within 30 days. Title Insurance cost will be shared 50% seller and 50% buyer. Announcements day of sale take precedence over printed material.
AUCTIONEER'S NOTE: Land is located 1 1/2 to 2 miles from Sebelius Reservoir. CRP Acres are in excellent condition for wildlife habitat. Oil production income to be transferred to the Buyer! For more information or viewing of the land call McMullen Real Estate at 785-877-3299.
AGENCY DISCLOSURE: McMullen Real Estate and its agents are representing the Seller only and will not be considered agents for the buyer. Bidders are urged to inspect the Real Estate and obtain additional information deemed necessary before purchasing the Real Estate. The Buyer takes the Real Estate in its present condition "As Is", "Where Is" subject only to facts of record. Announcements made day of auction will take precedence over any printed material.

SELLER: FOUGHT FAMILY

McMullen Real Estate
113 N. State • (785) 877-3299 • Norton, Kansas
Donald McMullen, Broker/Auctioneer, HOME: (785) 877-2028
Robert Wyatt, Auctioneer/Salesperson, HOME: (785) 877-2731

CRACKED WINDSHIELD???. We Can Replace It At Little Or No Cost To You!
Save \$100 On Your Deductible On A Windshield Replacement
HILL CITY BODY SHOP & DISCOUNT AUTO GLASS
Joe & Pat Johnson
312 West Main • Hill City, KS 67642
Toll-Free: (877) 421-5814

Prairie Wind PC's
Greg and Peggy Fyn
109 Norris Ave
McCook, NE 69001
Toll Free: 866-772-4740
Phone: 308-345-6322
gregfyn@prairiewindpc.com
www.prairiewindpc.com