



\$1,000 Shopping Spree

Sign up at these participating advertiser!
 This is your chance to **SHOP, SHOP, SHOP!**



Shopping Spree
 Is Your Budget STRETCHED To The Limit?
 LET US HELP WITH

FREE CHECKING

PLUS—SAVE WITH NO SERVICE CHARGE ON OUR CHECK CARD OR ATM CARD
 —ATM Service Available at Diamond Shamrock—



ESTABLISHED APRIL 1902
 P.O. Box 560 — 105 W. Main — Norton
 Phone (785) 877-3341



Pamida PHARMACY

505 W. Holme, Norton • 785-877-2133;
 Toll Free 866-249-7804

- **In-Town Delivery**
- **Free Mail Outs**
- **Competitive Pricing**
- **Fast Friendly Service**

We Accept Most Medicare Discount Cards

OPEN: Monday-Friday: 9 a.m.-6 p.m.
 Saturday: 9 a.m.-3 p.m.



Shopping Spree



Budweiser

AND THE EMPLOYEES OF WESTERN DISTRIBUTING URGE EVERYONE TO DRINK RESPONSIBLY

Western Distributing, Inc.

212 S. State, Norton, Kansas

THIS WEEK'S Specials

Keystone Light
30-Pack **\$13.99**

- Homegrown Corn on the Cob 6 for \$1.00

- Charmin Bundle Pack

(6) 4 Roll Packages — \$5.99

NORTON SHOP AND SAVE



313 W. MAIN, NORTON
PHONE: 785-877-2422
VISA, MASTERCARD, DISCOVER

It's Here!

LGLX 5550

- Driving Mode
- Speaker Phone
- Voice Command
- Digital Dialing



2-YEAR COMMITMENT \$59.95

1-YEAR COMMITMENT \$119.95

107 E. Main, Norton, KS
(785) 874-4718
Toll Free: 866-944-5225



AUTORIZED AGENT

WE DO IT ALL!

See Us For Service On All Makes And Models Of SUV's, Cars, Pickups and 4-Wheel Drive

Mad Slingers 4x4

207 E. Holme • Norton, KS • 785-871-2194

A SHOPPER'S DREAM

\$1,000

You can Win and Shop till you Drop!!

SHOPPING SPREE RULES:

1. To be eligible for the \$1,000 Shopping Spree, you can register at any participating merchant. You must be 18 or older. (No purchase required to win.)

2. Employees of sponsoring firms are not eligible at their place of business. Employees of *The Norton Telegram* and their immediate family are not eligible.

3. The prize awarded during \$1,000 Shopping Spree promotion will be in the form of scrip money. Scrip money will be good for merchandise only, no cash, at participating sponsors.

4. The deadline for entries is 5 p.m. Wednesday, September 29, 2004. Boxes will be withdrawn at that time.

5. The \$1,000 Shopping Spree prize drawing will be held on *Thursday, September 30, 2004, at Moon-*

light Madness in Downtown Norton.

Must be present to win. Date of drawing is subject to change without notice. In case of bad weather, the drawing may be held at an alternate location. One Grand Prize \$1,000 Shopping Spree Winner will be awarded.

6. Winner will have until Saturday, October 16, 2004, to spend the \$1,000 scrip money at participating businesses. The winner will notify *The Norton Telegram* when spending the Grand Prize money and allow a photographer to accompany them when making their purchases. Winner agrees that photos of winner and winner's family and a description of the shopping spree may be used for promotional purposes without limit. Winner agrees to release *The Norton Telegram*, sponsoring merchants and others associated with this promotion from any and all liability.

Register to Win a \$1,000 Shopping Spree

Register to Win \$1,000

Shopping Spree



Sign up at these participating advertiser! This is your chance to **SHOP, SHOP, SHOP!**

YOUR FULL SERVICE

PHARMACY



AND MORE!

- Professional Patient Counseling
- Free Mail and In-Town Delivery
- Convenient Location
- Free Coffee or Coke While You Wait
- 24-Hour On-Call Service

WE ACCEPT MOST MEDICARE
AND INSURANCE CARDS

MOFFET DRUG

102 S. State, Norton • 800-810-2721 or 785-877-2721

Shopping Spree

It's Our
One Year
Anniversary!

To celebrate and to add to our already incredibly low mattress prices — when you buy a premium "Symbol Mattress" set beginning September 4 thru September 25, you will receive a Bonus Certificate to mail in for a FREE set of fitted sheets designed to fit the new mattress you purchased from us.

THE REASONS TO BUY A SYMBOL MATTRESS ARE SIMPLE: Feature for feature-Symbol is the best VALUE; Symbol has one of the best WARRANTIES in the industry; Symbol manufactures their OWN PRODUCTS; LIMITED NATIONAL ADVERTISING means savings for you; Life is GREAT on a Symbol. Simple as that!

Symbol All of Symbol's products are made with pride in the USA

SANDER

FURNITURE AND GIFTS

W. Highway 36, Norton — 785-874-4974

Open M-F: 9-5:30; Wed. & Thurs. Eve till 8 p.m.

Saturday: 9 a.m.-5 p.m.

FREE DELIVERY ~ BRIDAL REGISTRY

Something For Everyone!

- Noon Buffet and Evening Specials
- Sunday Buffet, 11 a.m.-2 p.m Only-\$7.98
- Friday Evening—Rojas Mexican
- Catering—Meeting Rooms

Town and Country Kitchen

E. Hwy. 36, Norton, Kan.—785-877-3511

Home of the "Ultimate Pit Stop"

from Oil Changes to Overhauls—We Do It All!

EXPERT TECHNICIANS
SPECIALIZED TECHNOLOGY
GENUINE "OEM" PARTS

City Motors, Inc.



TOLL FREE 888-877-3234

E. HWY.—NORTON—877-3234

FOR SALE

9 1/2" x 11" computer paper white 20 lb. Premium quality bond, 2,500 sheets, micro-perf edge, \$35 a box. The Country Advocate, 1205 Main, Goodland, Kansas. (785) 899-2338.

— G-tfn —

Rubber stamps, custom made, The Country Advocate, 1205 Main, Goodland, Kansas. (785) 899-2338.

— G-tfn —

Bon Appetit Magazine's "Top Pick"! All-natural buffalo hot dogs. They're great! Locally grown! Call for Details 1-888-330-8686.

—G 9/22—

RECREATIONAL EQUIPMENT

2004 Yamaha Zuma scooter.

Excellent shape, 1,288 miles, very cheap on gas, fun to ride! 785-460-3415.

— C 9/15 —

1995 33' 5th wheel Escaper

rear kitchen 13'4" slide kitchen/livingroom queen bed slide full shower new tires 719-346-5307 or 719-342-5408 or please leave a message.

—G 9/8—

1970 Winnebago. 22', 104,000 miles, sleeps 6, self-contained, two air conditioners, everything works, \$1,500. Any questions, call 785-202-0298.

— O 9/15 - 9/22 —

CARS FOR SALE

2000 Mitsubishi Eclipse GT, 52,000 miles, 5 speed, new tires, \$8,950. 1989 Mercury Sable, 105,000 miles, runs good, \$2,000. 785-462-1141 or 785-460-3626 evenings.

— C 9/15 & 9/22 —

1999 Chrysler Concorde, 85k miles, new tires, excellent condition. 785-672-4707 day.

— C 9/15 - 9/29 —

1961 Studebaker Lark, 2 door sedan, 6 cylinder, flat head, been stored in metal building 20 years. Norman Dorsch 785-734-2713

— SF 9/15 —

1999 Harley Davidson

Sportster, 1200 cc, \$5,000. 1998 Ford Expedition, 4WD, 160,000 miles, \$8,000 (785) 475-2173, Justin.
— O 9/15 —

2001 Cadillac DeVille, silver, 77K miles, leather, loaded, extra clean. 785-673-4347.
— G 9/22 —

PICKUPS FOR SALE

1998 Chevy K2500, 34t, 4x4, diesel, excellent condition, 83,000 miles, new engine, great fuel mileage. Call evenings 785-462-3799.
— C 9/15 —

1998 Chevy S-10LT stepside pickup, 5 speed, air, cruise, alloy wheels, 30 MPG, 59k, \$6,500. See at 625 E. 7th St., Colby. 785-460-6637.
— C 9/15 —

1993 Ford 150. 1994 Chevy S10 Blazer-4x4. 2001 Dodge 1500. 785-443-3610.
— C 9/15 & 9/22 —

1997 Chevy Suburban LT. 3/4t., 4x4, leather, nice. 1995 Nissan Maxima, 4 door, great car. 785-460-6907.
— C 9/8 & 9/15 —

1989 Chevy van with TraTech

conversion, full power, 89,000 miles. Call Ray at 785-460-2794 or see at Colby Bowl.
— C 9/8 & 9/15 —

1993 GMC Sierra Z-71 4x4. New GM transmission. Looks and runs great. \$5,000. 785-890-2718.
— G 9/8 —

1995 Dodge PU 2500 Diesel reg. cab. High mileage. Runs good \$4,250. 620-384-9585.
— G 9/15 —

TRUCKS FOR SALE

1973 Chevy C-60 truck. 16' box, hoist, 9.00's, 366, 4+2, good truck, clean. Call evenings 785-694-2635.
— C 9/8 & 9/15 —

1992 KW900L 430 HP Detroit 265" wheelbase. Reliable doing lon hauls. 316-259-3232.
— G 9/15 —

WANTED

Custom swathing and baling with 36 foot canvas swather. Dual 18 foot heads makes one 5 foot or two 3 foot windrows per swath. Also have large round baler and Hesston Stakhandy - makes 3 ton stacks. 785-462-

2288 Colby, KS.
— C 9/1 - 9/29 —

Contracting now: High moisture corn. Call for basis and contracting information. 800-579-3645. Lane County Feeders, Inc.
— C 6/23 - tfn —

Would like to buy pre 1964 silver coins. 719-346-7127 evenings.
— G 9/22 —

HOUSES FOR SALE

REDI-BUILT 1484 Sq. Ft. \$69,900! Whirlpool tub, Truss floor system, basement ready and MORE. WOW! Call (866) 368-7198.
— N 9/15

House for sale or rent: 2 bedrooms, central heat/air. Close to town. Day, 785-877-3666; evening, 785-877-3928.
— N 9/22 —

FOR RENT

Studio apartments available for short or long term rental. Free high speed internet, all utilities, cable TV, weekly maid service. Call Ed at 785-462-3943 after 2:00 p.m.
— C 9/8 & 9/15 —

Nice Rental in Norton, 2 bedroom, new carpet and paint. Nice area at 406 North Brown. No pets. Call Connie Stromer, 785-877-3091.
— N tf —



WÜSTHOF

Precision Forged Perfection - Solingen, Germany - Since 1814

HOLLOW-GROUND SANTOKU KNIVES FROM WÜSTHOF *A True Cooking Phenomenon!*
Chef's everywhere have finally discovered "that one great knife." Alternating "hollows" on each side of the super-sharp blade reduce drag allowing the knife to glide effortlessly as you cut. Chopping, mincing, dicing and slicing. By far, the most versatile knife in the well-equipped kitchen. Get your today and see what all the excitement is about!

CLASSIC Santoku Knives



Precision forged, hi-carbon, stain-resistant steel with traditional, triple-rivet handles & full tang construction. Available in NEW 5" and the now-famous original 7" blade lengths. Each individually gift boxed.

A) 5" Santoku Knife (#4182) Regularly \$100 SALE: \$74.99
B) 7" Santoku Knife (#4183) Regularly \$120 SALE: \$89.99

SAVE OVER \$200 ON OUR BEST-SELLER! CLASSIC 8 PIECE KNIFE BLOCK SET



Five essential knife styles, kitchen shears and honing steel in our 17 slot knife block (6 stock knife slots in the base) with room to expand. (Plenty of room for either or both of the Santoku knives above).

\$299.99

- Contains:
- 3 1/2" paring knife,
- 4 1/2" utility knife,
- 6" sandwich knife,
- 8" bread knife,
- 8" cook's knife,
- 9" steel,
- combo open shears,
- 17 slot block (#1800)

Regularly \$510.00
SALE: \$299.99



315 Norris Avenue - McCook, NE 69001
Phone: 308-345-4848 - Email: info@knowlenandyates.com
MAIL ORDERS WELCOME!



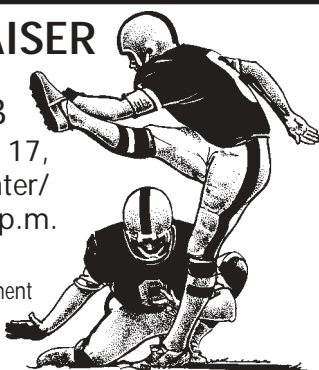
TAILGATE FUNDRAISER

SPONSORED BY

NORTON LIONS CLUB

All Fans Are Invited September 17, 2004 Preceding the Smith Center/ Norton Football Game 5-6:30 p.m. East End of the Football Field

Proceeds for Elmwood Park Playground Equipment
Serving Hamburgers, Beans and Chips
Adults: \$4.00; Children 12 & Under: \$2.50



Gorman Tarps

"We've Got You Covered"

Tarps manufactured for:

- Grain Trailers
- Flat Bed Trailers
- Farm Trucks & Equipment
- Custom Needs
- Complete Kits & Replacements Parts Available



AUTHORIZED SHUR-LOK DEALER

138 E. Commercial, Oberlin, KS 67749

1-888-765-8277

For rent: Nicest, cleanest apartments and houses in Norton. Call 785-877-5253 or 785-871-1990.

— N tfn —

Nice, quiet 2 bedroom apartment, utilities paid, washing facilities on site. 785-877-6060 or 785-669-2466.

— N tfn —

2 & 3 bedroom houses. 1 bedroom apt. Stove and refrigerator. Washer and dryer hook-ups 890-6538.

—G tfn—

2 and 3 bedroom houses very clean, nice. In Goodland, Kan. Call 785-899-6129.

— G tfn —

Two and Three bedroom houses in Goodland. Deposit and Lease required. Call 899-5231 or 821-2803.

—G tfn—

One bedroom furnished

apartment. Utilities paid 899-3369.

—G tfn—

AUCTIONS

McMullen and Wyatt Auction, Land Auction for Fought Family, 7 p.m., Tuesday, Sept. 28. Land is located 1 1/2 to 2 miles from Sebelius Reservoir which includes cropland, CRP and 4 producing oil wells. For more information contact Don McMullen, 785-877-2028; Robert Wyatt, 877-2731 or McMullen Real Estate, 785-877-3299.

— N 9/22 —

McEwen Auction, Taylor and Shearer, Saturday, Sept. 18, 9 a.m. at 4-H building, Park Street, Norton. Selling 1988 Olds, yard and garden equipment, tools, antique furniture, antique and other kitchen items, dishes, antique advertising items, appliances and many other items.

For more information contact Duane McEwen at 785-877-3032 or visit website www.krvn.com, select Auctions,

and choose 9/18.

— N 9/15 —

TO GIVE AWAY

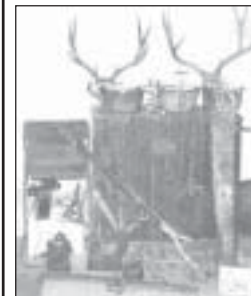
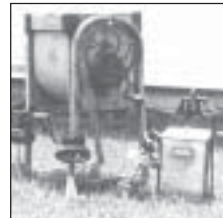
4 kittens. Will be 7 weeks on the 4th of September. See at Colby Trailer Village #36.

— C 9/8 —

Merle Taylor Estate • Merle Shearer Saturday, Sept. 18 — 9:00 A.M. 4-H Building, Park Street, Norton, Kansas



Askew Saddle Est. 1866



VEHICLE:

1988 OLDSMOBILE ROYALE BROUGHAM DELTA 88 — 4 Door Car, High Mileage, Air Conditioner, Good Tires

- Yard and Garden Equipment
- Antique Advertising and Specialty Items
- Tools & Shop Equipment •Antique Shop Items
- Wood •Music Items •Toys •Collections
- Feature Item—W Harman Safe on Rollers
- Lamps and Clocks •Antique Furniture
- Furniture •Appliances •Antique Kitchen Items
- Kitchen Items •Dishes •Household Accessories
- Wall Hangings, Vases and Figurines
- Paper Goods •Novelties •Linens

AUCTIONEER'S NOTE: This is a 2 Merle Sale! Merle Taylor was a person who enjoyed auctions and selling any kind of item. He has had several sales in the past but this is deemed the final one as Merle has died from a battle with cancer. We shall miss him as #13 at auctions. The items he had left went very well with Merle Shearer's items. Merle Shearer is a long time resident of the Almena Community and is now a resident at the Andbe Home. Merle's family describes him as "a person who found it very hard to throw anything away!" I told them that was the kind of person we like to sell for! Do join us for this auction. The only place else you should be is at Fort Hays State University for the half time of the football game where my son Dustin is to be inducted into the Sports Hall of Fame.



Duane R. McEwen

Auctioneer—Salesperson
East Hwy. 36—601 East Holme
Norton, KS 67654

Visit Our Web Site @ www.krvn.com select Auctions, and choose 9/18 for pictures 785-877-3032

Second Anniversary Open House and Customer Appreciation



Countryside Veterinary Clinic of Norton invites you to an Open House to celebrate their Second Anniversary.
Wednesday, September 15, 2004 — 9 a.m.-4 p.m.

ATTENTION DOG OWNERS!

Countryside Veterinary Clinic of Oberlin and Norton is pleased to announce we are now dealers for SIR JOHN'S dog food. Come in on September 15 at our office in Norton and visit with our company rep, Bud Johnston, and receive a free sample of the dog food and register for a drawing. We will be giving away two bags of dog food! There will be a gift for all who attend.

COUNTRYSIDE VETERINARY CLINIC OF NORTON, P.A.

MARK R. OLSON-DVM • TRAVIS A. HISSONG-DVM
SARAH KETTERL WHITE-DVM • AARON R. WHITE-DVM
Norton—785-877-2411 • Oberlin—785-475-3808

Office Hours: 8 a.m.-5 p.m. Monday-Friday, 8 a.m.-Noon Saturday
Toll Free 1-800-3808 24 Hour Emergency Service

free

seminar about knee & hip pain

Join us and learn about the causes and treatments for knee and hip pain, including information about medicines, foods and exercises.

Wednesday, Sept. 15, 2004

11:30 a.m. — Alma Senior Center,
608 Main Street

2:30 p.m. — Norton Public Library,
408 N. Norton

If you are interested in eating lunch at the Senior Center in Alma, call them by 9:00 a.m. at (308) 928-2149