

SERVICES

Plastering, drywall & stucco repair. 30 years experience. Call Mack 785-890-8051.

— G tfn —

FREE 4-Room DIRECTV SYSTEM including standard installation. 3 MONTHS FREE HBO & Cinemax! Access to our 225 channels! Limited time offer. S&H, restrictions apply. 1-800-310-3681.

— G 11/10 —

Partners in Grime. House-keeping - Commercial - Construction cleanup - Yard work. Great rates. Painting. Call C.C. 785-821-1060.

— G tfn —

SEED, FEED FERTILIZER

Round bales - milo and wheat \$35/ton. Round bales - straw \$20/ton. 785-462-7817.

— C 11/10 & 11/17 —

Alfalfa for sale. 180 bales, 1st, 2nd, and 3rd cuttings. Alfalfa is pure and clean, no weeds. Call 785-877-3027.

— N 11/17 —

AGRICULTURAL EQUIPMENT

1480 International Combine w/24' platform and several new parts. \$10,000. 785-899-2957.

— G 11/10 —

PETS

Apricot point Siamese kitten. Also other kittens to give away. 785-675-3522 after 3:00 p.m.

— C 11/10 —

German Shorthaired Pointer pups. AKC registered, males and females, good hunting mother. 785-460-6749.

— C 11/10 — 11/25 —

AKC miniature Dachshunds. Male and females, ready for Christmas. 785-460-6749.

— C 11/10 —

For sale—2 registered English, Blue Tick coon hounds, litter mates, 1 male, 1 female. Call 785-871-1308 or 785-877-3718.

— N 11/17 —

For Sale—Rabbits, nest

boxes, cages w/self-feeders and waterers. Good pets/4-H projects. Siamese Satin and Rex breeds. Good meat rabbits, 1-785-475-2470.

— N 11/19 —

Registered Shiba Inu puppies. Some ready to go by 11-11-04 other ready by 11-25-04. All wormed and up to date on shots. 785-462-8280 evenings.

— G 11/10 —

Registered French Bulldogs. 2 female ready to go by 11-27-04. 785-626-3646.

— G 11/10 —

MUSICAL INSTRUMENTS

Marshall AVT 50 guitar amplifier. 50 watts, two channels, footswitch, like new, \$425 O.B.O. 785-891-3770.

— C 11/10 —

Upright piano, very good condition. 785-460-6984 or 443-2265.

— C 11/10 —

FOR SALE

Cut your own firewood. FREE! 877-3053.

— N 11/10 —

Washer and electric dryer, good condition, \$250/set O.B.O. 785-460-0436.

— C 11/10 —

Bunkbed white tubular steel twin top. Double futon bottom includes mattresses bedding. \$75 leave message. 785-890-5976.

— G 12/31 —

Ruger #1 with reloading supplies, Striker 516SAK .234 cal, tree stands, Preymaster digital caller with 5 cards, Hitchhauler for 2" receiver 785-475-7080.

— O 11/10 —

8' beige couch, good shape \$50. Com Tech tools with extras, \$500 O.B.O. Panasonic fax machine, \$65. Credit card machine for sub-lease. Serious inquirers only. 785-890-9252 or cell 785-899-4180.

— G tfn —

Dodge slant six engine. Complete 90,000. Make good pump engine. \$200. Al Lemke evenings 308-423-2673.

— O 11/3 —

Men's Don Juan Stainless Steel watch bands available at Ray Jewelry in Oberlin.

— O 11/10 —

Frustrated with high shop heating costs? Consider an Omni Waste Oil heater. Turn used oil into free shop heat. Zero smoke. Approximate 1 hour annual cleaning. 785-673-3377. 785-673-5509.

— C 10/20 - 11/10 —

Visit Dautel's new and used furniture store. 5 miles east of Goodland. Hours Monday - Thursday, 9 a.m. to 5 p.m. Friday 9 a.m. to noon. Now open on Saturday from 9 a.m. to 4:30 p.m. Call (785) 899-2938.

— G tfn —

9 1/2" x 11" computer paper white 20 lb. Premium quality bond, 2,500 sheets, micro-perf edge, \$35 a box. The Country Advocate, 1205 Main, Goodland, Kansas. (785) 899-2338.

— G tfn —

Firewood: By the pickup load or by the cord. You pickup or we deliver. Van's Tree Service, Oberlin. 785-475-1100.

— O 11-10 - tfn —

Rubber stamps, custom made, The Country Advocate, 1205 Main, Goodland, Kansas. (785) 899-2338.

— G tfn —

Almost new, 26 ton log splitter. Briggs Horizontal-Vertical split. 8 1/2 horsepower. I-C motor. 785-678-2669.

— O 11/10 —

RECREATIONAL EQUIPMENT

1996 Harley Davidson Sportster 883. Call 785-460-6564.

— C 11/10 —

1996 YZ125 motorcycle, good condition. 1997 CR250 motorcycle, good condition, new engine. Call 785-675-1349 or 785-675-3069.

— C 11/3 & 11/10 —

1983 Honda 750 motorcycle. \$700 O.B.O. 620-397-5960.

— G tfn —

CARS FOR SALE

1976 Buick Park Avenue, 4-door, 125,000 miles, many new parts, excellent shape; 1965 J-2000 Jeep 4/WD pickup, 65,000 actual miles; 1984 Dodge Rampage, front wheel drive, 2.2 Mitsubishi engine, automatic, no rust, uses no oil; 1993 F-350 XLT crew cab, 1 ton dually, 7.3 turbo diesel, 5-speed. Call 1-785-475-2470.

— N 11/17 —

1981 Chevy 4x4. Needs engine work, \$600. 785-693-4206.

— N 11/10 —

1987 Chevy 1/2T van, Class 3 hitch, many new parts, must sell, \$1,500 OBO, 785-322-5665.

— N 11/10 —

1992 Explorer 4x4, low miles on new Jasper engine and transmission. New Michelins, brakes, shocks, Borla exhaust, many extras. \$6,500 OBO, 785-734-2707.

— SF 11/10-12/1 —

1985 Parisienne, 43 K, Chevy V-8, new Michelins, air shocks, extra clean. \$4,500. OBO 785-734-2707.

— SF 11/10-12/1 —

1990 Dodge Daytona. 4 cylinder, 5 speed manual, runs good. Call 785-460-6564.

— C 11/10 —

2003 PT Cruiser. Plum, heated leather seats, sun roof, fully loaded, 11,000 miles. 785-673-4828.

— C 11/10 & 11/17 —

1985 Ford Brougham. 4 door, low mileage, make reasonable offer. 785-462-2679 evenings.

— C 11/10 —

1993 Ford Aerostar extended van. 785-460-6984 or 785-443-2265.

— C 11/10 —

1972-1976 GMC cars, wagons, sedan and 2 doors. Call 785-672-7651.

— G 11/10 —

PICKUPS FOR SALE

1985 Ford F-150. 4x4, 300, 6 cylinder, recent overhaul, runs good, \$1,600. 785-462-7817.

— C 11/10 & 11/17 —

1984 Chevy 1/2 ton pickup, 350 engine, 2WD, automatic, topper. Call 785-460-6564.

— C 11/10 —

1997 Eddie Bauer Expedition. 4WD, 5.4L, tow package, air suspension, 6-CD, extra clean, \$10,750. 785-460-2567.

— C 11/10 —

1990 Dodge Ram Charger. 4x4, 318, 135,000, running boards, lock out hubs, runs good, \$1,500. 785-824-3486.

1997 Ford F-150. 4x4, extended cab, 40,000 original miles, excellent condition, cruise, power everything. 785-462-7566.

— C 11/10 —

1994 Chevy Suburban. Brown, 130k miles, interior and exterior excellent condition. 785-586-2313.

— C 11/10 & 11/17 —

1977 Chevy Silverado, red, short box, 4WD, 350 motor, excellent condition. 785-586-2313.

— C 11/10 & 11/17 —

1989 Toyota pickup, 133,000 miles, 4-speed, 2 wheel drive, topper, bed-liner, good condition. Call 785-877-3750.

— N 11/10 —

1997 F150 Ford pickup. Long Box. 77,000 miles, one owner, well maintained. Excellent shape. 719-346-8435.

— G 11/10 —

TRUCKS FOR SALE

2001 Eddie Bauer Ford Expedition, 42,000 miles, \$21,000. 785-678-2254, leave message.

— O 11/10 - 12/1 —

WANTED

Custom swathing and baling with 36 foot canvas swather and large round baler. 785-462-2288.

— C 10/20 - 11/24 —



General Farm Help Wanted

Excellent pay package with many benefits. Call 785-854-7666 (days) or 785-669-2517 (evenings and weekends) to set up an interview.

KEARNEY FOOT CLINIC, PC

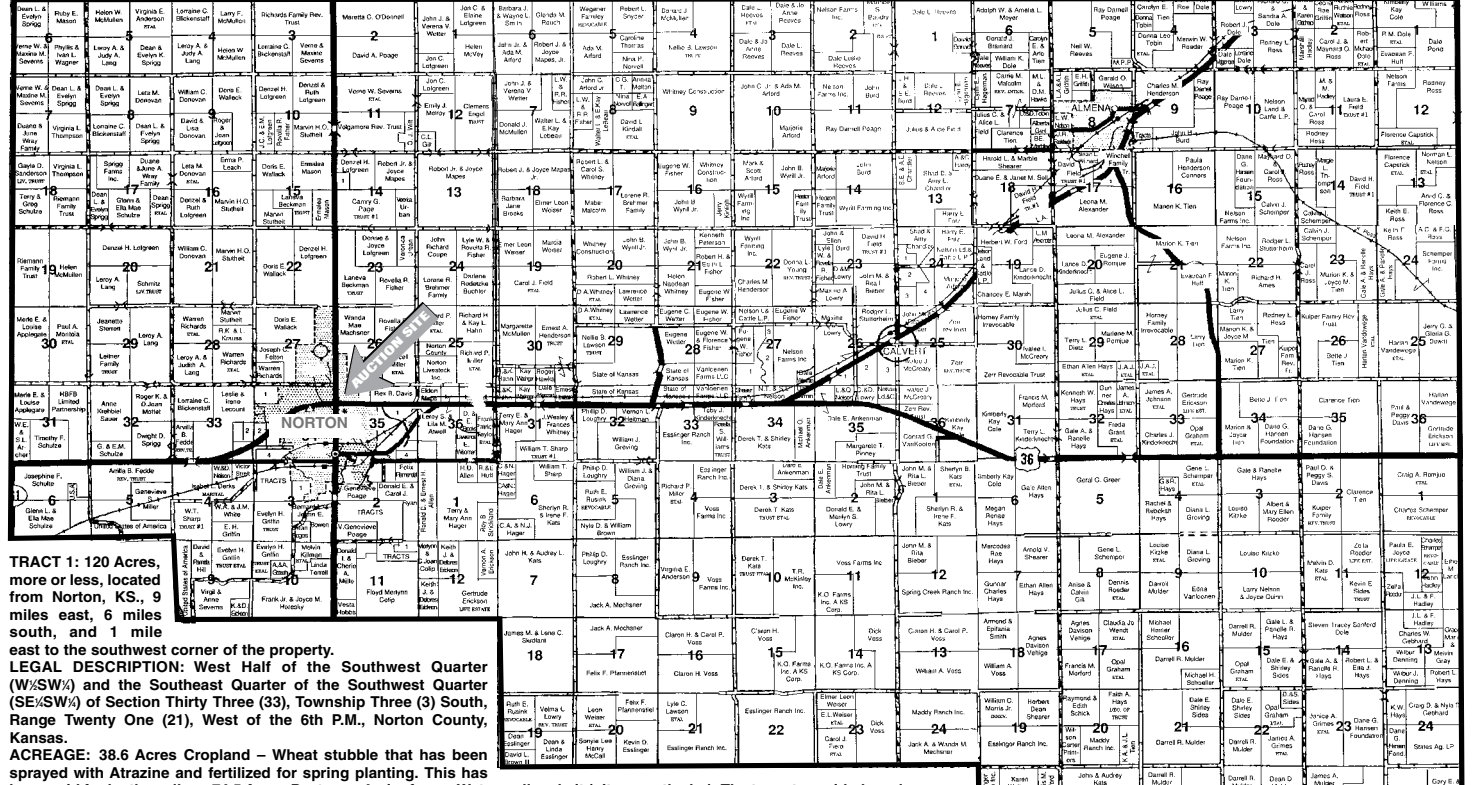
Gregory A. Burns, D.P.M. Board Certified. Diplomate, American Board of Podiatric Surgery Fellow, American College of Foot Surgeons. Call 800-448-4998.

280 ACRES - NORTON COUNTY LAND AUCTION

TUESDAY - NOVEMBER 30, 2004 - 10:00 A.M. NORTON, KANSAS

AUCTION LOCATION: 4-H Building, 126 Park St., Norton, KS.

GAROLD CARROLL ESTATE



TRACT 1: 120 Acres, more or less, located from Norton, KS., 9 miles east, 6 miles south, and 1 mile east to the southwest corner of the property. LEGAL DESCRIPTION: West Half of the Southwest Quarter (W1/2SW1/4) and the Southeast Quarter of the Southwest Quarter (SE1/4SW1/4) of Section Thirty Three (33), Township Three (3) South, Range Twenty One (21), West of the 6th P.M., Norton County, Kansas. ACREAGE: 38.6 Acres Cropland - Wheat stubble that has been sprayed with Alazine and fertilized for spring planting. This has been paid for by the seller. 74.5 Acres Pasture - 4 wire fence. Water well and pit (pit currently dry). The tenant provided a solar pump for the well. The stock tank is included in the sale. Balance: Waste, Roads and Right of Ways. FARM SERVICE AGENCY DATA: Wheat Base: 34.2 Acres - Yield: 37 bu.; Grain Sorghum Base: 0.6 Acres - Yield: 54 bu.; Soybean Base: 1.8 Acres - Yield: 14 bu. 2004 TAXES: \$268.88

TRACT 2: 160 Acres, more or less, located from Norton, KS., 9 miles east, 6 miles south, and 1/2 mile east to the southwest corner of the property. LEGAL DESCRIPTION: Southeast Quarter (SE1/4) of Section Thirty Two (32), Township Three (3) South, Range Twenty One (21), West of the 6th P.M., Norton County, Kansas. ACREAGE: 76.1 Acres Cropland - Planted to wheat. 76.5 Acres Pasture - 3 and 4 wire fence Pit and water well with submersible pump and stock tank. Balance: Farmstead with vacant house and old wood outbuildings, waste, roads and right of ways. FARM SERVICE AGENCY DATA: Wheat Base: 69.2 Acres - Yield: 37 bu.; Grain Sorghum Base: 1.3 Acres - Yield: 54 bu.; Soybean Base: 3.6 Acres - Yield: 14 bu. 2004 TAXES: \$469.24

CONDUCTED BY Jessup Realty, I.I.C. Rt. 1 Box 19 • Almena, Kansas 67622 (785) 669-2556 Monte Jessup • Broker/Auctioneer Kim Jessup • Salesperson

LOOKING FOR A CAREER—NOT JUST A JOB?

Norton Correctional Facility is looking for motivated people interested in a career as a corrections officer. There are opportunities for advancement, good pay and benefits, and retirement. For further information, please contact the Human Resource Office at NCF, Box 546, Norton, KS 67654, Telephone 785-877-3380 ext. 418. Applicants must be able to perform the essential functions of the position, pass drug screen, and complete the screening process. Applicants must be free of felony convictions or domestic violence convictions as defined by law, be 19 years of age, high school/ged, and VADL. All applicants for Corrections Officer must take and pass the Corrections Officer Test. HR will attempt to comply with any request for test time.

Make the call — make a career move — and schedule to test

United Methodist Church Norcatour, KS

Annual Pheasant Supper Saturday, November 13, 2004 5 p.m. to 7 p.m.

Adults — \$6 Children — \$3

Ages 6 to 12 — Age 5 and under free

- Turkey & Dressing, Ham Loaf — — Potatoes & Gravy — — Vegetables, Salads & Desserts —