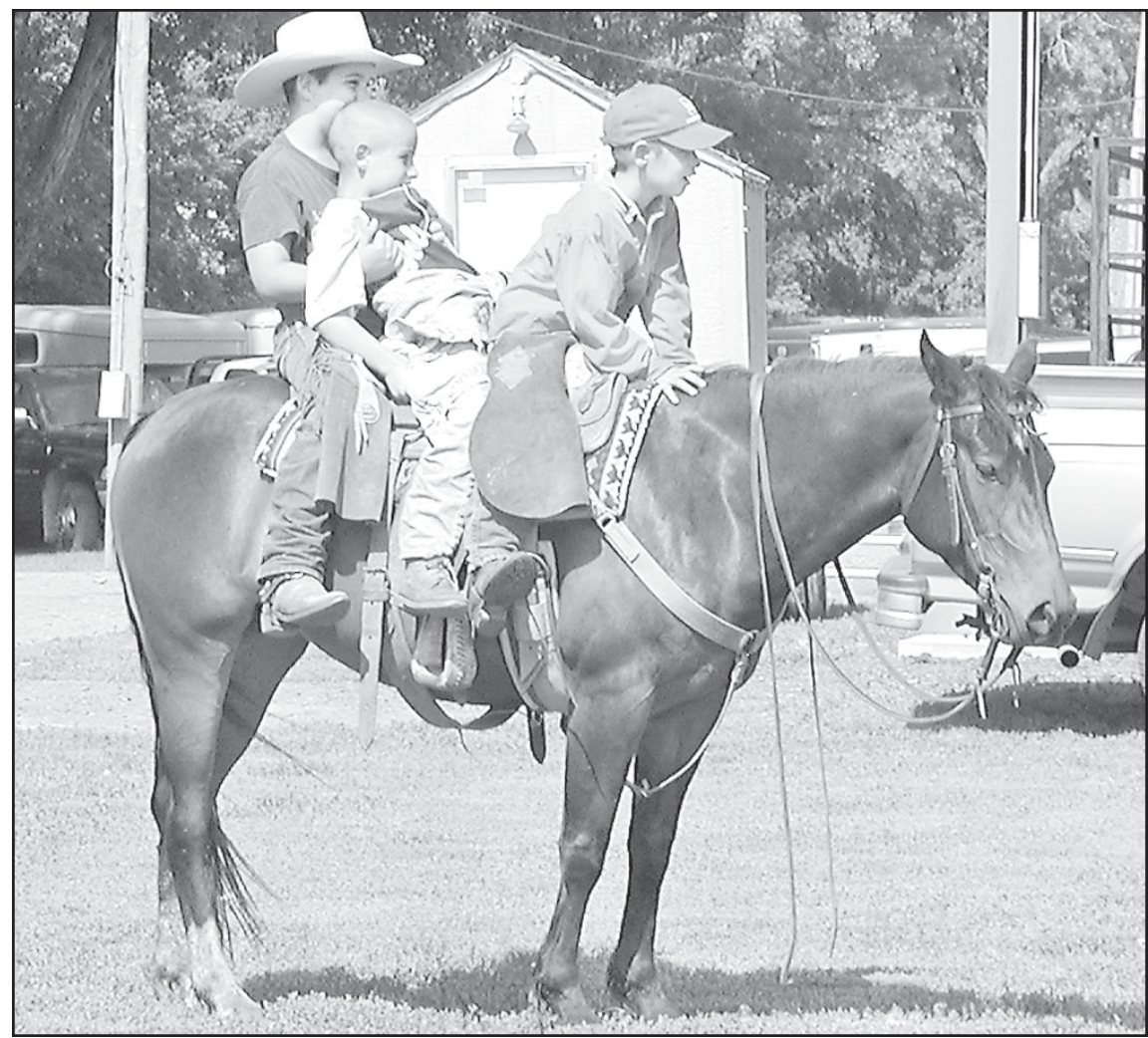




Austin Hager, son of Craig and Nancy Hager, worked to untangle a halter rope on Saturday while balancing on the wheel of a horse trailer.



Three sons of Keri and Greg Vanover (above) crowded together on Suzie Q to watch the annual 4-H horse show on Saturday. They are (from left) Lane, Dalton and Clay. Kylie Kinderknecht, (left) got an outfit adjustment from her father Lance Kinderknecht.

— Photos by Carolyn Plotts

Horses, riders show off their moves

Horse enthusiasts from as far away as Russell, Hays, Oakley, Hoxie and Nebraska, came to the Norton Equine Center Saturday for the Annual 4-H and Open Horse Show.

Kim Kasson, Almena, said the show was the first for her horse, and she was there to have a good time.

Twenty-eight riders registered for the show that featured reining,

pole bending, horsemanship and English and western riding.

A fun event for riders and spectators was the trail class.

Event organizer Samantha Fulton and volunteers created a course for horse and rider to navigate. There was a mailbox with a coupon to be retrieved, a set of cones the rider had to guide the horse through backwards, a gate to open and close, a wooden bridge

to cross and a cooler on a barrel to open for a cold drink.

Megan Douthit, St. Francis, was the judge for the event. She was assisted by ring steward Mark Weiser, Norton.

High point winners were: 7-9 year olds, Austin Hager, Norton; 10-13 year olds, Cassandra Huser, Hays; 14-18 year olds, Jessica Zillinger, Logan; and open class, Beth Zillinger, Logan.

U.S. 36 group approves billboards

By HOWARD KESSINGER
The Marysville Advocate

The U.S. Highway 36 Association board approved two billboards to draw traffic to the route, a large one to go somewhere along the highway in Kansas, and a smaller one to go along southbound I-35 near Cameron, Mo.

The action came during the association's annual meeting attended by about 35 people in St. Francis on June 10.

The larger 10-foot-by-32-foot sign will urge motorists to "Ride With the Wind" on U.S. 36, while the 12-foot-by-12-foot sign says: "U.S. 36: Travel the Kansas High Plains, Next Exit — Head West." The smaller sign will cost \$5,200 because it has an aluminum finish and auto-type paint. Rent for the Missouri property owner is a \$300-a-year lease for 10 years.

The larger, plywood sign will cost \$3,000 plus rent for space.

Colorado does not usually permit new "attraction" billboards along its roads, Leon Volk of Commercial Sign in Colby, told the board.

U.S. 36 director Penny Zeller, Seneca, has headed the sign project.

District engineers for the Kansas Department of Transportation gave highlights of construction projects along the road.

Work is to be completed by November on the first stretch of freeway along U.S. 36 west from St. Joseph.

The \$35 million concrete four-lane project runs from Elwood east 6 miles to the state line.

There are 16,400 vehicles a day crossing the Missouri River bridge, but the numbers fall off pretty fast, said Jerry Younger, district engineer in Topeka.

Near Marysville the count is

2,200, he said.

Other major work in this district, from the Marshall-Washington County line east to St. Joseph, includes a new U.S. 75 interchange near Sabetha.

Engineer Don Drickey, Salina, said major work in District 2 will include a \$4.7 million, 4-5-inch asphalt overlay to be bid in 2006 from the west city limit of Mankato west to the K-14/K-128 intersection.

A bridge or two will be replaced, and culverts will be extended. All guardrails will be replaced.

To be let about 2007 will be a \$4.8 million major modification from Mankato's east city limit east 9 miles with the same work.

A \$1.76 million project will include a 1-inch overlay from Belleville west to K-199 at Courtland.

Set for fiscal 2007 is \$370,000 for widening of the U.S. 36-K-15 intersection in Washington to facilitate semi-trailer truck turns and improve a driver's ability to see east on U.S. 36.

Completing the replacement of curb and guttering in Mankato will be a \$494,000 project to start in fiscal 2007.

Engineer Chriss McDiffett of Norton said work in Rawlins County includes a \$264,000 con-

ventional seal from Atwood west 10 miles, and a \$158,000 conventional seal from Atwood east 8 miles this summer. \$1.4 million in geometric improvement work, including new pavement, curb and gutter, will replace the road from K-25 east to Seventh Street in Atwood, with bids in January.

In Decatur County, a \$343,000 conventional seal is to be laid this year from Oberlin east 18 miles to the Decatur-Norton line.

Bids are to be let in December 2006 for \$1.1 million in geometric improvements from the U.S. 36-U.S.83 intersection in Oberlin east to Penn Avenue.

New concrete pavement and curbs and gutters will be done.

Norton County work includes a \$6 million project now underway from the west K-383 underpass six miles to West Street in Norton. Included are three new bridges, new paving and shoulders, and curb work.

To be let in September will be a \$17.5 million major modification from the Decatur-Norton County line at Norcat east 9.3 miles to K-383, with all-new pavement replacing the last stretch of the highway in Kansas which lacks modern shoulders and other safety features.

Cheyenne County historian

Tobe Zwegardt, St. Francis, spoke at the luncheon, and offered to give tours of historic sites.

Zwegardt, 89, recalled seeing horses and scrapers being used to build Highway 36 west of town.

Board members were re-elected along with president Steve Haynes, Oberlin; vice president James Erickson, Scandia; and executive vice president Cy Moyer, Phillipsburg.

The Teller Room

A Unique Restaurant at the Historic Bank of Oberlin

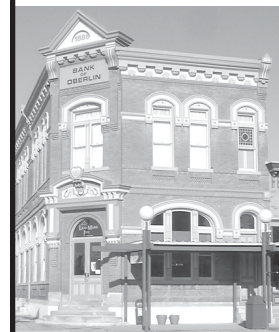
Seafood Buffet

Fri., June 24 — 6 p.m. - 8 p.m.

All American Buffet

Tues, June 28 — 6 p.m. - 8 p.m.

Lunch: Mon.-Sat. 11:30 a.m. - 1:30 p.m.
Dinner: Thurs.-Sat. 6:30-8:30 p.m.



LANDMARK INN
1-888-639-0003

www.landmarkinn.com

at the Historic Bank of Oberlin

189 S. Penn Ave., Oberlin, Kan.



Becky Smith
of Norton



Lisa Mindrup
of Lenora

Long term interest rates are still historically low
If you are buying a home or thinking of refinancing — now's the time

Becky Smith and Lisa Mindrup have a wealth of knowledge and experience in the mortgage process to make sure we choose a loan that is right for you

FIRST SECURITY BANK AND TRUST COMPANY



NORTON, KS
785-877-3313



LENORA, KS
785-567-4286

P.O. BOX 383 - NORTON, KS - 67654

MEMBER F.D.I.C.

Norton County Economic Development Director

Maintain and Improve the Quality of Life for the Citizens of Norton County

QUALIFICATIONS: Bachelor's degree from an accredited college or university with coursework in Business Administration, Public Administration, Planning or a Related Field; 3-Years of Increasingly Responsible Professional Experience in Economic Development, Grant Writing, Business or Public Sector Management, Including 1-Year Administrative Experience; Excellent Communication Skills; Outstanding Organizational Skills.

JOB SUMMARY: Responsible for planning, directing, managing and overseeing economic development activities for Norton County that will promote economic growth, including attracting quality employment opportunities, revitalizing downtown areas, and improving housing options.

SEND RESUMES TO: Economic Development Committee

c/o Norton County Clerk, P.O. Box 70, Norton, KS 67654

DEADLINE FOR RESUMES IS JUNE 30