

Petting zoo, exotic pets offer fun on Wednesday

The display of exotic pets will be held in conjunction with the 4-H and FFA petting zoo this year. Both will be from 3:30 to 4:30 p.m. on Wednesday at the Livestock Barn in Elmwood Park.

An exotic pet is one that would not be shown in another livestock, poultry or pet class at the fair.

The Norton Fair Association would welcome anyone to join the petting zoo to exhibit their exotic pet.

Dr. Steve Graf will be on hand at the display to visit with the public about the exotic animals and the petting zoo participants.

Anyone who has an "exotic pet" is encouraged to contact the Norton County Extension office at 785-877-5755 to let them know about your entries.

This has been a popular event combined with the small petting zoo, especially for the younger children.

Other featured events for Wednesday are the porkburger and watermelon feed at 5:30 p.m., Jackpot team roping at 7 p.m., and of

course the carnival from 6:30 to 11:30 p.m. and the exhibits that make up the Norton County Fair.

A full description of fair departments and schedules is available at the K-State Research and Extension Office on the ground floor of the courthouse.



Dr. Sarah Ketterl-White, D.V.M., left, judged the hand-held pets and cats at Monday evening's Pet, Cat and Dog Show held at the Andbe Home. Christopher Maddy told Dr. White how he cares for his pet Teddy-bear hamster named, "Bubba". "Bubba", close-up above, won a purple ribbon.

— Telegram photo Carolyn Plotts

Welcome to the Norton County Fair



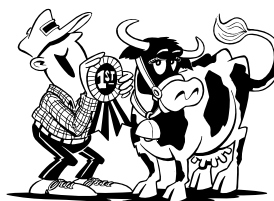
24-HOUR EMERGENCY SERVICE

- Preventative Medicine and Surgery
- Herd Health Management • Reproductive Ultrasound
- Haul-in Facility • Dentistry
- Equine Health Care and Reproductive Services
- Professional Grooming
- Comfortable Boarding Kennels

Norton Animal Health Center, Ltd.

Aaron R. White, DVM • Sarah Ketterl White, DVM

801 W. Holme — Norton, KS — 785-877-2411 — Fax: 785-874-4976



We Salute Our 4-H Clubs

ENJOY THE 2005
NORTON COUNTY FAIR

When You're Ready to Fertilize, See Us at the
Norton Fertilizer Plant, N. Hwy. 283 or at Clayton

Norton County Co-operative Assn.



Norton—(785) 877-5131; Clayton—(785) 693-4522; Reager—(785) 877-3707



1/2" 4x8 Drywall

\$ **6.59** CASH AND CARRY



Norton Homestore

111 W. Lincoln, Norton, Kansas
PHONE: (785) 877-3385



Welcome to the fair!



Norton Sheet Metal, Inc.

109 N. State
Norton, Ks 67654
785-877-3211

*This summer heat and utility bills getting you down?
Call us today to find out how we can save you money!*



www.lennoxdealer.com/nortonsheetmetal