

High winds cause damage around county

By VERONICA MONIER
Thursday and Saturday's storms brought high winds, hail and hard rain to parts of the county. The 63 mph winds that came with Thursday's storm caused plenty of damage around Norton. Assistant Police Chief Toby Kuhn said not only were numerous large tree branches broken off, one of which blocked the road running through Elmwood Park and another that blocked the intersection of Lincoln and Archer, but a utility pole near South and Case streets was blown over. There were several power outages reported in that area. The wind also blew a flatbed utility trailer from where it was parked on State Street and lodged it in the railroad tracks between State and Kansas streets, he said. Rain ranged around the half an inch mark Thursday. The Norton Area Chamber of Commerce received .6, and Pat and Paul Howell (10 miles north of town) got .55. Saturday brought 1.10 inches east of Alma, .95 on U.S. 36 near the east edge of town, .55 at KQNK Radio, .2 at the Chamber, and nothing to the Howell's. Dime-sized hail was also reported south of town on U.S. 283

Saturday night. There were no reports of structural damage in the county, said Sheriff Troy Thomson. Meteorologist Jerry Killingsworth with the Goodland National Weather Service said last Monday through Sunday the High Plains Regional Climate Center reported about 3- to 4-inches in the southwest corner of the county. The far northeast corner received 1- to 2-inches during that time, he said, while the rest of the county got 2- to 3-inches. He said the center is reporting 20- to 25- total inches of precipitation so far this year, beginning Jan. 1. Last year, he said, for the entire year, the Norton Dam reported 23.11 inches of precipitation, while the southeast part of the county received 18.51 inches and the Norcat area got 17.77 inches. "It's (the precipitation) is definitely above or the same as what it was last year," he said. "And we still have three more months to go." And more might be on the way. The weather service is predicting a 20 percent chance of isolated showers tonight and early Wednesday morning.



Sunday was Promotion Sunday at the Norton Christian Church. All the children in the Sunday School classes celebrated the event by releasing balloons before worship services. — Telegram photo by Carolyn Plotts

County to put up \$150,000 for grant

By CYNTHIA HAYNES
Norton County will apply for a grant to build a home for its emergency medical services. County commissioners decided Monday to apply for the Community Block Development Grant to build a new ambulance barn and emergency services offices and classrooms.

Randy Hrabec of Northwest Kansas Development was at the commission meeting along with Assistant Ambulance Director Ruth Schillig to discuss the proposed facility and grant request. Mrs. Schillig said the ambulance personnel were double checking surveys, they have been taking, to make sure that Norton County falls in the low to moderate income range, so the county can apply for a block grant.

At least 80 percent of the county residents had to answer the surveys and ambulance personnel have been trying to get the paperwork filled out for several months, including going door-to-door. The commissioner showed Mr. Hrabec the plans drawn up by BG Consultants, the county's engineering firm, for the new facility and discussed land acquisition and how much the county would put into matching money to obtain the grant.

The commissioners asked Mr. Hrabec if they could use the grant to purchase the land for the building. He said that it could be used but that he doesn't advise it because there are a lot more hoops that have to be gone through if the grant includes the land. However, he said, the county

Lenora fire department gets grant

Solomon Valley Rural Fire District, No. 3 in Lenora was one of nine Kansas fire departments to receive grants to improve how it operates. U.S. Senator Pat Roberts announced over \$1 million in grants were awarded to fire departments. The Lenora department received a \$19,760 grant for fire operations and safety. The money was awarded by the 2005 Assistance to

Firefighters Grant Program under the Department of Homeland Security. The program assists rural, urban and suburban fire departments throughout the country. "I am pleased to announce these funds, which are vital to improve fire fighting efforts and first responder needs in rural Kansas," Senator Roberts said. "It's imperative to support our local fire departments."

can acquire the land and use that as part of its matching money for the grant.

Commissioner Leroy Lang wanted to know if the county could still get a match on the land if it was donated.

"Yes," Mr. Hrabec replied "and that happens quite a bit."

He also said there needs to be changes in what BG has given the county, including a scope of work preliminary assessment.

"The thing about the preliminary is we want enough dollars in there so you don't have to go back and beg for more later," Mr. Hrabec said.

"A lot of engineering firms will do the preliminary for nothing in hopes of getting the final job and make money there," he said. "Not everyone will do that, however."

The biggest problem the commissioners said they wanted to solve was how much money the county would offer to put into the project.

The more the county puts to-

wards the project, up to 50 percent, the better its chances of getting a grant.

Grants are awarded on a points system, Mr. Hrabec said. If there aren't many applicants, a county with a small amount of match might be able to get a grant. However, if there are a lot of requests the counties that offer to pay more of the costs have a greater chance of success.

"I tell everyone to get the most points possible," Mr. Hrabec said. "If it doesn't get funded you can wait a year and try again next year. Your LMI (low to moderate income) surveys are good for three years."

The surveys can also be used for other projects such as bridges, rural water supplies and community buildings, he said. Cities can be split out from the county also if they want to apply for something.

At the commissioners request Mr. Hrabec checked to see what Sheridan County had offered as a match for its emergency medical

services building in Hoxie and what Smith Center had offered for the grant it received.

Sheridan County put in \$90,000 on a \$376,000 project, he reported and Smith County put up half of the \$186,000 grant it received.

Sheridan County still had to have fundraisers to finish its building, he said.

The Norton County commissioners mused that a 40 percent match on a \$470,000 grant would be \$188,000 and 25 percent would be \$118,000 to \$119,000.

"The match money doesn't have to be actually cash," Mr. Hrabec said.

"If road and bridge does a bunch of dirt work for us, we can use that for match money?" Mrs. Schillig asked.

"Yes if we can document it," Mr. Hrabec replied. "However, they won't let you run a grader out there are let you charge \$300 an hour."

"Can you go 100 and a half," Commissioner Dean Kruse asked his colleagues.

"That's what I was thinking," Mr. Lang said. "That would be over one-third plus the land,"

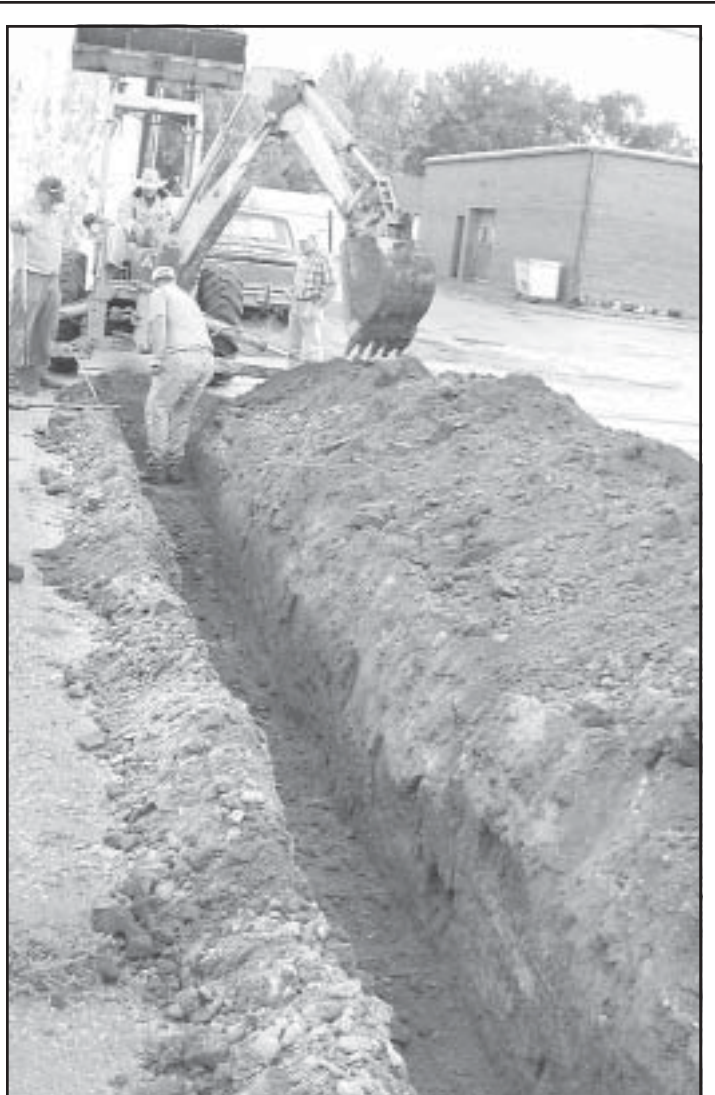
"It would be about 32 percent," Mr. Miller added.

"Plus the land, it would average up to over one-third," Mr. Kruse said.

The commissioners agreed offering \$150,000 match on the grant request and asked that a public hearing be set up for 10 a.m. Monday, Sept. 12, on the request.

The commissioners recessed to look at three parcels of land that might be suitable for the proposed facility but did not make any decisions on acquisition.

Open House
for Family & Friends of
Nancy Heaton
in honor of her
90th Birthday
Sunday, Sept. 4,
2:00 - 4:00 P.M.
Norton Senior Center • 208 West Main, Norton, KS



Late Friday afternoon, Jon Sloan of Sloan's Plumbing took his turn at digging a trench for a new sewer line for The Razor's Edge beauty salon in Norton. Also pictured is Mr. Sloan's helper Spencer Stevens (left), the back-hoe operator Dave Kindall and bystander Sid Gosselin. — Telegram photo by Carolyn Plotts

LABOR DAY SPECTACULAR

| | |
|-----------------------------------------------------------------------------------------------------------------------------------------------------------------------------------------------------------------------------------------|-------------------------------------------------------------------------------------------------------------------------------------------------------------------------------------------------------------------------------------------------------------------------------------------------------------------------------|
| <p>Nokia 6255i \$129.99</p> <ul style="list-style-type: none"> • Bluetooth® Wireless Technology • Audio and Video Streaming • Video capture and playback • Media Player / FM Radio | <p>Motorola V710 \$249.99</p> <ul style="list-style-type: none"> • 1.2 Mega Pixel Camera phone • Multimedia messaging (MMS) • Enhanced Messaging Service (EMS) • Video Capture & playback • Bluetooth® Wireless Technology • Integrated MP3 player |
|-----------------------------------------------------------------------------------------------------------------------------------------------------------------------------------------------------------------------------------------|-------------------------------------------------------------------------------------------------------------------------------------------------------------------------------------------------------------------------------------------------------------------------------------------------------------------------------|

20% Off Bluetooth Accessories

107 E. MAIN
NORTON, KS
67654

Kellie's **alltel**
wireless authorized agent

785-874-4718 — TOLL FREE 866-944-5225

Additional taxes, surcharges and fees may apply, including a 56¢ Regulatory Cost Recovery fee and a 59¢ Telecom Connectivity fee. These fees are not taxes or government-required charges. Other surcharges may include federal and state mandated Universal Service Fund fees and a 911 fee of up to \$1.94. Limited-time offer at participating locations. Requires service agreement, credit approval and approved handset. \$200 early termination fee applies. Activation fees may apply. Other restrictions apply. Terms and conditions are available at Authorized Agent locations or www.alltel.com

29TH ANNUAL
LABOR DAY CELEBRATION
Sunday, September 4
Logan Golf Course, Hwy. 9
LOGAN, KANSAS

- Radio Control Fly-In—8 a.m.-4 p.m.
- Logan Chamber of Commerce Food Booth — 8 a.m.
- Sand Volleyball Tournament—9 a.m.
- Alligator Slide — 9 a.m.-5 p.m.
- Dane G. Bales Jr. Memorial Car Show—10 a.m.-4 p.m.
- Sno-Cone Shack — 10 a.m.
- Van De Creek's State Sanctioned Kids Pedal Pull—2 p.m.

Live Entertainment
5 P.M.—Streetside • 7 P.M.—Cactus Hill
FABULOUS FIREWORKS AT DUSK

Double Elimination, Sand Volleyball Tournament
Sunday, Sept. 4 — 9 a.m., Logan Golf Course
\$30.00 Entry Fee Per Team
Winners: 50% Purse; Trophies; T-Shirts; 2nd and 3rd Place T-Shirts

MAIL ENTRY FORM AND REGISTRATION FEE BY AUGUST 31 TO:
HANSEN MUSEUM, BOX 187, LOGAN, KANSAS 67646
May Also Register Day of Event Prior to 8:30 a.m. (Must be 16 or Over to Participate)

| | |
|------------------|------------------|
| MEN | WOMEN |
| PLAYER: _____ | PLAYER: _____ |
| PLAYER: _____ | PLAYER: _____ |
| PLAYER: _____ | PLAYER: _____ |
| ALTERNATE: _____ | ALTERNATE: _____ |

Travel the country, make money as you go, and do it through your office with a view.

INEXPERIENCED DRIVERS • EXPERIENCED DRIVERS • OWNER-OPERATORS

- No experience necessary
- Company-paid CDL training for qualified candidates
- \$35,500-\$43,500 1st year (inexperienced)
- \$49,500-\$58,500/year in 4 years

APPLY ONLINE
@ schneiderjobs.com

SCHNEIDER NATIONAL
1-800-44-PRIDE • (1-800-447-7433)
Mon-Fri: 7am-9pm, Sat & Sun: 9am-6pm (Central Time)