

**FOR SALE**

**Solid oak antique ice chest**, 27 1/2" wide x 19" deep x 26" high, rare, mint, manufactured by D. Eddy & Sons, Boston, Mass., registered March 6, 1894, \$595. Antique Victorian walnut commode, 27" high x 30" wide x 15" deep, curved 12" high backboard, \$395. 785-462-3847. — C 10/19 —

**1988 Ford F-350**, crew cab, diesel, dually, A/C, cruise, PS, nice. Also bomber race car. 785-672-0721. — C 10/19 —

**Computer desks**, desk chairs, and chair mats available at Office Works & Home Furnishings, 960 S. Range Ave., Colby, 785-462-2222 or toll free 1-800-559-6757. — C 10/12 & 10/19 —

**Computers, printers**, jump drives, scanners, monitors, LCD displays, routers, camera memory readers, Ethernet cables, printer cables, computer accessories available at Office Works & Home Furnishings, 960 S. Range Ave., Colby, 785-462-2222 or toll free 1-800-559-6767. — C 10/10 & 10/19 —

**Inkjet and laser printer** supplies in stock for Hewlett Packard, Epson, Canon, Samsung, Brother, and Lexmark printers. We also stock a wide range of printer and photo papers. Office Works & Home Furnishings, 960 S. Range Ave., Colby 785-462-2222 or toll free 1-800-559-6757. — C 10/12 & 10/19 —

**Cat Food** - 20 lbs., \$5.75. Dog Food, 50 lbs., \$12.22. Everyday low price at Decatur Co-op in Oberlin. — O 9/28 - 11/30 —

**Visit Dautel's** new and used furniture store. 5 miles east of Goodland. Hours Monday - Thursday, 9 a.m. to 5 p.m. Friday 9 a.m. to

noon. Now open on Saturday from 9 a.m. to 4:30 p.m. Call (785) 899-2938. — G-tfn —

**Rubber stamps**, custom made, The Country Advocate, 1205 Main. Goodland, Kansas. (785) 899-2338. — G-tfn —

**Looking for affordable**, major medical health insurance? Call Affordable Health Insurance of Western Kansas. 1-877-587-2535. — G-tfn —

**Motorcycle leather apparel**, jackets, vests, chaps, gloves, boots, tool bags, saddlebags. Great prices! The Great Outdoors. Atwood, Kansas 785-626-9425. — O 9/21 - 11/2 —

**Queen Pillowtop Mattress**, still in original plastic, cost \$800 MUST SELL \$250 Goodland. 970-724-9630 — G 11/2 —

**Maxis E/G Semi-Auto** Black w/ Electronic Operation, 1-VL Maxis E/G Paintball marker gun - New in Box - opened to test fire only - fires perfectly, 1-JT Full Face Mask/Goggles, 1 - PMI 200 paintball hopper, 1-9oz capacity CO/2 canister \$165. Call 1-785-821-2467 — G-tfn —

**Bone Daddy BL** model by Game Face paintball marker in new condition, 1-20oz capacity co/2 cartridge by PURE ENERGY, 1- Bone Daddy BL marker gun by GAME FACE, 1 Full Face Mask w/ goggles by JT with 1500 paintballs. \$120 Call 1-785-821-2467 — G-tfn —

**PS2 Console** Sony Brand Dual Shock 2 Controller, AV & AC Cord & Instruction manual. PlayStation 2 doubles as a CD/DVD player plus 4 games: Super Trucks Racing, Corvette,

Ford Racing 2, Seek and Destroy, \$120. Call 1-785-821-2467 — G-tfn —

**1992 D250 Dodge Cummins Turbo** good condition \$4,900 785-675-3354 8 am to 5 pm. — G 10/12-10/19 —

**1999 Mercury Tracer SW** If you want a nice car call 785-462-9806 Power Windows/Locks/Steering, Tilt wheel, Cruise Control, 5 speed Transmission, AM/FM Cassette, great gas mileage. — G tfn —

**1999 Harley Davison Springer Heritage** \$16,800 - OBO, Slushy Machine complete 2 product \$400 OBO. 785-821-1509. — G 10/19 —

**Responsible party** to take on small monthly payments on high definition big screen TV 1-800-390-3970. — G 10/26 —

**Pillowtop Queen Mattress Set**. Still in original plastic. Must sell \$250. Goodland. 970-724-9630. — G 11/02 —

**1994 3-Seat Buick Century Wagon** For Sale. Body good. Probable head gasket blown. No Warranty \$425. 785-626-3888. — G 10/19 —

**For Rent or Sale:** Worried about high utilities this winter. Let us show you this spacious 3 bedroom UNDERGROUND home located on Sugar Hills Golf Course. Contact Terry Richardson at Homestead Realty 785-899-2328. — G 10/19 —

**For Sale:** Overhead Chain Hoist 2 ton, 3 phase looks and works like new. \$500 OBO 785-672-4341 — G 10/26 —

**For Sale:** 1999 Freightliner 3406E Cat 10 Speed Full

time job lease and possible financing to qualified buyer. 785-852-4299. — G 11/23 —

**RECREATIONAL EQUIPMENT**

**1983 Honda Enduro**, 600 cc, street legal, 4,300 miles, runs great, 50 plus on fuel mileage, \$2,000. Call after 6:00 p.m. 785-460-0146. — C 10/12 & 10/19 —

**CARS FOR SALE**

**Must Sell!!** 1992 Toyota Camry wagon LE, V6, 3rd seat, cd, air conditioning, power, sunroof, clean! \$2500 OBO. 308-889-3415. — G 10/19 —

**1993 Lincoln Continental**, 4 Door, Leather, Excellent Condition, Loaded, 131k miles, 785-821-3555 — G tfn —

**1997 Ford**-seven passenger van. Asking \$8,800. Almost new tires, leather interior, TV/VCR, great for traveling. A/C & Heat work great; separate stereos for front and back. Call Kim or Tim at 785-475-3510. — O 10/19 - 11/2 —

**PICKUPS FOR SALE**

**2004 Ford Expedition XLT**, 32k miles, red with gray leather, loaded, perfect condition, \$23,500. 785-460-2223 or 785-443-0814. — C 9/28 - 10/26 —

**TRUCKS FOR SALE**

**2000 Freightliner**. 470 Detroit, 13 speed, 10 new tires. Call 785-672-0721. — C 10/19 & 10/26 —

**KANSAS SURPLUS AUCTION**  
Internet bidding only  
Bids will begin to close at 10:00am Tuesday, October 25  
Seized vehicles  
Tractors  
Trucks  
Commercial equipment  
Generators  
The Purple Wave is the exclusive on-call auctioneer for the state of Kansas and is currently marketing merchandise for the Kansas Highway Patrol, Kansas Department of Revenue, Lincoln County, Crawford County, Burlingame USD 454, and others.  
Purple Wave Auction Co. too much to list here Visit our website to view listing and bid! www.purplewave.com  
701 Enoch Lane  
Manhattan, KS  
785.537.5057

**Small Business Owner, Self-Employed or Retired?**  
Affordable Health Insurance  
www.HealthInsurance2005.com  
(316) 687-3658  
AHI-4-KS 05 Underwritten by Reserve National Insurance Company

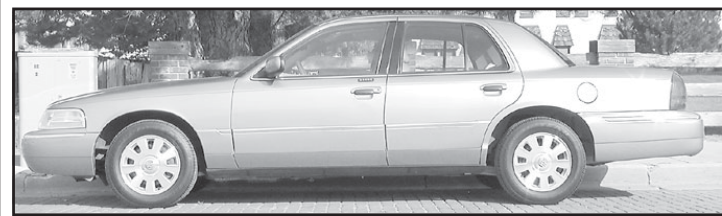
**Are your kids dying to be like you?**  
Kids with a family history of depression are far more likely to attempt suicide. In fact, suicide is the sixth leading cause of death among children between the ages of 5 and 14. That's why we offer counseling programs for all ages.  
You wouldn't ignore a broken arm. You shouldn't ignore your feelings either. Please let us help.  
HIGH PLAINS Your Community Mental Health Center.  
785.628.2871 • toll free 800.432.0333 • highplainsmentalhealth.com

**VIOXX**  
Many VIOXX® users have been at increased risk for serious cardiovascular injuries, including strokes, heart attacks, blood clots and even death. If you or a loved one took VIOXX® and had any of these problems, call us now toll free at 1-800-THE-EAGLE for a free consultation. We practice law only in Arizona, but associate with lawyers throughout the U.S.  
GOLDBERG & OSBORNE  
1-800-THE-EAGLE  
(1-800-843-3245)  
www.1800theeagle.com  
Open 7 days a week

**It's like having your own team of wellness experts.**  
If you're a State of Kansas employee, you now have the option to receive all kinds of wellness perks with Coventry Health Care of Kansas. Our online wellness center will help you get in shape, eat healthier, and improve your overall happiness. You'll also gain 24-hour access to our nurse helpline, enjoy savings on vitamins and supplements, and receive a free magazine filled with tips on keeping fit! Exercise your right to wellness. Call us at 1.800.969.3343 or visit [chckansas.com](http://chckansas.com).  
COVENTRY®  
Health Care of Kansas, Inc.  
wellness beyond benefits

**New Arrivals at Walter Motor**

2005 FORD CROWN VICTORIA — 4 door, LX model with all the comfort options, only 4,000 miles.  
2003 CADILLAC SEDAN DEVILLE — this gorgeous luxury sedan has all the extras, just 18,000 miles.  
2003 FORD TAURUS SES — 4 door with 24 valve V-6, leather, rear spoiler, full power, a real beauty, 33,000 miles.  
1998 FORD CROWN VICTORIA LX — 4 door, cloth interior, dual power seats, auto. temp., exceptionally clean, only 56,000 miles.



2005 MERCURY GRAND MARQUIS LS — 9,000 miles, all the comfort options.  
2005 MERCURY SABLE LS PREMIUM — 6,000 miles, leather, moon roof, 24 valve, V-6.  
2005 FORD FOCUS ZX5 — 5 door, only 12,000 miles, lots of extras.  
2005 FORD FOCUS ZX4 — 4 door, 15,000 miles, all the right equipment.  
2003 MERCURY SABLE — 4 door, full power, 49,000 miles, sharp!  
1999 MERCURY SABLE — 4 door, full power, very clean.  
1997 FORD ESCORT — 4 door, 81,000 miles, 4 cyl., 5 spd. overdrive.  
1993 CADILLAC SEDAN DEVILLE — Clean car.

**Coming In . . .**

2004 BUICK LE SABRE LIMITED — Loaded with extras, 9,000 miles.  
2002 CADILLAC SEVILLE — An outstanding 4 door, just 12,800 miles.  
2005 MERCURY SABLE — 4 door, full power and just 12,000 miles.

**VANS —**



2004 MERCURY MONTEREY — Premium package, leather, hideaway rear seat, heated seats, front and rear warning system, too many options to list, one in biege metallic, 5,700 miles; one in blue metallic, 8,000 miles.  
2003 FORD WINDSTAR — Exceptionally clean SE model, loaded with extras, only 20,000 miles.  
1996 FORD AEROSTAR — Good older extended van.

**SPORT UTILITIES —**



2005 FORD EXPLORER — A like new 6,000 mile XLT.



2002 JEEP LIBERTY SPORT — 4x4, 4 door, a real beauty, 34,000 miles.  
1997 FORD EXPLORER — 4 door, 4x4, clean.  
1993 FORD EXPLORER — 4 door, 4x4, great buy.

**PICKUPS —**



2004 FORD F150 — XLT, 4 door, super cab, 4x4, 5.4 V8, gorgeous, 18,000 miles.  
2003 FORD RANGER — XLT, 4 door, super cab, FX4, level II 4x4, 4.0 V6, auto., metallic blue, 18,000 miles; and we have one in red, 19,000 miles.  
2002 FORD RANGER — XLT Super cab, 2WD, V-6 auto., sharp, 34,000 miles  
1998 CHEV. S-10 — A sharp 3 door extra cab, 4 cyl., 5 speed.  
1986 DODGE RAM — Only 84,000 miles, with 4x4  
2000 CHEV. 1500 SERIES SILVERADO — 4.3 V6, auto., 2 WD, sporty pickup, short bed.

OR SELECT FROM MANY OTHER GREAT VEHICLES AT:

**Walter Motor Company**  
Two Blocks West of State Street (U.S. 283) on Washington Street  
Norton, Kansas • 785-877-3112 • 800-479-3112  
Home Phone:  
Norm Walter 785-877-3159 • Curt Walter 785-877-5679