

Take advantage of the best local guide to what's on TV next week with The Telegram's handy schedule of programming.

Page 6

Tuesday  
December 6, 2005

## Crews fix broken power poles

By KIMBERLY DAVIS

Electric crews have stayed busy since last week, fixing or replacing almost 900 power poles and restoring electricity to customers through Northwest Kansas.

Especially hard hit were rural electric co-ops that serve most farms and country homes.

Bob Helm, manager of corporate communication at Midwest Energy in Hays, said his firm counted around 390 power poles damaged in some way. There were customers without power all over the area, including rural Great Bend and Hays, he said, but most of the damage was in northwest Kansas.

Some of the poles had cross arms broken, some had burn problems, some were broken in the middle and some at ground level.

Mr. Helm said it is going to take some time to get everything fixed, but all of Midwest's customers have power again and all of the substations are back on. He said all of that was taken care of by Thursday.

## More cold weather ahead

By VERONICA MONIER

People need to remember their coats, gloves, scarves and stocking caps because its going to be a cold week.

Monday seemed like a nice day, until the wind picked up and ground snow started blowing.

One driver on U.S. 36 reported a ground blizzard between Norton and Norcatour and said visibility was pretty bad and that the road was getting slick.

Meteorologist Scott Blair, with the National Weather Service in Goodland, said the wind picked up to just under 40 mph early in the afternoon. But, he said, it dropped back down to the 10 to 15 mph range later in the evening.

With lowering temperatures, the wind chill is going to be something to look out for this week.

(Continued on Page 5)

Helm. The crew did very well to get customers' power on. When the customer is in a rural, isolated area, sometimes it takes a while longer to get the line up again and when the crew is working in those conditions, it is even tougher.

Director of Operations Earl Hansen with Prairie Land Electric in Norton said they counted at least 460 poles that have been damaged, but they expect over 500 total. A big share of the damage was in Decatur, Sheridan and Graham counties.

Sunday morning, said Mr. Hansen, the storm started in Cheyenne County and then moved to Rawlins and then to Decatur and Norton. By 3 p.m., the storm was all across the area.

The co-op brought in crews from nine cooperatives to help, he said, each sending four to six men on a crew. Mr. Hansen said Prairie Land has 26 linemen who work in this area all the time.

Power started to go out last Sunday, he said, but by Saturday, Prairie Land had the last customers, those in the Jennings area, (Continued on Page 5)

Norton, Kansas  
Home of Eleanor Jensen

### Briefly

### Church offers

### Christmas songs

CrossRoads Church, 313 W. Lincoln, Norton, invites the public to a free Christmas cantata at 3 p.m. Sunday at the church.

A few of the songs included in the performance are: "Glad Tidings", "Joy To The World", "Go Tell It On The Mountain" and "Silent Night".

For more information contact, Roy Harshbarger, 877-3690 or e-mail him at gemfriends@hotmail.com..

### Santa to visit on Thursday

If you missed Santa last week, you can catch him again from 6:30-8 p.m. Thursday night on the lawn of the Norton County courthouse in his gingerbread house.

After meeting with Santa, the whole family can jump in the sleigh and take a ride around the block.

### Junior High to give concert

The Norton Junior High School will be holding a winter band concert tonight in the junior high gym. The concert is set to begin at 7:30 p.m.

### Weather

### Forecast:

**Tonight** — Cloudy with a 40 percent chance of snow. Lows around 4 below. North winds 5 to 15 mph. Lowest wind chill readings 8 below to 24 below zero until early morning. **Wednesday** — Cloudy with chance of snow in the morning, then slight chance of snow in the afternoon. Highs around 6. North winds 5 to 15 mph. Chance of snow 40 percent. **Wednesday Night** — Decreasing clouds with occasional flurries in the evening. Lows around 5 below. Northwest winds up to 10 mph. Wind chill readings 3 below to 18 below zero. **Thursday** — Partly cloudy with highs around 17. Southwest winds 5 to 10 mph. **Thursday Night** — Increasing clouds with lows around 8. **Friday** — Partly cloudy with highs in the 30s.

### Howell report:

Friday ..... High 34, Low 21  
1/2 of an inch of snow  
Saturday ..... High 33, Low 7  
1" of snow  
Sunday ..... High 30, Low 6  
Monday ..... High 33, Low 7  
Month ago ..... High 66, Low 38  
Year ago ..... High 47, Low 29  
December precipitation ... 1 1/2" of snow  
Year-to-date precipitation ... 22.20 inches  
(Readings taken at the Paul and Pat Howell farm  
10 Miles North and 1/3 Mile East of Norton)

### Prayer

Dear God, keep reminding us that we need to willingly share with others all the gifts, talents, and possessions with which you have blessed us. Amen



### Students make beautiful music

Seth Antrim (left) and other members of the Eisenhower Elementary sixth-grade band (below) played during their concert on Thursday. Norton Junior High students (above from left) Chris Fisher, Carson McKenna and Wyatt Wentz played in the Kansas Music Educators Association honors band in Hays on Saturday.

— Telegram photos by Charlotte Stephenson



## Readers will get to vote for *Telegram, Extra's* best carriers

December is Carrier of the Year month for *The Norton Telegram* and *Norton Extra*.

There are 20 routes delivered by 12 paper carriers. We ask subscribers to vote for their carrier (see the ad in today's paper), and let us know how good a job they are doing. Deadline for voting is Tuesday, Dec. 20.

The first-place winner will receive \$30; second place, \$20; and third place, \$10.

Carriers and their routes are:

**Brett Pulec**, carrier for routes 1 and 19. He delivers the 100-200 blocks of E. Park; 300 blocks of S. Kansas, S. Wabash, E. Penn, S. Archer, and S. Norton; and the 200 block of S. State. He also delivers the 100-400 blocks of E. Warsaw; 800 block of N. Archer; 400 block of E. Wilmington; 700-800 blocks of N. Norton; 200-300 blocks of E. Wilberforce; and the 700-900 blocks of N. Wabash.

**Josiah Laughlin**, carrier for routes 2 and 20. He delivers the 500-800 blocks of N. Jones; 300-500 blocks of W. Wilberforce; and the 400 block of W. Warsaw. He also delivers the 600-700 blocks of W. Waverly and W. North; 200-300 blocks of West Ave., Ward and Sunset; 800-900 blocks of Middle; and the 800 block of Timbercreek.

**David Somers**, carrier for route 3. He delivers the 100 blocks of S. Kansas, S.

State, W. North and W. Wilton; 200 block of W. Waverly; 100-200 blocks and part of the 300 block of W. Lincoln; and the 100-500 blocks of N. First.

**Steven Somers**, carrier for route 4. He delivers the 100 blocks of W. Warsaw, W. Wilberforce, S. State, E. Washington; 200 block of W. Wilmington; 100-800 blocks of N. State; and the 600-800 blocks of N. First.

(Continued on Page 5)

# Barber joins daughter

## Norton man adds talents to beauty shop

By CAROLYN PLOTTS

A suggestion from his daughter changed the career path for Sid Gosselin, Norton's newest barber.

Last year Karen Carter, owner of The Razor's Edge Beauty and Barber, asked her father to accompany her to a hair show in Wichita and check out the barbering school there.

Mr. Gosselin said before he knew what happened he was enrolled in Old Town Barber and Beauty College. He graduated Aug. 12, trained in all the latest men's hairstyles from punk to butch; flat-tops to fades, he can cut them all.

In August, a 20-foot-by-30-foot addition was started on the south side of The Razor's Edge. The addition, built by Lee Hardy Construction, features two work stations, each complete with its own adjustable chair, wash sink, mirror and counter. Other services are a tanning bed, acrylic nail station and another bathroom.

The barber and beauty salon has a rear entrance with an asphalt parking area. Southerly windows allow sunlight into the room.

While the new addition was officially opened Oct. 1, Mr. Gosselin has been cutting hair in the salon on Saturdays since his graduation.

"I really like being a barber," he said. "Especially meeting all the different people and the varied conversations."

He said the career change seemed a natural for him.

"I cut my wife's hair and the



"Take a little off the sides, Grandpa," said Chandler Sumner, 8, to his grandfather, Sid Gosselin, Norton's newest barber.

— Telegram photo by Carolyn Plotts

kids' hair for years," he said. "I always said I should have been a barber. And, now, I am."

Carol Wyatt, former owner of the building, works at the other station in the new addition.

"He cuts my hair, and he does a good job," she said.

She sold the building where she operated Carol's Beauty Shop, to Mrs. Carter in 2003, but kept on working there.

Mr. Gosselin moved to Norton in 1974, as the Sears repairman. He worked for the company until 1980 when the store closed. Later he worked as maintenance supervisor for the schools, hospital and at Norton Manor.

He and his wife Jeanice have five children: Shawn, who works at S & R Ready Mix; Karen; Mandy, who works for Rural Telephone in Lenora; Neil, who works

for Nex-Tech at Hays; and Paul, who is a senior at Norton Community High School.

An open house is planned for the new addition from 11 a.m. to 2 p.m. Monday. There will be refreshments, drawings and sales.

Mr. Gosselin said walk-ins are the norm for a barber shop but if someone wanted an appointment, all they have to do is call him at 877-3956.

# Best carriers to get rewards

**Travis Kerns**, carrier for route 5. He delivers 100-200 blocks of E. Lincoln; 200-300 blocks of N. Kansas; 100-400 blocks of E. Waverly; 200-400 blocks of N. Norton and N. Wabash; 400 block of N. Archer; and all of East Avenue.

**Tory Rhodes**, carrier for route 6. He delivers 100-500 blocks of E. Wilton and E. Woodsfield; 400-500 blocks of E. Wilberforce; 500-600 blocks of N. Norton, N. Wabash, N. Archer and Home; and the 600-900 blocks of Sun.

**Aaron Pulec**, carrier for routes 7 and 9. He delivers the 200 blocks of W. Warsaw, W. Wilberforce, W. Woodsfield and W. North; 200-300 blocks of W. Wilton; and 300-800 blocks of N. Second. He also delivers the 300 blocks of W. Warsaw, W. Wilberforce and W. Woodsfield; and 300-800 N. Grant.

**Caryl Cullen**, carrier for route 8. She delivers the 900 blocks of Westridge, Crestview, Manor Drive, Holme and Valley Drive for route 8.

**Heaven Peters**, carrier for routes 10, 11, 12 13 and 15. She delivers the 900-1000 blocks of Regan, West Ave., Kennedy, Truman, Hartford and Churchill; 500-700 blocks of W. Crane; and the 900 blocks of W. Armory Dr. and Quail Dr. on route 10. On route 11, she delivers 1000-1100 blocks of Eisenhower; 300-400 blocks of W. Crane; 300 blocks of W. Holme and W. Armory Dr. She delivers the 300-500 blocks of N. Brown, N. Graves and W. Waverly; 300-400 blocks of N. Jones; 400-600 blocks of W. Wilton; and the 400-600 blocks

and part of the 700 block of W. Woodsfield for route 12. On route 13, she delivers the 600-800 blocks of N. Brown and Valley Vista; part of the 700 block and all of the 800 block of Woodsfield; 600 block of W. Wilberforce; 600-700 blocks of Woods Dr.; 500-600 blocks of Pool Dr. and Sunset; 400-700 blocks of West Ave.; and the 700 block of W. Wilton. She also delivers the 300 blocks of S. State and Pearl; 200-300 blocks of Taft; 500-600 blocks of Johnson Road; 400 block of South St.; 200-400 blocks of S. First, 200-500 blocks of S. Second and the Norton Manor for route 15.

**Michael Zink**, carrier for routes 14 and 17. He delivers the 100 blocks of N. Brown, S. Brown, Howard, S. Graves, Case, S. First and S. Second; 100-200 blocks of N. Graves; 100-600 blocks of W. Main; 100-800 blocks of W. Washington; and part of the 300 block and all of the 400-600 blocks of W. Lincoln. He also delivers to E. Holme; 200-300 blocks of E. Crane; 300 block of E. Armory Dr.; 1000-1100 blocks of N. Wabash; 900-1100 blocks of N. Norton; and to Echo Acres.

**Maxine Counter**, carrier for route 16. She delivers to the 100 blocks of N. Norton, N. Wabash and N. Archer; 100-200 blocks of S. Norton, S. Wabash and S. Archer; 300-800 blocks of E. Lincoln; 300-600 blocks of E. Main; 100-400 blocks of E. Washington; and to all of Indiana Ave.

**Laura Somers**, carrier for route 18. She delivers the 100-200 blocks of W. Crane; 1000-1100 blocks of N. Second; and the Andbe Home.

# It's time again to order Heartland SHARES

The deadline for ordering the December Heartland SHARE food package is noon, Thursday. To order, call the Norton Senior Center at 877-5352 or Ermalea Mason at 877-3098.

Distribution will begin at 8 a.m., Saturday, Dec. 17, at the Norton Senior Center.

The December Heartland SHARE food package contains a 6 to 6.5-pound holiday ham, potatoes, sweet potatoes, celery, carrots, egg noodles, apples, oranges, frozen strawberries, pears and a frozen 'n serve pie.

For \$22.50 plus two hours of volunteer work, you can receive all of the food or "SHARE" listed. You can order as many shares as you want.

You can also order a meat only package for \$10.50 plus one additional volunteer hour. The meat only package contains one pound of lean beef stewmeat, one pound boneless chicken breast filets, two 4-ounce boneless center cut pork chops and one pound of sweet Italian sausage.

After you purchase a regular SHARE, you may order as many December specials as you want.

There are two December specials. Special No. 1 is a premium foil-wrapped boneless turkey breast for \$15 and one additional volunteer hour. No. 2 is 2 pounds of fully cooked shrimp and four 8-ounce choice sirloin steaks for \$19 and one additional volunteer hour.



City crews were out Friday clearing the streets of piled snow from Sunday's blizzard.

— Telegram photo by Veronica Monier

# Power poles replaced

(Continued from Page 1) back on.

Mr. Hansen said they had power poles stocked up, but they had to get in five semitrailer loads of poles and supplies.

The crews were working 16 hours a day, he said, starting around 6:30 a.m.

He said farmers with big tractors helped the crews out, and so did the county highway department.

There are still quite a few lines still down to farm wells, he said, and the crews are still working 10 to 11 hours a day to get them going.

"The crews put out 150 percent," said Mr. Hansen. "and really worked at it hard for the conditions. The main thing is that we want to stress to the consumers themselves that they were really good."

He said they had a lot of calls about power outages, but the customers seemed to understand what was going on.

# Cold weather could hang around

(Continued from Page 1)

"It's definitely going to get colder," he said. "Cold to the point that there is going to be a danger of frostbite and hypothermia."

Mr. Blair said a wind chill advisory will be in effect from 11 p.m. Tuesday to 11 a.m. Wednesday.

"With a 10 mph wind and a temperature of 0, you're looking at a wind chill of negative 15 or 20 (degrees) Tuesday night," he said. "Our high on Wednesday is the coldest its been since 1927."

He said people in the area can expect highs in the mid-teens and lows around zero on Tuesday and highs around 8 degrees and a low of -3 on Wednesday, which combined with a wind of 10 to 15 mph will make a dangerous wind chill.

On Thursday, he said, highs should be in the mid- to upper-teens.

"As we get closer to the weekend, it should warm up a little bit," he said. "Look for highs around 40 (degrees) and lows in the 20s. The weekend should get us out of the single digits, but before then we're looking at some pretty chilly readings."

Mr. Blair said the area will be seeing winds in the 10 to 15 mph range. For the first three or four days of the week it shouldn't be too strong, but, again, he said, with the cold, we're looking at some dangerous wind chill.

"That's definitely our biggest concern as we head into this pe-

riod," he said.

On top of freezing cold temperatures, he said people should expect to see maybe an inch of snow Tuesday night and Wednesday morning. Across the region there should be no more than one to three inches with eastern Colorado and southwestern Kansas, south of 1-70, getting hit the hardest.

Leading Jewelry Designer in the U.S.

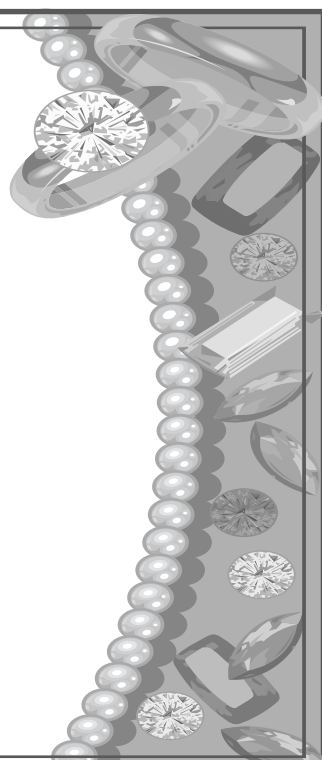
President of De' Nicole

will be in our store from

9:00 a.m. to 5:30 p.m. to present his full jewelry line to the public on **Wednesday, December 7**

*Russ' Jewelry*

101 W. Main, Norton, KS - 785-877-2634



# Doctors Clinic

711 N. Norton—Norton, Kansas  
785-877-3305



Front Row: Kay Garman, Glenda Maurer; Back Row: Ruben Silan, Jeff McKinley, Roy Hartley

**Kay Garman, ARNP/CNM**  
**Glenda M. Maurer, M.D. - Family Practice/Obstetrics**  
**Ruben D. Silan, M.D. - General Surgery/Family Practice**  
**Jeffery McKinley, D.O. - Family Practice/Obstetrics**  
**Roy W. Hartley, M.D. - Family Practice**

Medicare, Medicaid and Blue Cross/Blue Shield Participating Provider

To make an appointment please call the **Doctors Clinic at 877-3305 or 1-800-436-4101**  
OUR OFFICE HOURS ARE  
8:30 a.m. - 5 p.m. Monday through Friday  
We are also open on Saturdays 9 a.m. - 12 noon

In the case of an emergency contact the Norton County Hospital at 785-877-3351 — 102 E. Holme, Norton, Kansas

The Norton Telegram...  
News you need!