

Logan Trojan volleyball ladies own 7-10 record

The Logan Lady Trojans have a 7-10 record after playing several volleyball teams over the past couple of weeks.

Mankato Quadrangular

Logan's ladies were 1-2 in Mankato on Oct. 7. "It was a long day at Mankato for just three matches," said Coach Robin VanLaey. "I am proud of how consistent we played through the day. We never had any big wins, and consequently, were very competitive against everyone we played. We were in a position to win every game we played."

The Lady Trojans beat Stockton 25-9, 23-25, 25-23. As a team, they served 63 of 71, hit 65 of 78; set 62 of 64, and made 66.1 percent of serve receives, 3 blocks and 63 percent of their digs.

Top players were: serves — Shaley VanLoenen, 10 of 10 with 1 ace; attacks — Shelley Kemper, 29 of 34 with 11 kills; Anne Hartman, 19 of 22 with 8 kills; sets — VanLoenen, 34 of 35 with 11 assists; Anna Zillinger, 25 of 26 with 6 assists; serve receives — Kemper, 8 of 11; blocks — Kemper, 2 solos; digs — Bethany Clements, 9 of 15.

Logan lost 21-25, 20-25 to Rock Hills. As a team, they served 38 of 42, hit 48 of 52, set 41 of 46, and made 53.7 percent of serve receives, 4 blocks and 58.8 percent of their digs.

Top players were: serves — Zillinger, 8 of 8 with 1 ace; attacks — Hartman, 19 of 21 with 8 kills; Kemper, 14 of 15 with 4 kills; sets — VanLoenen, 18 of 20 with 8 assists; Zillinger, 17 of 20 with 8 assists; serve receives — Kemper, 7 of 8; and Clements, 8 of 15; blocks — Kemper, 1 solo; Savannah Sammons, 1 solo; Autumn Tien, 1 solo; digs — Hartman, 7 of 10; Clements, 8 of 17.

Logan's ladies lost 18-25, 25-23, 19-25 to Pike Valley. As a team, they served 54 of 63, hit 63 of 79, set 62 of 64, and made 63.1 percent of serve receives, 1 block, and 66.7 percent of their digs.

Top players were: serves — Zillinger, 9 of 9 with 1 ace; attacks — Kemper, 19 of 24 with 10 kills; Aspen Larson, 6 of 7 with 3 kills;

sets — Zillinger, 25 of 25 with 13 assists; VanLoenen, 34 of 35 with 11 assists; serve receives — Bethany Clements, 15 of 18; digs — Clements, 11 of 16; VanLoenen, 6 of 8.

Kensington Triangular

Logan was 2-0 in Kensington on Oct. 3. "They were two big wins for us," said Coach VanLaey. "We've been clawing our way back to '500' and these wins tied us for first in the league standings. We played more aggressive, up-tempo volleyball. We also served very aggressive, which helped put us in a situation to win the matches."

The Lady Trojans beat Kensington 25-21, 25-23. As a team, they served 41 of 49, hit 31 of 41, set 39 of 47, and made 43 percent of serve receives, 3 blocks and 9 of 12 digs.

Top players were: serves — VanLoenen, 5 of 5; Zillinger, 9 of 11 with 3 aces; Kemper, 8 of 10 with 4 aces; attacks — Kemper, 9 of 12 with 7 kills; Hartman, 11 of 16 with 6 kills; sets — Zillinger, 24 of 25 with 7 assists; VanLoenen, 12 of 16 with 5 assists; serve receives — Hartman, 6 of 9; blocks — Kemper, 1 solo and 1 assist; digs — Clements, 7 of 11.

Logan defeated Eastern Heights 25-17 and 25-21. As a team, they served 42 of 49, hit 36 of 46, set 38 of 41, and made 14 of 32 serve receives, 3 blocks and 5 of 6 digs.

Top players were: serves — VanLoenen, 8 of 8 with 1 ace; Hartman, 11 of 13 with 9 aces; attacks — Hartman, 16 of 19 with 9 kills; Kemper, 9 of 11 with 4 kills; sets — VanLoenen, 21 of 22 with 8 assists; Zillinger, 15 of 17 with 5 assists; serve receives — Kemper, 7 of 10; blocks — VanLoenen, 1 solo; Hartman, 2 assists.

Logan Triangular

The Lady Trojans were 2-0 in a triangular they hosted in Logan on Sept. 26.

"I couldn't be more proud of our team," said Coach VanLaey. "We have been seeing great improvement the past couple of weeks, but have not been able to 'get the wins'. Our girls played very well,

but most of all, they never gave up. At one point in the second game against Western Plains, we were behind 13-22 and came back to win 25-23. We were forced into a new offensive set against W.P. and switched defense against Palco. This is not normal protocol for us, so it basically raised the level of difficulty. I am very proud of our team and hope we continue to grow. Our junior varsity also played very well and won two

matches against Palco." Logan beat Western Plains 15-25, 25-23, 25-20. As a team, they served 58 of 64, hit 46 of 64, set 63 of 73, and made 43 percent of serve receives, 5 blocks and 18 of 23 digs.

Top players were: serves — Hartman, 11 of 11 with 1 ace; Leandra Sparks, 13 of 13 with 3 aces; attacks — Kemper, 13 of 17 with 6 kills; sets — Zillinger, 48 of 51 with 11 assists; serve receives

— Hartman, 5 of 8; blocks — Tien, 2 solos; digs — Larson, 2 of 2 with 2 kills. Logan's ladies conquered Palco 25-21, 25-14. As a team, they served 45 of 48, hit 34 of 44, set 43 of 45, and made 53.1 percent of serve receives, 4 blocks, and 4 of 5 digs.

Top players were: serves — Sparks, 13 of 13 with 2 aces; Hartman, 8 of 8 with 4 aces; and Zillinger, 11 of 11 with 3 aces; at-

tacks — Kemper, 12 of 15 with 8 kills; sets — VanLoenen, 28 of 30 with 8 assists; Zillinger, 13 of 13 with 3 assists; serve receives — Hartman, 8 of 10; blocks — Kemper, 3 solos; Sammons, 1 solo.



ADM-Northern Sun

6425 Road 14 ~ Goodland, KS 67735
(785) 899-3700

PRODUCTION OPERATORS

ADM-Northern Sun is currently taking applications for full-time production shift operators for our sunflower processing plant with benefits. Part time without benefits is also available. Monday through Friday and occasional weekend hours as needed. Part-time employment could lead to full time productions shift operators.

- ◆ Medical/Prescription/Dental Insurance
- ◆ Life Insurance
- ◆ Disability Insurance
- ◆ Flexible Spending Accounts
- ◆ Credit Union
- ◆ 401K
- ◆ Annual salary for permanent full time \$24,000 - \$28,000, rotating shift differential included.
- ◆ Part-time \$9.50 per hour
- ◆ Overtime available based on job requirements
- ◆ Wellness Program
- ◆ Advancement Opportunities
- ◆ Pre-employment drug testing
- ◆ Drug free workplace
- ◆ Work-Life Program
- ◆ Paid Vacation
- ◆ On the job training will be given

We are looking for motivated, responsible people with a willingness to learn and the desire to advance within our company. Applicants must be dependable and a team player. Applicants must have a valid photo ID an original Social Security Card or original birth certificate. Women and minorities are encouraged to apply. Application packets are available to be picked up at ADM-Northern Sun between the hours of 7 a.m. and 4 p.m. Monday through Friday. We are located 5 miles West of Goodland on Hwy 24, turn north at Caruso. ADM is an equal opportunity employer.

LODGE NOTICES

American Legion
Harmonson Redd
Post No. 63
Second and Fourth Monday
Joe Ballinger, Commander

Eagles Lodge
FOE 3288
Second and Fourth
Wednesday, 8 p.m.
Dennis Gilhausen, President
Bill Nelson, Secretary

Sons of the
American Legion
Fourth Monday
7:30 p.m.
James Railsback, Commander
Alan Hale, Adjutant

Veterans of
Foreign Wars
Reg. 7:00 p.m.
First Mon. of each month
Gary Bruinekool, Commander
Joe Ballinger, Quartermaster

I.O.O.F.
No. 157
108 South Kansas, Norton
Thursday-7:30 p.m.
Fun Night—Last Thursday
of each month
Scott Collins, Noble Grand
Bill Cochran, Secretary

Liza Deines ~ Antique, Collectible & Household Auction

Special Consignment by Bobby Annon ~ Antique Wood Working Tools & Others

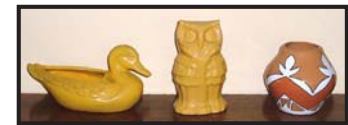
Saturday • October 21, 2006 • 10:00 A.M.

4-H Building • Park Street • Norton, Kansas

APPLIANCES:
Kenmore Washer GE Dryer
Kenmore Microwave Quasar TV
Sharp Vacuum Sweeper

FURNITURE
(Most Is Antique)
Round Oak Table with Queen Anne Style Legs, 3 Leaves
4 Slat-back Chairs with Original Leather Seats under the Fabric Covers
Two 1920's Style Oak Bookcases
Walnut Executive Desk (Large)
Mission Oak Book Stand
Two Drawer Upright TV Cabinet
Square Side Table with Heavy Inset Marble Top (has a detachable magazine rack & hidden interior cavity)
Curved Back Oak Chair 3 Book Cases
Office Desk Rocker Recliner
Child's China Cabinet Bustle Chair

POTTERY ITEMS:
Coors Logo Juice Glasses
Hall Morning Glory Tea Pot
A few pieces of Frankoma Dryden Vases



ANTIQUE & COLLECTIBLE DISHES:

Large Amount of Westmoreland Milk Glass Items in the Quilt & Paneled Grape Pattern
Small Amount of Fenton Milk Glass Items
Small Collection of Antique Milk Glass Powder Boxes
Rare Antique Milk Glass Picture Frame with Stand
Vitrook Floral Band Creamer & Sugar Set
Depression Glass Items:
Yellow Florentine #2 Footed Cone Water Pitcher
Amber Madrid Gravy Boat with Attached Platter (very rare)
Flat Salt & Pepper Shakers (Original Lids)
Oval Vegetable Dish 11" Low Console Bowl
Low Candlesticks Small Oval Platter
Amber Parrot or Sylvan
8 Footed Cone Sherbets
Ice Bucket Green Mixing Bowl
Forrest Green Bowl Tulip Cookie Jar
Few Pieces Blue Bubble Jewel Tea Item
Shirley Temple Pitcher Pig Cookie Jar
Collection of Pattern Glass Stemmed Cordial Glasses
Patterns: Broken Zig Zag, Palmette, King's Crown, Diamond Band Spoons, Creamers & Sugars
Patterns: Prayer Rug, Arches, Forget-me-nots
Early American Pattern Glass
Bethlehem Star (Large Amount) Water Jug, Decanter/carafe, Compotes, Vinegar Cruet, Butter Dish, Tumblers, Berry Bowl & Sauce Dishes, Sugar Bowl & Glass Spoon
Swirl Mini Mugs Swirl Pitcher
Swirl Honey Jar with Notched Lid (rare)
Lancaster Glassware in Pale Yellow
Handled Sandwich Tray, Rose Bowls, Serving Tray with scalloped Edge, 24 Tea Tumblers
Colony Crystal Dinnerware by Fostoria.
10" Dinner Plates, Salad Plates, Footed Sherbets, Cone Parfait Glasses, Footed Wine Glasses, Creamer, Sugar Bowl
Waterford Crystal Items
Tall Whiskey Decanters
Set for 6 of Opaque White Oatmeal Dishes
Footed Beer Glasses with Logos
8 World Fair Commemorative Glasses in Brass Rack
Fry Opal Round Casseroles
White Hen On Nest
French Ivory Dresser Vanity Set
Set of Wheat Dishes



COLLECTIBLE:

Church Bench
3 Antique Fire Extinguishers Cream Can
Rock Post Metal Dead End Sign
Ammo Boxes Mexican Wood Horse
Wood Boxes Morton & Bremner Scale



HOUSEHOLD ACCESSORIES:
Paper Weights Tapes Glass Glasses
Rabbit, Elephant, Snail, Cats, Owl, Dolphin What
Knots Many Vases
Bells Glove & Hamkie Box
Metal Horse Book Ends Brass Assortment Pieces
Antique Tins Folding Chairs Records



GAMES:

Box Games Early American Chess Set
Antique Rocking Horse

CAMERAS, BANKS & MICROSCOPE:

1921 Kodak with fold out
Brownie Box from 1930's Original Suede Box Bag
Polaroid Land Brownie Starflash from 1950's
Anso for Slides or Prints 1960's
Waco Microscope Conoco Motor Oil Bank
Mercury Siltroscope with Slides

PAPER GOODS & PICTURES:

Antique Sailboat Calendar Prints (17) some in Frames
Children's Books
NCHS Year Books Antique Price Guide Books
Book About Dresden, Kansas
Antique Advertising Fans
Presidents Of US Metal Coins in Frame
Coin Holders & Books Hard Back Books
Paper Back Books Comic Books
Assorted Pictures in Frames
Painting by Sigma Larenn
1899 History of Kansas Book

CROCKS:

2 Gal Western Brown Red Wing Jar
#4 Crock Large Bread Bowl
Zion Lutheran Church Trego Center, Ks Crock
Pittsury #8 Item

KITCHEN ITEMS:

Cast Iron Dulco Oven Silverware
Nice Selection Pots & Pans Cherry Pitter
Fire King Pieces Cosco Step Stool
Meat Grinder Marble Rolling Pin
Blue Jars

COINS, MARBLES & JEWELRY:

1904 Silver Dollars (2) Two Half Dollars
Four Quarters Four Dimes
6 Bags of Marbles Nice Amount of Jewelry

MUSIC ITEMS:

Hero Harmonica Conn Clarinet
Conn Trumpet

SPORT ITEMS:

Daisy BB Gun (Marlin 95) Fishing Poles
Pocket Knives 7 X 50 Binoculars in Case
Horse Shoes Antique Padlocks
Fishing Pole Holder Box Snow Sled

LINENS:

Vintage Hats Fancy Work
Blankets Sheets
Pillowcases

CLOCKS & RADIOS:

Coin Clock Flec Numismatit Clock
Large Wall Clock GE Cathedral Radio

SHOP AND YARD EQUIPMENT:

Delta 15" Scroll Saw Skill Plane
Propane Torch Stanley Plane
22" High Wheel Lawn General Mower
Other Tools R 1/0 BI Weed Eater
SPEE-D-KUT Model B2 Table Saw 1/2 HP
Saw Blades Miter Box Saw
Black/Decker 7 1/2 Power Band Saw Hoe
6 Ft. Werner Step Ladder Step Ladder (Like New)
Saw Horse Tile Spades
Pitch Forks Potato Fork
2 Bolt Cabinets
3.75 HP 22" Cut Quality Lawn Mower
Garden Sprayers Scribe
Bird Bath Bird Feeders
Craftsman Cabinet Scrap Lumber
Lg. Supply of Misc. Lengths of Lumber



ANTIQUE WOODWORKING TOOLS

CONSIGNED BY BOBBY ANNON

#2 Stanley Plane, Rosewood Handles, 7", Smooth Blade (Very Rare)
#2 Stanley Plane, Rosewood Handles, 7", Corrugated Blade (Very Rare)
#3 Stanley Plane, Rosewood Handles, 8", Smooth Blade
#3 Stanley Plane, Rosewood Handles, 8", Corrugated Blade
#4 Bailey/Stanley Plane, 9", Smooth Blade
#4 Bailey/Stanley Plane, 9", Corrugated Blade
#8 Bailey/Stanley Jointer Plane, 24", Smooth Blade
#8 Bailey/Stanley Jointer Plane, 24", Corrugated Blade
#7 Bailey/Stanley Jointer Plane, 22", Smooth Blade
#7 Bailey/Stanley Jointer Plane, 22", Corrugated Blade
#6 Bailey/Stanley Fore Plane, 18", Smooth Blade
#6 Bailey/Stanley Fore Plane, 18", Corrugated Blade
#5 Bailey/Stanley Jack Plane, 14", Smooth Blade
#5 Bailey/Stanley Jack Plane, 14", Corrugated Blade
#5 1/2 Bailey/Stanley Smooth Plane, 11 1/2", Smooth Blade
#4 1/2 Bailey/Stanley Smooth Plane, 10", Corrugated Blade
#45 Stanley Combination Plane, 11 1/2", & Set of Cutters in Carrying Case
#48 Stanley Tongue & Groove Plane 10 1/2" Swinging Fence
#50 Stanley Light Combination Plane 9 1/2" Type 2
#41 Miller's Adjustable Plow Plane By Stanley 9 1/2" Type 2
#26 Bailey/Stanley Jack Plane Wood Bottom 15"
#21 Stanley Smooth Plane Wood Bottom 7"
#78 Stanley Duplex Plane 8 1/2"
#102 Stanley Box Plane 5 1/2" Smooth
#103 Box Plane 5 1/2" Smooth
#101 Alum Plan 5 1/2"



Auctioneer Notes:

Liza Deines enjoyed the art of collecting antiques and selling them. It was difficult for her to turn loose of them once she purchased them but she did enjoy providing fine antiques for others. She is residing in another city and offers these antiques as well as items from her home at this auction. You will be pleasantly surprised at the quality and uniqueness of the articles in this sale. Liza and her late husband Leroy have been long time residents of Norton. Do plan to attend and purchase the vintage as well as useful items in this sale.



ANTIQUE WOODWORKING TOOLS

#193 Stanley Fibre Board Cutter 12 1/2", Attachment but No Blade
#80 Stanley Spoke Shaver
#51 Stanley Spoke Shaver Adjustable Blade
#60 Double Cutter Spoke Shaver
(2) Wood Handle Spoke Shavers
(3) Assorted Spoke Shavers
#82 Stanley Cabinet Scraper (Pat. 1,917,779) 14 1/2"
#14 Stanley Tri Square 7 1/2"
#10 Stanley Inlaid Tri Square 8"
No# Stanley 6" Adjustable Tri Square
No# Stanley 8" Rosewood Handle Tri Square
No# Stanley 6" Rosewood Handle Tri Square
(2) Stanley Bevel Square
(2) Stanley Bevel Square Rosewood Handle
#91 Stanley Marking Gauge Farrell Cutter
(3) Draw Marking Gauge Threader
Disston & Morss Brass Hardware Wood Level
Stanley Level & Plumb Cast Iron 24" Dbl. Bubble
E.S. & Company Extending Brass Lined
Measuring Rule (3 Foot)
Snider Mortise Gauge Rosewood & Brass
CS Cadury & Co Leather Cutter Rosewood & Brass Handles
Auger Bits Size 18 to Size 3 in Wood Box
(Assorted Brands)
AMCO Crank Pin Returning Tool in Box
ZIM Manufacturing All Steel Reciprocating & Progressive Valve Grinder
Chipaway Draw Knife 9" Wood Handling
N.B. Jennings Draw Knife 8" Folding Wood Handle
No Mark Draw Knife 8" Adjustable Wood Handle
InShaves Draw Knife



Auctioneer's Note:

Bobby has been an avid antique tool collector. He thinks it is time to sell part of his collection. Bobby has identified the tools from Stanley Antique and Collectible Tool Book by John Walter. They are very clean and unusual. These tools will sell right at 11:00 a.m. This is your opportunity to not only purchase antique tools but also admire this rare and historic collection.

Lunch Stand Available

Visit our web site @ www.krvn.com
select Auctions, and choose 10/21

* Sales Tax will be Collected & Not Responsible for Accidents or Items after Sold * Terms: Cash Day of Sale on Personal Property * All Announcements Day of Sale Take Precedence Over Printed Material *

SportsLine: (785) 877-3361

NORTON LIVESTOCK, INC.

785-877-5161 NORTON, KANSAS

Sale results from Oct. 12 — 1470 Cattle Sold

STEERS:

30 blk steers, Norton	684	114.00
61 mix steers, Norton	774	112.25
56 red and blk steers, Quinter	773	110.75
75 mix steers, Norton	772	110.00
66 x bred steers, Norton	845	106.25
62 mix steers, Norton	1023	98.00

HEIFERS:

40 blk heifers, Hanston	695	106.00
55 blk heifers, Norton	744	106.00
124 blk heifers, Hanston	707	105.00
71 x bred heifers, Norton	756	103.00
62 mix heifers, Norton	796	102.00
65 mix heifers, Norton	795	102.00
65 mix heifers, Norton	813	101.00

OCTOBER 26 — SPECIAL CALF SALE ALONG WITH REGULAR SALE
NOVEMBER 2 — SELLING BRED COWS, BRED HEIFERS - COW CALF PAIRS ALONG WITH REGULAR SALE
NOVEMBER 21 — SELLING BRED COWS - BRED HEIFERS AND COW/CALF PAIR SALE

REGULAR CATTLE SALES EVERY THURSDAY
Clarence Tien--785-973-2231, Cellular--785-567-8113
Bob Jessup--785-543-6121, Monte Jessup--785-669-2556
Jan Tien--785-973-2744

Looking for a Career with unlimited opportunities?

- Salaries start at \$9.00 and up
- Shift Differentials
- Paid Training
- Medical/Dental coverage within 2 weeks of employment
- Unlimited Advancement opportunities.

Alorica

5970 Sykes Blvd.
Manhattan, KS
785-564-4400
Option 5

Duane R. McEwen

Auctioneer - Salesperson
East Hwy 36 - 601 East Holme
Norton, KS 67654
Phone 785-877-3032

McEwen Auction