

# THE NORTON TELEGRAM



WEBSITE: [nwkansas.com](http://nwkansas.com)

12 PAGES

## Friday,

## October 3, 2008

Norton, Kansas  
Home of Alesha Vahling

### Briefly

#### Telegram Poll

McCain - 82

Obama - 66

Ron Paul - 3

Gov. Palin - 1

Bob Barr - 2

Total: 154

To take part, call 877-3361  
or 877-6908 (daytime). You  
can also send an e-mail to:  
[tom.d@nwkansas.com](mailto:tom.d@nwkansas.com).

### Musical treat awaits residents

By TOM DREILING  
[tom.d@nwkansas.com](mailto:tom.d@nwkansas.com)

A real treat is in store for the community on Sunday at 3 p.m., thanks to the Norton County Arts Council.

They will feature Stanton Nelson, a widely acclaimed local aspiring musician in his final recital before he embarks on his college studies.

The recital, which will feature piano selections from his own compositions, will take place in the East Campus Auditorium.

Additionally, guest dueling fiddler Maria Gamallo and guest pianist Breanna Ellison, will also perform.

Admission is \$5 for adults, \$3 for reciprocity, \$2 for junior and senior high and \$1 for 12 and under.

The Norton County Arts Council has a promising schedule for the new season and The Telegram will keep its readers posted, and also urges these same people to consider membership in the organization.

The Norton County Arts Council has a reputation for presenting some of the finest entertainment in the northwest Kansas area.

Easy directions to  
Norton - page 4

### Weather

**Tonight** — Partly cloudy with a low around 51. **Saturday** — Partly sunny with a high near 80. Breezy with a southeast wind 10 to 15 mph increasing to between 20 and 25 mph. **Saturday Night** — A 20 percent chance of showers and thunderstorms.

**Sunday** — A 40 percent chance of showers and thunderstorms. Mostly cloudy with a high near 76. **Sunday Night** — Showers and thunderstorms likely. Chance of precipitation is 60%.

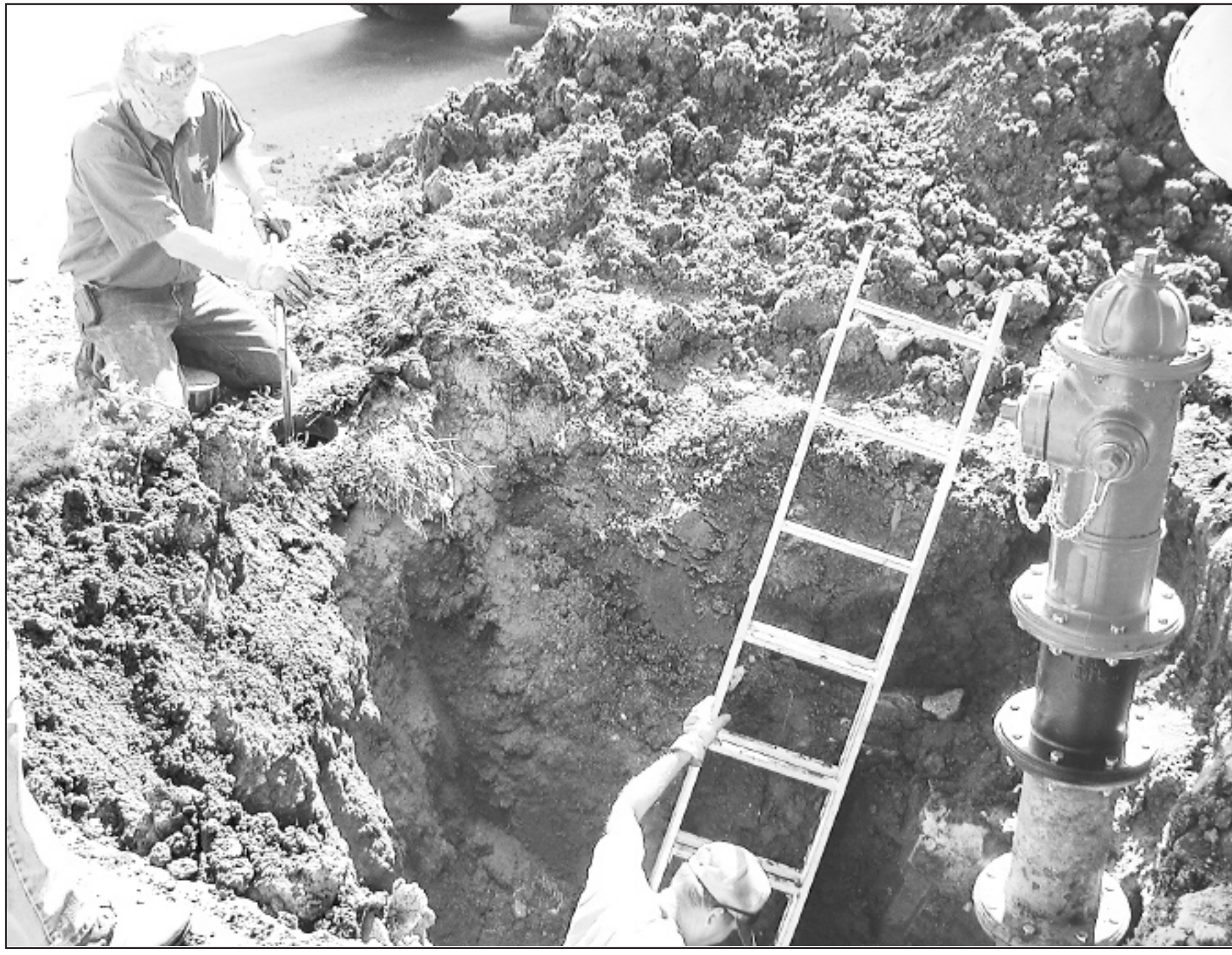
### Kingham report:

Sept. 30..... Low 42, High 77  
Oct. 1 ..... Low 44, High 74  
Oct. 2 ..... Low 40, High 77  
(Readings taken at the Kingham farm  
9 miles northwest of Norton)

### Prayer

O God, help us to realize that we need forgiveness as much as we need to forgive. In Jesus' name. Amen

### Problem below



Norton city employees Dan Bainter, left, and Richard McKenna worked of U.S. 36 and U.S. 283 Thursday afternoon in Norton.

— Telegram photo by Brandy Leroux

# Important election dates near

By TOM DREILING  
[tom.d@nwkansas.com](mailto:tom.d@nwkansas.com)

November 4 is election day, the day this country will pick a new president who will be sworn in on Jan. 20, 2009. Sen. Barack Obama and Sen. John McCain are the candidates of the two major political parties; Sen. McCain is a Republican and Sen. Obama a Democrat.

But you don't have to wait until Nov. 4 to cast your ballot. A check with the office of Robert D. Wyatt, Norton County Clerk, revealed that Advanced Balloting will begin on Oct. 15, allowing registered voters to obtain a ballot to mark at the courthouse or take with them to study, mark and then return to the office. Further instructions and details will be provided by office personnel when voters secure an Advanced Ballot.

The clerk's office also said that the last day for people to register to vote is Oct. 20. This is for new voters, those who might have had a status change, have recently moved from one location to another, etc.

If you are not sure about your registration, please check with the office at 877-5710, or pay them a visit.

Indications are this election has the potential to set a record for turnout nationally. That potential also exists locally, especially with the hyped campaign for the presidency.

As of Sept. 30, there were 2,302 registered Republicans in the county, 619 Democrats and 769 Unaffiliated. Additionally, there was one Reform Party registration and two Libertarians.

The total: 3,693. In the state of Kansas, one of the major races involves Republican incumbent U.S. Senator Pat Roberts and Democratic challenger Jim Slattery, a former Kansas Congressman. Sen. Roberts claims Dodge City as his home and Mr. Slattery lists Topeka as his.

Polling gives Sen. Roberts a big lead, although Mr. Slattery has gained a little ground in recent weeks. Democratic Party loyalists know it's an uphill fight

as is usually the case when an incumbent is involved. But using an old phrase, one eastern Kansas Democratic Party leader was quoted as saying, "It's never over 'til it's over." If television commercials were the deciding point, Sen. Roberts should win hands down.

First District (R) Congressman Jerry Moran, Hays, is seemingly on his way to another lopsided victory. He is being contested by Democrat James Bordonaro, Emporia. Polls at the outset had Rep. Moran way out front and that is how the race continues with about a month and a day remaining before the election.

In the 120th District for State Representative, incumbent John M. Faber (R), Brewster, is being challenged by Democrat Robert G. Strevey, Norcatour. Both are household names as Mr. Strevey has challenged Rep. Faber before. There isn't any polling that could give a hint as to this race's outcome, but with the Republican majority registration in the 120th, Mr. Faber would seemingly hold an edge.

- Uncontested races locally include:
- State Sen. Ralph Ostmeier, (R) Grinnell, 40th District, Incumbent
  - William B. Elliott, (R) Hill City, District Judge 17th District, Incumbent
  - County Commissioner 2nd District, Carolyn Applegate, (R) Norton
  - County Commissioner 3rd District, John Miller, (R) Norton, Incumbent
  - County Clerk, Robert D. Wyatt, (R) Norton, Incumbent
  - County Treasurer, Cynthia Joan Linner, (R) Norton, Incumbent
  - Register of Deeds, Wanda M. Vincent, (R) Norton, Incumbent
  - County Attorney, R. Douglas Sebelius, (R) Norton
  - Sheriff Troy M. Thomson, (R) Norton, Incumbent

The polls will be open from 7 a.m. to 7 p.m.

The two most important dates right now are:

- 1) Advanced Ballots, Oct. 15.
- 2) Registration deadline, Oct. 20.

### Election preparation involved

By BRANDY LEROUX  
[bleroux@nwkansas.com](mailto:bleroux@nwkansas.com)

Voting is easy. You drive to your polling station and cast your vote. You'll probably see people you know and chat for a few minutes. You then go about your day. It may be difficult to schedule a time that day to get to your polling station, or maybe there'll be a line at the booths, but that's nothing compared to what takes place in the two months leading up to any election day, the next being Nov. 4.

Patti Long has been working in the Norton County Clerk's office since 1976, and has been the Deputy County Clerk since 1986. Betty Pfannenstiel has been the clerk to the Norton County Clerk since 1995.

If anyone knows the ins and outs of getting ready for an election, it's these two women.

When she first started, Ms. Long typed up party affiliation lists and voter registration lists on a typewriter and the votes were hand-counted by poll workers.

The county clerk called in the results to

the Kansas Secretary of State. After the Florida counts, re-counts and re-re-counts during the presidential elections of 2000, voting machines were incorporated into the voting process.

The Kansas Secretary of State required all counties to adopt the federal regulation, Help America Vote Act, which included using electronic voting machines. In 2005, Robert Wyatt, Norton County Clerk, Ms. Long, and Mrs. Pfannenstiel went to Hays for a week-long training session, before they even had the machines. This year is the first presidential election in Norton County with the voting machines.

"I've been doing this for a long time, and I've seen a lot of changes in the voting process," said Ms. Long.

With the new electronic voting machines come new issues to deal with. Every spring, someone from the clerk's office goes to an update meeting.

Preparations for an election begin two months before the election is held. First, (Continued on Page 5)

### Hope there's more!



Almost 50 people attended the annual Lyle Community Building Fund Benefit and Potluck Supper held Saturday, Sept 27. Brady Sumner, 8, son of Todd and Deanna Sumner, Lyle, sampled his way through the dessert table. Entertainment included bluegrass music, a clarinet solo, Sweet Adelines Harmony singers, readings and clog dancers.

— Photo courtesy of Carolyn Plotts