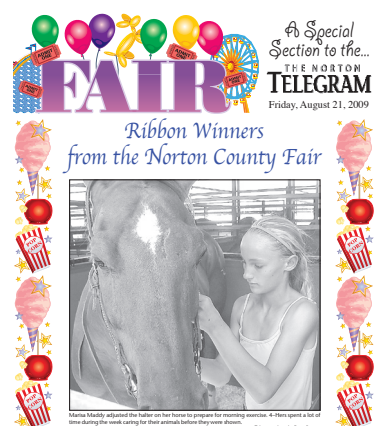


# Norton County Fair horse show results



Ribbon Winners from the Norton County Fair

**ID HALTER-AGED MARES**  
Cedar Ridge: Micah Kasson, Red; Caden Kinderknecht, Red; Carson Montgomery, Red; Makayla Smith, Second Blue; Kylie Kinderknecht, Blue  
Busy Beavers: Kailey Gill, Blue; Jesse Ambrosier, Blue  
Prairie Dog: Kegan Vanover, First Blue; Lane Vanover, Red  
FFA: Kayla Scheetz, Blue

**2B YEARLING GELDING**  
Prairie Dog, Kegan Vanover, Blue

**7 SENIOR FITTING AND SHOWING**  
Busy Beavers: Kyra Fulton, First Purple/Grand  
Prairie Dog, Kegan Vanover, 1st Blue/Reserve; Caleb Vanover, Red  
FFA: Kayla Scheetz, Red

**2D HALTER-AGED GELDING**  
Cedar Ridge: Makayla Smith, Blue; Kortney Cunningham, Red; Eli Lowry, Red  
Busy Beavers: Ryan Johnson, Red; Jace Ruder, Blue; Kolton Harting, Blue; Bailey Ambrosier, Blue; Johnnye Ruder, 1st Blue; Dylan Goss, Red; Adrienne Hager, Blue; Kyra Fulton, First Purple

**9 JR. FITTING AND SHOWING**  
Cedar Ridge: Micah Kasson, Red; Caden Kinderknecht, Red; Kylie Kinderknecht, Red

Busy Beavers: Ryan Johnson, Second Blue/Reserve; Kailey Gill, Blue

**8 INT. FITTING AND SHOWING**  
Cedar Ridge: Carson Montgomery, Red; Makayla Smith, Second Blue, Reserve Champion; Kortney Cunningham, White  
Prairie Dog: Lane Vanover, Red; Clay Vanover, Red; Dalton Vanover, Red  
Busy Beavers: Bailey Ambrosier, Blue; Kolton Harting, Red; Johnnye Ruder, First Blue, Grand Champion; Adrienne Hager, Blue  
Busy Jayhawkers: Marissa Maddy, Red

**BAREBACK**  
Cedar Ridge: Makayla Smith, Red; Kortney Cunningham, Red; Kylie Kinderknecht, White; Caden Kinderknecht, Red; Micah Kasson, Red  
Busy Beavers: Austin Hager, Red; Bailey Ambrosier, Red; Kolton Harting, Red; Johnnye Ruder, First Blue; Adrienne Hager, Red; Dylan Goss, Red; Jace Ruder, First Blue, Grand Champion;

Jesse Ambrosier, Red; Dylan Goss, Red; Jesse Ambrosier, Red; Jace Ruder, Red  
Prairie Dog: Kegan Vanover, Blue; Lane Vanover, Red; Clay Vanover, Blue; Dalton Vanover, White  
Busy Jayhawkers: Marisa Maddy, Red  
FFA: Kayla Scheetz, First Blue

**ENGLISH**  
Busy Beavers: Kyra Fulton, Blue; Johnnye Ruder, Red  
FFA: Kayla Scheetz, Red

**HUNT SEAT EQUITATION**  
Busy Beavers: Johnnye Ruder, Red  
FFA: Kayla Scheetz, Red

**WESTERN HORSEMANSHIP**  
Cedar Ridge: Carson Montgomery, First Blue; Makayla Smith, Red; Kortney Cunningham, Red; Kylie Kinderknecht, Red; Micah Kasson, Red; Caden Kinderknecht, Red; Eli Lowry, White

**WESTERN PLEASURE**  
Cedar Ridge: Carson Montgomery, Red; Makayla Smith, Red; Kortney Cunningham, Red; Kylie Kinderknecht, Blue; Eli Lowry, White; Micah Kasson, Red; Caden Kinderknecht, Red  
Busy Beavers: Kyra Fulton, First Purple; Austin Hager, Red; Bailey Ambrosier, Red; Kolton Harting, Red; Johnnye Ruder, Red; Adrienne Hager, Red; Kailey Gill, White; Dylan Goss, Red; Jesse Ambrosier, Red; Jace Ruder, First Blue  
Prairie Dog: Kegan Vanover, Red; Lane Vanover, White; Clay Vanover, White; Dalton Vanover, Red; Caleb Vanover, Blue  
Busy Jayhawkers: Marisa Maddy, Red  
FFA: Kayla Scheetz, Blue; Emily Juenemann, Red

**REINING**  
Cedar Ridge: Carson Montgomery, Red; Makayla Smith, Red; Eli Lowry, White; Caden Kinderknecht, Red; Micah Kasson, Blue  
Busy Beavers: Kyra Fulton, Blue; Austin Hager, Red; Bailey Ambrosier, Blue; Kolton Harting, Red; Johnnye Ruder, Red; Adrienne Hager, Red; Kailey Gill, Red; Dylan Goss, Red; Jesse Ambrosier, White; Jace Ruder, Blue  
Prairie Dog: Kegan Vanover, Red; Caleb Vanover, Red; Lane Vanover, White; Clay Vanover, Red; Dalton Vanover, Red  
Busy Jayhawkers: Marisa Maddy, White

**POLE BENDING**  
Cedar Ridge: Carson Montgomery, White, 57.68; Makayla Smith, Blue, 32.58; Kylie Kinderknecht, Red; Kortney Cunningham, White; Caden Kinderknecht, Red  
Busy Beavers; Kyra Fulton, First Blue; Bailey Ambrosier, Red; Kolton Harting, Red; Johnnye Ruder, First Blue; Adrienne Hager, Red; Jace Ruder, White  
Prairie Dog: Caleb Vanover, White; Kegan Vanover, Blue; Lane Vanover, White; Clay Vanover, White  
Busy Jayhawkers: Marisa Maddy, Red  
FFA: Kayla Scheetz, Blue

**BARRELS:**  
Cedar Ridge: Carson Montgomery, Red, 37.68; Makayla Smith, Red, 25.05; Kortney Cunningham, Red, 38.39; Kylie Kinderknecht, Red, 35.09; Eli Lowry, Red, 38.19; Micah Kasson, First Blue, 37.78; Caden Kinderknecht, First Purple, 34.81  
Busy Beavers: Austin Hager, Red, 36.06; Bailey Ambrosier, Green, nt; Kolton Harting, First Blue, 32.13; Johnnye Ruder, Green, nt; Adrienne Hager, Blue, 33.29; Kailey Gill, Green, nt; Jesse Ambrosier, Green, nt; Jace Ruder, Red, 41.40; Dylan Goss, Red, 55.06.  
Prairie Dog: Kegan Vanover, Second Purple, 27.66; Caleb Vanover, Red, 40.87; Lane Vanover, Second Purple, 29.85; Clay Vanover, Red, 35.80; Dalton Vanover, First Purple, 28.27  
Busy Jayhawkers: Marisa Maddy, Green, nt  
FFA: Kayla Scheetz, First Purple, 26.88; Emily Juenemann, Blue, 29.87; Kortney Cunningham, Red, 29.57; Kylie Kinderknecht, Blue, 22.70; Eli Lowry, Blue, 23.59; Micah Kasson, Blue, 30.79; Caden Kinderknecht, First Purple, 26.54  
Busy Beavers: Austin Hager, Red, 28.36; Bailey Ambrosier, First Purple, 19.99; Kolton Harting, Blue, 23.59; Johnnye Ruder, Red, 26.65; Adrienne Hager, Red, 27.32; Kailey Gill, Red, 56.23; Jesse Ambrosier, Purple, 27.89; Jace Ruder, First Blue, 29.59; Dylan Goss, Red, 44.10; Ryan Johnson, Green, nt  
Prairie Dog: Kegan Vanover, First Blue, 21.05; Caleb Vanover, Red, 30.28; Lane Vanover, Blue, 23.42; Clay Vanover, Red, 25.46; Dalton Vanover, First Blue, 21.69  
Busy Jayhawkers: Marisa Maddy, Blue, 24.18  
FFA: Kayla Scheetz, First Purple, 19.84; Emily Juenemann, Blue, 21.53

**BREAKAWAY ROPING**  
Cedar Ridge: Makayla Smith, Green, nt; Eli Lowry, Green, nt; Caden Kinderknecht, Green, nt  
Busy Beavers: Kolton Harting, First Purple, 5.50; Austin Hager, Second Purple, 8.96; Adrienne Hager, First Blue, 13.81  
Prairie Dog: Kegan Vanover, First Purple, 16.40; Caleb Vanover, Red, 35.23; Lane Vanover, Green, nt; Clay Vanover, Green, nt; Dalton Vanover, Green, nt

## Food auction, sale financial success

The 2009 4-H Food Auction and Sale was held on July 21 at the 4-H Building. The Food Auction has become a tradition at the Norton County Fair.

Funds that are raised during this event are then used for many related events and activities that involve the 4-H Council programs.

Again, this year some 4-H members who do not sell an animal are given the opportunity to sell an item and keep the proceeds themselves. There were 21 4-H'ers that took part in this sale.

The total amount paid by the buyers for these 4-H products was \$1,725.00.

The 2009 4-H Food Auction and Sale was conducted by Don

McMullen and Duane McEwen. Support for the 4-H program was shown when the auction was over and the bids for 55 items totaled \$3,680. The net for the 4-H Council was \$1,955. Last year there were 51 items that totaled \$3,815.00.

The 4-H Council would like to recognize those individuals and business who contributed at the 4-H Food Auction. Those contributors are: Bill Goscha, Beverly Kinder, Norton Animal Health Center, Daffer Construction, Engel's Sales, Farm Bureau, First Security Bank, First State Bank, KQNK Radio, Kansas Land Tire, Lofgreen Enterprises, McEwen Auction, McMullen Real Estate, McMullen/Wyatt

Auction, Moffet Drug Store, Russ' Jewelry, State Farm Insurance, Town and Country Kitchen, United Northwest Federal Credit Union, Zwickle Accounting, Lenora Rainbow Collation, Almena Ag, Carter Trucking, Decatur Co-op Association, NC+ Seeds, Jerry's Body Shop, Hays Farms, Jamboree Foods, Deanna Braun Ins, Norton National Guard Armory, Sebelius and Griffiths Law, Bailey Electric, Bailey Heating, Cooling and Plumbing and D and

M Service. All the Contributors make it possible for the 4-H'ers to participate and learn more about Home Economics related events and other activities through the resource materials, events and programs made available with these funds. The committee for the Auction and Sale of the 4-H food products was: Trish, Jade and David Cressler, Lois and Megan Wentz and Elaine and Bryce Lofgreen.

## COME JOIN OUR TEAM!

The Northwest Kansas Educational Service Center is looking for qualified professionals to join our staff for the 2009-2010 school year. We have the following opportunities available.

- Para-Educators all levels (Head Start, Migrant Education, Special Education.
  - Early Head Start Home Visitor (Colby)
  - Head Start Program (Liaison Staff Position)
  - PTA's & COTA's
- To receive an application, contact Rose Langley, 785-672-3125 extension 200. Applications will be accepted until the position is filled.  
\*NKESC is an Equal Opportunity Employer\*

## BIG IRON

**Free Information**  
How to buy - How to sell Equipment  
on [www.BigIron.com](http://www.BigIron.com)  
**Thursday, August 20, 2009**  
Attend at 3:00 pm or 7:00 pm  
Mittens Travel Plaza  
E Hwy 40 just off 1-70 Oakley, KS  
Reminder:  
Farm Machinery Retirement Auction Clem Delzeit, Owner  
Friday, August 21 10:00 AM in Oakley, KS

**STOCK AUCTION COMPANY**  
Quality Equipment Auctioneers

**1-800-WE SELL 8**    [www.stockra.com](http://www.stockra.com)

## Check today's Post Fair section for more results of the county fair

## FARM MACHINERY & EQUIPMENT AUCTION

THUR, SEPT. 10, 2009 @ 10:30 AM, CDT

SELLERS: RW FARMS, ET AL.

AUCTION LOCATION: From I-70 exit 135 at Ogallah, KS go 1 mile North to hwy 40, then East to the Christian Church vacant lot in Ogallah - **SIGNS WILL BE POSTED!**

**TRACTORS & LOADER:**  
•'05 McCormick XTX 200 w/7' L175 bucket & grapple, MFWD, 200 HP, 24 spd PS w/fore/aft shuttle, 1,000 PTO, 3 pt, QT, 3 remotes, 2,247 hrs, complete warranty coverage thru 2010•'93 Agco Allis 6680, MFWD, 80HP, 4x3XMSN w/fore/aft shuttle, foot throttle, 540/1,000 PTO, front & back 3 pts, 2,765 hrs•'89 Case IH 4494, crab steer 4x4, 504 eng, 200HP, 4x3XMSN, Big 1,000 PTO, 3 pt, 4 remotes, 3,272 hrs •JD 4850, 15 spd PS, Big 1,000 PTO, 3pt, QT, 3 remotes, 9,470 hrs w/ JD dozer•JD 4850, 15 spd PS, 1,000 PTO, 3 pt, QT, 3 remotes, 4,104 hrs•IHC 1486, 4x3XMSN wTA, 540/1,000 PTO, 3 pt, 3 remotes, 6,046 hrs•'52 Massey Harris 44, 540 PTO, 3 pt, 1 remote•JD 46W loader

**TRUCKS:**•'69 Ford 9000 semi, 855 Cummins, 13 spd, TS•'86 Ford F250 spray truck, 4x4, 400 gal tank, Raven spray controller, 50' boom •'84 Chevy C25 Custom Deluxe, flatbed w/underbed tool boxes, 350 eng •'83 Chevy C35 dually, 454, 4spd, stowable 5<sup>th</sup> wheel ball

**TRAILER:**  
•Trailmobile 42' flatbed hay trl

**PANELS:** 60) 6-bar 20' panels - bundles of 10 w/connectors & clips

**HAY EQUIPMENT:**•'97 Hesston 8500 swather, 152HP, Cummins 5.9L, 15' header •JD 1525 14' swather, pull type w/JD 300A twin knife header•'76 NH 276 baler, twine tie, w/8 bale Farmhand loader attachment & accumulator •Vermeer 605-Super J round baler w/equalsfill auto tie

**FARM MACHINERY, SHOP EQUIPMENT & MISC:**•IHC 490 30' tandem disc •IH 1580 manure spreader •Kent 27' series IV cultivator •IHC 800 Planter, 8x30 •JD 7100 planter, 6x30 •2) JD LZ hoe drills, 10x10•JD 24' LZ 8x12 hoe drills w/ Hartman hitch•FK 5x5 blade plow •Hutchmaster 12.5' plow/disc •Kory 270 bu Gravity box •MM 5x16 semi mounted plow •IHC 16' one-way •2) Dempster dry fertilizer spreaders •JD 7' back blade•Otter 12' angle blade•Hutchinson 10'x71' & Mayrath 8'x50' augers•5) 100 gal chemical shuttle totes some w/transfer pumps•500 gal propane tank on trl **AND MORE ITEMS TOO NUMEROUS TO LIST!**

Call for brochure or visit [www.farmandranchrealty.com](http://www.farmandranchrealty.com)

## FARM & RANCH REALTY, INC.

NEAL MANN, Agent (785-635-2102)  
1420 W. 4<sup>TH</sup>. - COLBY, KS 67701  
**1-800-247-7863**  
DONALD L. HAZLETT, BROKER/AUCTIONEER

"When you list with Farm & Ranch, It's as good as SOLD!"

## Outreach Classes in Norton

# ENROLLMENT

## MONDAY, AUGUST 24 — 6:30-8:00 P.M.

Enrollment will be held in the Norton Junior High School Cafeteria  
Call Education Coordinator: Angela Melvin, 785-877-3518 (Home)

Classes not listed may be offered if sufficient interest exists

NO.	COURSE	CR.	INSTRUCTOR	PLACE	START	END	START TIME	END TIME
AL101	Basic Nutrition (\$15 ITV Fee)	3	M. Kane	N. Hospital ITV	8/19	12/16	7:00p	10:00p
AL104	Nurse Aide	5	L. Killman	Andbe	TBA	TBA	TBA	TBA
AL110	Medication Aide	4	L. Killman	Andbe	TBA	TBA	TBA	TBA
AR103	Drawing I	3	V. Robison	NCHS	9/02		6 p.m.	9 p.m.
AR104	Watercolor Painting	3	V. Robison	NCHS	9/02		6 p.m.	9 p.m.
BI276	Anatomy and Physiology I	5	L. Killman	Hospital	TBA	TBA	TBA	TBA
BI276L	A & PI Lab	0	L. Killman	Hospital	TBA	TBA	TBA	TBA
HI177	American History 1865 to present	3	G. Seamon	NJHS	9/2		6 p.m.	9 p.m.
PI 276	Introduction to Ethics (ITV Fee \$15)	3	M. McVay	N. Hospital ITV	8/25	12/16	6 p.m.Tue	9 p.m.
PS176	General Psychology	3	B. Seamon	NJHS	9/1		6 p.m.	9 p.m.
PS276	Developmental Psychology	3	B. Seamon	NJHS	9/1		6 p.m.	9 p.m.
SO176	Intro to Sociology	3	T. Jones	NJHS	9/8		6 p.m.	9 p.m.

\*Mandatory placement is required. Contact local outreach coordinator for information

10 8-21-09 Sports.indd 1

8/21/09 8:20:56 AM