

★ For classified rates and information, call 785-877-3361 ★

CARD OF THANKS

THANK YOU for your hugs, visits, phone calls, cards, flowers and food during the loss of our husband, father, grandfather and great-grandfather Elwood Bailey. It has been such a comfort to us. - Norine Bailey, Debbie and Dave Graham and family, Charles Bailey and family

-2/21-

I WOULD LIKE to thank everyone who helped me celebrate my 85th birthday and for all of the cards. Special thanks to Marvin and Millie Matchett for hosting it for me. - Bill Matchett

-2/17-

NOTICE

BORDERLINE GUN CLUB is sponsoring a gun show Saturday, February 18, 8 a.m.-6 p.m. and Sunday, February 19, 9 a.m.-4 p.m. at the Phillips County Fair Building off of Highway 183. Any questions contact Larry Randall, 785-543-5641.

-2/17-

BRULE, NEBRASKA Gun Show, February 25 and 26. Saturday from 9 a.m. to 5 p.m. and Sunday from 9 a.m. to 4 p.m. Located at Brule Activity Center. (308) 287-2528.

-2/24-

CARPET CLEANING SPECIAL - 3 Rooms Only - \$149.95! Dry-Foam Safe and Green Seal approved. Servicing NWKS mileage free since 1987! A+ Cleaners (785) 538-2526 or (785) 443-5400, Johnene Cheney.

-3/30-

GARAGE SALE

GARAGE SALE - Norton Community Center, Saturday, February 18, 9:00 a.m.-4:00 p.m.

-2/17-

INDOOR GARAGE SALE - Saturday, February 18 and Sunday, February 19, 9 a.m. to 4 p.m., 710 N. First, Norton, KS. Furniture, Household, Kitchen and Miscellaneous.

-2/17-

SEPTIC TANKS

SEPTIC TANKS PUMPED and systems installed. Call Logan Septic and Water. 785-543-7772

-tf-

TREE SERVICE

ABEL TREE SERVICE - Fully insured, free estimates, stump grinder, bucket truck. 785-871-7275. Firewood for sale.

-tfm-

COUNSELING

CENTER CREEK COUNSELING - Chastity Harman-In-

REAL ESTATE/DUANE MCEWEN



Listing Agent Duane McEwen

Experienced in all types of Real Estate Private or Auction - Customer Friendly, Flexible Hours, Active in Community, Internet Advertising Home Sweet Home is Sweeter When You Own It Call Duane, 1-785-877-3032, Norton, or Broker, Gary Richards, Oberlin, KS For all your real estate needs, call anytime - Come see us today!

gram - Mental health and counseling services provided in Franklin and Alma, NE. Evening appointments available. Approved for Kansas Medicaid and Medicare in addition to other insurances. For an appointment call (308) 470-1338.

-tfm-

HELP WANTED

NORTHERN VALLEY is looking for a paraprofessional in the high school. We are an EOE. Interested applicants should contact the district office at 1-785-669-2445. This position will be open until filled.

-2/20-

HOMESTEAD Nutrition Project is accepting applications for a fill-in cook at the Norton Sr. Center Meal Site. Potential for additional fill-in hours as manager also available at the facility. As needed M-F, no weekends, no major holidays. For more info please call 1-800-432-7422. EOE

-2/20-

NELSON FARMS, INC., Long Island, KS is looking for a Farm Foreman. The right candidate will be a team player with pivot and flood irrigation experience and mechanical skills. A CDL or the ability to get one is desired. Contact Clarke at 785-854-8503.

-2/21-

NINEMIRE FENCE has two immediate openings for full time help. Some travel required, excellent per diem. Insurance after 90 days. Contact, John Ninemire at 785-567-8092 or Jason Lang at 785-216-1096.

-2/21-

KAUFMAN TRAILERS is currently accepting applications for welders. Come be a part of a growing company with average pay between \$35,000 and \$50,000 a year, day shift working hours, and an employee bonus program. If you have prior welding experience and a good work ethic, we would be interested in talking to you. Stop by our office located at 1025 9th St., Beaver City, NE, or call Steve Forbes at 308-995-1002. EOE

-2/24-

AG VALLEY CO-OP in Norton, KS is accepting applications for 2 CUSTOM APPLI-

CATORS and 1 CDL CLASS A DRIVER in the Fertilizer Department at our Norton Location. These are full-time positions. Ag Valley offers competitive wages as well as one of the best benefit packages in the area. Please apply Online @ www.agvalleycareers.com or contact Leonard Long at 785-877-5900.

-2/27-

PHILLIPS COUNTY RETIREMENT CENTER has openings for LPN's or RN's. Offering part-time or full-time employment, good wage and benefit package including paid single health and dental plan. Please call (785) 543-2131 for more information or stop by 1300 State Street to pick up an application.

-3/2-

PSI TRANSPORT is always looking for good company livestock and grain haulers as well as shop mechanics. Competitive pay, life/health/dental benefits and bonus program available. EOE. (785) 675-3477.

-tfm-

MIDWEST FEED DRIVERS - Must have Class A CDL, 2 years OTR experience. We offer competitive wage plus insurance. Call Gene or Chris at 888-796-9246.

-tfm-

WANTED - Your business online at www.NWKansasOnline.com

-tfm-

DISC ROLLING

DISC ROLLING - Rolling on the farm. Call Ron Lewis, Eustis, NE. 308-486-3501.

-tf-

APARTMENT FOR RENT

BIEBER COTTAGES in Norton. Independent apartment for seniors, 2 bedrooms, 1 bath, handicap accessible, all appliances furnished. Garage, emergency response system, water and gas paid. Pet friendly. Contact Nancy McGinnis, Andbe Home 785-877-2601.

-tfm-

HOUSE FOR SALE

GREAT PROPERTY FOR SALE - Beautiful House, 5 bedrooms, 2 baths, machine shed, horse corral, grain bins, on 15 acres of great pasture. Price Reduced \$198K. 50% owner's finance. View details at: http://kansascountryhome4sale.com/ or call 1-800-440-0467 or 800-293-7490.

-tfm-

REAL ESTATE agencies online at www.NWKansasOnline.com

-tfm-

REAL ESTATE

CONTACT OWNER / BROKER Larry Riggs at Kansasland Realtors for Listings and Sales - private treaty or auction. 785-543-4440 or 785-874-4776.

-tfm-

ALFALFA WANTED

ALFALFA WANTED - Round or square bales. John Woods. Phone 620-804-2040.

-4/12-

WANTED TO BUY

WANT TO BUY pasture land in Norton, Graham, Phillips or Decatur Counties. Call Lee Hardy, 785-871-0832.

-3/30-

PASTURE WANTED

PASTURE for 25 to 150 cow/calf pairs for 2012 and beyond. Lee Hardy, Edmond, KS. 785-871-0832.

-tfm-

LIVESTOCK

LODGE NOTICE

LODGE NOTICES

American Legion Harmonson Redd Post No. 63
Second and Fourth Monday 7:30 p.m.
Darren McMullen, Commander
Curt Archibald, Adjutant

Eagles Lodge FOE 3288
Second and Fourth Wednesday, 7:30 p.m.
Larry Hawks, President
Secretary, Ron Miller

Veterans of Foreign Wars
Reg. 7:00 p.m.
First Mon. of each Month
Curt Archibald, Commander
Joe Ballinger, Quartermaster

The American Legion Riders Post 63
Meet at 5:00 p.m. at the American Legion Building on the Second Sunday of Every Month
website: www.alr63.org

DURHAM BULLS genetic calving ease, muscle powerhouses, BO's Shorthorn's. Oberlin, KS. 785-475-3649.

-2/14-

AG BUSINESSES ONLINE at www.NWKansasOnline.com

-tf-

AUCTION SERVICE

Sudoku Solution #2446-M

8	1	7	3	9	2	5	6	4
3	9	2	4	5	6	8	1	7
4	6	5	1	8	7	2	9	3
2	3	9	6	7	4	1	5	8
1	5	4	8	3	9	7	2	6
6	7	8	5	2	1	4	3	9
7	2	3	9	1	8	6	4	5
9	8	6	2	4	5	3	7	1
5	4	1	7	6	3	9	8	2

© 2009 Hometown Content

Pin Cushion

M	E	W	L	S		C	B	S		B	R	A	V	O
A	T	A	L	E		H	A	I		R	E	M	A	N
S	T	R	A	W		I	N	S		A	N	I	S	E
		A	T	M	A	C	C	E	S	S	C	O	D	E
				A	G	O				Y	A	K		
D	W	I		E	R	O	S		S	I	G	N	A	L
E	R	N	O		E	C	H	O		S	L	I	M	E
W	I	N	F	O	R	H	U	L	K	H	O	G	A	N
A	T	I	M	E		S	T	I	R		P	E	N	T
R	E	S	E	N	T		E	N	O	S		L	A	O
				O	A	K				N	Y	E		
		B	O	W	L	E	R	S	T	A	R	G	E	T
M	I	N	E	O		E	L	I		U	R	B	A	N
S	T	I	N	G		B	A	N		P	E	R	L	E
G	E	T	T	Y		S	T	Y		S	T	O	L	E

2/5/2012

NORTON LIVESTOCK, INC.
785-877-5161
NORTON, KANSAS
REGULAR CATTLE SALES EVERY THURSDAY
Sale Results for February 16 1985 Cattle Sold

STEERS:
12 blk bulls, Arapahoe488 . . .195.00
45 blk steers, Norton.630 . . .173.00
12 blk steers, Prairie View637 . . .170.50
25 blk steers, Norton.705 . . .162.00
38 blk and red steers, Long Island.793 . . .152.75
65 blk steers, Prairie View807 . . .150.10
49 blk steers, Wilsonville839 . . .149.85
47 Char x steers, Prairie View862 . . .148.35
59 mix steers, Morland895 . . .143.75

HEIFERS:
28 blk heifers, Norton612 . . .155.00
29 blk heifers, Norton657 . . .153.00
159 blk heifers, Hanston666 . . .149.00
68 blk heifers, Hanston700 . . .147.00
44 mix heifers, Long Island759 . . .146.25
59 mix heifers, Morland820 . . .143.75
37 blk heifers, Wilsonville794 . . .141.50
41 mix heifers, Stockton.785 . . .140.75
60 mix heifers, Norton800 . . .140.10

Clarence Tien-785-973-2231, Cellular-785-567-8113;
Monte Jessup-785-669-2556; Jan Tien-785-973-2744

GLAD REAL ESTATE AUCTIONS

Land Auction
Friday March 16, 2012 @ 10 A.M. CT
Auction Location: St. Mary's Hall, Herndon, KS
Sellers: Kelly Kimbel & Lexie Mumm
Selling: 812 (+/-) acres, bottomland, grassland & CRP

Tract 1: NW1/4 of NW1/4 of 18-2-31, Rawlins County, 29.5a 1st bottomland.

Tract 2: S1/2 of NW1/4 and S1/2 of 18-2-31 and N1/2, Less SW1/4 of NW1/4 of 19-2-31, Rawlins County, 46.6a CRP, 586a grassland.

Tract 3: SE1/4 of NW1/4 of 13-2-32, Rawlins County, 28.9a and 1st and 2nd bottomland, 7.51a pond and timber.

Tract 4: NE1/4 of NW1/4 and N1/2 of NE1/4 of 13-2-32, Rawlins County, 99.9a 1st bottomland, 9.7a timber & grassland.

GLAD REAL ESTATE
Rocky Hayes, Auctioneer/ Betty L Petersen, Broker
Office (785)-626-2039/ Home (785)-626-9600/ Cell (785)-626-4022
Visit our website for additional pictures: www.gladrealestate.com

Land Auction
Friday March 23, 2012 @ 10 A.M. CT
St. Mary's Hall, Herndon, KS
Sellers: Mildred E. Holmdahl, Revocable Living Trust
Selling: 657 (+/-) acres, Cropland & grassland

Tract I: W1/2 of W1/2 of 32-3-31, Rawlins County, 115.7a cropland, 46.3a grassland.

Tract II: E1/2 of NW and W1/2 of NE and NW1/4 of NW 1/4 of 5-4-31, Rawlins County, 145.8a cropland, 52.7a grassland.

Tract III: SE1/4 of 6-4-31, Less the grassland along the west side of said tract, Rawlins County, 132.8a cropland.

Tract IV: SW1/4 of NW1/4 and NW1/4 of SW1/4 and all remaining grassland located in the S1/2 and W1/2 of SW1/4 and SE1/4 of 6-4-31, Rawlins County, 163.2a grassland.

Tract V: A combination of Tract III and Tract IV.

GLAD REAL ESTATE
Rocky Hayes, Auctioneer/ Betty L Petersen, Broker
Office (785)-626-2039/ Home (785)-626-9600/ Cell (785)-626-4022
Visit our website for additional pictures: www.gladrealestate.com

MACHINIST/MAINTENANCE/NATOMA CORP.

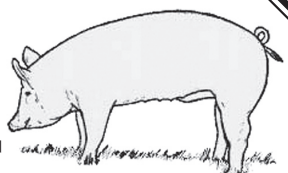
Natomacorp is hiring for the following positions:

Machinist and Machinist Trainee positions available. Ideal candidates should pay strict attention to detail and have strong math and measurement skills. **Maintenance or Maintenance Trainee** position. Responsible for the maintenance of all plant machines and all building facilities.

Applications are available at www.natomacorporation.com or by stopping by our office on East Highway 36, Norton. (785) 877-3529

MAINTENANCE/HUSKY HOGS

HUSKY HOGS, LLC.
IS LOOKING FOR A FULL TIME
Maintenance Worker



Experience a plus but will train the right individual. Benefits include: BCBS health insurance, longevity bonus, and paid vacation. Wages based on experience. For application call 785-854-7666 or stop by our office located 2 miles west of Long Island