

## CARD OF THANKS

THANK YOU to family and friends for your greetings and wishes in making our 50th Anniversary a special event. - Eugene and Margaret Wetter - 6/28 -

THE FAMILY OF Winona "Nona" Graf Amen would like to thank everyone for their thoughts, prayers, cards, flowers, memorials, and other acts of kindness shown to us at the time of her passing. She was an amazing wife, mother, grandmother and friend, and will be missed by all who knew her. Your kindness will not be forgotten, and we wish God's blessings to each of you. - Walter Amen; Dennis and Judy Graf and family; Joyce and Dennie Lofgreen and family; Steve Graf; Julie and Steve Graf-Frye and family. - 6/28 -

## GARAGE SALE

GARAGE SALE - Saturday, June 29, 7:00 a.m.-? 312 S. Norton, Norton, KS. Furniture, dishes, tools, clothes, lots of miscellanaous. - 6/28 -

## NOTICES

LENORA FRIENDS of the Library project is sending the former Lenora School library books to Moore, OK. Needing donations for the transportation of this bountiful bunch of books. The donations may be sent to Lenora Friends of the Library, Box 146, Lenora, KS 67645 or left at the Lenora Public Library by July 8, 2013. If more donations are collected than needed for transportation they will be given to the Moore Schools Library Fund. Thank you ahead for your consideration of helping with this project. - 7/5 -

NORTON FARMER'S MARKET - Saturdays 8 a.m. to 11 a.m. on Hwy. 36 across from Shopko. Fresh produce, baked goods, jellies, plus!!! - tfn -

FAMILY LOOKING for a nice four bedroom home with garage to rent. Call 785-871-8277. - 7/2 -

SPRING CLEANING: Carpet Cleaning - 3 Room Special - Only \$159.95! Dry-Foam safe & Green Seal approved. Serving

## NKESC ACCEPTING APPLICATIONS

**The Northwest Kansas Educational Service Center is accepting applications for the 2013-2014 school year**

- Head Start Aide/Thomas and Wallace County
- Head Start Teacher/Rawlins and Cheyenne County
- Interrelated Teacher
- Paraprofessionals

Applications are available at [www.nkesc.org](http://www.nkesc.org) or call 785-672-3125. Applications will be accepted until the position is filled. \*NKESC is an EOE\*

## HELP WANTED/HUSKY HOGS, LLC

### Husky Hogs, LLC

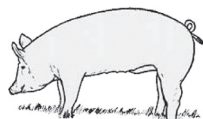
LONG ISLAND, KANSAS

Are you ready to join a growing team?

**WE'RE LOOKING FOR A FULL TIME Herdsman at our Nursery Site**

We offer competitive wages and benefits including: health insurance, safety and longevity bonuses, and paid vacation!

Please Call Marianne for a confidential interview (785) 854-7666.



## HELP WANTED/SWINE MANAGEMENT

### NOW HIRING GOOD PEOPLE

Swine Management in Long Island, Kansas has a finisher and breeding position open.

Applicant must be dependable, willing to learn and work as a team. We offer: Competitive wages, retention bonuses, paid vacation and sick time as well as health insurance.

Call 785-854-7460 Ext. (4) or (3) for applications

NWKS mileage free since 1987. A+ Cleaners (785) 538-2526 or (785) 443-5400. Johnene Cheney. - tfn -

## SERVICES

JACOBS SERVICE, your authorized Traeger Grill dealer. See our selection of grills, pellets, rubs and spices at West Highway 36, Norton, Kansas. Pellets are \$13.50 per bag EVERY DAY! - tfn -

## SEPTIC TANKS

SEPTIC TANKS PUMPED and systems installed. Call Logan Septic and Water. 785-543-7772 - tf -

## TREE SERVICE

ABEL TREE SERVICE - Fully insured, free estimates, stump grinder, bucket truck. 785-871-7275. - tfn -

## FARM SERVICES

GRAHAM DIRTWORKS, LLC offers Trenching Services for water lines, hydrants, electrical, etc. Backhoe Services and Skid Steer mounted backhoe - general skid steer work, etc. Willing to travel. For info call Mark at 785-543-4336. - tfn -

## STORAGE UNITS

CLEAN AND SAFE STORAGE - Units available. Call 785-877-2420, Craig Renner, Norton. - 8/12 -

## HELP WANTED

FULL TIME TRUCK DRIVER wanted hauling mostly round bales, home every evening, nice equipment, excellent pay, Northwest Kansas, 785-871-0817. - 6/28 -

HAYING OPERATION looking for full or part-time help in Norton area. Excellent equipment, excellent pay. 785-871-0817. - 6/28 -

HELP WANTED - Norton Total/Diamond Shamrock. Apply in person. Serious inquiries from people who want to work only. - 7/2 -

PROGRAM DIRECTOR - The Rock Christian Youth Center in Norton, KS is seeking a part-time Program Director. The main duties of this position include event planning; volunteer recruitment and coordination; recruiting and supporting the youth board; fundraising; schedule preparation and attending a monthly board meeting. For more information contact Bill Johnson at 785-871-0429 or e-mail us at: [office@therocknorton.org](mailto:office@therocknorton.org). - 7/5 -

BOOKKEEPING POSITION at Norton Livestock. 30-35 hours per week. Start Aug. 1, 2013. Job application may be picked up at Norton Livestock, any morning, Monday through Friday. - 7/5 -

PHILLIPS COUNTY RETIREMENT CENTER has full and part time openings for C.N.A.'s and C.M.A.'s. Excellent wages and working conditions. New benefit package available including paid single health and dental plan. Call (785) 543-2131 for more information or stop by to pick up an application. - 7/5 -

HELP WANTED - 32-40 HOURS per week - Cook/Dietary Aide position and 20 hours per week Dietary Aide position available at Logan Manor. For details, call Patty at 785-689-4201. - 7/12 -

PSI TRANSPORT is always looking for good company livestock and grain haulers as well as shop mechanics. Competitive pay, life/health/dental benefits and bonus program available. EOE. (785) 675-3477. - tfn -

MIDWEST FEED DRIVERS - Must have Class A CDL, 2 years OTR experience. We offer competitive wage plus insurance. Call Gene or Chris at 888-796-9246. - tfn -

WANTED - Your business online at [www.NWKansasOnline.com](http://www.NWKansasOnline.com) - tfn -

## SWATHING/BALING

CUSTOM SWATHING and Baling. Round or square bales. Call Eric at 785-202-1140. - 7/9 -

## HELP WANTED



- Health Information Coding Specialist: FT position
  - Clinic Receptionist: FT position
  - REGISTERED NURSE**
  - Manor RN: PT Night -Excellent shift differential pay & hiring bonus
  - Hospital RN/LPN: FT night position
  - LICENSED PRACTICAL NURSE**
  - Clinic LPN or Medical Assistant: FT positions
  - Certified Surgical Technologist: FT position
  - NURSE AIDE POSITIONS**
  - Manor C.N.A.: PT position
  - MISC. POSITIONS**
  - Floor Tech: FT evening position
  - Environmental Services Assistant: FT position
  - Nutrition Services Assistant/Cook: PT positions
  - Nutrition Services Evening Supervisor: PT position
- For more information or to apply on-line, visit our website @ [www.trivalleyhealth.com](http://www.trivalleyhealth.com)
- Employment Opportunities ~ or ~
- Mail Application/Resume to: Human Resources  
PO Box 488  
Cambridge, NE 69022
- P (308) 697-1136  
F (308) 697-3331
- Equal Opportunity Employer

CUSTOM SWATHING AND BALING available. Call Jim Wagoner in Lenora, KS, 785-567-4494 or 785-202-9163. - 7/5 -

## DISC ROLLING

DISC ROLLING - Rolling on the farm. Call Ron Lewis, Eustis, NE. 308-486-3501. - tfn -

## HOUSE FOR RENT

FOR RENT - Two bedroom house in Alma. Call 785-669-2145 or 785-871-2020. - tfn -

## APARTMENT FOR RENT

The Norton Housing Authority, Public Housing for low-income, has a two-bedroom apartment available for rent. Applications can be picked up at 213 Horace Greeley Avenue, Norton, KS 67654. - tfn -

FOR RENT - INDEPENDENT living apartments at Prairie Meadows and Bieber Cottages in Norton now available for persons 55 years and above. For more information about these comfortable living apartments, call Administrator Nancy McGinnis, phone 785-877-2601. - tfn -

## HOUSE FOR SALE

NEW REDUCED PRICE on 5 bedroom, 2 bath country home on 15 acres with horse corral, pasture, machine shed and grain bins. Now \$169K. VIEW AT: <http://kansas-country-home4sale.com/> or call 1-800-440-0467. - tfn -

REAL ESTATE agencies online at [www.NWKansasOnline.com](http://www.NWKansasOnline.com) - tfn -

## REAL ESTATE

MAKE THE WEISER CHOICE - Contact Weiser Realty for all of your real estate needs at 785-877-2185. Jolene L. Weiser, Broker; Samantha M. Hager, Salesperson; Sally Nelson, Associate Broker. - tfn -

LET US LIST your property. Call Duane McEwen, listing agent for Home Range Realty Inc. at 785-877-3032. - tfn -

## CRP ACRES

WANTED: CRP ACRES to drill. Contact: Leroy Reitcheck, 785-657-1043. - tfn -

## LODGE NOTICES

**American Legion Harmonson Redd Post No. 63**  
Second and Fourth Monday 7:30 p.m.  
Gary Erlenbusch, Commander  
Curt Archibald, Adjutant

**Eagles Lodge FOE 3288**  
Second and Fourth Wednesday, 7:30 p.m.  
Larry Hawks, President  
Secretary, Ron Miller

**Veterans of Foreign Wars**  
Reg. 7:00 p.m.  
First Mon. of each Month  
Curt Archibald, Commander  
Joe Ballinger, Quartermaster

**I.O.O.F. No. 157**  
Meet at Eagles Club  
First and Third Thursday  
Each Month at 7:30 p.m.  
Geneva Tier, Noble Grand  
Randy Knoll, Secretary

**The American Legion Riders Post 63**  
Meet at 5:00 p.m. at the American Legion Building on the Second Sunday of Every Month  
website: [www.alr63.org](http://www.alr63.org)

## WHEAT TO HARVEST

- 6/28 -

LOOKING FOR Wheat acres to harvest. JD S-series combines with supporting equipment. Tim Ostenrude, phone 701-360-0388. [www.ostenrudeharvesting.com](http://www.ostenrudeharvesting.com) - 7/5 -

## LIVESTOCK FOR SALE

CROOKED CREEK ANGUS Registered Bulls for sale. Yearlings and 2-year-olds. Delivery and sight unseen purchases available. Bloodlines include: Rito, 3x25, Freedom, Just Right, and New Design. Quiet and relaxed dispositions. Adam Jones, St. Francis, KS. (785) 332-6206. [www.crookedcreekangus.com](http://www.crookedcreekangus.com) - N 7/5 -

AG BUSINESSES ONLINE at [www.NWKansasOnline.com](http://www.NWKansasOnline.com) - tf -

## STEEL BUILDINGS

ASSORTED STEEL BUILDINGS - Up to 50% off cost to put up. Erection info available. Source# 18X 800-964-8335. - 7/5 -

## BOAT/JET SKI FOR SALE

FOR SALE - 1996 Smoker Craft Fish and Ski Boat, 125 horsepower Mercury, \$10,900.00. 2011 Kawasaki Jet Ski, STX157, only 3 hours. \$8,500.00. Call 785-871-1662. - 7/30 -

## MOWER FOR SALE

FOR SALE - Ariens Zero turn 42" Lawn Mower, 3 blades. 874-4929. Leave message if no answer.

## SEALED BID ONLY

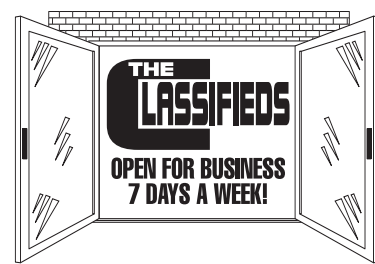
FOR SALE - Sealed Bid Only. 1999 Ford E-350, Wheeled Coach, 102,637 miles, 7.3L/V-8, automatic, diesel. <http://www.nexttechclassifieds.com/listings/view/577655/>; 1990 Chevy 30 Chevrolet Utility Van, 66,658 miles, 8 cylinder, automatic, gas. <http://www.nexttechclassifieds.com/listings/view/577657/>. Send sealed bids to: Norton County Clerk, P.O. Box 70, Norton, KS 67654. Closing date for bids will be end of business July 12, 2013. Bids will be opened July 15, 2013. Any and all bids can be refused at the discretion of the County Commissioners. For more information on item: Call or E-mail and ask for Brian or leave a message. E-mail: [ntcoems2@yahoo.com](mailto:ntcoems2@yahoo.com) (785) 877-5784. - 6/28 -

## LAND FOR SALE

FOR SALE - 25 Acres Bottom Ground, close to Prairie Dog Creek and Norton. Call Gail Boller, 785-877-3529-Weekdays; 785-877-3677-Evenings and Weekends. - 7/12 -

## AUCTION SERVICE

McEWEN AUCTION. Experienced in all types of sales. Contact Duane McEwen at 785-877-3032. - tfn -



**EXPERIENCE THE QSI ADVANTAGE!**

NFBA Multi-Award Winner 2012

- RESIDENTIAL • COMMERCIAL
- AGRICULTURAL • EQUESTRIAN

- Free Estimates
- Free On-Site Consultation
- 5-yr. Workmanship Warranty
- Pre-engineered for code laws
- Licensed ICC General Contractor

- 3-Ply Laminated Posts (60 yr. warranty)
- Steel Roof and Sides (40 yr. warranty)
- 16 colors available
- 8' o/c Post Spacing - 4' o/c Truss Spacing
- 90 MPH Wind Load/30 lb. Truss Load
- Site Preparation available

**50' x 80' x 16'**  
Includes 1-24x16 split slider & 1-3' entry door

**QSI \$31,500**  
Quality Structures, Inc. Specials include: Delivery & Installation  
Travel charges may apply.

[www.qualitystructures.com](http://www.qualitystructures.com)

**800-374-6988**

**750+/- ACRES CROPLAND, GRASS & FARMSTEAD**

"MULTI-PARCEL" **ABSOLUTE LAND AUCTION**

**DECATUR COUNTY, KANSAS**

**FRI., JULY 19, 2013 @ 10:30 AM, CDT**

**AUCTION LOCATION:**  
The Gateway, Oberlin, KS

**SELLERS:**  
Diederich Family

**750 ± acres contiguous cropland and pasture, plus the farmstead**

Land will be offered in 4 tracts & in combinations of tracts. Tract 2 (the farmstead), will sell separately and will NOT be offered in combination with other tracts.

**LEGAL DESCRIPTIONS:**

**TRACT 1:** All the cropland acres in the S/2 of 26-1-29 (155± acres)

**TRACT 2:** Farmstead in SE corner of SW/4 of 26-1-29 (6.1 acres)

**TRACT 3:** SE/4 of 27-1-29 & a tract of grass in the S/2 of 26-1-29 (245± acres)

**TRACT 4:** SW/4 of 23-1-29; NW/4 & a tract of grass in S/2 of 26-1-29 (350± acres)

**INTERNET BIDDING AVAILABLE!**

For a virtual tour & brochure visit [www.farmandranchrealty.com](http://www.farmandranchrealty.com)

**FARM & RANCH REALTY, INC.**  
1420 W. 4TH • COLBY, KS 67701  
Toll Free: 1-800-247-7863  
**DONALD L. HAZLETT**  
BROKER/AUCTIONEER  
"When you list with Farm & Ranch, it's as good as SOLD"