



THE CLASSIFIEDS- Where the Deals Are!

FOR RENT

Commercial building in Goodland. 403 E. 19th. Oversized garage door, office and restrooms. Call (785) 728-7160. G7/3-8/3

FIFTH STREET APARTMENTS in Bird City has for rent two-bedroom duplex apartments. Applications must income qualify. For information contact N.W. Kansas Housing, Inc. at (785) 421-2151 or pick up an application at Century II in Bird City. We offer Equal Housing Opportunity and are handicap accessible. SFH tfn (52)

Large 1 bedroom apartment in St. Francis with laundry \$300/mo. Call 303-960-8912. (tfn) SFH (tfn)

Downtown office space available at 5th and Franklin, Colby. Call 785-462-3939. C9/19-TFN

The Norton Housing Authority, Public Housing for low-income, has a two-bedroom apartment available for rent. Applications can be picked up at 213 Horace Greeley Avenue, Norton, KS 67654. N tfn

Independent living apartments at Prairie Meadows and Bieber Cottages in Norton now available for persons 55 years and above. For more information about these comfortable living apartments, call Administrator Nancy McGinnis, phone 785-877-2601. N tfn

Houses and apartments Goodland, KS. All sizes. Call for details. (785) 890-6538. G6/20-tfn

Houses & Apartments. Cole Real Estate in Goodland 785-899-2683. G tfn

REAL ESTATE

Steel Buildings Big or Small Save up to 50% For best deal with contract construction to complete. Source #18X - 800-964-8335. C7/31-8/7

Home for sale: 606 E. Ash, Oberlin, 3 bedroom, 2 bath, full basement, attached garage. (785) 475-3184 or (785) 475-2103. O7/31tf

For Sale by Owner-6 Bedroom 4 Bath home in quiet neighborhood at 340 East Walnut, Colby. Large Home Office with private entry. Nearly 2,000 sqft on main floor; 1,700 in basement. Beautiful kitchen/dining with granite counters, oak floor.

Move-in ready. Leave message at 785-460-6501 or view on nextclassifieds.com. Serious inquiries only. C7/31-8/7

Three Bedroom House for sale -1 bath, unfinished basement, 33x40 shop. 324 South First, Norton. Phone 202-2468. N8/7

Need to Relocate: For Sale - 4 bedroom, 1 bath, 2 story, 15 miles west of Norton, under 2 acres, 6 outbuildings, all appliances included, extra large chain link fenced back yard, have \$63,000 invested, offers over \$50,000 considered, 785-693-4502. N8/7

REAL ESTATE SERVICES

Let Us List Your Property. Call Duane McEwen, listing agent for Home Range Realty Inc. at 785-877-3032. N tfn

Make the Weiser Choice - Contact Weiser Realty for all of your real estate needs at 785-877-2185. Jolene L. Weiser, Broker; Samantha M. Hager, Salesperson; Sally Nelson, Associate Broker. N tfn

STORAGE UNITS

Clean and Safe Storage Units available. Call 785-877-2420. Craig Renner, Norton. N8/12

STORAGE UNITS AVAILABLE. Various Sizes. St. Francis Mini Storage. 785-332-4809. 28-31*. SFH 7/11-8/11

FARM SERVICES/EQUIPMENT

Disc Rolling-Rolling on the farm. Call Ron Lewis, Eustis, NE. 308-486-3501. N tfn

VEHICLES/RECREATION

2006 GMC Sierra 1500 crew cab, 89K, 5.3L, V8, 271, 4X4, cloth, DVD player, good tires, dual exhaust, Bose sound systems, power seats, \$15,500.00 - 785-443-0815. C8/7-8/14

1987 Chevy Caprice, auto., four door, \$800.00. 308-737-9380; and Charcoal Grill, \$15.00. Phone 308-493-5343. N8/7

LIVESTOCK

For Lease or Sale-Charolais or

Angus Bulls. 785-693-4565. N8/7

PASTURE WANTED

Grass pasture WANTED to rent, Adam Jones, 785-332-6206. SFH tfc

FOR SALE

For sale blond china hutch. In great condition, top part comes off. 5 foot wide, 7 foot tall and 18 inches deep. 3 glass doors on the top of the hutch, bottom buffet has two doors on sides and five drawers. Asking \$250 obo. Call Kim at (785) 470-7612. O8/7-9/4

1987 Olds 88, 175,000 miles, runs great, \$700. Aqua VU Scout II underwater camera, like new, \$75. Call (785) 821-1178. G8/7-8/7

Available for immediate delivery from Iawisil Forest Nursery, Cascade Iowa (Website: iawisil.com). 1) Approximate 1 mile of 6" aluminum irrigation mains (30' lengths) with valves and openers, mostly to 4' sidelines 2) Approximately 11 miles of 4" aluminum irrigation line, some mains, mostly 40' lengths with riser and sprinkler head. 3) Also, some reparable pipe and some misc. lengths, and various angle joints. 4) Two John Deere/Berkley pumps with intake valves and screen, ready to go. Phone: 563-852-5056 Fax: 563-852-6056 Email: leo@iawisil.com. C8/7

Side by side Whirlpool refrigerator. \$350. Call in evenings, (785) 891-3761. G7/31-8/14

For sale - Used refrigerators, electric stoves, small gas stove, under counter dishwashers, 30 day guarantee 785-694-8013. C7/17-8/7

Poulan Pro 22" self-propelled Lawn Mower, key start, front wheel drive, high rear wheels, easy empty bag, Briggs and Stratton Engine (785) 470-7324. O7/10

FIREWOOD FOR SALE IN GOODLAND. Call (785) 890-7224. G12/12-tfn

Rubber stamps, custom made, The Country Advocate, 1205 Main, Goodland, Kansas. (785) 899-2338.

LET US HELP YOU
ONE-STOP shopping
For All Your **Advertising Needs**

WE CAN PUT YOUR AD IN SEVERAL PAPERS

Classified Word Ads, Classified Display Ads, Display Ads and Inserts

Norton Telegram	4,500 Circulation on Monday
Tuesday and Friday	1,600 Circulation
Oberlin Herald	2,105 Circulation
Colby Free Press	1,954 Circulation
Goodland Star New	1,501 Circulation
St. Francis Herald	1,237 Circulation
Bird City Times	1,028 Circulation
Country Advocate	17,600 Circulation

THE NORTON TELEGRAM

215 SOUTH KANSAS AVENUE, NORTON, KANSAS

Call Dana Paxton at 785-877-3361 or email dpaxton@nwkansas.com

Decatur County LAND AUCTION

141.39 Acres (+/-)

Sellers: Jon F. and Carol K. Peters, Ana Rosa Wishon, Jon Wishon

Friday, Aug. 16, 2013 - 4 p.m.

SALE LOCATION: Oberlin American Legion, 114 S. Rodehaver Ave., Oberlin, KS 67749.

LAND LOCATION: From the intersection of Highways 383 and 123 at Dresden, KS, go 2-1/2 miles east on 383. Signs will be posted.

LEGAL DESCRIPTION: The Northeast Quarter (NE1/4) of Section Eight (8), Township Five (5) South, Range Twenty-seven (27), West of the 6th P.M., Decatur County, KS.

TERMS: 10% down day of sale, balance at closing with certified funds on or before September 16, 2013.

POSSESSION: March 1, 2014.

MINERALS: Sellers are reserving 100% of minerals for 10 years or as long as production exists, if any.

TAXES: 2012 taxes were \$373.22. Sellers pay 2013 and prior years taxes; Buyers pay 2014 and subsequent years.

TITLE EVIDENCE: Decatur County Title & Abstract will be closing agent. Sellers and Buyers will share 1/2 and 1/2 for title insurance and closing costs.

INSPECTIONS: All inspections shall be Buyers responsibility. Johnson Realty, Inc. and its agents make no warranties about this property.

EASEMENTS: This sale is subject to all right-of-ways and easements, whether recorded or not, and to oil and gas leases of record, if any.

CRP PAYMENTS: Buyer receives 2/3 of payments of \$1,098.00, expiring in 2025.

FSA INFORMATION:

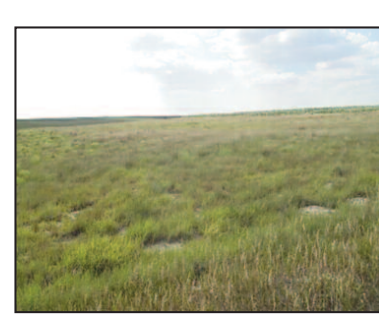
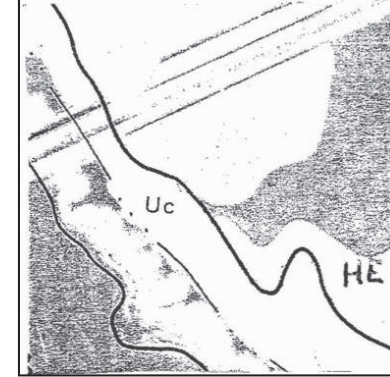
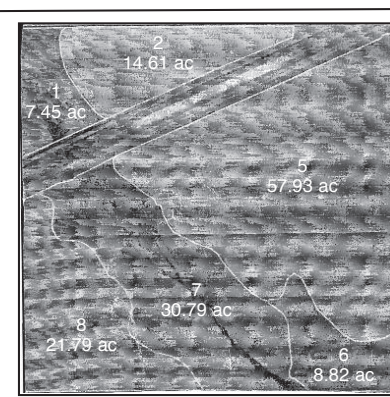
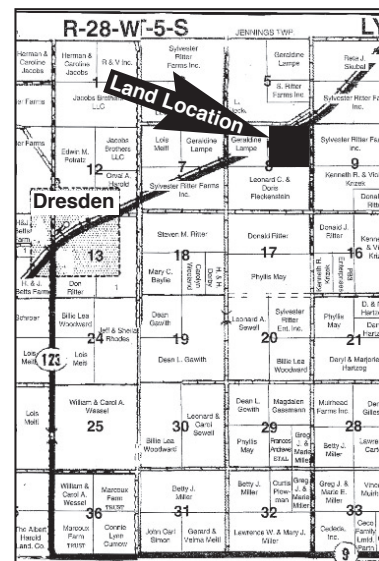
Farmland:	141.39
Cropland:	141.39
CRP	47.1
Effective DCP cropland -	94.29
Base acres:	
Wheat	67.1 yield - 37
Grain Sorghum	15.2 yield - 41

AGENCY: Johnson Realty, Inc., its Agents and Representatives are representing the Sellers and not the Buyer(s).

Announcements day of sale take precedence over printed material. Not responsible for accidents.

For a tour or information, call Lynn A. Johnson at 785-475-2785 or 785-475-8514.

AUCTIONEER'S NOTE: This property has been well-maintained and productive. CRP is well established for excellent hunting.



Fluorescent No Hunting Signs 50¢ EACH or 5 for \$2.00

THE NORTON TELEGRAM
215 South Kansas Avenue
Norton, Kansas
785-877-3361

CHECK OUT OUR WEB SITE AT: www.johnson-real-estate.com

Johnson Realty, Inc.

122 South Penn, Oberlin, KS 67749 • Roberta Johnson, Broker • Lynn A. Johnson, Associate Broker/Auctioneer
Call Lynn A. Johnson for sale bill or information: 785-475-2785 - Mobile: 785-475-8514

Joe D. Green, Salesperson/Auctioneer, Herndon
David Juennemann, Salesperson, Selden
Roger Emigh, Salesperson/Auctioneer, Cimarron
Michael Wilson, Salesperson, Kinsley
www.midwestauction.com
Randy Ostmeier, Salesperson, Oberlin
Dianne Bremer, Salesperson, Oberlin