

# Registration opens for Farm-to-Fork

Those interested in the future of Kansas farms, food and communities are invited to join the Kansas Rural Center and the city of Greensburg for the southwest Kansas Farm-to-Fork Summit on April 29 in Greensburg. The event will be held at the Kiowa County Community building, 720 N. Bay Street, from 9:30 a.m. to 4 p.m.

The southwest Kansas Farm-to-Fork Summit is one of at least three regional meetings that will be held across the state to open up dialogue about the current environment around Kansas farms, food, and community health. Participants at all summits will have the opportunity to participate in the dialogue and connect with others who share similar interests or concerns for their communities.

Policy is a strategy that can bring desired, long-term change to a community, region, and state. The summits will focus on specific policies that impact

small to medium scale market production and accessibility of locally produced food at community, regional, and state levels. Participants will have the opportunity to voice feedback on several different policy ideas that could help advance the vision desired for the farm and food future.

Examples of topics that could be discussed at the Southwest KS Summit in Greensburg include current and future water issues that impact food production, regulatory clarity and coordination across agencies that enforce food laws in Kansas, or support for producers to increase production.

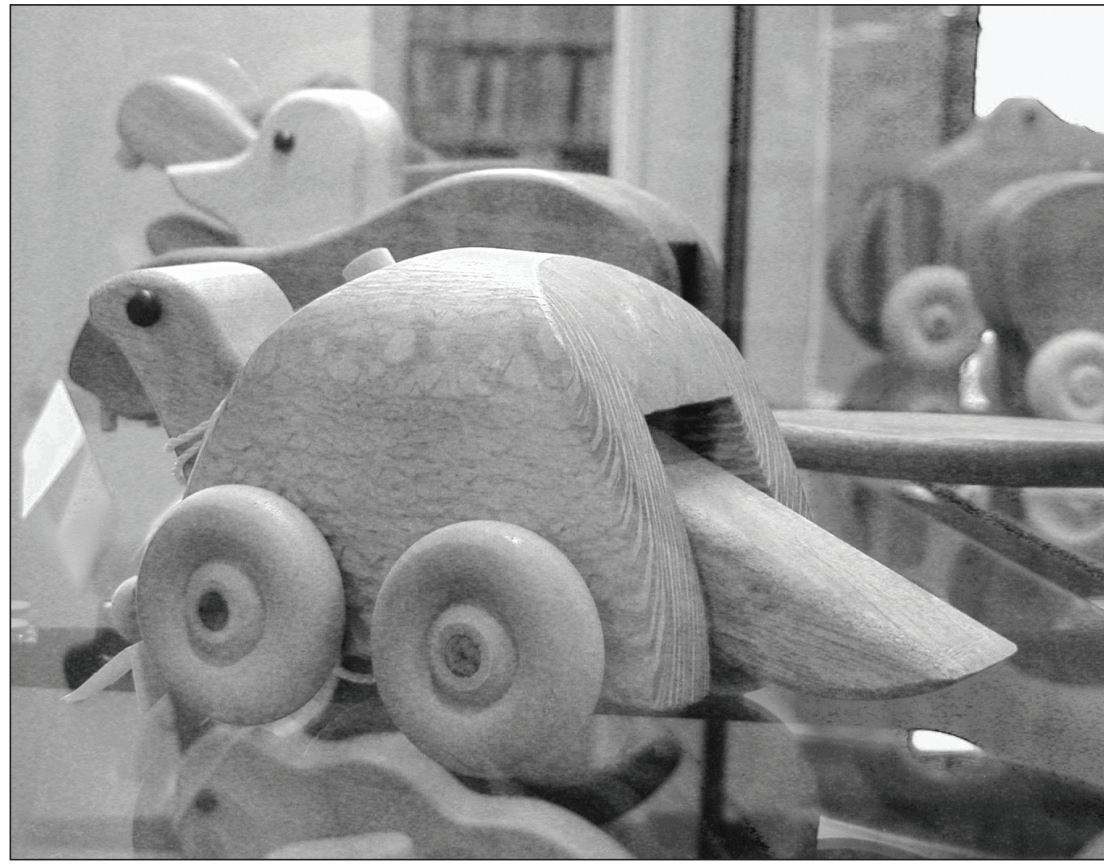
Registration for this summit is open to anyone interested in or has a stake in the Kansas farm and food future. A fee to attend is \$15 per person which includes lunch from the local deli. To register online visit, [kansasruralcenter.org/southwest-ks-farm-to-fork-summit](http://kansasruralcenter.org/southwest-ks-farm-to-fork-summit).

After the Southwest summit on April 29, stick around for a tour of Greensburg! In 2007, the city was destroyed by an EF5 tornado. Since then, Greensburg has risen from the rubble and now has the most LEED certified buildings per capita in the world. This progressive community's eye for future offers a state of the art school and hospital, downtown shopping, and entertainment.

The next Farm-to-Fork Summit will be held in Iola, Kan., on May 29, 2014. Check back soon for more information and registration this and other summits across the state at [kansasruralcenter.org/category/projects/community\\_food\\_solutions/](http://kansasruralcenter.org/category/projects/community_food_solutions/).

For more information about this initiative visit [kansasruralcenter.org/community\\_food\\_solutions](http://kansasruralcenter.org/community_food_solutions) or contact Initiative Coordinator, Natalie Fullerton at 402-310-0177 or [nfullerton@kansasruralcenter.org](mailto:nfullerton@kansasruralcenter.org).

# Wooden toys on exhibit



Don't forget to take time to visit the Norton Public Library to see the new exhibits.

Norman and Vicky Wendel, Almena, are sharing their beautiful homemade wooden toys with us. Made from many different woods, poplar, tulip, walnut, butternut, maple and padauk, the toys come in many shapes and sizes. On display are an alligator, butterfly, beaver, hippopotamus, frog and others. Norman started making toys for his grandchildren in 1987, and has been busy making wooden toys for over 20 years.

Seth Henrickson, age 12 years, is sharing his collection of John Deere tractors. He was six years old when he started collecting. His favorite pieces of farm equipment are the air seeding set, grain trailer set and the grain cart set. Seth

has fun building farms, with his tractors, in the dirt. The farms include fields of corn, wheat, built with a John Deere disk and builds roads with a John Deere road grader. Seth also has Ford, Case and New Holland Model tractors. Who would guess that Seth wants to live on a farm and have farm equipment when he grows up!

Darilyn and Bill Peterson and their grand-daughters, Allison and Morgan Peterson, are presenting a polished rock display. Their collection started as they took walks in their neighborhood and nature walks at Prairie Dog State Park. They have accumulated quite an awesome collection of rocks.

Grandma Peterson mentioned how she had always wanted a rock polisher since she was a child. For Christmas

2013 the grandparents gifted a rock polisher to the girls (and themselves). Since then they have polished two batches of rocks, which are the rocks you see in their display.

The polishing takes approximately four weeks per batch. It has been a fun project watching ordinary rocks be transformed into beautiful gemstones. They also search resources to identify the rocks or gemstones.

We thank the Petersons for sharing their polished rock display for us to see, learn and enjoy.

In the Art Gallery, the display of quilts by members of the Heritage Quilt Club is still in place until after Easter.

Take advantage of this opportunity to see these family collections; you will be glad you did

# Winter of 2014, most expensive in six years

The winter of 2014 that appears to be over was the most costly since 2008 for the Kansas Department of Transportation.

The Department of Transportation spent an estimated \$22 million on materials, labor and equipment usage to keep state highways clear and open for travel. That amount compares to \$23.7 million in 2008. This year's winter costs break down to \$8.50 per registered vehicle.

"I want to thank our crews for their dedication and hard work to keep Kansas roads open in some very difficult conditions. Winter maintenance takes a substantial amount of effort and money, but the cost to the state would be much greater if the crews didn't maintain the system as well as they did," said Transportation Secretary Mike

King. This season Department of Transportation crews worked 550,000 hours, used 591 dump trucks and treated/plowed some 2.7 million lane miles.

The Department of Transportation maintenance experts said the broad scope of this year's storms, along with frigid temperatures, combined to make this an expensive winter season. The least amount the Department of Transportation has spent on winter maintenance in the past seven years was \$6.8 million in 2012.

The 2014 figures are estimates. The numbers typically aren't finalized until the end of the fiscal year on June 30.

**Winter 2014 by the numbers**  
591 Dump trucks  
2.7 million Miles treated/

plowed	550,000	Labor hours	550,000
	125,000	Tons of salt	90,000
	90,000	Tons of sand	5.2 million
	5.2 million	Gallons of brine	33,500
	33,500	Gallons of magnesium chloride	
<b>Annual winter expenses</b>			
2008	\$23.7 million		
\$9.10 per registered vehicle			
2009	\$11.3 million		
	\$4.30		
2010	\$20 million		
	\$7.70		
2011	\$17.9 million		
	\$6.90		
2012	\$6.9 million		
	\$2.70		
2013	\$18.6 million		
	\$7.20		
2014	\$22 million*		
	\$8.50*		

\*Estimated costs

# STUDENT NEWS

## NORTON COMMUNITY HIGH SCHOOL FEBRUARY STUDENTS OF THE MONTH



Student : Jessica White  
Parents : Ted and Sherry White  
Grade: Senior  
Nominating Staff Member: Miss Tamra Cochran  
Comment from nominating staff members:  
"I nominate Jessica White. Jessie is a self-starter and very responsible young lady. She is kind, courteous and respectful of all."  
Factoids about Jessica  
Favorite Class : English  
Favorite Drink : Chocolate

milk  
Favorite Color : Orange  
Favorite Food : Shrimp Alfredo  
Favorite Movie : Frozen  
Favorite Saying : "Story of my life"  
Favorite Song : Sugar We're Going Down by Fall Out Boy.  
Favorite Hangout: Don't have one.  
Personal Hero : My older sister, Crystal White  
Future Plans : Go to college for Early Childhood Education.



Mrs. Lindsey Bailey and Mrs. Nancy Sebelius  
Comment from nominating Staff Members:  
"He is a great student who works hard to do well in school."  
Mrs. Lindsey Bailey  
"Jared is kind, friendly and compassionate towards all with whom he associates: peers, classmates, underclassmen, teachers and sponsors. He is always positive and an excellent role model. Jared also models school spirit as a yell leader for Norton Community High School. I know Jared works really hard in all his classes, and spends an inordinate amount of time trying to get everything just right, and to learn as much as he possibly can. For

his work ethic, his positive attitude, and for being a good role model, Jared Shelton deserves to be the Student of the Month."  
Mrs. Nancy Sebelius  
Factoids about Jared  
Favorite Class : Art  
Favorite Drink : Love's Slushie  
Favorite Color : Red  
Favorite Food : Mexican  
Favorite Movie : Les Misérables  
Favorite Saying : Alright...  
Favorite Song : None  
Favorite Hangout : My house.  
Personal Hero : The creator of Netflix.  
Future Plans : School of Architecture at Kansas State University.

# PUBLIC RECORD

**Accident Report**  
**March 3-A** silver 2006 Dodge, driven by Darin Williams of Norton, was traveling east on Highway 383 when a deer entered onto the roadway from the north ditch at mile marker 99. Williams was unable to avoid collision causing over \$1,000 damage to the vehicle. No injuries were reported and the accident was investigated by Norton Sheriff Officer Adam Wahlmeier.

**March 6-A** red 2009 Toyota Venza, driven by Sandra Olson of Oberlin, was traveling west bound on Highway 36 when a deer ran out in front of her. Olson was unable to avoid contact which caused over \$1,000 damage to the vehicle. No injuries were reported and the accident was investigated by Norton Sheriff Officer Rich Wenzl.

**March 6-A** grey 1988 Toyota, driven by Michael Brown of Norton, was traveling north bound on Road E-4 when Brown said he blacked out. The vehicle entered the east ditch, went up the steep embankment and rolled onto the driver's side. One injury was reported and he was taken into the Norton County Hospital. The accident was investigated by Norton Sheriff Officer Larry Land.

**March 9-A** lime green 2000 Kawasaki Ninja, driven by Timothy Boteler of Norton, was traveling what appeared fast headed west on Eagles road, applied the brakes too hard and laid the motorcycle on its left side. The motorcycle slid into the north ditch, flipping several times. Boteler was ejected off the motorcycle; the motorcycle

came to a rest on its left side facing east in the north ditch where Boteler was approximately five yards away from it. Boteler was taken to the Norton County Hospital with unknown injuries; the accident was investigated by Norton Sheriff Officer Adam Wahlmeier.

**March 10-A** dark blue 2005 Ford Van, driven by Shannon

R. Goss of Lenora, was traveling north bound when a deer entered onto the roadway from the west ditch. Goss was unable to avoid striking the deer which caused over \$1,000 damage to the vehicle. No injuries were reported and the accident was investigated by Norton Sheriff Officer Bobby Annon.

## New at Sander Furniture



**SOFAS**

FOR

**\$699<sup>00</sup>**



Any Promotional Fabric



301 W. Holme, Norton, Kansas - Phone 785-874-4974

## Spring Fling Week

Norton, Kansas



Tickets found on Thursday can be entered into drawing for over \$500 in prizes!!

Check out all the new fashions that can be found in Norton!

Refreshments, Prizes, & Fun for men, women & kids of all ages

Find out the winner of the business window decorating contest!

Businesses Open Late

Find tickets at businesses for your chance to win over \$500 in prizes!

Refreshments served

Bring your friends

Sales and specials at many locations

April 24th  
Ladies Night out  
6:30pm-8:30pm

For help with your advertising needs please give Dana a call 877-3361 email: [dpaxton@nwkansas.com](mailto:dpaxton@nwkansas.com)

**FARMLAND AUCTION & REALTY CO., INC.**  
240 ACRES +/- ROOKS COUNTY, KANSAS  
**AUCTION**  
FOR: JEROME BENOIT ESTATE - Partition #2013-CV-9  
Date: Monday, May 5, 2014 • Time: 10:30 A.M.  
AUCTION LOCATION: Rooks County Court House, 115 N. Walnut, Stockton, KS. Live Internet Bidding Avail.  
Legal Description: The SW/4 and W/2 of SE/4 of 34-7-20 W 6 PM Rooks Co., KS. F.S.A. Info: 132.2 acres cult. (planted wheat), 62.1 acres alfalfa, 5.6 acres trees, 29 acres CRP. Land Location: From Damar, KS: W on Hi-way 18, 1/2 miles to 2 Rd., then N 4.6 miles to Hi-way 24, 2.4 miles E to the NW Corner property.  
FOR TERMS, CONDITIONS, OR A COMPLETE BROCHURE, CONTACT:  
**Farmland Auction and Realty Co., Inc.**  
2707 Broadway, Hays, Kansas 67601 - (785) 628-2851 - Toll Free 1-888-671-2851  
E-Mail: [farmland@farmlandauction.com](mailto:farmland@farmlandauction.com) - Web: [www.farmlandauction.com](http://www.farmlandauction.com)

April 24th Ladies Night out 6:30pm-8:30pm