

# CELEBRATE NATURE'S BOUNTY AGRICULTURE WEEK

**National Ag Week**  
March 15-21

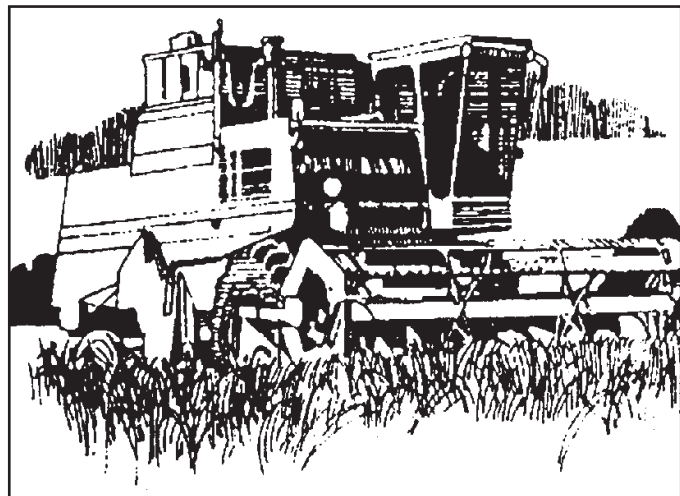
One bushel of wheat yields approximately 42 pounds of white flour or 42 one-and-a-half pound commercial loaves. One bushel of wheat yields approximately 60 pounds of whole-wheat flour or 90 one-pound loaves of bread.

**NEITZEL Insurance Service**  
785-332-2111 - 208 W. Washington • St. Francis

## AG WEEK

MARCH 15-21, 2009

Industrial uses of wheat grain include starch for paste, alcohol, oil and gluten. Wheat straw is used for newsprint, paperboard and other paper products.



**FRONTIER AG INC**  
Serving Northwest Kansas

Complete fertilizer and chemical sales and service  
785-734-2331  
Hwy. 36, Bird City

### READY TO MOVE FROM OUR LOT TO YOUR FIELD



**VERSATILE 250**  
An industry leading, full-featured tractor with more than 15 years of field proven performance

**YFS YOST FARM SUPPLY**  
www.yostfarmsupply.com  
PO Box 1080 ~ East Hwy. 36 ~ St. Francis, KS 67756  
Phone: 785-332-3351 ~ Toll Free 800-421-3914

*Celebrate Nature's Bounty*  
**NATIONAL AG WEEK**

◆ FERTILIZER APPLICATORS ◆ FERTILIZER SALES  
◆ GRAIN ELEVATOR OPERATIONS

**BARTLETT GRAIN COMPANY**  
785-332-3306  
Railroad & North Benton ~ St. Francis

# Students accept college scholarships

Justin Miller of Cheylin, and Scott Ford, Sam Sowers, Kimberly Voeller, Shawn Warren and Hailey Woodcox of St. Francis Community High School have accepted Fort Hays State University scholarships for the next academic year at a recent Student Recognition program in Colby.

Justin Miller accepted an \$800 Hays City Silver Academic Award and a \$900 Academic Opportunity Award in mathematics and computer science. He is involved in student government, band, football, baseball, golf, track, Family, Career, and Community Leaders of America, FFA and scholars bowl and is on the honor roll.

Miller, son of Randy and Sue Miller, McDonald, plans to major in computer science.

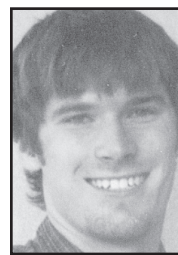
Scott Ford accepted a \$900 Academic Opportunity Award in technology studies and a \$700 Fort



Miller



Ford



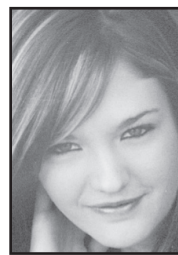
Sowers



Voeller



Warren



Woodcox

Hays Bronze Academic Award. He is involved with football, wrestling, track, drama, choir, 4-H and Boy Scouts.

Ford, son of Bryan and Loretta Ford, St. Francis, plans to major in technology studies.

Sam Sowers accepted a \$1,200 Miller Black and Gold Academic Award and a \$900 Academic Opportunity Award in geosciences.

Sowers, son of David and Teresa Sowers, St. Francis, plans to major in geosciences.

Kimberly Voeller accepted a \$500 Academic Opportunity Award in chemistry. She is involved in band, drama, speech, vocals, Honor Guard, Pep Band, swim team, dance, choir and Plum Creek 4-H and is on the high and superintendent's honor rolls.

Voeller, daughter of Gene and Patty Voeller, St. Francis, plans to major in chemistry.

Shawn Warren accepted a \$900 Academic Opportunity Award in physics and a \$700 Bronze Award.

He is involved in wrestling, was football captain and is on the high and superintendent's honor rolls.

Warren, son of David and Brenda Warren, St. Francis, plans a career in dentistry or physical therapy.

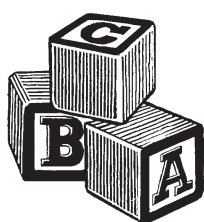
Hailey Woodcox accepted a \$500 Academic Opportunity Award in business. She is on the honor roll.

Woodcox, daughter of Johnie and Kathy Woodcox, St. Francis, plans to major in accounting.

## Introducing

**Atrinity Jordon Arensdorf**  
Atrinity Jordon (A.J.) Arensdorf, son of Adam and Amy Arensdorf, was born at 7:55 p.m. on March 12 at the Cheyenne County Hospital in St. Francis. Rebecca Allard, M.D. attended the birth.

A.J. weighed 7 pounds, 2.2 ounces and was 21-inches long.



Atrinity Arensdorf

## District engineer is named

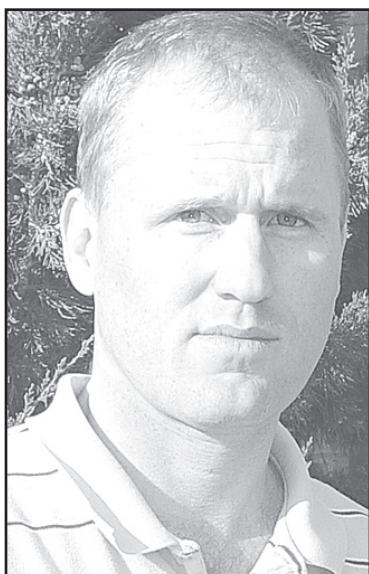
Professional engineer Jeffrey A. Stewart has been named district engineer for the Kansas Department of Transportation's northwest Kansas, 18-county region. He assumed the post Monday.

Mr. Stewart will serve as the top manager, supervising more than 300 Kansas Department of Transportation employees who work in the agency's Third District.

He graduated from Kansas State University in 1995 with a degree in civil engineering. He began working for Kansas Department of Transportation in 1994 as a summer employee in the Great Bend construction office. He was hired full-time as an engineer associate in 1995 for the Marion construction office.

In 2002, he was promoted to construction engineer in Norton's district office.

"I am excited for this opportunity and remain committed to working with everyone on transportation issues in northwest Kansas," said Mr. Stewart.



Jeffrey Stewart

Mr. Stewart and wife Teresa, who is also a civil engineer, live in Norton with their two children Coral, 5, and Tyler 1.

Stewart succeeds Chriss McDuffett, who recently retired from the district engineer's position and the agency after 25 years of state service.

## Student chosen for scholar class

Shawn Warren of St. Francis is among the students who Colby Community College has announced as a member of the 2009-10 Presidential Scholar class. Candidates for this prestigious award are nominated by their high school counselors.

The Presidential Scholars are selected on the basis of leadership, academic achievement, poise and potential for contribution to Colby Community College.

Presidential Scholars are expected to be leaders and serve as positive examples for the entire student body. They represent the Office of the President and are responsible for a number of campus activities.

The Presidential Scholars program is designed to prepare young men and women for future leadership through active participation and service.

Warren was among the 26 students chosen for the new school year. There will also be 10 returning Presidential Scholars next fall.



Warren

## Members gearing up for thresher show

By Linda Schneider  
dublinl@hotmail.com

The members of the Antique Thresher Show are already gearing up for the 2009 season.

Lonnie Coon, president of the Thresher Association for 2009, along with Ken Beougher, vice president; Norman Dorsch, director; Dennis Wright, director; and Chad Hendricks, secretary; met to discuss some of the show's scheduled events and elect Brandon Haack to the board of directors.

One of the items the members discussed was the car club giving up building number five along with the grassy area where the club displayed their cars.

A motion was made to open the area up for swap meet vendors to use at no charge. The vendors would have to pay for electricity and it will be on a first come first serve basis. Mr. Beougher mentioned that while it is not necessary to buy a membership with the

association, he would hope they would. The motion carried.

Mr. Wright suggested color-coding the electrical outlets so when a vendor did purchase the use of an outlet, it would be easier to designate and cut down the confusion. Member discussed the need to hire someone to clean before the show as needed and during the show. (see classified ad)

Suggestions for show events continued with the idea of having a pedal tractor attraction for the kids and trying the kite flying again, which had been enjoyed last year.

A new exhibition building had been built by Craig Clark and his father, Dean Clark, in memory of his son, David Clark. The new building will be a toy museum. In addition, the Thresher Show will have on display the Avery steam engine tractor, which will be 100 years old this year.



## DIRECTORY

To list your business drop us a card!  
Call 785-332-3162 today.

**Western Kansas Center for Comprehensive Dental Diagnosis & Rehabilitation**  
1690 W. 4th • Colby, KS  
460-3999 or toll free 1-866-305-3999

**Jeffrey M. Rayl, D.D.S.**

- Comprehensive bite analysis
- TMJ/TMD diagnosis and rehabilitation
- I.V. Sedation for all dental procedures including surgical removal of wisdom teeth
- Dental Implants: surgical placement and restoration
- Complete endodontic services (root canal) molar and anterior teeth
- Extensive cosmetic procedures
- Laser periodontal (gum disease) therapy
- Esthetic crown and bridge restorations; all ceramic (no metal)
- General dental procedures: cleanings, tooth colored fillings, partial dentures, biologic dentures

**Dean Ellner Inc., Realtors® Moving to Hays?**

25th & Vine Street, Box 536  
Hays, Kansas 67601-0536  
Office: (785)628-8268  
(800)286-8268  
Cell: (785)656-0387  
Email: lisakrull@deanellner.com  
Home Page: www.deanellner.com



Lisa Kramer-Krull  
REALTOR®

Whether you'll be a student at FHSU or relocating to Hays for employment, **I can find the ideal home for you.**

If you have any Real Estate needs in the Hays area, buying, selling, investing or information on rental property **Contact me, I'll help you out.**

**Bison**  
Rx compounding & Therapy

Customized prescriptions for patients with unique medical situations requiring unique medical solutions.

James E. Hampton, RPh, PCCA Member  
416 State Street, Suite A  
Atwood, Kansas 67730  
(785) 626-3237  
(800) 696-3214  
Bison Rxcompounding@atwoodtv.net

Located at the Burlington Country Club  
58680 Sneed Dr., Burlington, CO  
James Thomas - 719-346-7855

☛ Catering ☛ Special Events  
☛ Corporate Parties

**We can host up to 300 for Weddings, Banquets & Parties.**