

Equipment for city park has been ordered

By Peggy Horinek
phorinek@nwksas.com
Mayor Scott Schultz started the Monday meeting by presenting a plaque on Spotlight the Positive to Janet Jensen. The city recognizes her for all her hard work and time in making the Food Pantry a success.

She started working with the Food Pantry 3 years ago and has grown with the food and money donations of individuals and businesses. It is discreet and a way to help people get on their feet. She was pleased that a branch of the Food Pantry has been started in Bird City. With the holidays approaching, donations would be welcome so that everyone who needs a holiday basket will be served. The holiday baskets are always given out on Saturday before the holiday.

Parks and Recreation
Carla Lampe, council member, reported on the Park and Recreation Committee meeting. She said that the overlays for the signs on both the east and west sides of town should be arriving within a few weeks. The playground equipment has been ordered and that it went over the estimated cost by \$941.99. The United Methodist Thrift Store has been generous with a \$2,000 donation to the park program. When the playground equipment arrives it will be stored in the old firehouse until spring and the grounds have been enlarged and prepared for the equipment.

Cheyenne County Development

Chuck Krebs had asked the city if it would write a letter of support which could be sent out to businesses and individuals interested in starting a business in St. Francis. After discussion, the council agreed to write the letter as the city will do whatever it can to help new businesses.

Holiday banners

There are nine large brackets for hanging banners on the highway. The council has decided to put those on Main Street. They will need to order more brackets to cover the nine block stretch they wish to put banners on. There will be 20 small and nine large banners which will say "Happy Holidays." The banners, which are now being ordered, will be double sided so they can be read from either side.

Property insurance

The city has five buildings which had hail damage. They are city hall, library, theater, bandshell and old fire station. It was voted to use an upgraded overlay on some of the roofs. The city's cost after insurance will be approximately \$13,000. The upgraded overlay holds up well to hail and has a 10-year guarantee.

Police report

Shane Guggenmous, chief of police, gave a report on their calls during the month of September. They had stayed busy. He said he was trying to rid the city of pit

bulls and that he would. When asked if it was against the law to own a pit bull in the city limits, he said that, yes, they were. He said that he knew of a few grown pit bulls and some pit bull puppies that have come into St. Francis but that they would be gone soon.

Other business

The E-waste pick up will be in St. Francis on Thursday, Oct. 15. It will be located behind the museum this time due to weather concerns.

Attendance at the theater is down and ideas are needed to try to bring it back up.

Potholes in the streets in town were discussed and J.R. Landenberger stated that he had received the cold mix needed and they were working on them.

Some of the furnaces are not working properly at the new emergency building, but Dale Weeks, council member, said that it was due to duct work. He said that the duct work was built, just not hooked up to the cold air returns on the emergency medical service side of the building. They would be working on this.

Executive session

J.R. Landenberger asked for a 10 minute executive session and Chief Guggenmous also asked for an executive session to discuss personnel. After returning to regular session, no decisions were made.



DIRECTOR OF NURSES, Tammy Fogg, registered nurse, out of Goodland, is going over some of the services being offered by ResCare HomeCare. Certified nurses aides standing are left, Rachel Schmidt, Tiffani Graham, and Hailey Frewen and seated is Mary Pevler, licensed practical nurse in St. Francis.
Herald staff photo by Karen Krien

Health agency hires locally

By Karen Krien
karen.k@nwksas.com

ResCare HomeCare is at work in Cheyenne County. The staff is helping seniors and those recovering from illness and injury. They also work with people with physical disabilities who require personal assistance.

The nationally owned business with a branch in Goodland has hired local people to serve Cheyenne County Mary Pevler, licensed practical nurse; and certified nurses Aides, Hailey Frewen, Tiffani Graham, Rachel Schmidt and Amanda Stinemetz. The agency is licensed in Cheyenne, Sherman, Rawlins, Wallace and Thomas Kansas counties and is also able to serve those living in rural homes.

"ResCare is a provider under various state-funded programs and clients do not necessarily need to be homebound," said Mrs. Fogg.

The goal of the staff is helping

residents live life on their own terms.

"ResCare recognizes the quality medical services available in Cheyenne County and we do not intend to take away from services already available but add to the community", said Ms. Pevler.

Among the services offered is meal planning and preparation, light housekeeping, running errands, shopping, transporting clients to medical and/or lab appointments and offering professional nursing.

"Whether you or a loved one is recovering from illness, injury or surgery, living with a chronic disability or dealing with the natural process of aging, our dedicated employees at ResCare are here to help," said Ms. Pevler.

The staff, she said, is available 24 hours a day, seven days a week.

"We pride ourselves in hiring well-trained local people in your community," she said.

ResCare also offers Rest

Assured, which is a broadband internet connection discreetly-placed camera and sensing devices which are placed in a client's home. Tele-caregivers, working from a state-of-the-art network support and response center in Lafayette, Ind., can monitor the home, engage the client in a two-way communication as well as provide the client with watchful support. If the client should have an emergency staff in Indiana pages the local nurses and they call on the client. Family members are also able to visit with the client through the internet connection.

"This is especially helpful with clients suffering with dementia or Alzheimer's disease", Ms. Pevler said. "It gives the client independence while safeguarding their safety and security."

There are 175 ResCare HomeCare agencies employing 44,000 throughout the United States. For more information, contact Mrs. Fogg at 785-728-7198.

Hospice care is worldwide

You may or may not have heard about Hospice Services, Inc. partnering with the Palliative Care Program of Marangu Lutheran Hospital in Tanzania, Africa, through Foundation of Hospice in Sub-Saharan Africa. What you need to know is how beneficial the partnership is toward accessing resources. While heartfelt personal and professional friendship is at the heart of the partnership, fund development is equally

important.

The first part of October, Eliamani Shayo, Hospice Coordinator of Palliative Care Program of Marangu Lutheran Hospital and her husband, Pastor Shayo will be visiting Hospice Services, Inc. Through this visit Hospice Services hopes to raise resources for the Tanzania hospice program.

The greatest challenge African hospice and palliative care programs face is lack of funding.

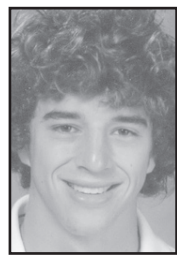
It is amazing how far a U.S. dollar goes for hospice in Tanzania. An amount of \$1,200 covers a professional nurse for one year and \$1,500 would provide a social worker. While \$25 would cover a month's worth of medications for one patient. Compared to the rising cost of healthcare in the U.S. this seems very economical.

Hospice Services goal is to send \$5,000 every year. Funds for the Palliative Care Program of Marangu Lutheran Hospital are raised separately. Memorials, donations, and funds raised with fund-raising events do not go towards the Tanzania hospice. The donations already given were specifically earmarked for the cause. This policy will continue.

The Board of Directors, staff, and volunteers are excited to learn more about hospice care in Tanzania. Connecting with colleagues who strive to provide dignity and comfort at the end of life is a vital piece of hospice care. But to connect with those who provide so much care with so few resources is a humbling experience.

Student receives honor

Miles Legere, Overland Park, a junior at Blue Valley West High School, was inducted into the Blue Valley West chapter of the National Honor Society on Wednesday.



Legere

A student's selection is based on demonstrable merit in four categories: Scholarship, Leadership, Character and Community Service.

The selections were made after eligible students were invited to submit personal information about their activities and involvement in community service, along with an essay. Each student's application was scored by two faculty members.

Members must complete 25 hours of community service by the end of the school year in May.

Miles is the son of Shawn and Leigh Legere of Overland Park and the grandson of Betty Jean Winston of St. Francis and Scotty and Libby Legere of Hays.

Vap Construction, Inc.
Atwood, KS
1-866-492-1978
Commercial & Residential
Metal Roofing & Shingle Roofing
Tyson or Jeff Vap
785-626-5150 785-626-5110
Fax: 785-626-9411
Email: vapconstruction@att.net
Fully Licensed & Insured
Stimulus Package Rebates Now Available
Call Today for a Free Estimate!

Bring In Your Semi Truck To Be Serviced

- Tire Sales & Repair
- Vehicle Wash
- Light Trailer Repair
- Bearings Packed
- Light Mechanical
- Vehicle Service
- Lawn Mower Service & Light Repair
- 4-Wheeler Repair

For other needs talk to one of our servicemen, we might be able to help you.

Don't forget to have your antifreeze checked.

Equity Exchange Station
785-332-2421

Owned by the farmers and ranchers of this community since 1913

We will continue to provide Daylight Donuts Plus we are adding area produced Manna Bakery items Specialty orders welcomed!

Majestic Service
510 W. Hwy. 36 • 785-332-2905
St. Francis, Ks. 67756

Video Kingdom and Verizon Wireless — Presents —

- America's Largest and Most Reliable Network.
- Innovative products and services that allow customers access to the latest and greatest in technology from a single multi-function device.
- Free mobile to mobile calling to over 80 million customers.
- A new lineup of unique handsets offering multiple functions from one device.
- Expert advice and support seven days a week from a local retailer with over 19 years experience in the wireless business.

Innovation, Service and Technology It's All Here On October 19!

Video Kingdom
SHARE THE EXCITEMENT!
~ Mon.-Sat. • 10 a.m.-6 p.m. ~ Sunday • 1-5 p.m.
414 Washington • St. Francis • 785-332-3207

Happy 80th Birthday!!

Love,
Your Family

DARLENE ZWEYGARDT
celebrates her 80th birthday on October 17th —
Please send Best Wishes to
520 E. 2nd St., St. Francis, KS 67756

St. Francis FFA

Fruit, Meat & Cheese Sale

Great Christmas Gifts

Contact any FFA member or call 785-332-8161

Greenline Open House
Saturday and Sunday
Oct. 24 & 25

There will be drawings & prize giveaways!
Enjoy tea, coffee & cookies.

Check out the great gift items, toys, cookbooks, scrapbook items & Ladies work gloves!

If you like Green, you will love what we have!

GREENLINE, INC.
Wheeler, Ks.
785-332-2124 Toll Free 800-832-2124