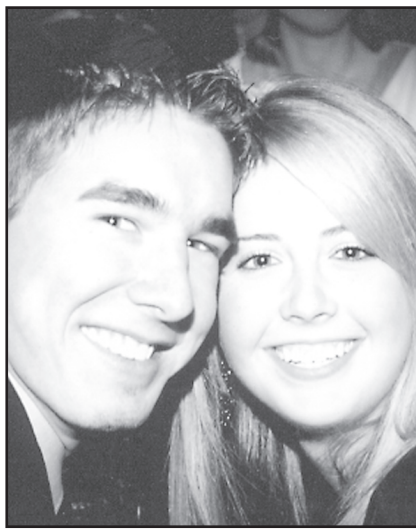


Couple plan wedding



Zwegardt — Hursh

Christina Lynn Hursh and Dillan Charles Zwegardt are planning to exchange wedding vows on Jan. 2 in Manhattan.

Parents are Norman and Robin Hursh of Lenexa and Ryan and Darci Unger and Keith Zwegardt of St. Francis.

Christi graduated from Kansas State University in May 2009 with a degree in sociology with an emphasis in criminology.

Dillan will graduate from Kansas State University in May 2010, with a degree in construction science and management.

Lots of items offered at PTA book fair

The St. Francis PTA is holding a book fair on both Tuesday, Dec. 1, and Saturday, Dec. 5, in the grade school cafeteria. On Tuesday, the fair is open from 4 to 8 p.m.; on Saturday, 1 to 5 p.m.

A huge selection of books, some at 99 cents, and other small items such as posters, pencils, scented bookmarks and plush, reading animals are available. There will also be a large cookbook section and software and technology section.

In addition to popular kids titles like the Harry Potter series and Junie B. Jones books, there will also be books for adults and teenagers like the "Twilight" series. There are accelerated reader qualified books and posters.

"This event will allow the community to buy quality books," said Leigh Ann Bandel, PTA president,

"while knowing that 65 cents of what they spend goes right back to our students. You can't beat that!"

With the current budget, she said, it is important to do cost-saving events.

There is also a loose change box at the Uptown Deli where people can donate money if they are unable to attend the fair. The money will be used to buy books at the fair and given to students who need more books in their home but are unable to have them.

People can come to the fair and donate a book bought at the fair. A bookplate will be placed in the book with the name of the donor or whomever it is in honor of.

"This is a great event to get some educational holiday shopping done while supporting children's literacy," Mrs. Bandel said.

Administrator named vice chair of board

Les Lacy, Cheyenne County Hospital administrator, St. Francis, was inducted as the 2010 vice chair of the Kansas Hospital Education and Research Foundation Board of Directors. This announcement was made last week during the foundation's annual meeting in Wichita.

Mr. Lacy was on the 2009 board and has been active with the foundation for several years. As board vice chair, he will assist the Kansas Hospital Education and Research Foundation as it fulfills its mission of facilitating community-based health solutions that work.

Established in the early 1960s, the Kansas Hospital Education and Research Foundation is a 501(c)3 organization that provides scholarships for hospital employees



Lacy

and has projects focused on rural health care, emergency preparedness and health care workforce.

The foundation is designed to be funded through contributions, grants and educational fees.

Country Christmas

Country Christmas, sponsored by Center Church Association, will be held at the Bird City Senior Center at 6 p.m. on Dec. 4.

Bring a can of soup, finger foods and Christmas stories, readings, and poems to share.

Board of Education

The St. Francis Board of Education will meet at 7:30 p.m. on Thursday, Dec. 10.

Cheyenne County Commissioners

The Cheyenne County Commissioners will meet at 8:30 a.m. on Monday in the commissioner's room at the courthouse.

Cheyenne County Fair Board

The Cheyenne County Fair Board will meet on Thursday, Dec. 3, at the courthouse.

Western Plains Arts Association

On Monday, Dec. 7, at 7:30 p.m., the famous Riders in the Sky will present the holiday show, "Christmas The Cowboys Way," in the Oakley High School Auditorium.

Cheyenne County Hospital Guild

The Cheyenne County Hospital Guild will meet at 2 p.m. on Monday, Dec. 7, at the Senior Citizen's Center. The program will be a Christmas Sendoff by the high school choir. Debbie Fiala is the director.

Dodge Ball Tournament

Thanksgiving break Dodge Ball Tournament sponsored by St. Francis Recreation Commission will be Saturday afternoon, Nov. 28. To join call Penny Gienger, 785-332-3949.

Big Brother/Big Sister

The Big Brother/Big Sister Christmas tree silent auction will be held from Monday, Nov. 30, to Dec. 10. Local businesses, clubs, organizations and individuals are asked to donate an artificial Christmas tree to be on display at Bankwest starting Nov. 30.

Those decorating trees can use a theme or they can just use the typical Christmas ornaments, bows or garland, said Bridgette Antholz, coordinator.

Those wanting to donate a tree should contact Mr. Antholz at Bankwest, 332-3333. Deliver the tree to the bank by 4 p.m. on Nov. 30.

Wreaths Across America Ceremony

Wreaths Across America is coming to WaKeeney on Dec. 12. The Civil Air Patrol will sponsor the 4th annual Wreaths Across America ceremony at the Kansas Veterans Cemetery at WaKeeney

at 11 a.m. on Dec. 12, when seven ceremonial wreaths will be placed to remember those who gave their lives in service for this country.

Veterans Affairs

Jody Tubbs, of the Kansas Commission on Veterans' Affairs, will be in St. Francis at 9:30 a.m. Thursday, Dec. 3, at the county clerk's office. People may also contact the Veteran's Affairs office in Colby any Monday, Wednesday, or Friday at 785-462-3572.

Recovery Today/Narcotics

Anonymous
Recovery Today group of Narcotics Anonymous meets at 8 p.m. on Sunday nights at the United Methodist Educational Building. Call (785) 332-6542 or 8607 for more information.

Sainty Serenity Seekers/Alcoholics Anonymous

Sainty Serenity Seekers open meeting of Alcoholics Anonymous is held at 7:30 p.m. each Thursday evening at the United Methodist Education Building at 104 W.

Webster, St. Francis. Call (785) 332-6542 for more information

Northwest Kansas Family Shelter

Northwest Kansas Family Shelter provides 24-hour-7 day-a-week services to victims of domestic violence and sexual assault. Weekly support groups are available for women and children within the northwest Kansas area. For information or in need of assistance, please call the toll-free number 1-800-794-4624.

Sainty students once again excel

Teachers directly responsible for Kansas Assessments include:

Sandy Smull, third-grade reading; Becky McAtee, fourth, fifth and sixth-grade reading; Marti Schlittenhardt, seventh-grade reading; Carla Schiltz, seventh-grade and eighth-grade math; Lisa Gibson, eighth-grade reading; Bruce Swihart, seventh grade science; David Morrow, 11th-grade reading; Jeff Olofson, 11th grade science.

St. Francis students once again excelled in this year's Standard of Excellence awards. The Kansas State Department of Education recently announced the recipients of the 2009 Standard of Excellence Awards which are given for outstanding achievement on the Kansas Assessments. The award is given to schools and individual classes within schools which meet a very rigorous public dealing with Kansas's assessment scores.

Rob Schiltz, superintendent, told the St. Francis Board of Education on Nov. 12, that the third, fourth, fifth, sixth, seventh, eighth and 11th grades had received the award in reading.

"To make it in every level of reading is fantastic," Mr. Schiltz said.

"Overall, the assessments were great," he said. "Everyone, our students and teachers, are doing a fine job."

Grades tested were third, fourth, fifth, sixth, seventh, eighth and eleventh. The award for math was received in fifth, seventh and eighth grades. In science, grades seventh and 11th were recognized with the award.

Because of the individual classes scoring as well as they did, the schools received the Building Standard of Excellence award for reading in the elementary school and junior-senior high school, math and writing at the junior-senior high school.

Public recognition

Students who scored exemplary will be recognized for their assessment success at an awards presentation. The date and place has been tentatively planned for halftime of the first home basketball game on Dec. 3.

Invitations will be sent to the parents of the students who earned the awards and they will be given a pass for free admission to the game.

School Menu

Monday

Breakfast: funnel cake, juice, cereal assortment, milk.

Lunch: taco salad with beef, cheese, chips, lettuce, tomatoes, sour cream, salsa, corn, strawberry strudel, milk.

Tuesday

Breakfast: biscuits with sausage gravy, juice, cereal assortment, milk.

Lunch: cheeseburger macaroni, green beans, French bread, apple wedge with caramel sauce, milk.

Wednesday

Breakfast: breakfast tornado, juice, cereal assortment, milk.

Lunch: pigs in a blanket, potato wedges, hot rolls, tropical fruit,

milk.

Thursday

Breakfast: frosted long John, juice, cereal assortment, milk.

Lunch: hot hamburger, mashed potatoes, brown gravy, tossed salad, lime Jello with pears, peanut butter finger, milk.

Friday

Breakfast: breakfast casserole, toast, juice, cereal assortment, milk.

Lunch: chili, crackers, carrots and celery, peaches, cinnamon rolls, milk.

• Salad bar is offered at noon daily in the junior/senior high school

Movie Review

A Christmas Carol

Ebenezer Scrooge begins the Christmas holiday with his usual miserly contempt, barking at his faithful clerk and his cheery nephew. But when the ghosts of Christmas Past, Present and Yet to Come

take him on an eye-opening journey revealing truths Old Scrooge is reluctant to face, he must open his heart to undo years of ill will before it's too late.

Weather

Date	High	Low	Prec.
Nov. 17	58	18	
Nov. 18	57	34	
Nov. 19	51	22	
Nov. 20	60	22	
Nov. 21	57	29	
Nov. 22	53	20	

Coming Soon!

2007 Explorer, XLT, 4x4, #T6407.....CALL
2007 Mercury Milan, #06176.....CALL

1997 F250 S/C XLT, 4x2, AT, V-8 Gas, 248K, #T7748D	\$4,250
2006 Freestyle SEL w/Leather, FWD, 45K, #T2434A	\$13,750
2004 Grand Marquis Ultimate, Loaded, 71K, #62526A	\$10,995
2008 Edge SEL w/Cloth, AWD, AT, 37K, #T5567	\$23,500
1999 Crown Victoria LX, Cloth, AT, 74K, #53870B	\$7,000
2007 Escape XLT, Cloth w/Sunroof, 4x4, AT, #5929	\$20,700
2008 F250 Crew, XLT, L. Box, 6.8L, 4x4, AT, #T1860A	\$27,500
2007 Taurus SE, FWD, V-6, AT, 27K, #22770	\$10,250
2006 Merc. Mariner Prem. Leather, 4x4, AT, 26K, #T0997	\$19,500
2006 F150 S/C XLT, 4x4, AT, 28K, Clean!! #T1925	\$23,500
2006 Five-Hundred SEL, Leather, V-6, FWD, AT, #26815A	\$12,500
2008 Lincoln MKX Elite, Nav., sunroof, 20K, #T1748A	\$36,500
2008 F150 Crew, K. Ranch, 4x4, 16K, #T6827A	\$33,500
1999 Dodge Caravan, FWD, AT, 148K, #T87720	\$3,000
2008 F250 S/C, XLT, 4x4, AT, 34K, #T0694A	\$26,500
1995 F150 R/C, XLT, Man., #T9938B	\$3,500
2004 Crown Vic LX, Leather, 4.6L, 85K, #08630A	\$9,500
2009 Ford Expedition, E. Bauer, 4x4, 22K, #T0243	\$39,700
2005 F250 Crew Lariat, 6.0L, 4x4, AT, 84K, #T5999C	\$27,500
2005 Five Hundred SEL, AWD, V6, AT, 145K, #T8182A	\$9,500
1980 F350 R/C, 4x4, 177K, #T9939B	\$2,500
1993 Chevy S/C 3500, 6.5L, w/haybed, AT, 4x4, #T3721C	\$3,500
1999 F250 S/C Lariat, 4x2, 5.4L, 111K, #T80009B	\$8,500
2000 Buick LeSabre Limited, FWD, AT, 75K, #7012A	\$7,500
2009 Ford Expedition, E. Bauer, 4x4, #T4600	\$41,250
2007 F150 Crew Lariat, 4x4, #T1611	\$31,500
2009 Taurus SEL, FWD, #22370	\$22,500

YOST FORD MERCURY

Your one stop Ford Store for over 27 years for sales and service.
530 E. Business US Hwy. 36 St. Francis, KS 67756
800-524-9678 Justin • Kodi
785-332-2188 yostford.com

PTA BOOK FAIR
Tuesday, Dec. 1, 4 - 8 p.m.
Grade School Cafeteria
Supervised play for kids in the gym from 6 - 8 p.m.
Saturday, Dec. 5, 1- 5 p.m.
During the Wrestling Tournament
This is a great way to get some educational Christmas shopping done for ALL ages.
Check out our HUGE selection of popular books!
Sponsored by the St. Francis PTA

NO HUNTING SIGNS 75¢
Available at:
The Saint Francis Herald
310 W. Washington • 785-332-3162

Check your renewal dates
— Current Rates —
The Saint Francis Herald
Area - \$38 KS - \$42
Out-of-State - \$48
Bird City Times
Area - \$33 KS - \$36
Out-of-State - \$40

American Profile
Celebrating Hometown Life
See American Profile magazine in this week's issue of
The Saint Francis Herald
(available in local area only)
Brought to you by
The Herald
"Your sponsorship could be right here.
For more information contact:
Casey at 785-332-3162

SHOWTIME: 7:30 p.m. 1 hr. 36 min.
A Christmas Carol
Nov. 27, 28 & 29 Action/Adventure, Drama, Science Fiction/Fantasy, Animation, Adaptation, Holiday and Remake
PG for scary sequences and images.
CHEYENNE THEATER St. Francis, KS 785-332-2747
Children 12 & Under: \$3 All Others: \$5

Christmas Open House
Ross Manufacturing
Main Street Office
Friday, Nov. 27th
5 p.m.
Be Sure to Check Treasure Hunt Numbers!
Premier Designs Jewelry Display
Sherri Stang- Independent Distributor

CHEYENNE COUNTY HOSPITAL 210 W. 1st • St. Francis, KS 785-332-2104
December Calendar
Dr. Frankum Dec. 2, 16
Dr. Reeves Dec. 23
Dr. Rubinowitz Dec. 8, 9
Dr. Saba Dec. 18
Dr. Curtis Dec. 11
Dr. Johnson Dec. 21
Dr. Uyemura Dec. 7, 21
Dexascan Dec. 9
Mammogram Dec. 8
Ultra sound and CTs offered daily
For more information or to schedule an appointment call 785-332-2104