

**RL WALZ and Shaylee Roundtree were among those at the promenade on Saturday.** Herald staff photo by Karen Krien

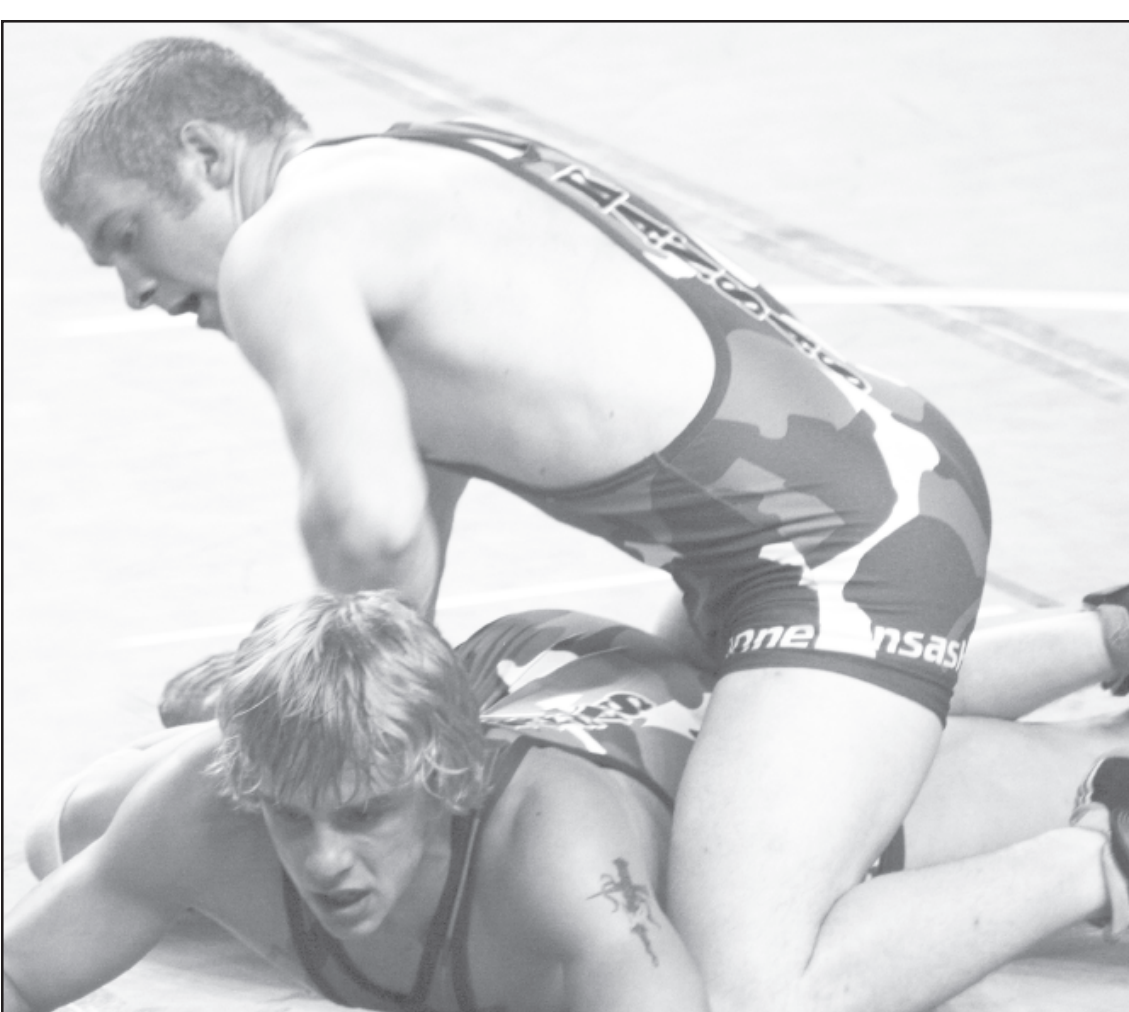
# Senior wrestler ends season

Clay Center senior, Kyle Allen, finished his high school wrestling career at Senior Nationals at Virginia Beach. He won three matches against wrestlers from Nebraska, New York and Tennessee and lost two matches to wrestlers from New Jersey and Ohio. The Ohio wrestler went on to take the National championship at 160 pounds.

Kyle is the son of Kelly and Tim Allen, Clay Center, and the grandson of Billy and Karen Krien, St. Francis, and OM and Joyce Allen, Clay Center.

Kyle placed first in the 4A State tournament, having a record of 33-1. His only loss for the season was against Judd Schroeder, Andale, earlier in the season. The final state match was once again against Schroeder. This match went into overtime and the ending score was 3-1. His other state matches were against Yingling, Spring Hill, 15-0 tech fall; Forsberg, Rose Hill, 10-4; and Hall, Fort Scott, 9-4.

He earned the honor of being selected to the North Central Kansas League All-League team at 160



**KYLE ALLEN, Clay Center, wins his match against Jared Brown, Shawnee Heights, at the Kansas Senior Classic held in Topeka.**

Herald photo by Kristi Guthmiller

pounds; and to the *Salina Journal* as part of the All-Area Wrestling Team.

He wrestled in the Kansas Senior Classic for the Small Schools team and defeated Jared Brown, Shawnee Heights, 8-7.

On March 14, the Clay Center

wrestlers were honored guests at the Topeka Capitol. They were recognized by the Kansas House of Representative in the morning and Kyle, along with his coach, Dennis Charbonneau, were allowed to go on the floor to represent the team. In the afternoon, the team was recog-

nized by the Kansas Senate. Rep. Vern Swanson, and Sen. Mark Taddiken introduced them.

The Clay Center wrestling team, for the first time, was the Class 4A Regional champions, North Central Kansas League champions and State champions.

# Tootsie Roll sales help local schools

Tootsie Roll candy is sold each fall by the St. Francis and Bird City Knights of Columbus Council 6665 members to supplement Special Education activities within the Cheylin and St. Francis schools. Recently checks for \$468 were issued to both schools for this purpose.

The Tootsie Roll Knights of Columbus fund raiser was first initiated in 1971 to provide financial assistance through grants to tax-exempt organizations providing training and assistance to individuals with special needs. Since that time, Councils all across the United States have conducted this annual event raising many thousands of dollars for this purpose. Of the total amount collected 20 percent is used to support state Special

Olympics activities. The St. Francis and Cheylin schools have used this donation to support special education "extra" program expenses incurred to allow students to fully participate in planned activities.

Tootsie Roll funds have supported restaurant lifeskills activities, state sponsored special events, project materials and some one-time expenses.

"The Tootsie Roll donation by the Knights of Columbus affords students opportunities and experiences that would not be possible without the funding," said David Zumbahlen, Cheylin principal. "The donated funds are a definite asset to our special education department."

## FESTIVAL

Continued from Page 1A

facturing, St. Francis Chamber of Commerce and Ken Bracelin Cattle.

The purpose of the festival, a project of the Kansas Sampler Foundation, is to provide the public a sample of what there is to see, do, hear, taste, buy and learn in Kansas.

The festival, now in its 18th year, was held on the Penner Farm near Inman for eight years before moving around the state every two years. In 2008 and 2009, the Festival will be held in Concordia.

The festival takes place Saturday, May 5 from 10 a.m. to 5 p.m. and Sunday, May 6, from 10 a.m. to 4 p.m. Opening ceremonies will kick off at 9:30 a.m. on Saturday.

For more information, go to [www.kansassamplerfestival.com](http://www.kansassamplerfestival.com) or call 800-879-9803.

## Ag Talk with Jeanne Window for planting corn



By Jeanne Falk

K-State Multi-County Agronomist The K-State Crop planting guide has set the suggested planting dates for northwest Kansas as May 1 through 20. Many producers consistently push the early part of this planting time frame, trying to position corn to avoid pollination during the hottest part of the summer.

When studying historical planting data in 12 central United States corn producing states, the key finding was that almost all states exhibited a significant shift to earlier planting. On average, across the entire region, corn is currently planted two weeks earlier compared with the early 1980s. It concluded that advances in technology, plant breeding and efficient farming practices have allowed corn to withstand less-than-ideal growing

conditions in the early spring.

So what happens when producers can't get into the field as soon as they would like to? How wide is the window for corn planting? Actually, the window is quite wide. In a planting date study on the Experiment Station in Colby, planting dates from April 15 to May 27 were investigated.

It was concluded the optimal planting dates were May 6 through May 9. Corn planted 10 and 20 days later (May 17 and 27) yielded 96 percent and 91 percent of the corn planted at the optimal dates. Corn planted earlier, on April 19 and 28th yielded 98 and 96 percent of the optimum planting date. Research from the University of Illinois found similar results. They also concluded that regardless of planting date (from April 15 to May

20), there was greater than 90 percent expected corn yield at 26,000 final plants per acre. They also concluded that the percent corn yield was related more to final plant stand than to planting date.

In addition, research by Bob Nielsen (Purdue) and Peter Thomison (Ohio State) shows that corn hybrids adjust well to delayed planting and adapted hybrids can be planted into early June without major risks of fall frost injury. They found that delayed planting decreases the time to physiological maturity (black layer). Thus, full season hybrids can be planted much later than we used to think they could be and they will still mature before the risk of fall frost is high.

I would like to thank my family and friends for all the care and concern shown to me before, during, and after my recent surgery. Thank you for the many prayers, flowers, cards and gifts; especially the chocolate! Thanks for running errands and doing things that I couldn't. The phone calls certainly brightened my days. I missed being able to go places and see people the most. I especially missed my little girls and my bowling friends. You are all very special to me.


Thank you ~ Vicky Harford

*Please Join Us For A*  
**Come & Go Bridal Shower**  
*for* **Cassandra Jantz**  
**Bride-Elect of Andy Zweygardt**  
**Sat., May 5 • 2-3:30 p.m.**  
**St. Francis Public Library**



Registry: Schultz's Ltd., Owens True-Value, JC Penney

**St. Francis Public Library**  
**BOOK SALE**



**April 20**  
**thru ????**

121 N. Scott • St. Francis

# "Hays Medical Center gives excellent, excellent care."

Ron Wentle, President, Golden Belt Bank

When oral medication no longer controlled his diabetes, Ron Wentle consulted with his doctor about changing to insulin injections. He began a series of diagnostic tests related to his diabetes and overall health.

One of the diagnostic tests was for sleep apnea, a condition in which air passages become blocked causing breathing to stop repeatedly during sleep and impacting the amount of oxygen and rest the body receives. Wentle learned that the lack of proper rest can affect the heart and – in the ensuing testing process – discovered serious cardiac problems.

"I had blockage in four arteries and so that lead to quadruple bypass surgery."

Preparation for his surgery was thorough and informative.

"I had never been through surgery, except when I was a young kid."

Wentle reviewed a videotape that walked him through the procedure.

"Knowing exactly what's going to happen, what all the procedures are, what the rehab is, everything you are going to be going through, then there's no surprises. You know what's coming."

In discussing options with his doctor and cardiac specialist, he was given the option of going elsewhere for his surgery but wouldn't even consider it.

"This is my home. I am proud that we have a quality regional hospital here and I want my surgery done here," he told them.

"During my surgery, the information beforehand, the procedures, the rehab afterwards, was excellent. Hays Medical Center gives excellent, excellent care."



**DEBAKEY HEART INSTITUTE**  
At HaysMedicalCenter  
**Bickle Pavilion**  
**2214 Canterbury Drive - Hays**  
**Toll Free – 888-625-4699**  
[www.haysmed.com](http://www.haysmed.com)

HealthGrades™, the nation's leading independent reviewer of healthcare quality, has ranked The DeBakey Heart Institute at Hays Medical Center among the Top 10 Hospitals in Kansas for Heart Surgery, and the Top 10% Nationwide for Coronary Interventional Services.



**"There's no surprises."**

