

Big Brother/Sister Bowl on Saturday

Big Brothers Big Sisters of Cheyenne County is holding the 2007 Bowl For Kids Sake event starting at 11 a.m. on Saturday, May 5, at the Cheyenne Bowl, U.S. 36. If there are more teams, a second session will be held.

Each team should have five bowlers and will have their own pledge sheet to collect pledges. All bowlers raising \$100 or more will receive a T-shirt. There will also be door prizes given away throughout the day.

"There are several different time slots available for teams to sign up," said Meghann Antholz, county case manager. "We have different time slots available for teams to sign up."

Those interested in participating can call her at 785-332-8989 or the Goodland office at 785-890-3665.

The bowling is free and the food and beverages will also be provided to bowlers. Everyone participating will have the opportunity to have a great time while raising money for The Big Brothers Big Sisters program.

The money will stay in the county and will help with costs of administration, case management, volunteer and family intake as well as general office needs. The funding has increased each year and the program leaders are hoping to make a positive impact on the youth in the community.

Obituary

Doris Diane Kite Warren

Died April 17, 2007

Doris Diane Kite Warren, 83, Lincoln, Neb., died peacefully Tuesday, April 17, 2007, at her home, surrounded by her family.



Warren

Doris was born to Edward E. and Ruby Kite in St. Francis, Kan.

She was the widow of Richard B. "Dick" Warren, former Emeritus Professor, Animal Science Department, University of Nebraska-Lincoln.

Doris attended Stephens College in Columbia, Mo., and graduated from the University of Colorado, Boulder, with a degree in pharmacy. She worked as a pharmacist in Lincoln for 20 years, including many years at Nevin Drug.

A charter member of Good Shepherd Presbyterian Church, Lincoln, Doris was also a member of University of Nebraska Lincoln Faculty Women's Club, East Campus Stars Extension Club, PEO Chapter FW, Bethany Book Group, 1954 Bridge Club, Lancaster County Chorus, and was PTA president.

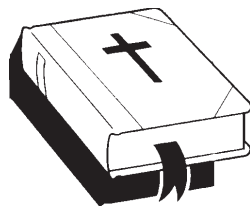
An indomitable spirit with a love for music, books, travel, and above all, family and friends, her life was constantly marked by grace, dignity and courage.

Survivors include sons and daughters-in-law, Robert Warren and Jacqueline Ferguson, Springfield, Ill., Reid and Rhonda Warren, St. Louis, Mo.; son, Richard Mark Warren, Lincoln; daughters, Lisa Warren, New York, NY, Gale Warren, Pacific Palisades, Calif.; daughter-in-law, Pamela Boyd of Columbia, Mo.; grandchildren, Aaron, Thomas, Haven, Olivia, Jack, Isabel, Samantha, Sean; brothers and sisters-in-law, Wendell and Dulcie Kite, Junction City, John and Elaine Kite, St. Francis, brother-in-law, sister-in-law, Drs. Roger and Linda Warren, Hanover.

She was preceded in death by her parents; husband, Richard B. Warren; and granddaughter, Anthea Reiningger.

In keeping with Doris's wishes, no funeral services are scheduled; a memorial celebration of her life will be held in the coming weeks. Memorial may be given to the R. B. Warren Scholarship Fund, University of Nebraska Foundation www.nufoundation.org; Lymphoma Research Foundation, Patient Aid Grant Program www.lymphoma.org.

Condolences or personal reflections may be sent online at www.roperandsons.com



THE GLASCO FARM damage after the tornado on March 28.

Times staff photo by Melinda Basnett

Organization helps the tornado victims

On March 28, the Bird City area was devastated by a tornado that stayed on the ground for several miles and destroyed the homes of John and Maria Kamla, Edward and Pyllis Carson, Nick and Heidi Ketzner and Lynn and Candy Glasco.

At that time, Mike Antholz, Grand Knight of the local Knights of Columbus Council, contacted the state Emergency Disaster Assistance Program chairman and through the program, set up accounts at the local grocery store for each of the families to allow them to receive \$200 worth of groceries that would be paid through the Knights of Columbus Emergency Disaster Assistance Program.

Along with that assistance Knights of Columbus Councils from District 54 which include Colby, Goodland, Sharon Springs and St. Francis/Bird City, went together and collected donations for the families, along with the

St. Francis Catholic Church in St. Francis and the Our Lady of Perpetual Help Catholic Church in Goodland. These donations were presented to

the four families prior to the monthly meeting of the St. Francis/Bird City Knights of Columbus on April 16 by Dick Pamell of Colby. Mr. Pamell is

the deputy for this district and presented each family with a check for \$575 for a total of \$2,300.

Couple announce upcoming wedding

Bruce and Sharon Feikert and Dr. Melvin and Barb Dunn announce the engagement of their children, Amber Danielle and Melvin Dustin.

Amber is a 2003 graduate of St. Francis Community High School and will graduate in May from Fort Hays State University with a bachelor degree in science degree in elementary education. She is currently student teaching in the first grade at St. Francis Grade School. Her grandparents are Marilyn and Stan Martin, Goodland, and Darlene and Ruben Feikert, St. Francis.

Dustin is a 2002 graduate of St. Francis Community High School and will graduate in May from Fort Hays State University with a bachelor degree in general studies. He is currently attending Cleveland Chiropractic School in Kansas City. His grandparents are Valora and Robert Rieger, Raytown, Mo., Carol and Melvin Dunn and great-grandfather, Herb Davison, all of Ogallala, Neb.

The couple will exchange vows on May 26 at Peace Lutheran Church in St. Francis.



Dunn — Feikert

RICK NEMETH

2007 REGISTERED ANGUS BULLS FOR SALE ON FARM
Ludell, Kansas • (785) 322-5505 or (785) 626-4309

LOCATION:
13 miles
northeast of Atwood, Kansas



HOFF
ONE OF
A KIND

EPD's	BW	WW	MILK	YW
	4.8	62	21	112

HOFF LIMITED EDITION S C 594
HOFF CHARGER S C 242
HOFF BOSS LADY S C 298
TC STOCKMAN 385
HOFF STOCK LADY S C 193
HOFF MISS DOMINATOR S C 781

The top performing bull of his calf crop and in the history of Hoff Scotch Cap Angus Ranch with a 205 day weight of 1030 lbs, 365 wt. of 1602, ranking first for 205 day weight, 365 day weight, Weaning Weight EPD and 365 Rib Eye Area. One of A Kind ranks in the top one percent for Weaning Weight EPD, Yearling Weight EPD, Ultrasound Rib Eye Area EPD and Ultrasound Percent Retail Product EPD.

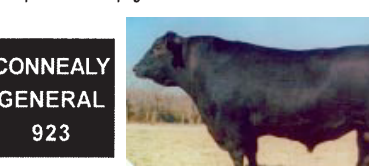


WAR
FORE
FRONT

EPD's	BW	WW	MILK	YW
	1.2	53	19	98

WAR TRAVEL 1101 8807 0045
WAR H SPINDE 0043 7519

This Fore Front sires calves are born very easily and grow rapidly with great thickness. He himself is the heaviest muscled, thickest, deepest easiest keeping bull to be found.



CONNELY
GENERAL
923

EPD's	BW	WW	MILK	YW
	4.9	73	10	107

GAR TRAVELER 8807
DHD TRAVELER 8807
GDR BLACK LADY 840
DHD TRAVELER 8807
GAR PRECISION 1880
GAR EXACT 2104
GT MAXIMUM
RIT0 342 OF SH11 GT MAXIMUM
RIT4SH11 OF 1814 RIT0 840
RONNA OF CONANGA 397
BRIST POWER DRIVE
ROMANTIC LU OF CONANGA
RHYTHM OF CONANGA

Connely General is a moderately framed, thick, easy fleshing bull that has very explosive growth. His females are thick topped and productive. General was one of the top selling bulls in the 2003 Connely sale. They retained use of him, and his sons, ranked III out of 450 2007 bulls.

2.2 5.3 19.95 average EPD's on Nemeth sale bulls.
2.6 36 18 66 EPD's for current sires of the Angus breed.
Sale bulls are in top 3% of breed for both weaning and yearling weights.

	BW	WW	MW	YW
1K=ONE OF A KIND	4.6	63	21	113
FF=FOREFRONT	1.2	53	19	98
KR=KRUSH	0.5	46	10	101
G=CONNELY GENERAL	4.9	73	10	107
GC=WWGRAND CANYON	0.8	45	20	86
CAN=LARKS CANYON	0.3	48	22	98
410-KRUGERRAND 410H	2.0	58	25	118

Tag	Birth Date	BW	WW	MW	YW	Birth Weight	Adj. 205 Weight	365 Day Weight	Cow	Bull
4	8/30/2005	1.4	48	14	86	62	681	1275	4109	KR
5	9/4/2005	1.4	44	14	86	60	782	1442	540	KR
7	9/4/2005	0.4	54	18	97	72	729	1407	2104	FF
8	9/8/2005	2.1	48	12	96	70	646	1113	441	KR
9	9/12/2005	3.4	59	17	100	80	789	1343	9026	G
10	9/13/2005	2.4	59	14	93	72	726	1259	241	FF
12	9/13/2005	2.0	62	14	101	79	731	1122	3203	G
14	9/15/2005	3.0	58	16	90	82	697	1325	074	G
18	9/17/2005	0.8	50	19	90	71	650	1122	292	FF
19	9/20/2005	2.9	52	20	91	76	704	1364	006	G
21	9/20/2005	2.4	52	18	100	76	663	1404	465	KR
24	9/23/2005	0.7	46	18	86	72	727	1397	S98	FF
26	9/23/2005	1.4	50	13	98	52	622	1255	415	KR
27	9/23/2005	1.4	50	13	98	52	608	1241	415	KR
29	9/23/2005	1.9	59	15	90	81	689	1343	S70	G
33	9/24/2005	2.0	59	18	93	74	622	1095	001	FF
34	9/24/2005	2.4	48	17	98	76	876	1463	103	FF
37	9/28/2005	3.2	56	17	92	80	730	1230	8001	G
39	9/28/2005	2.0	52	16	93	81	607	1281	126	FF
41	9/29/2005	1.8	53	20	94	71	677	1285	275	FF
45	10/1/2005	1.8	52	20	91	68	718	1297	130	FF
46	10/1/2005	2.4	60	16	95	76	611	1239	037	G
48	10/1/2005	1.8	48	19	98	77	814	1458	232	FF
52	10/1/2005	3.7	54	16	97	81	694	1262	282	FF
53	10/1/2005	2.0	57	17	92	80	632	1153	8012	G
54	10/2/2005	2.7	56	19	93	82	704	1480	067	G
58	10/2/2005	3.3	63	17	99	83	787	1325	113	G
60	10/2/2005	1.9	51	17	82	71	708	1301	5111	G
66	10/2/2005	2.0	49	13	101	74	752	1277	449	KR
69	10/2/2005	2.2	58	22	98	66	601	1143	482	KR
73	10/2/2005	2.0	55	18	104	82	827	1530	4125	KR
74	10/3/2005	3.0	52	16	88	79	671	1423	293	FF
75	10/3/2005	2.9	56	11	91	80	601	1094	5127	G
76	10/3/2005	2.8	60	16	97	78	754	1499	081	G
79	10/4/2005	2.0	59	16	96	80	749	1443	252	FF
80	10/4/2005	2.2	61	14	97	80	826	1162	058	G
83	10/5/2005	2.9	59	15	94	80	567	1282	024	G
84	10/4/2005	1.6	47	19	93	77	699	1078	128	FF
85	10/5/2005	1.9	50	22	104	82	845	1246	148	1K
88	10/5/2005	2.7	51	14	81	77	640	1182	492	V
90	10/5/2005	1.8	50	22	92	77	621	1270	116	FF
96	10/5/2005	2.7	52	15	94	80	809	1370	012	1K
101	10/7/2005	2.1	51	21	95	80	780	1318	428	GC
102	10/7/2005	2.3	53	14	101	64	768	1497	467	KR
103	10/8/2005	2.0	52	14	97	80	876	1573	348	KR
105	10/10/2005	3.6	63	20	110	82	769	1575	4273	1K
109	10/13/2005	3.0	50	12	104	82	827	1530	4125	KR
121	10/14/2005	2.6	55	21	95	80	600	1010	101	1K
122	10/17/2005	1.8	51	18	96	76	606	1080	296	FF
124	10/18/2005	2.1	50	20	95	77	610	1215	4126	GC
130	10/19/2005	2.5	50	15	101	80	645	1343	489	KR
131	10/19/2005	1.8	51	19	90	60	636	1091	457	GC
133	10/19/2005	2.0	52	20	93	78	665	1259	829	1K
136	10/19/2005	2.1	54	20	102	80	605	1089	4108	KR
140	10/19/2005	1.9	50	19	97	81	845	1246	148	1K
142	10/20/2005	1.9	56	20	93	77	674	1309	2139	FF
145	10/20/2005	3.0	56	19	100	78	855	1460	251	1K
147	10/20/2005	4.0	60	23	102	81	832	1337	302	1K
149	10/22/2005	1.3	49	20	91	64	773	1178	408	GC
151	10/22/2005	1.8	50	20	94	78	812	1352	9028	1K
153	10/24/2005	1.3	52	17	96	70	600	162	413	KR
154	10/23/2005	3.0	56	16	94	77	644	1309	156	1K
156	10/23/2005	1.9	50	19	97	80	768	1396	235	1K
157	10/24/2005	1.9	48	19	88	68	617	1234	454	GC
161	10/26/2005	2.1	52	22	94	80	749	1306	3204	FF
162	10/26/2005	1.3	50	20	90	70	666	1248	4223	GC
168	10/26/2005	1.6	54	18	97	74	747	1368	225	FF
170	10/26/2005	1.7	51	21	91	78	746	1373	3263	FF
171	10/27/2005	1.8	56	20	101	74	766	1281	32145	FF
175	11/1/2005	3.0	51	20	92	80	602	967	064	1K
176	11/3/2005	3.0	54	10	97	80	678	1124	3231	FF
174	11/5/2005	2.9	55	17	94	78	642	1286	3244	1K
177	11/7/2005	2.4	54	22	97	81	809	1453	3295	1K
178	11/8/2005	2.5	54	20	94	80	711	1222	3201	1K
182	11/13/2005	3.4	57	18	96	80	728	1306	268	1K
188	12/1/2005	1.8	50	20	90	68	731	1188	456	GC
189	12/7/2005	2.0	51	18	93	82	827	1402	490	GC
195	12/12/2005	1.9	50	19	90	67	869	1469	129	GC
207	12/15/2005	1.6	52	20	94	65	717	1031	4100	