

Vote for The Breaks as one of Kansas wonders

By Karen Krien

karenk@nwkansan.com

Cheyenne County residents need to fill out their ballot and vote for The Breaks which are located north of St. Francis.

The Arikaree Breaks is one of 24 finalists in the Eight Wonders of Kansas contest sponsored by a non-profit group.

The nonprofit group behind the Eight Wonders of Kansas contest got hundreds of submissions and has now selected 24 finalists. And, Cheyenne County's "Arikaree Breaks" is one of the finalists.

People are urged to study the information at www.8wonders.org. When ready to vote online, just click "register and vote" on www.8wonders.org. Those going online will be asked to register by providing their e-mail address, city and state. The e-mail address is the identity in the system and helps monitor the number of times the person votes. The e-mail address will not be sold or given out for any use.

One e-mail address is eligible to be used three times so everyone's friends and family without e-mail can use it. The deadline is midnight, Dec. 31. Gov. Kathleen Sebelius will announce the 8 Wonders of Kansas on Jan. 29, Kansas Day, at the state Capitol.

There are also a number of ballots on pamphlets being left at the St. Francis banks, city office, library, *Herald* office, senior center and the museum. People who are not comfortable voting on the web can cast their ballot by mail.

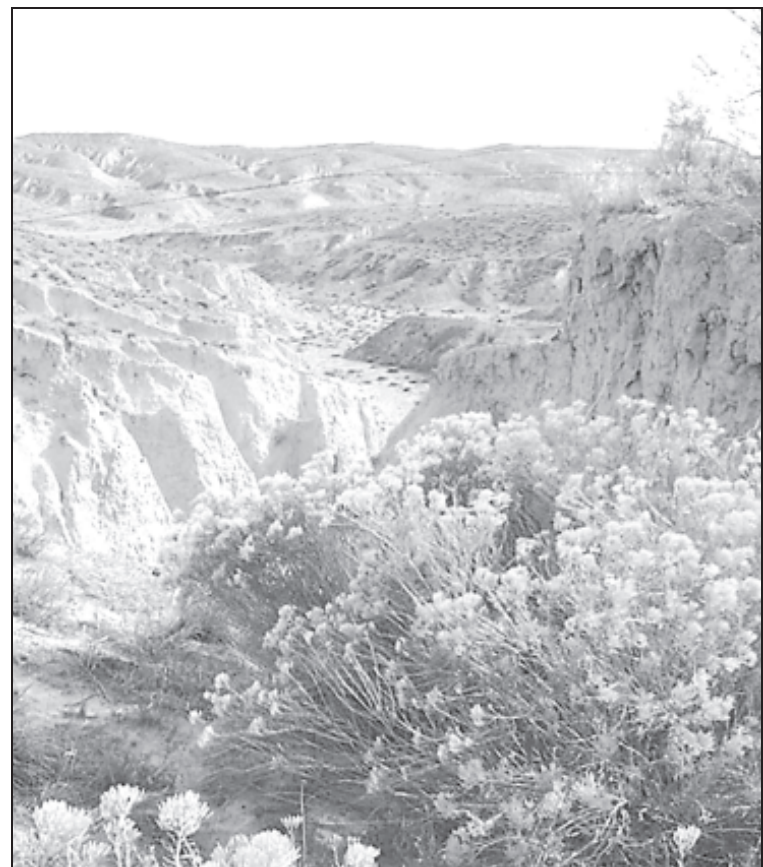
One of the oddities on the Wonders list is the big ball of twine in Cawker City, but buildings, historical sites and striking landscapes claimed most of the 24 spots.

That's in keeping with the philosophy of the Kansas Sampler Foundation, the organization that educates people about Kansas and is running the contest.

Nominees had to be publicly accessible and reflect one of the eight elements of rural culture the foundation uses to promote communities: architecture, art, commerce, cuisine, customs, geography, history and people.

The 24 finalists are:

- Arikaree Breaks, Cheyenne County, which feature rugged canyons and windblown silt areas called loess.
- Ball of Twine, Cawker City, billed as the largest ball of sisal twine in the world at a current 18,032 pounds.
- Big Brutus, West Mineral, the world's largest electric coal shovel at 160 feet tall.
- Big Well, Greensburg, among the world's largest hand-dug wells.
- Brookville Hotel, Abilene (formerly in Brookville), a restaurant serving icons of Kansas cuisine



Arikaree Breaks

(skillet-fried chicken, relishes, baking-powder biscuits) since 1915.

- Chase County Courthouse, Cottonwood Falls, built in 1873.
- Cheyenne Bottoms and Quivira National Wildlife Refuge, Barton and Stafford counties, migratory stops for North American waterfowl and shorebirds.
- Cimarron National Grassland, Morton County, more than 100,000 acres.
- Constitution Hall State Historic Site, LeCompton, the 151-year-old building where the LeCompton Constitution was drafted in 1857.
- John Steuart Curry murals, State Capitol, Topeka, depicting John Brown and the anti-slavery movement in Kansas Territory.
- Davis Memorial, Hiawatha, one man's memorial to his wife featuring 11 life-size statues of the couple.
- Eisenhower Presidential Library and Museum, Abilene, containing the papers of the only five-star general to become president of the United States, serving from 1953 to 1961.
- Fort Larned National Historic Site, Pawnee County, considered one of the best-preserved frontier Indian posts in the American West.
- Garden of Eden, Lucas, a folk-art sculpture garden built from 113 tons of concrete.
- Gypsum Hills Scenic Drive, Barber County, stunning canyons and bluffs of rock stained red by iron oxide.
- Kansas Cosmosphere and Space Center, Hutchinson, with collections of U.S. and Russian

space artifacts including spacecraft from all three early manned space programs.

• Kansas Underground Salt Museum, Hutchinson, where visitors travel 650 feet below ground to view natural geologic formations and artifacts left by miners over the past century.

• Keeper of the Plains, Wichita, the 44-foot sculpture by artist Blackbear Bosin.

• Lake Scott State Park, Scott County, with craggy canyons, scenic overlooks and historic connections to the El Cuartelejo Pueblo Indian ruins.

• Monument Rocks/Castle Rock, Gove County, also known as the Chalk Pyramids and designated a National Natural Landmark.

• Pawnee Indian Museum State Historic Site, Republic County, once home to as many as 1,500 members of one of the most powerful tribes in the Central Plains.

• St. Fidelis Church, Victoria, built in 1911 and dubbed by William Jennings Bryan "The Cathedral of the Plains."

• St. Mary's Church, St. Benedict, the only known G.F. Satory-painted church to be preserved.

• Tallgrass Prairie National Preserve, Flint Hills, Chase County, known as the last significant example of the tallgrass prairie in North America.

Cheyenne County
Cooperators: Sunny Crest Farms
Planted: September 29, 2007
Harvested: July 7, 2007

Planting Rate: 60 lb/ac
Crop Rotation: Wheat/Fallow

Variety	Yield	Test Weight	Moisture	Protein
Red Wheat				
Post Rock	77.4	60.7	7.9	13.1
Fuller	70.8	57.4	7.9	13.4
Jagger	68.2	56.7	7.7	13.2
Hatcher	66.9	58.3	8.1	12
Smokey Hill	66.9	57.3	7.5	13.8
TAM 112	66.3	57.2	7.6	12.6
Keota	65.6	59.3	8	12.6
Santa Fe	65.3	58.2	7.8	14.1
Millenium	62.8	60.1	8	12.6
T81	62.5	57.6	7.7	12.7
TAM 111	62.0	56.9	7.8	13
Cutter	61.8	58.6	8	12.9
Stanton	61.6	57.8	7.7	12.8
Jagalene	61.4	58.4	7.9	12.8
Wesley	58.1	56.2	7.2	14.1
Red Wheat - Clearfield Wheat*				
Above	61.8	55.6	7.4	12.7
Infinity	57.5	57.2	7.5	13.8
White Wheat				
Danby	61.0	56.5	7.8	13.4
NuHills	57.4	58.7	8.3	13
RonL	55.6	55.8	7.4	13.6
Plot Average	63.5	57.7	7.8	13.1

*Clearfield Wheat can be sprayed, postemergence with Beyond herbicide.

This is useful on fields with grassy weed problems, such as jointed goatgrass.

No-Till Wheat vs. Conventional Tillage Wheat*

Treatments	Yield	Test Weight	Moisture	Protein	Notes
T-81	62.5	57.6	7.7	12.7	Conventional
TAM 111	62.0	56.9	7.8	13	Conventional
TAM 111	57.4	55.8	7.6	13.6	No-till
RonL	56.1	55.9	7.5	13.8	No-till
RonL	55.6	55.8	7.4	13.6	Conventional
T-81	54.1	55.6	7.6	14.2	No-till

* This test was for demonstration purposes. This data is only one site for one year. During the past two years of testing, conventional tillage wheat has out yielded the no-till wheat at this site, regardless of wheat variety. *K-State Wheat Plot Yields*

2007 Cheyenne County Wheat Plot results

Results of Cheyenne County wheat plots harvested in July

The Cheyenne County wheat plot was planted Sept. 27 and harvested July 7, several weeks after the Wheat Plot Field Day on June 20.

Jeanne Falk, K-State multi-county agronomist, reported the top yielding varieties for the K-State county wheat plot were Post Rock and Fuller, with 77 and 71 bushels per acre, respectively. Post Rock is a new AgriPro variety and Fuller is a new release from the K-State wheat breeding program at Manhattan.

Post Rock is resistant to leaf rust, which was present in fields this year. It also has good yield potential. In addition, Fuller has Jagger in its parentage, but is less likely to shatter than Jagger. It is also resistant to leaf rust. The built-in leaf rust resistance helped these two varieties win the plot this year.

To finish out the top five yielding varieties, there was Jagger, Hatcher and Smokey Hill with 68, 67, and 67 bushels per acre, respectively.

Jagger has been a widely grown variety in the past and is still present on a number of acres. Hatcher is a recent release from the Colorado State Breeding program. It has good drought tolerance and good yield potential. It also has some tolerance to stripe rust. Smokey Hill is also a new release from the WestBred breeding program. It also has stripe and some leaf rust resistance. It has high yield potential and good protein content. The plot average for the varieties was 63.5 bushels per

acre.

The test weight ranged from 60.7 to 55.6 pounds per bushel. Lower than 60 pound test weight was likely due to a couple of days with high temperatures and hot, gusty winds. It is hard for flag leaves on wheat that are already stressed from leaf rust to withstand these conditions. Therefore, with the flag leaf severely damaged, the finishing fill on the individual berries was affected. Shriveled berries and lower test weights were the result of this stress.

In the no-till vs conventional tillage plots, there was T-81, TAM 111 and RonL. For each variety, the conventional tillage out yielded that same variety in the no-till system. The nutrient management and planting rate were the same for all plots. According to K-State guidelines, no-till wheat needs an additional 20 pounds of nitrogen to aid in the breakdown of residue and a higher



seeding rate to establish the necessary plant population.

Those who have any questions about these results or wheat varieties for the upcoming year, please contact Ms. Falk. In addition, samples from the plots along with the plot results will be at the fair, Aug. 2-4, for you to take a look at.

Nex-Tech 4x8

TREASURER'S QUARTERLY STATEMENT ENDING July 31, 2007

Published in The St Francis Herald,
St Francis, Ks. and Bird City Times,
Bird City, Ks. Thurs., Aug 9, 2007(33)

FUND	BALANCE
GENERAL	455,638.10
ROAD & BRIDGE	446,732.18
BRIDGE BUILDING	11,694.64
NOXIOUS WEED	18,221.92
NOXIOUS WEED SPECIAL FL	8,731.70
CAFETERIA PLAN	477.82
HOSPITAL BOND & INTERES'	307,209.03
VIN-STATE	35.00
RURAL FIRE	18,962.42
HOSPITAL	58,417.84
DIVERSION FUND	5,415.39
CO ATTNY BAD CHECK FUN	760.15
REG OF DEEDS TECH FUND	35,482.22
RECREATIONAL VEHICLE TA	1,757.95
16/20 M TRUCKS	226.43
SPECIAL PARKS & REC	1,742.78
911	69,820.61
UNCLAIMED FUNDS	2,710.87
AMBULANCE MEMORIAL FUN	7,042.66
INSUFFICIENT CHECK	213.00
ADVANCED TAX-NON BUDGE	3,735.40
SPECIAL AMBULANCE	21,937.00
DRIVERS LICENSE	36.00
SPECIAL FIRE EQUIPMENT	5,036.00
MOTOR VEHICLE TAX	63,436.11
MOTOR VEHICLE FUND	6,815.27
STATE SALES TAX	19,223.17
CURRENT TAX	55,054.49
COUNTY REDEMPTION	1,128.69
DELINQUENT PP TAX	644.48
PAYROLL WITHHOLDING	(1.15)
ATTORNEY FUND	1,839.69
FISH & GAME	98.60
MORTGAGE REGISTRATION	18.17
MAPS	100.00
BENKELMAN TOWNSHIP	620.45
CALHOUN TOWNSHIP	7,122.97
CLEVELAND TOWNSHIP	763.48
JACUA TOWNSHIP	7,307.57
HANDICAP EQUIPMENT	455.00
EQUIPMENT RESERVE FUNG	321,511.20
DELINQUENT 16/20 M TAXES	338.29
CCH/COUNTY HEALTH	5,072.13
PRAIRIE DOG	3,550.58
GIFT ANNUITY	16,911.20
CAPITAL IMPROVEMENT FUN	61,467.30
TOTAL ALL FUNDS	2,055,514.80

COMPARE OUR CD RATES.

Bank issued, FDIC-insured to \$100,000

1-year
Minimum deposit \$5,000
5.05% APY*

3-year
Minimum deposit \$5,000
5.05% APY*

5-year
Minimum deposit \$5,000
5.20% APY*

*Annual Percentage Yield (APY), effective 8/03/07. Certificates of Deposit (CDs) are federally insured up to \$100,000 (principal and interest accrued but not yet paid) per issuing institution. CDs are also federally insured up to \$250,000 (principal and interest accrued but not yet paid) in qualified retirement accounts per issuing institution. Subject to availability and price change. CD values may decline in a rising interest rate environment, and the market value may fluctuate if sold prior to maturity. The amount received from the sale of a CD at current market value may be more than, less than or equal to the amount initially invested. FDIC insurance does not cover losses in market value in these instances. Early withdrawal may not be permitted. Yields quoted are net of all commissions. You pay no additional commissions, annual fees or periodic charges. The estate feature allows heirs to redeem the CDs upon the death of an owner at face value plus interest earned, subject to limitations. CDs require the distribution of interest and do not allow interest to compound. CDs offered through Edward Jones are issued by banks and thrifts nationwide. \$5,000 minimum investment per issuing institution. All CDs sold by Edward Jones are registered with the Depository Trust Corp. (DTC).

Call or stop by today.

Kris Yost
Financial Advisor

114 East 11th
P.O. Box 647
Goodland, KS 67735
Ofc. 785-899-3611
800-755-4596
kris.yost@edwardjones.com

www.edwardjones.com

Edward Jones
MAKING SENSE OF INVESTING