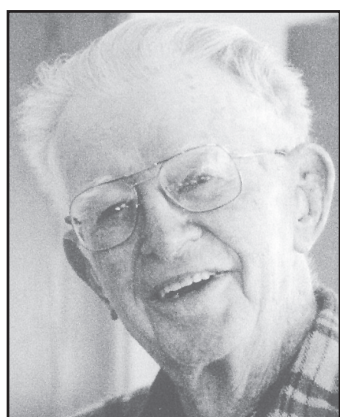


Bulletin Board

Card shower to honor birthday

Lester Confer will be celebrating his 99th birthday on Wednesday, Feb. 13. His family is requesting a card shower to honor him on this day. Address greetings to Lester at 315 Village Rd. #14, St. Francis, KS 67756.



Lester Confer



Norvin Northrup



Open house planned for 80th birthday

An open house is being held to help Norvin James Northrup celebrated his 80th birthday from 10 a.m. to 4 p.m. on Saturday, Feb. 16, at the Harper residence, 305 S. Quincy. He was born on Feb. 19, 1928.

You are welcome to attend the open house and share your memories with him. If you are unable to attend, cards will reach him at 1465 Road 15, St. Francis, KS 67756.

School Menu

Monday 2/4
Breakfast: breakfast combo bar, juice, cereal assortment, milk.
Lunch: chicken fajita, lettuce, tomato, cheese, sour cream, salsa, seasoned rice, pineapple slices, fortune cookie, milk.
Tuesday 2/5
Breakfast: muffins, juice, cereal assortment, milk.
Lunch: spaghetti with meat sauce, green beans, French bread with garlic butter, apricots, milk.
Wednesday 2/6
Breakfast: breakfast taco, juice, cereal assortment, milk.
Lunch: barbecued rib sandwich, smiley fries, hominy, tropi-

cal fruit, Rice Krispie treat, milk.
Thursday 2/7
Breakfast: French toast sticks, maple syrup, juice, cereal assortment, milk.
Lunch: chili and cheese nachos, brad sticks, vegetable blend, sliced peaches, milk.
Friday 2/7
Breakfast: breakfast tornado, toast, juice, cereal assortment, milk.
Lunch: crispy fish fillet, tartar sauce, coleslaw, cornbread, orange, milk.
• Salad bar is offered at noon daily in the junior/senior high school

Card shower
A card shower is being held to help Emma Brunswig celebrate her 75th birthday. Send birthday greetings to her at 31736 Hwy 34, Haigler NE 69030 or call (308) 297-3340

Murder Can Be Habit-Forming
Murder Can Be Habit-Forming, directed by Neala Carmichael and Colleen Gardner and produced by On Stage Inc., is set for March 15 at 4 p.m. and 7 p.m. at the high school auditorium. See related ad.

Alzheimer's/Dementia Support Group
There will be an Alzheimer's/Dementia Support Group meeting at 7:30 p.m. on Monday at the St. Francis Public Library.

Lenten schedule
The schedule for the Wednesday noon Lenten services is as follows: Feb. 13: Peace Lutheran; Feb. 20: St. Francis Catholic Church; Feb. 27: United Methodist Church; March 5: St. Francis Community Church, March 12: First Christian Church; March 19: Good Samaritan Village. A soup luncheon follows the service.

Wildlife banquet
The Cheyenne County Wildlife annual banquet will be held on March 14. More information will be available in the weeks to come.

Music Club
The St. Francis Music Club will hold its next meeting on Tuesday, Feb. 12, at the home of Jean Ann Confer. The meeting begins at 7 p.m. and the program is "A Tribute to Julie Andrews." Program coordinators are Jean Ann Confer and Julie Wolters. Helene Landenberger will give the poetry moment. Hostesses for the evening are Kim Zweygardt, Raedell Winston and Ruth Milliken. A special evening of music and chocolate sampling is planned.

St. Francis Kids Wrestling Club
The St. Francis kids wrestling will be matching up with wrestlers from Atwood kids wrestling during the high school dual to be held here Friday night.

Prairie Land Food
Prairie Land Food signup deadline is Monday, Feb. 11. Pickup will take place from 12:30 to 1 p.m. on Saturday, Feb. 23, at the First

Baptist Church.

Cheyenne County Commissioners
The Cheyenne County Commissioners will meet at 8 a.m. Friday, Feb. 15, in the commissioner's room at the courthouse.

Fair Board
The Cheyenne County Fair Board will meet tonight (Thursday).

Board of Education
The St. Francis Board of Education will meet at 7:30 p.m. on Monday.

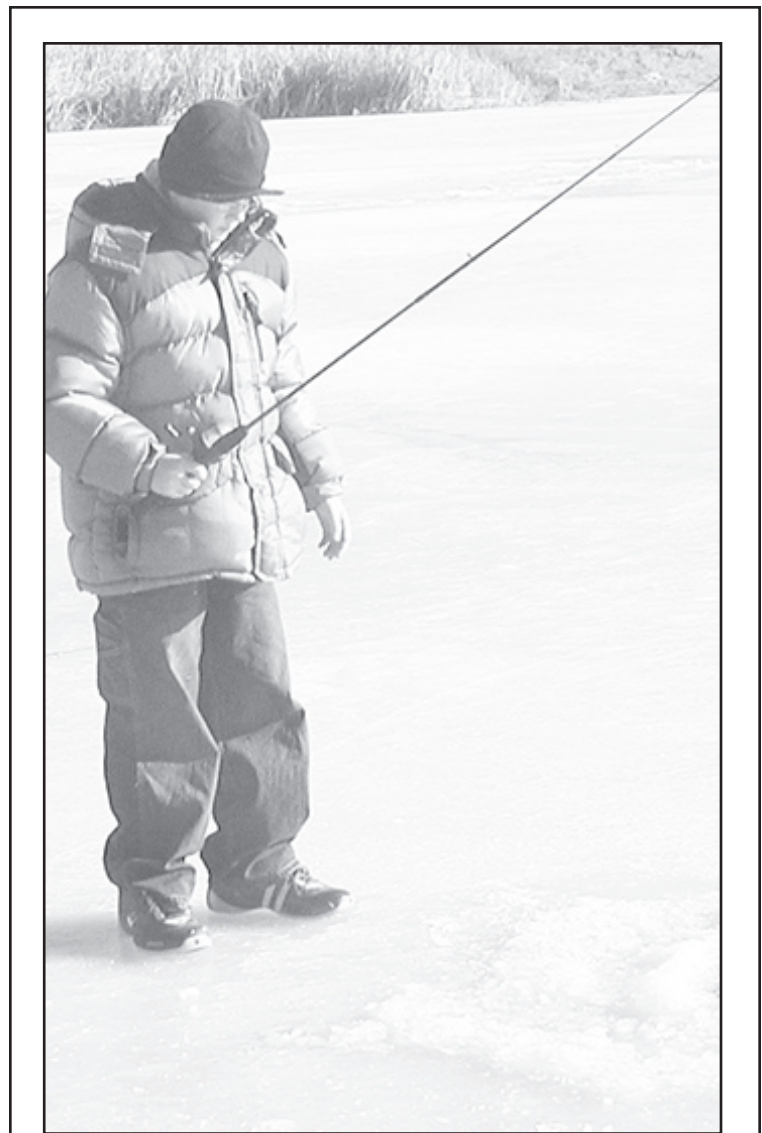
Library Art Gallery
The Kansas 4-H Photography Traveling Exhibit will be on display in the Art Gallery of the St. Francis Public Library until Feb. 15. There is one photo from each of the 105 Kansas counties. The photos were among those shown at the Kansas Fair.

Veterans Affairs
Jody Tubbs, of the Kansas Commission on Veterans' Affairs, will be in St. Francis at 9:30 a.m. today (Thursday) at the county clerk's office. You may also contact the Veteran's Affairs office in Colby any Monday, Wednesday, or Friday at 785-462-3572.

Recovery Today/Narcotics Anonymous
Recovery Today group of Narcotics Anonymous meets at 8 p.m. on Sunday nights at the United Methodist Educational Building. Call (785) 332-6542 or 8607 for more information.

Sainty Serenity Seekers/Alcoholics Anonymous
Sainty Serenity Seekers open meeting of Alcoholics Anonymous is held at 7:30 p.m. each Thursday evening at the United Methodist Educational Building at 104 W. Webster, St. Francis. Call (785) 332-6542 for more information.

Northwest Kansas Family Shelter
Northwest Kansas Family Shelter provides 24-hour-7 day-a-week services to victims of domestic violence and sexual assault. Weekly support groups are available for women and children within the northwest Kansas area. For information or if you are in need of assistance, please call the toll-free number 1-800-794-4624.



JOEY MCCORMICK enjoyed fishing during the ice fishing contest held the end of January.

Herald staff photo by Casey McCormick

2008 Relay for Life to be held in June

The date for the 2008 Cheyenne County Relay For Life has changed from August to June 6. The committee has met several times and will begin making plans as there is less than four months before the event.

The American Cancer Society Relay For Life represents the hope that those who face cancer will be supported; that those lost to cancer will never be forgotten; and that one day, cancer will be eliminated.

Did you know?
More than 5,000 Relay For Life events are planned in 2008 in the United States. Teams of eight to 15 people form a relay and camp out at the local track, stadium park or fairgrounds. In St. Francis, Relay For Life is held at Sawhill Park. People take turns walking, jogging or running around the block.

Relays are overnight events (12 hours) and each team is to have a representative on the track at all times during the relay. Relay for Life is a worldwide movement and takes place in 19 countries outside the United States.

"Make plans to form your team today," said Mrs. Bracelin at 785-332-2757.

Weather

Date	High	Low	Prec.
Jan. 29	36	12	
Jan. 30	31	10	
Jan. 31	38	14	
Feb. 1	49	14	
Feb. 2	44	17	
Feb. 3	51	17	
Feb. 4	36	16	.16

There was 3.5 inches of snow by 8 a.m.

Ron Paul: Defender of Gun Rights

- Ron Paul is the only pro-gun, pro-Constitution Presidential candidate - from either party
- Ron Paul led the fight in Congress to restore the Second Amendment rights to all Americans, without infringement, that have been stripped away
- Ron Paul is 100% pro-gun and 100% pro-freedom

RON PAUL SHARES KANSAS VALUES!

- Support Ron Paul in your local Republican Caucus Saturday, February 9 - Find out how at www.RonPaul2008.com or call 913-963-6858
Paid for by Stephen Shute, Ron Paul Presidential Campaign Committee www.RonPaul2008.com

Happy 75th Birthday
Emma Brunswig
February 10, 2008

Send Birthday Greetings to:
31736 Hwy 34
Haigler, Ne. 69030 or
Call 308-297-3340

FARM LOAN OFFICERS

Farm Service Agency, U.S. Department of Agriculture, seeking applications for two Farm Loan Officers. Applicants must be college graduates, 3.0 GPA. Positions in Goodland and Hugoton, KS. Duties include making, servicing, and supervising agricultural loans. Applications must be submitted separately for each location of interest. Application packets, position description and salary range can be obtained from:

Patty Eckhardt
210 W. 10th
Goodland, KS 67735
(785) 899-3070

Will Schnittker
607-A East 11th
Hugoton, KS 67951
(620) 544-2261

Completed applications must be received at the above locations by the close of business February 21, 2008.
FSA is an Equal Opportunity Employer.

SHOWTIME: 7:30 p.m. 1 hr. 40 min.

I Am Legend
Feb. 8, 9 & 10
Action/Adventure, Science Fiction
Fantasy, Thriller, Adaptation and
Remake
Will Smith, Alice Braga, Dash Mihok, Salli Richardson-Whitfield, Charlie Tahan
Rating: PG-13 for intense sequences of sci-fi action and violence

CHEYENNE THEATER St. Francis, KS
785-332-2747
Children 12 & Under: \$3 All Others: \$5

SALON HOSTS DIAGNOSTIC CLINIC

A Bioelements representative will be conducting skin scans on February 10, 2008 at *The Total Look*.

FREE consultation with reservation ONLY!

Everyone can benefit from the scan no matter how old you are. Everyone ages differently, does your skincare know that? Skin damage knows no age limit! *Don't miss out... call now!*

Total Look
691 E 25th ~ Goodland
785-890-5879

BIOELEMENTS*
PROFESSIONAL SKIN CARE
Used by leading estheticians in professional facials

CHEYENNE COUNTY HOSPITAL 210 W. 1st • St. Francis, KS
785-332-2104

Please remember to visit the Cheyenne County Hospital website at www.cheyennecountyhospital.com.

We have added two new sections to the website which include newborn arrival pictures and the option to pay your bill online. Please check these out on the website.

Land Auction — 160 +/- Acres of Cheyenne County, Kansas
Dryland, Home and Outbuildings
Monday, Feb 11 at 1:30 p.m. CT
Auction Site: Western Auction & Real Estate Auction Pavilion West Highway 36, St. Francis, Kansas

Heirs of Mary Walden, Sellers
Eldon Walden, Executor

Directions to the Property: From Bird City, Kansas - 3 mi. West on Highway 36, then South 7.5 miles on Road 25.

TRACT 1 — The North Half (N 1/2) of the Southwest Quarter (SW 1/4) of Section Four (4), Township Five (5), Range Thirty-Eight (38) in Cheyenne County, Kansas. Acreage currently in wheat stubble.

BASE/YIELD INFORMATION

FSA Acres	Wheat	G.S.	Corn	Sunflowers	2007 TAXES
76.9	40.5/33	9.2/45	---	4.6/1070	\$246.35

TRACT 2 — The South Half (S 1/2) of the Southwest Quarter (SW 1/4) of Section Four (4), Township Five (5), Range Thirty-Eight (38) in Cheyenne County, Kansas. Currently in milo stalks. Boundaries to be determined with findings of a survey, if needed.

BASE/YIELD INFORMATION

FSA Acres	Wheat	G.S.	Corn	Sunflower	Soybean	2007 TAXES
75.5	15.9/35	1.8/89	44.9/116	---	.4/34	\$222.31

TRACT 3 — A tract of land in the South Half (S 1/2) of the Southwest Quarter (SW 1/4) of Section Four (4), Township Five (5), Range Thirty-Eight (38) in Cheyenne County, Kansas.

Known as 610 Road 25, Bird City, Kansas 67731. Approx 4.4 acres, more or less, as estimated by Cheyenne County Assessor. This tract features a nice home with near 2,100 total square, 5 spacious bedrooms with 2 baths, hot water heat system, outbuildings, a 40' x 80' Quonset with a 16' x 16' overhead door, 2-8000 bu. Grain Bins, and another that needs work. Boundaries to be determined with findings of a survey, if needed.

Average Utility Bills: Propane avg. use 126.25 gal./month, Electricity avg. \$67.00/month. 2007 Taxes \$500.98

To view this tract contact Western Auction & Real Estate, LLC to schedule an appointment.

For a complete list of terms for the auction, photos of the property, and to view the auction flyer online, visit our website: www.westernauctionandrealstate.com
Contact us today for any questions you may have or to schedule your auction!

Licensed in Kansas, Colorado, and Nebraska for your Real Estate needs!

Skip Petersen, Sales Agent & Auctioneer ~ 785.332.2368
Jeff Raile, Personal Property Auctioneer ~ 785.332.8951

Robin A. Petersen, Assoc. Broker, Appraiser & Auctioneer ~ 785.332.5586
Brett Petersen, KS Sales Agent & Auctioneer
W. Hwy. 36 ~ P.O. Box 928
St. Francis, Kansas 67756 ~ 785.332.8990
Betty L. Petersen, Broker & Appraiser

Western Auction & Real Estate LLC

Specials of the Week

1999 F250 SC, 4x4, #T4442A	\$7,850
2004 F150 Crew XLT, #T6894	\$11,800
2003 Lincoln LS Sport, #66400	\$16,850
2004 F250 4x4, #T0894A	\$9,975

Just In

- 2005 Expedition 4x4 Limited
- 2004 F250 4x4 XL, diesel, 6M
- 2006 F250 4x4 XL, diesel, 6M

YOST FORD MERCURY
E. Hwy. 36 St. Francis, KS 67756

800-524-9678 Bob - Justin
785-332-2188 Jeff
yostford.com