

Obituaries

Beth Heitschmidt

Nov. 30, 1934 - March 19, 2008
Beth El Heitschmidt, 73, died Wednesday morning, March 19, 2008, at Memorial Hospital of Texas County, Okla.



Heitschmidt

The daughter of Bertha (Zimbelman) and Roy Waters, she was born Nov. 30, 1934, in St. Francis, Kan.

She was united in marriage to Ernie J. Heitschmidt on Nov. 16, 1955, in Denver, Colo. The young couple lived in Kansas City, then Herrington, and made their home in Guymon, Okla., in 1967.

Beth was a beloved wife, mother, grandmother, sister and friend. Her family was so important to her, whether it was family meals or her children or grandchildren's activities. Beth's time spent with her grandchildren which she treasured.

Beth enjoyed her involvement in Victory Memorial United Methodist Church, the Delphinium Garden Club, Meals on Wheels and Texas County Junior Livestock Show.

Always a nature lover, Beth enjoyed gardening and was a bird enthusiast. She enjoyed photography, music, art, needlework, cooking, baking and was an avid reader.

Survivors include her husband, Ernie Heitschmidt of Guymon; two daughters, Teresa and husband, Beny Levin of Fort Worth, Texas; and Lori Heitschmidt of San Antonio, Texas; two sons, Steve Heitschmidt and wife, Rannette of Garden City; and Roy Heitschmidt and wife, Diane of Nazareth, Texas; two sisters, Cathy and husband, Chuck Brunswig of Ft. Collins, Colo.; and Dixie and husband, Bob Keller of St. Francis; brother, Jerry Waters and wife, Janice of Bethesda, Md.; and six Heitschmidt grandchildren, J.D., Alyssa, Eric, Emily, Ryan and Brett.

She was preceded in death by her parents, Bertha and Roy Waters and a sister, Dona Sherlock.

Memorial services were conducted on Monday, March 24 at Victory Memorial United Methodist Church with Rev. Michael Burkett and Rev. Barry Bennett, officiating.

The family has suggested that memorial gifts in honor of Beth may be given to Panhandle Nutrition (Meals on Wheels), GHS Band Boosters or Victory Memorial United Methodist Church, c/o Henson-Novak Funeral Directors, P.O. Box 1306, Guymon, OK 73942.

Arlene (Richers) Bruder

April 9, 1920 - March 15, 2008
Arlene Bruder, 87, of Bird City, Kan., died at her daughter's home on March 15, 2008, of complications from pneumonia.

Arlene was born in 1920 in St. Francis, daughter of Henry John Richers and Christina (Walz) Richers. Arlene moved to Denver, Colo., when she was a teenager and eventually spent most of her working career at Martin Marietta.

She is survived by husband, Don Bruder of Bird City; daughter, Charlene Dellinger of Denver; sister, Elvera Neitzel of Bird City; sister, Viola Wright of Brush, Colo.; brother, Elmer Richers of Denver; and numerous nieces and nephews living in Kansas, Colorado, Wyoming, Nebraska, Oklahoma and Texas.

Arlene was preceded in death by daughter, Sharon Bonebrake; brothers, Herman Richers and Albert Richers; and sisters, Adele Locke and Norma Pizel.

Arlene and Don relocated to Bird City many years ago where they became members of St. John Lutheran Church. Arlene remained active doing volunteer work in Bird City and several surrounding communities.

Funeral services were held Tuesday, March 25, at St. John Lutheran Church in Bird City.

Memorials may be made to St. John Lutheran Church or a charity of your choice.

Rudolph "Rudy" Willt

Feb. 14, 1918 - March 19, 2008
Rudy Willt died on March 19, 2008, at Kansas Christian Home, Newton, Kan., at the age of 90. Memorial services were Tuesday, March 25, at Peace Lutheran Church, St. Francis.

Rudy was born Feb. 14, 1918, near St. Francis to Christian and Magdalena Willt.

Rudy entered the US Army in 1941 and served with the Ninth Service Command in Turlock, Calif. During this time of service, Rudy married Ruby Nadine Tagtmeyer, of Goodland on April 28, 1942, in Walla Walla, Wash.

Upon returning at the end of World War II, Rudy and Nadine acquired the Willt family farm 2 miles south of Wheeler, where they farmed and raised their family. They moved to a home in St. Francis in the summer of 1976. Rudy continued farming until 1995 and retired at the age of 77. Of all the farming tasks, Rudy enjoyed the livestock most.

Nadine died in 1991. On Oct. 7, 1995, Rudy married Anna Makings of Goodland, who is deceased.

Rudy was a member of Zion Lutheran Church and later Peace Lutheran Church, both of St. Francis.

Rudy was a caring father and greatly loved by his children and grandchildren.

Survivors are his children, Connie Asbury and husband, Chuck, Roger Willt and wife, Sheri, Randy Willt and wife, Linda; his grandchildren, Mark Reedy, Erin Reedy, Benjamin Willt and wife, Denise, Amy Downey and husband, Ben, Jenna Willt, Brian Asbury and wife, Katie; and his great-grandchildren, Ava, Abigail and Grace.

Pallbearers were Mark Reedy, Benjamin Willt, Brian Asbury, Kenneth Willt, Terry Tagtmeyer and Eddie Dankenbring.

The family suggests memorial contributions to Peace Lutheran Church, St. Francis, or Kansas Christian Home, 1035 SE 3rd Street, Newton, KS 67114.

Charles "Dean" Krien

July 6, 1925 - March 5, 2008
Charles "Dean" Krien was born July 6, 1925, to Louie and Anna Krien, on the family farm located northwest of St. Francis, in Cheyenne County, Kan. He died on March 5, 2008, at the age of 82 in the North Colorado Medical Center in Greeley, Colo.

He was baptized as a young adult in Goodland. He attended school up to the eighth grade in rural Cheyenne County, until, as an only son, he was needed on the farm.

At a town gathering in Haigler, Neb., he met his future wife, Deloris (Zuege) Krien. Dean and Deloris were married on May 20, 1950, at the Cheyenne County Courthouse in St. Francis.

Following their marriage, they took up residence on Dean's family farm in southwest Cheyenne County. They were blessed with two sons, Danny and Stan. They raised their family on the farm.

In 1989, they bought a house in St. Francis and moved in. It took Dean some time to adapt to the town living, but he learned to appreciate it. He did, however, make his occasional trips to the farm.

Though Dean was a man of few words, he did love his children, grandchildren, and great-grandchildren. He enjoyed listening to music, and visiting with friends and family.

Farming was his passion. He loved the country, his farm, and spending time there. Although he preferred to stay close to home, he did travel to Oklahoma and Colorado.

In 1976, with some friends, Dean made it to Minnesota, for his son, Stan's wedding.

Dean and Deloris celebrated their 50th wedding anniversary in 2000, with many cards and well wishers.

Dean is survived by is two sons, Danny of Greeley, Colo., Stan (Becky) of St. Francis; three grandchildren, Vincia (Chris) Haugsness of Topeka, Jana Krien and her fiancé, Matt Traxler of Topeka and Braden of Greeley; two great-grandchildren, Zoey and Cadec; and nieces and nephews.

Dean is preceded in death by his wife, Deloris Krien; parents, Louie and Anna Krien, and an infant sister and brother.

Funeral services were held on March 10 at the Peace Lutheran Church in St. Francis with Pastor Ken Hart officiating.

Honorary pallbearers were Ferdinand Krien, Norvin Anderson, Norris Anderson, Fred Stasser and Charles Workman.

Casket bearers were Vance White, Kenny Richers, Michael Hanson, Steve Workman, Dan Workman and David Wright.

Interment was in the St. Francis Cemetery, St. Francis.



ARTWORK DISPLAY — Lavon Schlittenhardt and Pat Leibbrandt look at the photograph display by Howard Freedman at the library.

Photography is on display

Howard Freedman, Lawrence, is the artist in residence at the St. Francis Public Library. He has a display of digital photography.

He said he has been interested in photography ever since getting his first camera that he won as a pre-teen. At one point in his life, he said he about lived in the darkroom.

"Now, thanks to the wonder-

ful world of digital, the smell of developer and fixer are a thing of the past and I can usually be found in front of the computer," he said.

All of the images in the collection at the library were created digitally within the last few years. Some are "straight" shots, that is, as shot in the camera with little manipulation. Others are

composites, mixing elements from different shots into a single final image.

"In either case, I try to look at the world a little differently, giving a view with a slightly different perspective from what first meets the eye," he said.

Virginia Cooper urges people to stop by the library and enjoy the display.

University to honor students

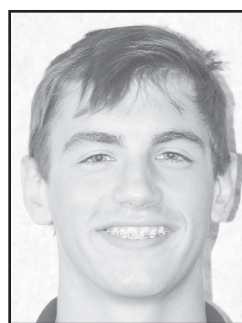
Holly Keller and Gavin Smull of St. Francis Community High School and Kaedra Dixson of Cheylin High School are among 51 seniors from 15 Kansas high schools who will be honored on April 2 by the University of Kansas Alumni Association and Kansas University Endowment.

The seniors will be recognized for their academic achievements and named Kansas Honor Scholars at a dinner program at the Northwest Kansas Educational Service Center in Oakley.

The honors program began in 1971 and has honored more than 100,000 students. Scholars rank in the top 10 percent of their high school senior class and are selected regardless of curricula, majors, oc-



Keller



Smull



Dixson

cupational plans or higher-education goals.

During the ceremony, each student will receive an American Heritage Dictionary in hard back and CD versions.

David Johnson, director of marketing and Internet services for the alumni association, will speak to

the students and their parents and guests.

Mike and Brenda Day of St. Francis are county coordinators for Cheyenne County.

The Kansas Honors Program is made possible through KU Endowments and proceeds from the Jayhawk license plate program.

Farm Machinery Consignment Auction

Saturday, April 5, 2008 - 10:30 am CT

Western Auction & Real Estate Auction Pavilion,

W HWY 36, St. Francis, KS

Tractors-Trucks-Combines-Livestock Equip-Implements-SNAP ON Tools

Visit our website for a complete Listing and Photos!

westernauctionandrealestate.com

1998 JD 9610 Maximizer Combine, Green Star, 2385 sep. hrs, 3237 eng. hrs., SN H09610X679254 w/ 19980 930 JD Header, 30' SN H00930R677471; 1996 Ford 9030 Bi-Directional w/ 7414 Loader, Front & Rear PTO, 3 pnt., 5600 hrs, 500 hrs on major over haul, SN 202248; 930 JD Platform; 925 JD Flex Head, all Poly; 1994 Freightliner w/ Detroit Diesel motor, Series 60-12T motor w/ 442,486 mi. w/ Eaton Fuller, 9 spd trans w/ sleeper, 186" wheel Base 285/75R 24.5 tires; John Deere AR Tractor, SN 283046, 14.9-26 tires; John Deere Tractor front weights for 4630; 1973 Chevy Truck w/ 350 motor, 5 spd/2 spd trans w/ 16" box & Double Ram Hoist, Steel Sides, Wooden Floor, 8.25-20 front tires, 9.20 rear tires; 1972 C60 Chevy Truck w/ 65,792 mi, 366 motor, 4 spd/2 spd trans., Double Ram Hoist, 9.00-20 tires, 16" Giant Box w/ wooden sides; 9N Ford Tractor w/ Loader; M2 Allis Chalmers Combine w/ 22' header, diesel, cab, air; 1983 Gleaner N7, Series Three Rotary Combine, Model 324 w/ 24' Header, 30.5L-32 front, 11.25-24 Back Tires, 1680 eng. hrs, AC hyd. Stat, SN K03605H83, went through service program; 1980 Gleaner N6, Rotary w/ 24' header, 24.5-32 front tires, 11.25-24 back tires, 2905 hrs., hyd. stat drive, cab, AC, SN G02260H; Ditch Witch Diesel Trencher & Back Hoe, w/ 3440 hrs, Model 5010, SN 6E1229; H & H Flat Bed Trailer, tandem axle, 16'x82"; 7300 8 Row John Deere Planter, 30" w/ Vacuum Meter, Insecticide Boxes w/ Markers, SN A07300A100656; 48' Flex King Rod Weeder, rebuilt; 40' Flex King Rod Weeder; 36" 6" Grain Auger w/ 10 hp B&S motor; Speed King 80, 8" PTO, Grain Auger, 60"; Krause 18' Offset Tandem Disc, model 1499, SN 1579; Dual 600 Manure Spreader, tandem axle, w/ 12.5-16 tires, 14'x6' box w/ new drag chain, 1000 PTO, SN 1525; (4) John Deere LZ Hoe Drills, 8', 12" spacing, steel press wheels, manual transports, lever lift w/ hitch & marker, always shedded; Land Pride 15' Bat Wing Mower, rebuilt, SN 306625; Land Pride 15' Bat Wing Mower; Ford 951B 5' 3 pnt Rotary Mower, 540 PTO, SN A1D0222; Ford 300 6 cylinder Irrigation motor on natural gas; 190 joint 8" Irrigation Pipe w/ 30" Gates; 8" Irrigation Fittings, T's, elbows, plugs; 30 Joints of 12" Airation Tubes; 200 gal Poly Tank & Cradle; 500 gal. Diesel Tank; 20 Hole Squeeze Pump; 1987 Donahue 7'x24' Gooseneck Trailer, Wood Floor w/ Rubber Mats; New Holland 355 Grinder Mixer, 100 bu. cap, w/ hyd. fill auger w/ extra long unloading auger & extra long screens w/ 540 TO, Model 355, SN 631056; Innovations 3 pnt. Feedlot Sprayer w/ 55 gal. tank, 540 PTO, 2 yrs. Old; EZ Roll II Wire Roller, Model C425 w/ 5.5 Briggs & Stratton Motor, SN 10247; (4) 9" Stock Tanks; (25) Big T Steel Posts; Wind Power, 25,000 watt PTO Generator w/ 540 PTO, 120/240 volts on Wheel Trailer w/ Lincoln 225 amp Welder; Turner Machine Co Metal Lathe w/ 8" Swing, 6' bed w/ 3 hp Dayton Elec. Motor, 220v; Lots of Snap on Tools and 12 Drawer Snap On Tool Box; Lots of Misc. Shop Tools and Power Tools

Visit our website for terms of the auction and more listings!!

Licensed in Kansas, Colorado, and Nebraska for your Real Estate needs!

Skip Petersen, Sales Agent & Auctioneer - 785.332.2368
Jeff Ralle, Personal Property Auctioneer - 785.332.8951
Robin A. Petersen, Assoc. Broker,
Appraiser & Auctioneer - 785.332.5586
Brett Petersen, KS Sales Agent & Auctioneer
W. Hwy. 36 ~ P.O. Box 928
St. Francis, Kansas 67756 ~ 785.332.8990
Betty L. Petersen, Broker & Appraiser

COMPARE OUR CD RATES.

Bank issued, FDIC-insured to \$100,000

1-year	Minimum deposit \$5,000	3.40% APY*
3-year	Minimum deposit \$5,000	3.75% APY*
5-year	Minimum deposit \$5,000	4.20% APY*

*Annual Percentage Yield (APY), effective 3/20/08. Certificates of Deposit (CDs) are federally insured up to \$100,000 (principal and interest accrued but not yet paid) per issuing institution. CDs are also federally insured up to \$250,000 (principal and interest accrued but not yet paid) in qualified retirement accounts per issuing institution. Subject to availability and price change. CD values may decline in a rising interest rate environment, and the market value may fluctuate if sold prior to maturity. The amount received from the sale of a CD at current market value may be more than, less than or equal to the amount initially invested. FDIC insurance does not cover losses in market value in these instances. Early withdrawal may not be permitted. Yields quoted are net of all commissions. You pay no additional commissions, annual fees or periodic charges. The estate feature allows heirs to redeem the CDs upon the death of an owner at face value plus interest earned, subject to limitations. CDs require the distribution of interest and do not allow interest to compound. CDs offered through Edward Jones are issued by banks and thrifts nationwide. \$5,000 minimum investment per issuing institution. All CDs sold by Edward Jones are registered with the Depository Trust Corp. (DTC).

Call or stop by today.

Kris Yost
Financial Advisor
114 East 11th
P.O. Box 647
Goodland, KS 67735
Ofc. 785-899-3611
800-755-4596
kris.yost@edwardjones.com
www.edwardjones.com

Edward Jones

MAKING SENSE OF INVESTING

Gun & Coin Show!

April 5th & 6th, 2008

Sponsored by: Hide-Away at Cameron Lane, Inc.
(A non-profit organization providing services for developmentally disabled children)

Burlington Community Center
340 S 14th Street
Burlington, CO 80807
Sat: 9:00am - 5:00pm, Sun: 9:00am - 4:00pm

Public Welcome! Lunch Available!

\$5.00 Admission (Good for both days!)
12 & under free but must be accompanied by an adult.

80 Tables ~ \$25.00 each

All guns to be checked & secured at the door

For more information, please contact
John Hansen 719-346-7623

BUY ~ SELL ~ TRADE

Non-surgical treatment of hemorrhoids.

John D. Ferris, MD will be at:
291 15th Street
Burlington, CO

Thursday, April 2 & Saturday, April 5

For information or appointment, call 1-800-593-0009

Hem cure

This is Bull!

Sat., March 29, 2008
1:00 CST
Oakley Livestock
Oakley, Kansas

This bull ADKL Juan 059K was bred in our program and

Moser Limousin Annual Bull Sale

Using the "proof of the past" for the "progress of the future".

42 BULLS
(24) LIMI & (18) LIMI-FLEX BULLS
(37) 2 YR. OLDS, (5) YEARLINGS
95% Black - 90% Polled
Many Homozygous Black

Dan & Kristy Moser & family
Winona, Kansas

For questions or to request a catalog
PHONE: 785-846-7888
FAX: 785-846-7874
e-mail: eatmebeef@st-tel.net

38 YEARS OF "MEATING" THE NEEDS OF THE COMMERCIAL AND PUREBRED PRODUCER.

Sale Day Phone
785-672-4100

Registered Nurse

Logan County Manor is offering a \$2,500 sign on bonus for a full-time Registered Nurse to work 6:00 am to 6:00 pm. The successful candidate will be able to demonstrate compassion, a positive attitude, and a commitment of a team oriented working environment. LCM offers competitive wages including weekend differential. An excellent benefit package awaits the successful candidate. Benefits include: Health Insurance, Life Insurance, KPERs, PTO, optional Dental Insurance, AFLAC plans, Flexible Spending Accounts, and Deferred Comp plan. Applications may be picked up at Logan County Hospital, Logan County Manor or obtained on our website at www.logancountyhospital.org and returned to: Logan County Hospital, Attn: Human Resources, 211 Cherry Avenue, Oakley, KS 67748 or you may contact Sandy Koerperich, DON @ 785-672-8109, Ext. 315. Logan County Manor is an Equal Opportunity Employer.