



Maifeld and Sisler

## Wedding set for Oct. 18

Bryce James Maifeld of Greeley, Colo., and Melanie Elizabeth Sisler of Sidney, Neb., will be united in marriage on Oct. 18 at the Evangelical Free Church of Easton in Eaton, Colo.

Bryce is the son of Ron and Beth Maifeld of St. Francis and Melanie is the daughter of Gary and Paula Sisler of Eaton.

The bride-elect is a 2000 graduate of Eaton High School. She earned her bachelor of science degree from Southwest Baptist University in Bolivar, Mo., and graduated from the University of Nebraska-Lincoln in 2006, with a master of science degree in statistics. She is currently employed by Cabela's Inc., as a marketing statistician.

Melanie is the granddaughter of Gerald and Phyllis Stucky of Pretty Prairie, Lola Sisler of Trenton, Mo., and the late Wayne Sisler.

The bridegroom-elect graduated in 2000 from Eaton High School and attended Aims Community College, Greeley, in the aviation program. He is currently working for T.R. Robel Services, Inc., as a foreman in Greeley.

Bryce is the grandson of Harleen Waldorf of Vinton, Iowa, and the late Cable Waldorf and the late Ken and Arlene Maifeld.

## Couple planning wedding on Nov. 8

Tara White and Riley Adams are planning a Nov. 8 wedding in Hays.

Parents of the couple are Greg and Denise White, Lewis, and Rocky and Joyce Adams, Quinter.

Grandparents of the bride-elect are the late Gene and Shirley Pinalto and the late Bill and Jackie White.

Grandparents of the bridegroom-elect are Esther Ruder of Hays and the late Edwin Ruder, and Don Patterson of Quinter and the late Yvette Patterson.

The bride-elect is a 2001 graduate of Lewis High School. She received her bachelor of science degree in physics from Fort Hays State University in 2005, and is currently pursuing her doctor of philosophy in biomedical engineering at Oregon Health and Science University in Portland, Ore.

The groom-elect is a 2000



Adams and White

graduate of Quinter High School. He received his associate degree from North Central Kansas Technical College in Beloit in 2001, and is currently employed by Ace Plumbing in Sandy, Ore.

## Marriage announced by couple

Gabriel Weeden and Kristina Martin are planning a Nov. 8 wedding at St. Joseph Catholic Church in Olpe.

Parents of the couple are Dennis and Sonja Weeden of St. Francis and Roland and Rosemary Martin of Olpe.

Gabriel is a 2002 graduate of St. Francis Community High School. He attended Kansas State University where he received his bachelor's degree in agricultural economics in 2006 and his master's degree in 2008. Gabriel will be working as an agricultural economist for the south-central region of the Kansas Farm Management Association in Hutchinson.

Kristina is a 2003 graduate of Olpe High School and a 2008



Martin and Weeden

graduate of Kansas State University, with degrees in agribusiness and accounting. She is currently working for Kennedy and Coe Public Accountants in Pratt.

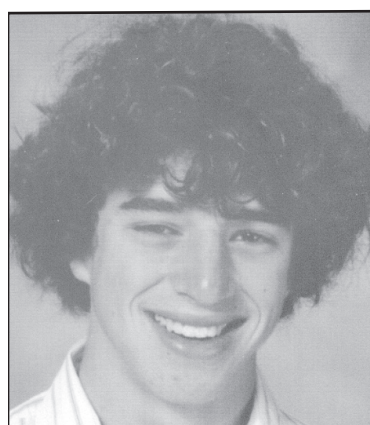
The couple plan to marry Nov. 8 at St. Joseph Catholic Church in Olpe.

## St. Francis News

On Wednesday, Sept. 17, Betty Jean Winston traveled to Overland Park to visit Shawn and Leigh Legere and Miles.

The highlight of the visit was attending the Shawnee Heights Cross Country Meet in Topeka on Saturday. Miles runs on the Blue Valley West varsity team. It was a

beautiful fall day. Another highlight was on Sunday, when Betty Jean was returning to St. Francis. She took a side trip to Manhattan to have brunch with her grandson, Chase Legere and Lauren Ryan, who are both attending K-State.



Legere

## Student elected to royalty

Miles Legere, Overland Park, was elected the 2008 sophomore Homecoming Prince for Blue Valley West High School.

Miles is a member of the varsity cross country team and Fellowship of Christian Athletes. He also participates in track.

Miles is the son of Shawn and Leigh Legere, and the grandson of Betty Jean Winston, St. Francis, and Scotty and Libby Legere, Hays.

## Club Clip

The Plum Creek 4-H Club met on Sunday, Dec. 10. The members had a hayrack ride, during which they caroled at the Good Samaritan Village, the Cheyenne County Hospital and homes in the community. The members then had a gift exchange at Matt and Mila Bandel's home. This was followed by a hot dog roast and s'mores.

Mikaela Grace, reporter



**Need a change of scenery? Northeastern Colorado may be the place for you!**

Large Ag dealer in Northeast Colorado is looking for qualified candidates for the following positions:

- Experienced technician in Fort Morgan and Sterling, Colorado
- Farm Equipment sales in Sterling, CO

We offer a generous benefits package and excellent opportunities.

Contact Howard at 970-867-5669 Ext. 404 or e-mail howard@wickhamtractor.com

**WICKHAM TRACTOR COMPANY**

<b>Fort Morgan</b> 15447 Hwy. 34 970-867-5669	<b>Sterling</b> 18875 Rd. 24 970-521-9999
---	---

**YOU ARE INVITED!**

**Branson in Christmas!**  
December 4-9, 2008

*Yakov, Joe Diffie, Noah, The Presleys, Showboat Branson Belle, Doug Gabriel, Shoji Tabuchi & More!*

Package includes deluxe motel accommodations at the luxurious Radisson in Branson. Baggage handling, 11 delicious meals, Motorcoach transportation and fully escorted.

**\$985 per person double occupancy; \$1,250 single**

November tour sold out...  
December tour is selling fast!

Call toll free for reservations or more information.  
**(866) 277-0679**

Lazy K Coach Co.,  
Burlington, Colorado

## Local leader makes trek to Capitol, lobbies farm issues

Cheyenne County Farm Bureau member and county coordinator, Alisa Rath has completed a multi-state 2008 Farm Bureau Leadership Experience program.

The culmination of the program included a visit to Washington, D.C., on Sept. 8 through 11 where Mrs. Rath met with Kansas Congressional delegation members Sen. Sam Brownback, Rep. Jerry Moran, Sen. Pat Roberts and Rep. Nancy Boyda. Discussions centered on issues with implementation of the farm bill, encouraging movement on various free trade agreements, and movement on a comprehensive domestic energy policy. After meeting with the leaders, the Kansas constituents were treated to a private tour of the West Wing, including the Oval Office and the White House Press Room.

The program also included an intensive five-day session based in West Des Moines,

Iowa, covering controversial issues like animal welfare, building bridges with consumers, and developing and delivering a positive message for agriculture. Two days were also spent in Manhattan in conjunction with the Kansas Farm Bureau Resolutions Committee.

"This was an incredibly rewarding experience for me on many different levels. Most important, however, was the opportunity to meet with our local elected officials in Washington and talk with them first-hand about issues facing the farmers and ranchers in my community," she said.

"As rural areas continue to depopulate and animal welfare groups take direct aim at our livelihood, we need a voice on Capitol Hill. Farm Bureau serves to remind politicians that we are still out here, working hard each day to provide food for our nation."

"We are well represented in Washington and programs like the Leadership Experience will



Rath

ensure that we continue with that effort."

The Leadership Experience is for emerging county Farm Bureau leaders with the potential for providing exceptional leadership in their county and state. Participants are nominated and five individuals are selected from each state. Other states participating included Iowa, Minnesota, New Mexico, South Dakota and Utah.

## Farm safety awareness comes to the forefront

This is National Farm Safety and Health Week. Safe Kids Kansas is encouraging parents to focus on injury prevention throughout the week and the year.

Children living in rural areas are at greater risk of unintentional injury-related death than children living in urban areas. Each year in the United States, approximately 70 children ages 14 and under die from injuries occurring on a farm. In 2001, there were an estimated 22,648 injuries to youth under the age of 20 on a farm. In Kansas, approximately 155,000 children (28 percent) live in rural areas.

Nearly two-thirds of all injuries occurring on a farm happen when the child is not actively working. The environment on a farm allows a child to be exposed to hazards such as heavy tractors, harmful chemicals, complex machinery, pesticides and large animals.

"Kids need to be supervised

while doing farm work, and kids should not try to do the work of an adult," says Jan Stegelman, Safe Kids Kansas coordinator. "It takes physical strength and development, as well as mature judgment, to operate mechanical farm equipment safely."

Machinery, motor vehicles and drowning account for more than half of all farm-related child fatalities. Safe Kids Kansas recommends that children under 16 never drive or ride ATVs, snowmobiles or tractors, and nobody should ride as a passenger on a tractor, mower or minibike.

Children should also be supervised near irrigation ditches, ponds and other bodies of water, no matter how shallow.

"A small child can drown in just an inch of water," she said. "Drowning happens quickly and silently, not like in the movies. A drowning child cannot cry or call for help."

The drowning death rate for all age groups is three times as high in rural areas as in urban areas.

Motor vehicle crashes are the number one killer of children ages 4 to 16 and the number one cause of fatal accidental injury in children 14 and under. Almost half of all fatal crashes occur in rural areas.

"Never, ever let a child ride in the bed of a pickup truck," Ms. Stegelman said. "In a crash, the child would almost certainly be ejected and killed or suffer a permanent, life-changing injury."

It is against Kansas law to carry passengers in a truck bed.

Safe Kids Kansas also recommends these precautions:

- Make safe play areas on the farm, physically separated from animals, farm equipment and bodies of water.
- Make sure children wear personal flotation devices while on or near water.

**Check it out!**

**Kids** — You take care of the grades —  
and we'll take care of the memories!

**REPORT CARD**  
**A+**

**BOOSTER SPONSOR**

Your name or business will be acknowledged everytime we run a Booster Ad, and by being a Booster Sponsor you will be helping to promote school activities & feature team photos throughout the school year!

**4-H Insert**

To be inserted in October.

This insert features a collection of articles celebrating 4-H Week and the 4-H Clubs in Cheyenne County.

Prepare yourself for one of the most thorough Inserts containing information on hunting. Coming also in October!

To participate in an upcoming promotion or for more details contact Casey at the:

**Bird City Times**  
**The Saint Francis Herald** • 785-332-3162