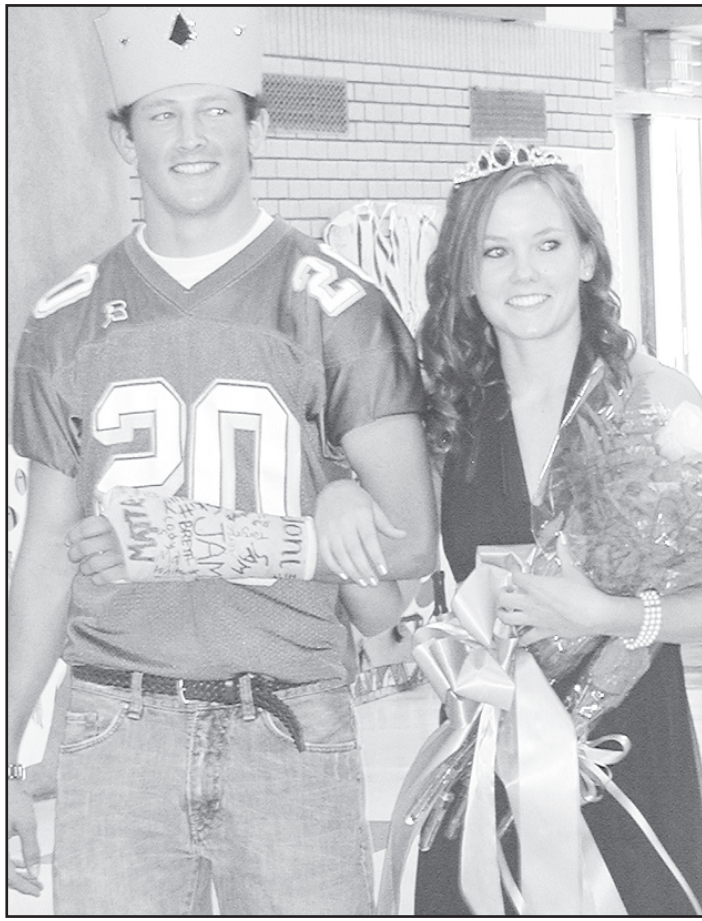


Bulletin Board



The Homecoming King and Queen were Trent Kinen and Jami Pevler.
Photo by Lezlie McCormick

St. Francis News

Mr. and Mrs. Gordon Jenkins of Chesterfield, Va., were Sunday evening to Thursday visitors of her parents, Donna and Norvin Northrup and her sister, Debra and George Harper.

Thursday to Monday guests of LaVera were Jim and Elaine Wiseman and Carol of Fremont, Neb. Larry Beringer of Sharon Springs visited on Friday.

LaVera Beringer's visitors the past two weeks include Sylvia Queen, Gertie Zweygardt, Pastor Chris and Marcine Farmer and Dorothy Orth.

Jim Worley of Jamestown, N.D., was a dinner guest of Milton and Betty Lampe at Parkhill on Wednesday, Sept. 24. He and his son, Josh Worley, stopped to visit on Saturday before returning home.

School Menu

- Monday 26**
Breakfast: French toast sticks, maple syrup, juice, cereal assortment, milk.
Lunch: chicken club sandwich, bacon, lettuce, tomato, potato wedges, sliced peaches, frosted cake, milk.
- Tuesday 27**
Breakfast: frosted donut, juice, cereal assortment, milk.
Lunch: chili, crackers, carrots and celery, cinnamon rolls, orange, milk.
- Wednesday 28**
Breakfast: breakfast casserole, toast, juice, cereal assortment, milk.
Lunch: chicken stir-fry with vegetables, seasoned rice, hot rolls, sliced pineapple, fortune cookie, milk.
- Thursday 29**
Breakfast: pancake and sausage on a stick, syrup, juice, cereal assortment, milk.
Lunch: ham and cheese stromboli with Italian sauce, tossed salad, green beans, sliced pears, milk.
- Friday 30**
Breakfast: breakfast taco, salsa, juice, cereal assortment, milk.
Lunch: goulash, French bread with garlic butter, corn, strawberries and bananas, milk.
•Salad bar is offered at noon daily in the junior/senior high school

85th birthday
Mildred Burr is celebrating her 85th birthday on Oct. 9. Please send cards to her at 104 E 1st Street. St. Francis, KS 67756.

60th anniversary
Junior and Jerry Cress will be celebrating their 60th wedding anniversary on Oct. 3. Help them celebrate by sending a card to P.O. Box 176, Bird City, KS 67731.

Prayer Walk for Life
On Sunday, two groups of Prayer Walkers for Life will walk to each church in Bird City and St. Francis. At 2 p.m. they will begin at the Peace Lutheran Church in St. Francis and at 2:45 p.m. at the St. John Lutheran Church in Bird City. Both groups will meet at the Wesleyan Community Church in Bird City at 4 p.m. for a time of fellowship and a brief meeting. For more details read the story in *The Herald* and *Times* or call (785) 734-2703 in Bird City or (785) 332-2950 in St. Francis.

Cheyenne County Historical
The Cheyenne County Historical Society will hold its regular business meeting at 5 p.m. on Tuesday, Oct. 14 at the museum.

Mother's Group
The Mother's Group Meeting will be held at 9 a.m. Tuesday, Oct. 14, at the Peace Lutheran Church. You are welcome to join in the morning's activity of decorating pumpkins.

Hospital Guild
The Cheyenne County Hospital Guild October meeting will take place at 2 p.m. on Monday, Oct. 6. Carol Gamblin will be giving a talk on the "911 Program." Hostesses are Anita Miller and Betty Loudon.

City Council
The St. Francis City Council will meet at 7:30 p.m. on Tuesday at the city hall building.

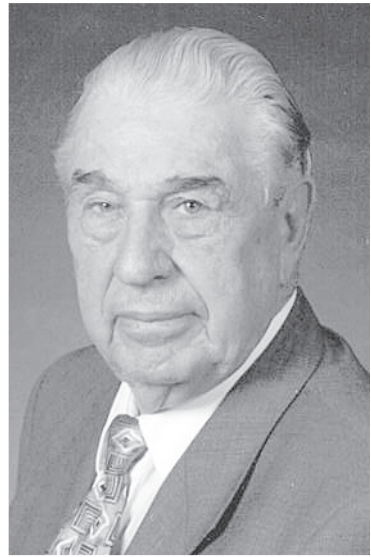
Board of Education
The St. Francis Board of Education will meet on Thursday, Oct. 9.

Fair Board
The Cheyenne County Fair Board will meet tonight (Thursday).

Volleyball/football
The high school girls volleyball teams will meet Idalia and Wray in volleyball action today (Thursday) at the high school gym. The Oberlin varsity/junior varsity volleyball tournament will take place in Oberlin on Saturday.

The Indian football team will travel to Norton on Friday.

Koshare Indian Dancers perform
The Koshare Indian Dancers



Charles Petitjean

Card shower requested

The family of Charles R. Petitjean (Chuck) is hosting a card shower in honor of his 80th birthday. Birthday wishes can be sent to Chuck at: 711 E. Jackson Street, St. Francis, KS 67756

from LaJunta, Colo., will perform in Oberlin on Saturday. They will be dancing in the Mini Sapa parade, again at the museum in short performances and then at 7:30 p.m. at the Gateway. For information, call (785) 475-3557 or (785) 470-0218.

Veterans Affairs
Jody Tubbs, of the Kansas Commission on Veterans' Affairs, will be in St. Francis at 9:30 a.m. today (Thursday), at the county clerk's office. People may also contact the Veteran's Affairs office in Colby any Monday, Wednesday, or Friday at 785-462-3572.

Recovery Today/ Narcotics Anonymous
Recovery Today group of Narcotics Anonymous meets at 8 p.m. on Sunday nights at the United Methodist Educational Building. Call (785) 332-6542

or 8607 for more information.
Sainty Serenity Seekers/ Alcoholics Anonymous
Sainty Serenity Seekers open meeting of Alcoholics Anonymous is held at 7:30 p.m. each Thursday evening at the United Methodist Education Building at 104 W. Webster, St. Francis. Call (785) 332-6542 for more information

Northwest Kansas Family Shelter

Northwest Kansas Family Shelter provides 24-hour-7 day-a-week services to victims of domestic violence and sexual assault. Weekly support groups are available for women and children within the northwest Kansas area. For information or in need of assistance, please call the toll-free number 1-800-794-4624.

Club Clip

Lawn Ridge 4-H Club
On Sunday, Sept. 28, the members of the Lawn Ridge 4-H Club walked down the red carpet to the 2007-08 Club Achievement Banquet. While the awards ceremony was going on, everyone enjoyed Pepsi floats. After the awards banquet, the meeting was called to order and the minutes were read.

Leader Penny Archibald reported that record books would not be due until the 6th, special awards needed to be written up by the 1st still, and 4-H Week is Oct. 5 to 11.

The 4-H Council Representative Miriam Yonkey reported that Cindy Burr will be doing the Officer Training and the 4-H Banquet will be in Bird City this year.

There was no old business. Under new business, the club moved to help with the Support Our Soldiers (S.O.S.) this year. The club will also attend the United Methodist Church on 4-H

Sunday and after, the Junior Leaders will get together and make up new program books for the coming year.

Christy Wurm reminded everyone they needed to bring two dozen cookies per child with them on 4-H Sunday so they could deliver cookies to the businessmen during 4-H Week.

Election of officers was held. The September meeting was adjourned.

Valerie Wurm
Reporter

Weather

| Date | High | Low | Prec |
|----------|------|-----|------|
| Sept. 23 | 80 | 44 | |
| Sept. 24 | 86 | 47 | |
| Sept. 25 | 90 | 48 | |
| Sept. 26 | 95 | 49 | |
| Sept. 27 | 83 | 50 | |
| Sept. 28 | 91 | 46 | |
| Sept. 29 | 74 | 38 | |

Happy 30th Birthday!

Love, your family

Just In Time For Hunting Season!!!

1999 Suburban LT,

Barn doors, 4x4, AT, 119k, #T3036A

\$3,500

| | |
|--|----------|
| 2008 Fusion SE, 2.3L, AT, 13K, #23423 | \$18,450 |
| 2007 Fusion SE, 2.3L, AT, 16K, #51556 | \$17,895 |
| 2006 Lincoln LT, 5.4L, AT, 20K, #T4527 | \$30,250 |
| 2001 F150 S/C XLT, 5.4L, AT, 64K, #T1285A | \$10,500 |
| 2007 Expedition EL XLT, 4x4, 5.4L, AT, 8K, #T2855 | \$31,000 |
| 2001 Windstar SEL, Fully Loaded, #T3785A | \$5,500 |
| 2005 Expedition Limited 4x4, AT, 54K, #T3802A | \$24,500 |
| 2002 Explorer XLT 4x4, AT, 87K, #T6560A | \$10,250 |
| 2006 F250 S/C XLT 4x4, AT, 43K, #T2149A | \$25,000 |
| 2003 Expedition E. Bauer 4x4, AT, DVD, #T8215 | \$15,450 |
| 2004 F250 R/C XLT 4x4, 6.0L, AT, 106K, #T1756A | \$20,500 |
| 2006 F250 R/C XL 4x4, 6.0L, 6M, 43K, #T9088A | \$26,500 |
| 2004 Explorer XLT, 4.0L, 4x4, AT, 1Owner, 60K, #T0109A | \$14,250 |
| 2006 F250 S/C, Lariat, 4x4, AT, 78K, #T1564B | \$26,000 |
| 2005 Taurus SE, 3.8L, AT, 52K, #53870A | \$9,000 |
| 2006 F250 S/C Lariat, 6.8L, 4x4, AT, #T2872A | \$25,500 |
| 1999 Tahoe LT, 4x4, AT, #11708A | \$10,500 |
| 2000 F250 S/C XLT, 4x4, 7.3L, #T3568A | \$13,500 |
| 2001 F350 Crew Lariat, 4x4, 6M, w/flatbed, #T5567A | \$10,000 |
| 2006 Escape XLT, 4x4, AT, Only 26K, #T8772A | \$17,300 |
| 2007 Explorer Sport Trac, V8, 4x4, AT, 29K, #T2069A | \$23,500 |
| 2004 F150 S/C, XLT, Long Box, 1 Owner | \$17,000 |
| 2006 Chevrolet 1500 S/C, 4x4, AT, #T7050A | \$19,000 |
| 1996 Chevrolet 1500, S/C, V8, AT, #T5739C | \$4,500 |
| 2002 Buick Rendezvous CX, AWD, V6, #T9036B | \$8,500 |
| 2006 Freestyle SE, FWD, AT, V6, #T6899B | \$13,000 |
| 2006 Freestyle SEL, Leather, FWD, V^, #T5873A | \$16,250 |
| 2006 Pontiac Torrent, V6, FWD, #T7985C | \$15,000 |
| 2007 Focus SE, 4 Cyl., FWD, #01355 | \$13,000 |
| 2008 Chevy Impala LS, 6 Cyl., FWD, #16970 | \$17,000 |

YOST FORD MERCURY

E. Hwy. 36 St. Francis, KS 67756

800-524-9678 Bob - Justin - Terry
785-332-2188 yostford.com

SHOWTIME: 7:30 p.m. **1 hr. 37 min.**

Journey to Center of the Earth

Oct. 3, 4 & 5

Brendan Fraser, Josh Hutcherson, Anita Briem, Seth Meyers, Jean-Michel Pare

CHEYENNE THEATER St. Francis, KS
785-332-2747

Children 12 & Under: \$3 All Others: \$5

Stuart's Jewelry

Our Bridal Registry

Couple registered:
Leigh Ann Faulkender & Mike Bandel

Wedding
Oct. 4, 2008

Free Wrap & Delivery Gift Certificates Available

785-332-2333
111 E. Washington • St. Francis

James E. Reeves, DPM
Podiatrist/Foot Specialist
Reconstructive Surgery
Foot & Ankle Injuries

For appointments call:
Rawlins County Health Center
785-626-3211

Wed., Oct. 22
Cheyenne County Hospital - P.M.
210 W. 1st • 332-2104

Thurs., Oct. 23
Atwood (a.m.) • 626-3211
Colby (p.m.)
CSMC, 175 S. Range
462-3332

CMC, 100 E. College Dr.
462-7511

Fri., Oct. 24
Atwood - All Day

CHEYENNE COUNTY HOSPITAL

210 W. 1st • St. Francis, KS
785-332-2104

Flu Shot Vaccine Clinic

at the Bird City Clinic

Saturday, Oct. 4

9 a.m. - Noon

MEDICARE patients no charge.
\$20 payable at time of service if no insurance coverage.

Blue Cross/Commerical insurances will be billed.
At this time we do NOT have VFC vaccine available for Medicaid/Uninsured Children.
Sponsored by: Cheyenne County Clinic & Health Department

St. Francis Clinic Hours
Monday - Thursday, 8 a.m. - 6 p.m.
Friday, 8 a.m. - 4 p.m.
Saturday, 9 a.m. - 12 p.m.

Hilltop General Store

"The Little Store That Can"

Come See Our New Coolers!
Come See Our Expanded Inventory!
Come Enjoy The Savings!

Prices Effective Oct. 2nd - Oct. 5th

| | |
|---|----------|
| Blue Bunny Milk/Gallon (Whole, 2%, 1%, Skim) | \$3.49 |
| "Grade A" Large Eggs/Dozen | 2/\$3.00 |
| Blue Bunny Cottage Cheese (24 oz. cont.) | \$2.49 |
| Crystal Farms Deli Sliced Cheeses (8 oz.) | \$2.89 |
| Blue Bunny Whipping Cream or Half & Half | \$1.00 |
| Blue Bunny Orange Juice (1/2 Gal.) | \$2.49 |
| Pillsbury Crescent Rolls (8 oz. tube) | \$1.69 |
| Farmhand Thick Sliced Bacon (1 lb. pack) | \$2.99 |
| Bacon Wrapped Beef Tenderloin (6 oz. frozen) | 2/\$6.00 |
| Boneless Skinless Chicken Breast (2.5 lb. bag) | \$4.99 |
| Oscar Meyer Deli Fresh Shaved Meats(9oz. pack) | 2/\$6.00 |
| John Morrell Smoked Bratwursts (10 oz.) | \$1.49 |
| Blue Bunny Ice Cream (1/2 gal., 9 flavors) | 2/\$6.00 |
| Starbucks Premium Ice Cream (3 flavors) | \$4.49 |
| Amish Potato or Macaroni Salad (16 oz. cont.) | 2/\$3.00 |
| US #1 New Crop Russet Potatoes (5 lb. bag) | \$2.00 |
| Caramel Apple, Asian Pear, Baby Carrots, Radishes, Celery or Head Lettuce (your Choice) | \$1.00 |
| Mama Rosa's Pizza (Pep. or Delux) 2/14" pizzas | \$5.99 |
| Hilltop Select White Bread 2/16 oz. loaves | \$2.59 |
| French Twist Cinnamon Puffed Pastry | \$2.99 |
| Betty Crocker Cake Mixes (4 flavors) | \$1.00 |

Hwy. 36 & Benton Street ~ St. Francis
Open 7 a.m. to 7 p.m. 7 days a week
785-332-2277

Check your renewal dates
— Current Rates —

The Saint Francis Herald

Area - \$33 KS - \$38
Out-of-State - \$42

Bird City Times

KS - \$30
Out-of-State - \$34

American Profile

Celebrating Hometown Life

See American Profile magazine in this week's issue of

The Saint Francis Herald

(available in local area only)

Brought to you by
The Herald

"Your sponsorship could be right here.

For more information contact:
Casey at 785-332-3162