

Ye Olde Country Church benefit set



Wes and Barbara Gilstrap

Anniversary party planned for Nov. 8

A 40th wedding anniversary open house for Wes and Barbara (Passmore) Gilstrap is being held from 2 to 4 p.m. mountain standard time on Nov. 8 at the Wray

Senior Center, 741 West 7th in Wray. Everyone is welcome to attend.

Cards can reach them at 340 Elm Court, Wray, CO 80758

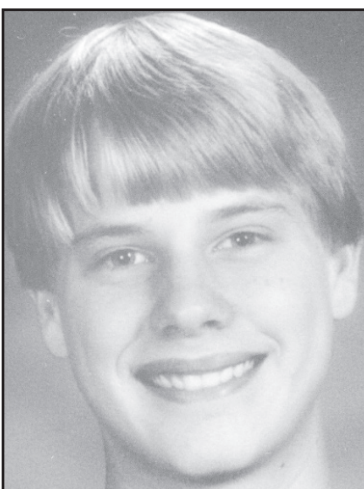
Cross country team goes to state meet

Lead by an 11th place finish by senior James Winston, the Ellsworth Bearcats are headed for a return trip to the State Cross Country meet in Wamego on Saturday. The Bearcats placed third in a tough regional meet which had four of the top-six teams in the state.

Winston was an all-league runner the week before with a ninth-place finish, leading the Cats to a second-place trophy in league. He led the Cats to a team championship in the Ellsworth Invitational with his seventh-place finish.

Ellsworth runners grouped up and came in between 11th and 24th to finish just behind Southeast of Saline and Hutchinson Trinity in the regional event.

Winston is the son of Dan and Cindy Winston of Ellsworth and



Winston

the grandson of Betty Jean Winston of St. Francis and Doris and Junis Stuhlmiller of Denver.

In Louisville, a small town near Boulder, Colo., lives a family who call themselves "The Ransom Notes." They will spotlight a fund-raising concert at the United Methodist Church, in St. Francis, at 2 p.m. on Nov. 9. Their goal is to help raise funds for new siding for Ye Olde Country Church next to the Cheyenne County Museum on U.S. 36, St. Francis. The museum is a significant reminder of the area's history and Christian background.

Saturday night, Nov. 7, at 7 p.m., they will also play a few numbers during an old-fashioned hymn sing at Ye Olde Country Church. Miriam Yonkey will play the old pump organ to accompany a couple of the hymns. Other local talent will perform during the Sunday concert.

Amanda Ransom, 20; Michael, 16; and Amelia, 14, travel in a Winnebago when they are performing. They sing and play classical, religious, and bluegrass music on various instruments. Amelia is the most versatile as she plays the violin, guitar, mandolin and viola but also sings.

The oldest of the Ransoms, Amanda, mostly plays the violin but branches out into mandolin, guitar, piano and string bass. She is a student at Chamber College in Greeley, Colo., majoring in music with a minor in women's ministry.

Michael is a junior and Amelia, a freshman. Both are home schooled by their mother, but they also take some online classes and college courses.

Michael plays cello and mandolin and sings. He is one of those rare musicians who can stand and even dance, while he plays the cello. He especially enjoys performing "The Golden Apple Dance." Previously, he played the piano and has branched out a little in violin.

A typical day for the Ransoms consists of their studies and practice, ending with bluegrass band practice in the family's basement. They used to perform mostly classical music, but as they entered their teen years, they became interested in bluegrass.

The group has used the Suzuki method of musical training. Amanda began the method at age 9, Michael at 8, and Amelia at 4.

The children come from a musical background. Their grandparents were self-taught musicians in guitar, trumpet, piano and vocal. For many years, they did some musical ministry at St. Paul's Lutheran Church, Herington, a parish served from 1971-1981 by Pastor David Rossbach of St. Francis.

For a typical performance, "The Ransom Notes" get \$300 to \$500 an hour, but they see their music basically as a ministry. Up to 30 percent of each performance but 100 percent of what they receive between Thanksgiving and Christmas is set aside for charity, especially for "those people who slip between the cracks."

Each year, they average 20-30 Christmas performances at hospitals, malls, restaurants, an-



Michael Ransom, one of the three Ransom children, will be playing the cello or mandolin and singing with the group.

tique shows, art fairs, etc. Then their parents provide matching funds for what the children set aside for charity.

"The Ransom Notes" have an April 2009 invitation to play a series of concerts in London with a violinist friend. They also have an invitation to share their music with a Christian commu-

nity in Korea.

Area residents are asked to tune in to KLOE, Goodland, from 9:30 to 10 mountain standard time on Saturday, Nov. 9, for Curtis Duncan's interview of the Ransom family.

The Cheyenne County Historical Society is hosting both the concert and the hymn sing. They hope for a large attendance at both events. Free-will offerings will be supplemented with funds by Thrivent Financial. This might also be a good time for businesses and organizations, who wish to do so, to contribute a donation. Ye Olde Country Church is available for family gatherings, weddings, baptisms, special worship services, small programs, etc.

Prairie Pak sign up deadline told

The deadline for signing up for the November Prairie Land Food Prairie Pak is Monday, Nov. 11. Prairie Land is designed to help people stretch their food dollars.



There are no income guidelines. The only qualification is helping others.

Volunteer for 4-H, church choir, teach Sunday school, take a walk and pick up trash, say a prayer for others. This converts your volunteer time into a tangible reward, groceries, provided by Prairie Land Food.

The Prairie Pak includes Old Carolina bacon, lean ground beef, tasty sandwich steaks, breaded cod portions, chicken thighs and John Morrell smoked sausage along with onions, celery, potatoes, sweet potatoes, apples, oranges, and banana cream pie. Besides the price, two hours of volunteer service is needed.

Also available for those getting the Prairie Pak are meat-only packages and fruit-and-veggie packages, each with one additional hour of service.

Buy a Prairie Pak and automatically be entered into a drawing to win a "free" Prairie

Pak for January, February and March. If you entered in October and will again in November and December, your name could be entered in the drawing up to three times. The winner will be announced on Dec. 18.

November specials include "Ham It Up," "The Gobbler," and "The Holiday Baking Box."

Food pick up day is Saturday, Nov. 22, at the United Methodist Church.

For contact information you may call Amanda Mahon at 308-297-3214 or cell 785-332-6371 or Video Connection, Empire Motel, Tim E. Poling D.D.S or Lee Nichols.



'No Hunting' signs available

at the
St. Francis Herald
310 W. Washington
785-332-3162
St. Francis

SAVE ON MITSUBISHI'S BIGGEST, BRIGHTEST AND BEST 1080P DLP® AND LCD HDTVs!

MITSUBISHI ELECTRIC
REAL DEAL

Mitsubishi WD-60735
60 Inch 1080p DLP® HDTV

DLP
TEXAS INSTRUMENTS
1080P
SCOLOR

Featuring Mitsubishi's Super-Slim DLP® Design and 6-color Processor

Mitsubishi LT-46246
46 Inch 1080p LCD Flat Panel HDTV

1080P
SCOLOR

Featuring Mitsubishi's Exclusive Ultra-Thin Frame™ and 6-Color Processor

Mitsubishi LT-52148
52 Inch 1080p LCD Flat Panel HDTV

1080P
SCOLOR

Featuring Mitsubishi's Exclusive Ultra-Thin Frame™ and 6-Color Processor

NO MONEY DOWN NO INTEREST FOR 1000 DAYS!*

Video Kingdom ~ Mon.-Sat. • 10 a.m.-6 p.m. ~ Sunday • 1-5 p.m.

414 Washington • St. Francis • 785-332-3207

MITSUBISHI THREE DIAMOND CARD Program Runs Oct. 2, 2008 through Nov. 2, 2008.
**Same as Cash offer on approved Mitsubishi Three Diamond Card purchases. Minimum Payments Required. No Finance Charges if purchase paid in full in 1000 days. If purchase not paid in full or Account not kept current, Finance Charges assessed from delivery date. Standard Rate of 22.8% APR. Default Rate of 36.8% APR. Minimum Finance Charge: \$2. Certain rules apply to the allocation of payments and Finance Charges on your promotional purchase if you make more than one purchase on your card. Call 1-888-367-4310 or review your cardholder agreement for information.
DLP® and the DLP logo are trademarks or registered trademarks of Texas Instruments.

On November 4th Re-Elect Ray Lee Commissioner District 2

Dependable and Honest
28 years as Sheriff of Cheyenne County
Korean War Veteran
Able to Make and Maintain a Balanced Budget.
Will Listen and be Fair to all Citizens
History of an Open Door Policy
Will Encourage the Growth of Our County
Thank You for all Your Support.

Pol. adv. pd. for by the committee to re-elct Ray Lee, Sam Goodale, Treca.

BOB STREVEY

for State Representative

To change Washington and Topeka change who represents us.

Vote for someone who has the courage to do what is necessary to fix our current mess.

Elect those who support ethanol and wind/solar development.

I will vote *Pro-life* and *Pro-family*.

www.votebob.com

Paid for by Bob Strevey campaign, Greg Lohofener, Treasurer