

Couple exchanges wedding vows

An early-evening ceremony united Allyse Lampe and Derek Ross in marriage on Saturday, May 23, 2009, at the United Methodist Church in St. Francis. Pastor Morita Truman officiated the double-ring ceremony.

Parents of the couple are Rod and Carla Lampe and Doug and Marla Ross, all of St. Francis.

Allyse, given in marriage by her family, was attended by maid of honor, Alexa Oelke, and bridesmaids, Lauren Ross, Ashley Holzwarth, Meredith Knodel, Lori Beth Rieger and Megan Lampe. The flower girls were Sawyer Ross and Emma Lampe.

Derek was attended by best man, Tervel Dlagnev, and groomsmen, Joe Ellenberger, Brett Lampe, Dylan Loyd, Cale Rieger and Tyler Lampe. Ringbearer was Tucker Ross. Candle lighters for the ceremony were Travis and Taylor Rogers.

Ushers for the wedding were: Jonathan Roelfs, Tanner Kinen, Gabe Walz and Dallas Walz. Per-

sonal attendants for the bride were Madeline Knodel, Kristen Poljansek and Jade Carpenter.

Guest book attendants were Brittany Beebout, Vanessa Shill and Suzie Wilson.

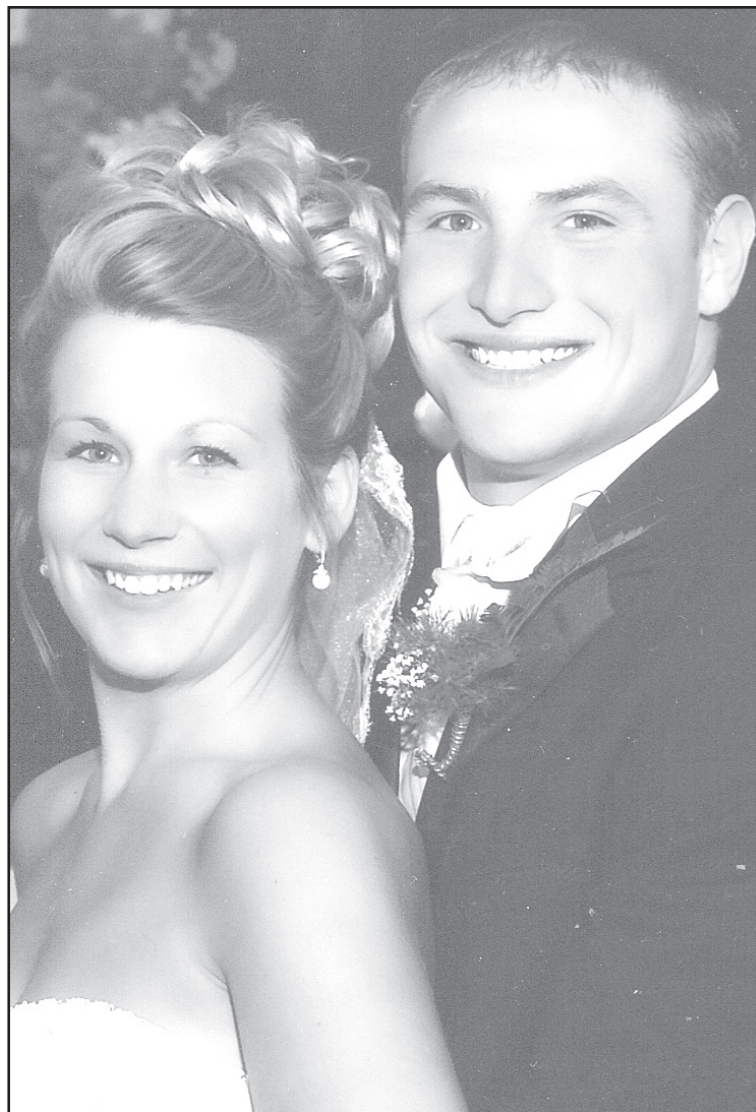
Providing music for the occasion were organist, Trema Trumbo and soloist, Raquel Grover.

The reception, dinner and dance were held at Riverside Recreation and hosted by Mike and Jo Rogers and Roger and Janet Jensen.

Grandparents of the couple are Alice Oelke, Hastings, Neb., Jack and Marge Lampe, St. Francis, Charlsie Rogers, St. Francis, and Kurt and Margaret Bucholtz, St. Francis.

Following the wedding, the couple honeymooned in Jamaica.

Derek and Allyse are living in Kearney, Neb., where Derek is completing his history and philosophy degree at the University of Nebraska - Kearney, and Allyse, after completing her business degree, is employed at Herberger's Department Store.



Mr. and Mrs. Derek Ross

Introducing

Creed Dunamis Wood

Nate and Shana Wood announce the birth of their second child, Creed Dunamis Wood. Creed was born at Stormont-Vail Hospital in Topeka on Thursday, Nov. 12, 2009, at 9:24 a.m. He weighed 6 pounds, 15 ounces, and was 19 1/2-inches long.

Grandparents are Gene and Patty Voeller of St. Francis, Sherri and Kenny Kohman of Abilene and Dana Wood of Kansas City. Great-grandparents include the late Kenneth and Ellen Voeller, June Richers of Wray, Colo., Betty Jo Young of Satanta, and the late Gail Young.



Wood

St. Francis News

Milton and Betty Lampe were Thanksgiving guests of Kirk and Debbie Grizzell of Macksville from Wednesday, Nov. 25 to the 29th.

Travis Grizzell of Hays and Kyle Grizzell of Pratt joined the family. Kyle returned home on

Thursday evening and Travis on Friday evening.

Debbie's birthday was honored on Wednesday evening with a family dinner. Cake and ice cream were served.

On Saturday, they also enjoyed eating dinner with Kyle in Pratt.

Shoe boxes of supplies are shipped

By Karen Krien

karen.k@nwkansas.com

During the month of November, an appeal was made for residents to give items so children in Mexico, Central and South American countries would have the gift of a shoe box filled with items.

In St. Francis, people brought their boxes to the Baptist Church and 232 boxes were taken to KGCR radio just west of Brewster where they were loaded in a semi. From there, they went to Denver for processing and then on to Mexico or other Central and South American countries.

A total of 1,529 boxes were collected in the nine northwest Kansas counties. That was up from 1,002 collected in the same region last year and exceeded this year's goal of 1,500 boxes.

Besides St. Francis, other relay sites were Goodland, Hoxie, Sharon Springs, Oakley, Quinter, Oberlin and McDonald.

We were so excited by the response from northwest Kansas, said James Claassen, KGCR station manager. It was a definite answer to prayer.

The collection, he said, had its challenges. There was rain and the semi got stuck as the trailer was being delivered. They had wrapped up the collection week with snow and one of the relay sites had to come in a day late because of the weather.

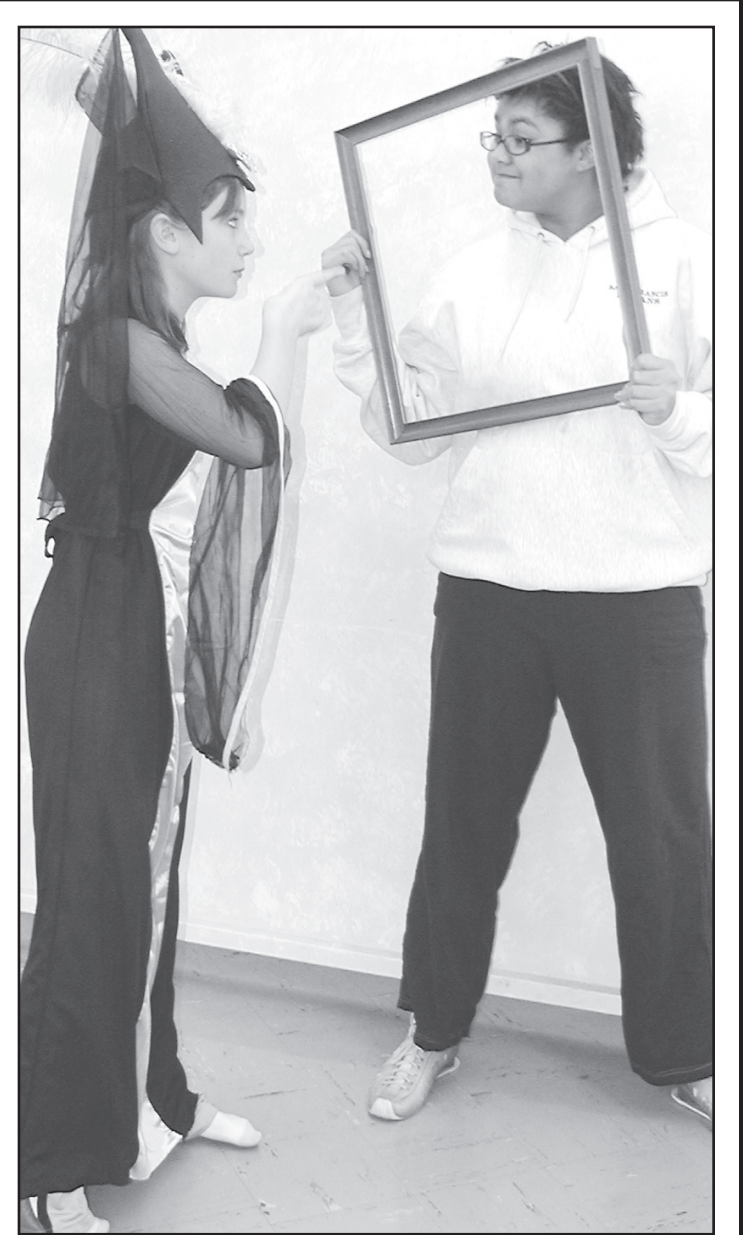
"But through it all, the Lord blessed, the people of northwest Kansas came through and a lot of shoe boxes will be going to needy kids," Mr. Claassen said.

Although collection week is



LOADING THE TRUCK — St. Francis residents filled 232 boxes of supplies for the Shoebox drive. Pastor and Janelle Glidewell (right) helped load the goods.

over, the job is not finished, he said. Now it is time to pray for the children these boxes will be delivered to. Each box includes a gospel tract introducing the children to the love of God. The toys and other items will wear out or be used up but the change Christ can make in these children's lives will go on forever.



REHEARSAL — MaKayla Taylor and Brianna Cooks practice for the upcoming girls musical.

BUSINESS CARD DIRECTORY

To list your business drop us a card!
Call 785-332-3162 today.

St. Francis Mercantile Equity Exchange

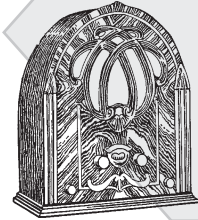
Mike Henderson
Branch Manager

1-800-295-2113 Toll Free
785-332-2113 Main Office & Grain
785-332-2421 Station, Bulk Fuels, LP
785-332-2129 Fertilizer, Feed, Chemicals, Seed
308-297-3223 Haigler Branch
785-332-3450 Fax



123 N. River St. • St. Francis, Kansas 67756

"Nancy's" Sainty Bed & Breakfast



301 E. Spencer Str.
St. Francis, KS 67756
PH: 785-332-3274
Cell: 303-809-3138

St. Francis Mercantile Equity Exchange

Sharon Barnhart
Controller

1-800-295-2113 Toll Free
785-332-2113 Main Office & Grain
785-332-2421 Station, Bulk Fuels, LP
785-332-2129 Fertilizer, Feed, Chemicals, Seed
308-297-3223 Haigler Branch
785-332-3450 Fax



123 N. River St. • St. Francis, Kansas 67756

Mobe's Archery Supply

Complete Bow Shop & Services

Josh Moberly
1430 Rd. 6 — St. Francis, Ks. 67756
785-332-2500 shop or 970-630-1196 cell
Call for business hours & Services
email: MobeArchery@Live.com

Howards Tri State Construction

>Drywall >Painting >Carpentry
>Roofing >Tile Work >Insulation
>Garages >Additions >Basements
New or remodel- We do it all!

Free estimates!

Jason 1-970-630-9051
Travis 1-970-630-5122
Bill 1-970-630-7064

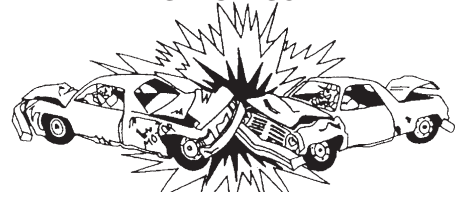


Alph's Scrap Iron & Welding

Derek Alphus Fromholtz

Cell 715-441-9633 • Home/Wife's Shop 785-332-3338

Demo Team



FARM MACHINERY AUCTION

Saturday, Dec. 12, 2009 @ 11 am CT
Storm Date: Tues., Dec. 15, 2009 – Listen to
KXXX 790 AM for updates

Auction Location: Western Auction & Real Estate
Auction Pavilion, W. HWY 36, St. Francis, Kansas

TRACTORS - TRUCKS - IMPLEMENTS - CATTLE EQUIP. & MISC.

1995 Ford 8670 Tractor, front wheel assist, 16 spd power shift trans., cab & air, 1000 PTO, 3 pnt, 4 hyd, 18.4R42 rear tires, 16.9R28 front tires, 5900 hrs., w/ Buhler 2895 Quick Attach Loader w/ Grapple fork, 8, bucket; 1953 Ford 161 Tractor, narrow front w/ 3 pnt, 540 PTO, 14.9.28 tires, runs good; 1953 Case Tractor, wide front w/ 540 PTO, 9-24 tires, SN 5359542; 1973 IHC 1466 Farmall Turbo w/ cab & air, axle mount duals, 18.4R38 tires, dual hyd., 1000 PTO, 3 pnt., 9,802 hrs, 2,300 hrs on engine overhaul; 1971 IHC Loadstar 600 Feed Truck, 4 spd/2 spd trans., 360 motor, 30,683 mi w/ Harsh 350 Mixer Box w/ Eaton Digital Scales; 2007 New Holland Baler, Model BR 780A, net or twine wrap, Xtrasweep, SN Y6N017348; 2002 New Holland 1475 Hyrdo Swing Haybine, 16., HS Series, SN 1140047; 2004 Ford F150 Pickup, Lariat, Black, Covered Box, 154,000; 1999 Mercury Sable, 4 door, auto trans., V6, 122,000 miles; 1990 Lincoln Town Car, white, clean, 219,000 miles; 1982 Ford F150, 4 spd, V6, air, high miles; 1991 CarMac Trailer, 4 horse slant w/ tack storage, 5th wheel; JD 1210 Grain Cart; Murray 10.5 hp Riding Lawn Mower, 30" cut; New Holland Deluxe Skid Loader, Model L555, SN 840820; Mountaineer 4 Wheeler; 4'x8' Lit-Tex tilt bed trailer w/ metal floor, single axle; 4'x5' Flex King Sweeps w/ old style pickers; 8' Graham Hoeme Chisel, lever lift w/ new 16" tires; IHC Model 550 Manure Spreader, 12'x5' box, single axle w/ 8.25-20 tires, 540 PTO, SN 1190848C001437; Older JD Drills; 4 wheeled Hay Trailer; 500 gal. Water Tank on Trailer; 1000 gal. Propane Tank w/ wet leg on 4 wheel trailer; 1000 gal Propane Tank, topfill w/ wet leg; 125 gal Propane Tank, 50% full; 12' Auger, 4" w/ elec. motor; Rhino 3 pnt. Post Hole Digger w/ 8" Auger, like new; (200) 7/16" Steel Posts w/ Insulators; WW Squeeze Chute w/ Palpation Cage, self catch head gate; Linn Squeeze Chute w/ Palpation Cage, self catch head gate; (2) Calf Creep Feeders w/ Panels; (3) HiQual Big Round Bale Feeders; (2) 11.22.5 Used Truck Tires; (5) 11.24.5 Used Truck Tires; (5) 285-75R x 24.5 Semi Truck Tires; 28" Buzz Saw, belt driven

Licensed in Kansas, Colorado, and Nebraska for your Real Estate needs!



Skip Petersen, Sales Agent & Auctioneer - 785.332.2368
Robin A. Petersen, Assoc. Broker, Auctioneer - 785.332.5586
Brett Petersen, KS Sales Agent & Auctioneer
Gary L. Wickwar, KS Sales Agent
W. Hwy. 36 ~ P.O. Box 928
St. Francis, Kansas 67756 ~ 785.332.8990
Betty L. Petersen, Broker