

Marriage vows spoken by couple

Heidi Rohweder and Timothy Gohl were joined in marriage on Sept. 12, 2009, in a late afternoon, double-ring ceremony at Celebration Community Church in Hays. Rev. Kyle Ermoian officiated the ceremony.

Parents of the couple are Dick and Michele Rohweder and Deb Gohl all of St. Francis and DeLynn Gohl of Elsie, Neb.

The bride wore an ivory satin strapless princess-line gown with an espresso-brown sash and chapel-length train. The gown was embellished with sequins and crystal beading.

The matron of honor was Kari Toon and the bridesmaids were Kristol Kiger and Leslie Bailey, cousin of the bride. The attendants wore espresso cocktail-length dresses with pool blue trim.

The flower girls, Sapphira and Kiera Bailey, cousins of the bride, wore pool dresses with espresso sashes and carried baskets of silk rose petals.

The groom wore a classic full dress tuxedo complete with tails and a turquoise vest and bowtie. Bill Arledge was the best man and the groomsmen were Dan Kiger and Brad Carney. The groomsmen

were clad in traditional black tuxedos with turquoise vests and ties.

Candlelighters for the ceremony were Shaina Gohl, sister of the groom, and Devin Rohweder, brother of the bride. The guest book was attended by Lori Gohl, sister of the groom.

The bride was escorted down the aisle by her father and given away by her father, mother and brother. Following the ceremony, friends and family celebrated with the couple at The Fanchon Ballroom in Hays with a dinner, dance and reception.

Grandparents of the couple are Lavon Schlittenhardt of St. Francis; Delores Gohl of Culbertson, Neb.; and Jerry and Sandy Patterson of Hayes Center, Neb. White roses on the altar were in memory of the couple's grandparents who are deceased.

The groom is a 1999 graduate of St. Francis Community High School and a 2002 graduate of Northwest Kansas Technical College. He is employed at The Home Depot and a member of the Kansas National Guard.

The bride is a 2003 graduate of St. Francis Community High School and a 2007 graduate of



Mr. and Mrs. Tim Gohl

Fort Hays State University with a bachelor of science in nursing. She is working as an registered nurse at Hays Medical Center in

the intensive care units.

The couple honeymooned on a seven night-Caribbean cruise and is now at home in Hays.

Tax base changed in last five years

By Karen Krien
karen.k@nwkans.com

In the last five years, Cheyenne County has lost \$7,247,329 from the tax base because of the property valuation.

The commissioners reviewed information sent to them from Paul Steele, Thomas County Commissioner. He had sent a study which revealed that rural counties have lost a substantial portion of their farmland tax base starting in 2004. Counties with large amounts of their land devoted to pasture appear to suffer the most; grassland is now valued for ad valorem purposes at \$10 per acre, the same value that is assigned to land that has no economic use whatsoever.

In 2004, Cheyenne County farmland value was \$16,048,390 but, by 2009, the value was \$8,801,061, a difference of \$7,247,329, or a 45.16-percent drop. In Northwest Kansas, the 19 county total in 2004 was \$296,737,760 and in 2009, it was \$191,709,055, a difference of \$105,028,705 or a 35.39 percent drop.

Mr. Steele proposed sending a letter to the Kansas Attorney General to get an opinion since the legislators do not appear to be interested in dealing with the anomaly. The commissioners made no decision.

Sheriff's report

Craig Van Allen, sheriff, said officer, Kent Allard, will be going to field sobriety training at the Kansas Law Enforcement Training Center in Salina. This will be at no charge to the county, since county officers have helped teach classes at the academy.

For several years, the county sheriff's office provides law coverage for the city of Bird City. Last year, the city paid \$33,000 but, the commissioners pointed out that there has been a raise in fuel.

The county provides an average of 147 hours in officer coverage of Bird City. After discussion, the commissioners agreed to raise the contract to \$34,000 or 3 percent.

Fence line

Kari Gilliland, county attorney, discussed Craig Schoenrogge's proposed fence line. There was the question of was a road paid for by FEMA funds, and, if so, would it be 80-foot wide or 66? Mrs. Gilliland said she would follow up and see if the matter could be resolved.

Letter signed

Dr. Ed Mills, president of North-

west Kansas Technical College, Goodland, talked about the funding cuts for the technical college. The college brings in \$10 million to the surrounding area. They are, he said, one of the top 20 technical colleges in the United States.

The college has no taxing authority so the only way they can make up a \$300,000 cut is by raising tuition. With only 350 students, the cost cannot be made up by raising tuition.

Dr. Mills asked the commissioners for a letter to the Kansas Board of Regents, supporting the current funding level, without funding cuts. They signed a letter of support at the current funding level, before cuts.

Emergency medical service

Janelle Bowers, emergency medical service director, presented insurance write offs in the amount of \$7,800.

There was discussion over the mock emergency that took place over the weekend. Clerk Terry Miller was a "victim" and said he felt the response by the emergency medical service and fire department was overwhelming and felt everyone present did an excellent job.

Noxious weeds

Dave Flemming, county road and bridge supervisor, and Justin Lohr, noxious weed supervisor, talked about a plan of action regarding noxious weeds within the county. Due to the wet weather, bind weed and thistles are flourishing, they said.

There are many problem areas within the county right-of-ways as well as resident's land. After discussion, the commissioners agreed that Mr. Lohr needed to concentrate on treating the right-of-ways.

If landowners want the county to treat their noxious weeds, they should be directed to a list of private sprayers, as the county weed department's main interest isn't in treating private land. After Mr. Lohr left the meeting, it was decided to increase his wage by \$.50 per hour since he has achieved all his accreditations.

Mr. Flemming warned the commissioners of an impending large bill to repair the D6 Dozer.

In other business

In other business:

- A wage agreement for Michael Blehm, sheriff's officer, was signed.

Next meeting

The next commissioners' meeting has been set for 8 a.m. on Wednesday in the commissioners' room in the courthouse.

Members earn recognition

By Karen Krien

karen.k@nwkans.com

Members of the Cheyenne County Wildlife organization were recognized Monday, June 14, at the St. Francis City Council meeting.

The organization, Mayor Scott Schultz said, helps the community and citizens in several ways. This spring, the members, with the help of the county crew and equipment, were responsible for cleaning up Keller Pond, northwest of St. Francis. The county crew dredged the pond, bringing the bank back to where it had originally been. Through the years, the sand has filled in the pond and the banks had been overgrown with brush.

Today, the pond looks clean and fishermen can be found there almost every night.

"We look forward to working with the city in future projects," said Tim Stimbart, Wildlife president.

Members plan to plant grass and trees in the area.

The organization, at the beginning of each year, stocks the pond with trout in hopes of having an ice fishing contest. However, the winters are generally mild enough that it ends up being just a fishing contest that is enjoyed by fishermen, young and old.

The Wildlife organization sponsors the gun and archery range at the gun club south of St. Francis.

We also give tremendous support to the 4-H shooting sports project and hunter education, Mr. Stimbart said.

Other projects include: the tree planting program and giving scholarships for both St. Francis and Cheylin seniors.

Those representing the organization at the council meeting were Martin Hilt, Gordon Ross, Tim Stimbart, Hal Sager, Rodney Radcliff, Francis O'Leary and Josh Moberly.

Class of '45 enjoys alumni activities

Thirteen classmates, plus six spouses, of the class of 1945 enjoyed a catered dinner Friday evening, June 18, at the Cheyenne Manor. Each classmate told how they met their spouse and had a good time by visiting, reminiscing and sharing pictures. Class members deceased were remembered.

At 10 .m. on Saturday morning, the group gathered at the Cheyenne County Museum for coffee, tea and cookies.

In the evening, the group met at the high school for class pictures and the banquet, and entertainment in the park.

Classmates and spouses present for the weekend activities were: Laverne and Donna Boll, Willard Busby, Warren and Pat Cook, John Finley, Milton and Betty (Worley) Lampe, Howard and Marlys Poulignot and Rueben Schultz, all from St. Francis. Out-of-town guests were Betty (Rueb) Metzler, Deming, N.M.; Richard Morrell, North Platte, Neb.; Pastor Gilbert and Fayth Mueller, Yukon, Okla.;

Darlene (Peter) Ochsner, Benkelman, Neb.; Don Topping, Springfield, Mo., and Dr. Royce and Patsy Walz of Topeka.

Three class members, Mary Lou (Nighswonger) Munn, Benkelman.; Mildred (Neitzel) Edwards, Salina, and Lyle Linnell, Coeur D'Alene, Idaho., had planned to attend, but because of health reasons couldn't come.



Upcoming Promotions

For more information contact Casey McCormick at:



The Saint Francis Herald

Bird City Times

P.O. Box 1050, St. Francis, KS 67756 • 785-332-3162

Tri-State Antique Engine & Thresher Show

July 29 - July 31
Featuring stories about the demonstrations, buildings, history, shows and Queens.



Cheyenne County Fair

Aug. 4 - Aug. 7

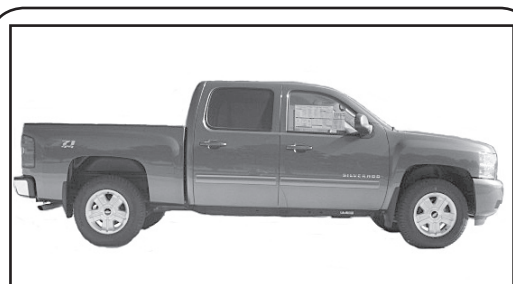
Featuring 4-H'ers, fair and carnival activities, schedule of events and other interesting happenings at fair time.



What's Hotter Than Dad's New Briefs He Got For Fathers's Day? How About The Savings Going On Now At Vince's Gm Center With 0% Apr Up To 72 Months Or Up To \$5000.00 Customer Cash On Select 2010 Models...



2010 Buick Lucerne, Crystal Red, Leather



2010 Chevy Crew Cab, Blue Granite, Leather



2010 GMC Yukon XL, White, Leather, 2 Dvd Players



2010 GMC Crew Cab, 3/4 Ton, White, Cloth

thought to ponder.....why is there a light in the fridge and not in the freezer?

VINCE'S GM CENTER

"Selling Cars for Years....Making Friends For Life."

719-346-5541 • 800-231-8991

We Look Forward To Serving You

1697 Rose Ave., Burlington, Colorado

www.vincesgmcenter.com