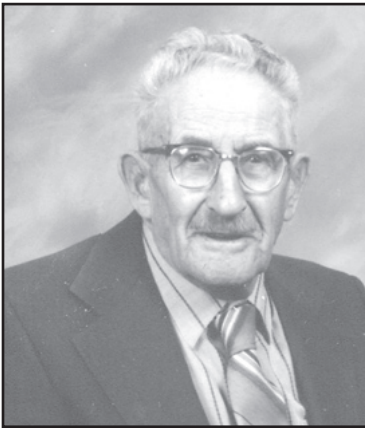


## Man to celebrate birthday

Edwin Meyers will be celebrating his 99th birthday on Saturday, Jan. 15. Edwin is at the Prairie Senior Living Center, 1625 S. Franklin Ave., Colby, KS 67701.



Meyers

## Introducing

### Taya Jae Dale

Darren and Tana Dale announce the birth of their daughter, Taya Jae, on Dec. 17, 2010, at 9:16 p.m. at the Dundy County Hospital in Benkelman, Neb. The little miss weighed 7 pounds, 6 ounces and was 20-inches long. She has a big brother, Taos, age 5, to welcome her home.

Grandparents are Royce and Jan Rambat of Bird City, and Agnes Dale of Durango, Colo.



Dale

## Rec 4 U

Welcome to St. Francis Recreation Commission's first newsletter. It's focus is to give you a look at what the rec. commission has to offer. We are kicking off the new year with four classes and activities to get you out and about during the winter months. All activities are interest based so we need you to join in to make them successful.

On Sunday, Jan. 9, Matt and Myla Bandel will start a six-week country dance class. They will begin with the basics and build from there each week. So, get your dancing shoes on, grab a partner and join the Bandels in the grade school gym from 5 to 6:30 p.m.

Are you ready for some exercise after the holidays? If so, plan on attending adult coed volleyball starting Jan. 16. Each Sunday evening at 7 through the winter, games will be organized at the St. Francis high school.

Ruth Milliken and Kari Gilliland are offering a six-week "Back to Basics" cooking class on Monday nights beginning Jan. 17. Each week, a different course will be highlighted - appetizers, soup/salad, main dish, breads, desserts and the final class will combine all five courses for a complete meal. There is a fee to cover all food and supplies.

## Student News

**Kansas Wesleyan University**  
Heidi Yonkey of Wheeler has been named to the Kansas Wesleyan University president's honor roll for the fall 2010 semester.

One hundred and thirty of the university's students were named to the president's honor roll for this semester. Full-time students with a semester grade point average of at least 3.75 and no incompletes are listed on this honor roll.



**James E. Reeves, DPM**  
Podiatrist/Foot Specialist  
Reconstructive Surgery  
Foot & Ankle Injuries  
For appointments call:  
**Rawlins County Health Center**  
785-626-3211  
**Wed., Jan. 5**  
Cheyenne County Hospital - P.M.  
210 W. 1st • 332-2104  
**Thurs., Jan. 6**  
Atwood (a.m.) • 626-3211  
Colby (p.m.)  
CSMC, 175 S. Range  
462-3332  
CMC, 100 E. College Dr.  
462-7511  
**Fri., Jan. 7**  
CSMC at 9 a.m.

**Kansas Day**  
Kansas Day will be observed on Saturday, Jan. 29. This is the 150th birthday celebration for the state right here in Cheyenne County at the Legion Hall in Bird City. Registration begins at 10, with a potluck lunch at noon.

Guest speaker, William D. Keel will present a program titled "The German Heritage of Kansas".

**Historical Society**  
Jan. 16, is the date for the annual meeting of the Cheyenne County Historical Society. The event will begin at 2 p.m. in the Old Country Church on West Highway 36. The business meeting will be followed by "Kansas History Stumpers," prizes, special presentations and a birthday cake.

Everyone is welcome to celebrate Kansas 150th birthday with the Historical Society.

**Riverside Recreation**  
The annual board meeting for Riverside Recreation is being held at 7 p.m. on Wednesday, Jan. 12, at the club house. See ad.

**Chamber annual meeting**  
The St. Francis Chamber of Commerce annual meeting will be held at 6:30 p.m. on Monday, Jan. 24, at Riverside Recreation dining room. Soup, cinnamon rolls and relish tray will be served. There will be a review of 2010 and the election of one board member to finish the term of Crissy Cooks. Reply if coming by calling 332-2961 by Jan. 20.

**High school basketball**  
The varsity basketball teams will travel to Hoxie on Friday evening and will entertain Idalia here on Tuesday night.

**High school wrestling**  
The varsity wrestlers will be involved in a round robin at Stockton on Friday they will meet Stockton, Hill City, Osborne and WaKeeney.

Saturday, Jan. 8, the junior varsity will compete at the Dundy County Tournament.

**City Council**  
The St. Francis City Council will meet at 7:30 p.m. on Monday, Jan. 10.

**Board of Education**  
The St. Francis Board of Education will meet at 7 p.m. on Thursday, Jan. 13.

**Head Start**  
Cheyenne County Head Start is accepting applications for the 2011-2012 school year. This is a free preschool program for 3- and 4-year olds of qualifying families residing in Cheyenne County. The classroom is located at 222 E. Webster, St. Francis. To apply or receive additional information, please call the classroom at 332-3110 or Lori Rieger at 332-2418.

**Dog tags are available**  
2011 Dog Tags are available at the St. Francis City Office. Details in ad in this issue.

**Veterans Affairs**  
Jody Tubbs of the Kansas Commission on Veterans' Affairs, will be in St. Francis at 10:30 a.m. on Thursday, Jan. 6, at the county clerk's office. People may also contact the Veteran's Affairs office in Colby any Monday, Wednesday or Friday at (785) 462-3572.

**Chamber scrip**  
People receiving St. Francis Chamber scrip need know that the scrip can be spent in any business in Cheyenne County. However, the scrip cannot be redeemed for cash, cannot receive change nor can it be deposited. The scrip can also be used to pay taxes or light bills.

Chamber suggested that the scrip money be used by March 2011.

Businesses can deposit the check in the bank.

**Salvation Army online**

Salvation Army is currently running their Kettle campaign. Donations can be made to the Cheyenne County Salvation Army unit by going to [onlinekettle.com](http://onlinekettle.com) (Select unit: First name: Cheyenne Co Last: Kansas) or they can be mailed to: TSA, PO Box 462, St. Francis, KS 67756, or dropped off at the Cheyenne County Treasurer's office.

**Video cameras needed**  
The St. Francis Camera Committee needs one or more video cameras to record meetings. Contact *The Saint Francis Herald*.

**Peace of Mind AA**  
Peace of Mind AA will meet at the St. Francis Public Library at 7 p.m. on Tuesdays. Contact Kris D. at

(785) 332-4410 or (785) 772-5090.

**Narcotics Anonymous**  
Narcotics Anonymous meetings are held at 104 W Webster/Methodist Education Building on Sunday nights at 8 p.m. and Thursday nights at 7:30 p.m. Contact (785) 342-0028.

**Northwest Kansas Family Shelter**  
Northwest Kansas Family Shelter provides 24-hour 7-day-a-week service to victims of domestic violence and sexual assault. Weekly support groups are available for women and children within the northwest Kansas area. For information please call the toll-free number 1-800-794-4624.

## School Menu

**Monday**  
Breakfast: French toast sticks, syrup, juice, cereal assortment, milk.  
Lunch: Chicken fajitas, lettuce, tomato, cheese, salsa, sour cream, seasoned rice, pineapple slices, fortune cookie, milk.

**Tuesday**  
Breakfast: Breakfast casserole, toast, juice, cereal assortment, milk.  
Lunch: Barbecued rib sandwich, smiley fries, broccoli, ice cream bar, Mandarin orange Jello, milk.

**Wednesday**  
Breakfast: Belgian waffles, strawberries, whipped topping, juice, cereal assortment, milk.

**Monday**  
Lunch: Macaroni and cheese or ravioli with meat sauce, vegetable blend, garlic toast, peaches, milk.

**Thursday**  
Breakfast: Breakfast taco, salsa, juice, cereal assortment, milk.  
Lunch: Cheeseburger, lettuce, tomato, pickles, onions, spicy fries, corn, tropical fruit, milk.

**Friday**  
Breakfast: Coffee cake, juice, cereal assortment, milk.  
Lunch: Goulash, peas, French bread, sliced pears, chocolate cake, milk.  
• Salad bar is offered at noon daily in the junior/senior high school.

**SHOWTIME: 7:30 p.m. 2 hr. 5 min.**

**TRON**  
*Action/Adventure, Science Fiction and Sequel*

**Jan. 7, 8 & 9**  
PG for sequences of sci-fi action violence and brief mild language.

**CHEYENNE THEATER** St. Francis, KS  
785-332-2747  
Children 12 & Under: \$3 All Others: \$5

**2011 DOG TAGS ARE AVAILABLE**

Come to the City Office, 209 E. Washington, to register your dog(s).

**ALL Dogs that live in the city need 2 tags: a rabies tag from a veterinarian and a city dog tag from the city office.**

**The Key to Saving on Your Insurance.**

Talk to us about our Companion Policy Discounts. Insure your home and cars with Shelter and you could qualify for additional discounts.

It's never been easier to keep all of your keys together and save money at the same time.

**Don Holliman**  
514 Main, Atwood, Ks. 67730  
785-626-3082

Fifth Street Apartments in Bird City, Kansas, have 2-bedroom duplex apartments for rent. We are offering free cable television for one year to new tenants. Applicants must income qualify for this property. For more information and an application you may contact N.W. Kansas Housing, Inc. at 785-421-2151 or pick up an application at Century II in Bird City.

**CHEYENNE COUNTY HOSPITAL**  
210 W. 1st • St. Francis, KS  
785-332-2104

**January Calendar**

Dr. Rubinowitz Jan. 4  
Dr. Frankum Jan. 5, 19  
Dr. Saba Jan. 21  
Dr. Reeves Jan. 5  
Dr. Curtis Jan. 13, 27  
Mammogram Jan. 4, 25  
Dexascan Jan. 12  
Nuc Med Jan. 11  
MRI Jan. 7, 14, 21, 28

For more information or to schedule an appointment call 785-332-2104

**Check your renewal dates**  
— Current Rates —

**The Saint Francis Herald**  
Area - \$38 KS - \$42  
Out-of-State - \$48

**Bird City Times**  
Area - \$33 KS - \$36  
Out-of-State - \$40

**American Profile**  
Celebrating Hometown Life  
See American Profile magazine in this week's issue of **The Saint Francis Herald**  
(available in local area only)

Brought to you by The Herald

**"Your sponsorship could be right here. For more information contact: Casey at 785-332-3162"**

## 2011 F150's are arriving!

Be sure to come by & Check them out!

2009 Taurus X E. Bauer, DVD, AWD, 15K, #T5080	\$26,500
1999 Crown Vic Cloth, 73K, Blue, #53870B	\$6,500
2004 Crown Vic LX, Lthr, 4.6L, 85K, #08630A	\$7,500
1996 Chrysler Sebring LXI, 150K, White, #45514A	\$1,750
1996 Lincoln Continental, Lthr, 115K, Tan, #25307C	\$1,895
2006 F150, S/C, XL, L.Box, AT, 4x4, 47K, White, #23451A	\$18,500
2006 Ranger, S/C, SLT, AT, Cloth, 4x2, 29K, #T1823A	\$13,900
2009 Chevy 1500 Silverado S/C, 4x4, 26K, #T0834A	\$24,000
2006 F250, S/C, XLT, 6.0L, 4x4, AT, 88K, White, #T8116A	\$19,995
2006 F250, R/C, XLT, 6.0L, 4x4, AT, 110K, Beige, #T3134A	\$18,000
2008 F350, S/C, XL, 4x4, AT, 6.4L, Flatbed, 80K, #T7537A	\$27,995
2008 Buick Enclave, FWD, Lthr, Silver, #T5703A	\$27,900
2008 Mercury Sable Premier, 27K Miles, #27009	\$19,995
2006 Freestar SEL, Cloth, AT, 71KMiles, #60770A	\$10,895
2010 Focus SE, AT, 4 door, 20K, #27020	\$15,500
2008 F250 S/C Lariat, 4x4, 6.4L, AT, 49K, #T1737A	\$35,900
2008 F250 Crew XLT, 4x4, AT, 6.4, 70K, #T3329A	\$34,200
2002 Chevy Trailblazer 4x4, 129K, #T56788,	\$7,650
2007 Roketa Maui 50 Scooter, #18432B	\$1,000
2004 Chevy 1500 S/C, L. Box, AT, 4x4, 138K, #T8431B	\$10,500
2006 F250, Crew Lariat, 4x4, 113K, #T2049A	\$25,900
2010 Explorer E. Bauer, only 18K, #T5631	\$30,500
2008 Toyota Tundra Crew SR5, 92K, #T1122A	\$22,995
2008 F250 R/C, XL, 4x4, AT, 6.4L, 45K, #T5675A	\$29,500
2008 F250 R/C, XL, 4x4, AT, 6.4L, 45K, #T5676A	\$29,500
2008 F250 R/C, XL, 4x4, AT, 6.4L, 40K, #T5677A	\$29,500
2006 Acura TL, AT, Sunroof, Leather, #25830A	\$17,500
2007 F150 Crew XLT, 4x4, AT, 56K Miles, #T9464	\$25,900
2010 Fusion S, FWD, AT, only 993 Miles!, #48583	\$19,800
2006 Fusion SE, AT, FWD, 99K, #T0960C	\$8,995
2004 F350 Crew XLT, 4x4, L.Box, 112K, #T1256A	\$19,995
2010 Escape XLT, AWD, 10K, #T5020	\$22,000
1996 Chevy Tahoe 1500, AT, 4x4, #T5300C	\$3,995
2004 Freestar SEL, 2nd row CPT, pwr side dr. #T7020A	\$9,500
2010 Taurus SEL, FWD, 9KMiles, #52324	\$28,250
2005 Taurus SE, AT, Cloth, 119K, #T9034B	\$5,300
2008 Explorer XLT, AT, 4x4, 37K, #T7141A	\$21,500
2006 F550 XL Crew, AT, 4x4, Serv. Bed, #T8939A	\$27,000
2010 F150 Crew XLT, 4x2, cloth, 6K, #T1323A	\$29,000
2007 F150 Crew Lariat, 69K, Clean Truck, #T3158A	\$26,500
1999 F150 S/C XLT, 4x4, Topper, #T9479A	\$5,500
1999 Chrysler Concorde LX, 4 DR, #T3363B	\$2,750
1995 Windstar FWD, cloth, #T2434B	\$1,250
2009 F150 Crew Lariat, 4x4, 39K, #T0869A	\$32,800
1994 F250 S/C 4x4, 186K, #T9298C	\$6,000
2008 Explorer E. Bauer, 4x4, AT, 48K, #T5192A	\$25,250
1977 F150 R/C 4x2, AT, 100K, #T8182B	\$800
2002 Explorer Limited 4x4, DVD, 136K, #T2068B	\$7,500
2006 F350 Crew Lariat, 4x4, L. Box, 6.0L, #T2068C	\$23,500

**YOST FORD MERCURY**

Your one stop Ford Store for over 27 years for sales and service.  
530 E. Business US Hwy. 36 St. Francis, KS 67756

800-524-9678 Justin • Kodi  
785-332-2188 yostford.com