

Bulletin Board

Lenten Luncheon

The annual Lenten Luncheon series, sponsored by the St. Francis Ministerial Association, have begun. Each week there is a short worship service at noon followed by a soup luncheon. The April 6 service will be at the Community Church, the April 13 service at the Seventh-Day Adventist Church and the April 20 service at the Peace Lutheran Church.

Postal scam

It's a scam. Dewayne Lalicker, St. Francis postmaster, reports that many people are getting e-mails supposedly sent from the U.S. Postal Service, telling them that they were missed when trying to deliver. People are to contact them with questions. Mr. Lalicker said this is a scam and that these e-mails could have a virus. The postal service emblem is being used but it is not from the U.S. Postal Service.

Hospital Guild

The Cheyenne County Hospital Guild will be meeting at 2 p.m. on Monday, April 4, at the Senior Citizens Center in St. Francis. Kristle Raile, physician assistant, will speak on the topic Medical Update. Hostesses are Helen Burnham and Dolores Wiley.

Yard Beautiful

K-State Extension, K-State Master Gardener and Bird City Century II are presenting "Yard Beautiful" programs April 5, April 7, April 12 and April 14.

Tuesday, April 5: 6:30 p.m. at Bird City Legion Hall, "Home Pests" presented by Dana Belshe; "Gardening 101" presented by Candi Douthit.

Wednesday, April 6: 6:30 p.m., commissioner's room, Cheyenne County Courthouse, "Ornamental Grasses" by Justin Lohr; "Prairie Star and Prairie Bloom Flowers" presented by Candi Douthit.

Tuesday, April 12: 6:30 p.m., commissioner's room, Cheyenne County Courthouse, "Home Pests" presented by Dana Belshe; "Worm composting" presented by Christy Rasure.

Thursday, April 14: 6:30 p.m. Bird City Legion Hall, "Worm Composting" presented by Christy Rasure; "Ornamental Grasses" presented by Justin Lohr.

PTA Talent Show

The PTA Talent Show will be held at 3 p.m. on Sunday, April 10, in the St. Francis grade school gym.

Lots of entertainment, concessions and prizes.

Ladies Night Out

Ladies Night Out set from 6:30 to 9 p.m. on Friday at Riverside Recreation. Distributors will have booths. All-you-can-eat tacos served. See ad for more information

Free cancer screening

Free cancer screening, 1:30 to 5 p.m. on Wednesday, April 13, at Dr. Melvin Dunn's office, St. Francis. See ad for more information

Fireman's Ball tickets

St. Francis Firemen will be going door to door selling Fireman's Ball tickets on Monday and Tuesday. The ball is set for April 30. See ad for more information.

Grand opening

Grand opening at Classic Rose, St. Francis, on Thursday and Friday. See ad for more information.

County Commissioners

The Cheyenne County Commissioners will meet at 8 a.m. today (Thursday).

Board of Education

The St. Francis Board of Education will meet on Thursday, April 14, at 7 p.m. in the board room at the high school.

Fair Board

The Cheyenne County Fair Board will meet at 7 p.m. on Thursday, April 7, in the commissioner's room at the courthouse.

Library Art Gallery

The St. Francis Public Library Art Gallery is featuring about 13-14 baby quilts by Patsy Rethke March 28 to April 15.

Tag deadline

All residents with last names beginning with B should purchase their car, pickup, motorcycle and motorized bike tags and pay their vehicle personal property tax by the end of the month to avoid paying a penalty.

A driver's license needs to be presented or entered on form at time of renewal.

150 Years of Kansas Quilts

The "KS150 Quilt Fest" is slated for Oct. 7 and 8 in Concordia and they are asking for any type of quilt items to show. There will also be guests speakers, demonstration and vendors, plus a dinner and quilt auction. The theme is "150 Years of Kansas Quilts" Registration is free and proceeds from the auction will benefit Neighbor to Neighbor, the women's center in Concordia. To register your quilt or for more information contact Cloud County Convention and Tourism at tourcloudcounty@yahoo.com or call Gerry Pounds, (785) 568-2442.

Veterans Affairs
Jody Tubbs, of the Kansas Commission on Veterans' Affairs, will be in St. Francis at 10:30 to 11:30 a.m. on Thursday, April 7, at the county clerk's office. People may also contact the Veteran's Affairs office in Colby any Monday, Wednesday or Friday at (785) 462-3572.

Revelations meetings

Starting March 27, the St. Francis Community Church will be conducting in-depth studies through the book of Revelations. The study will start at 6:30 p.m. at the church on 204 N. Quincy Street.

Horseman's Day

High Plains Horseman's Day is scheduled for April 16 at the Logan County Fairgrounds beginning at 8:30 a.m. Featured clinicians are Jay and Gena Jenson. There is also a Cowpokes Session for ages 7-12. For information call Thomas County Extension Office at (785) 460-4582 or online at www.thomas.ksu.edu.

Musical Easter production

Heartland Christian School, in Colby is hosting a Community Musical Easter Production. "Three Days" will be held at 7 p.m. April 14 and 15, 4 p.m. and 4 p.m. on April 16. This musical vividly captures the passion of the 72 hours our Lord spent from the cross to His resurrection. Admission is free. A free-will offering will be taken.

"The Call to Holiness"

Stewards of Hope: "The Call to Holiness" will be presented in a series of lessons at the St. Francis Catholic Church. The sessions will be held every Sunday beginning at 5 p.m. during the six weeks of Lent. The sessions will provide enrichment for the season of Lent.

Starting Smart

A "Starting Smart" program from 6 to 9 p.m. April 4 in the clinic basement in St. Francis. Topics include:
-How early experiences affect brain development.
-Emotional development and the infant brain.
-SIDS, Shaken Baby Syndrome, and the Happiest Baby program.
-The importance of Quality in Infant-Toddler Child Care.
The program is free and participants will be given a chance to win

a new baby swing. It is put on by Smart Start of Northwest Kansas and the Cheyenne County Hospital.

Incident Command Classes

Just a reminder that the Incident Command Classes (ICS) 300 class will be in Colby April 5 and 6, and Incident Command Classes 400 will be in Goodland May 3 and 4. For those that still need Incident Command Classes to be National Incident Management System (NIMS) compliant, Ryan Murray, emergency manager, would encourage them to take advantage of these opportunities close to home. He has also been informed that in order to receive anymore grant money or equipment from Homeland Security, they must be National Incident Management System compliant.

Sign up for classes at https://ks.train.org and click the correct location under the registration tab.

Wildlife banquet

The Cheyenne County Wildlife banquet will be held April 1, at the Bird City Legion hall. Doors will open at 6:30. Dinner is from 6:30 to 8 p.m. with the auction at 8:15. Tickets are available from any board members or at Bumper to Bumper or Owens True Value.

Narcotics Anonymous

Narcotics Anonymous meetings are held at 104 W Webster/Methodist Education Building on Sunday nights at 8 p.m. and Thursday nights at 7:30 p.m. Contact (785) 342-0028.

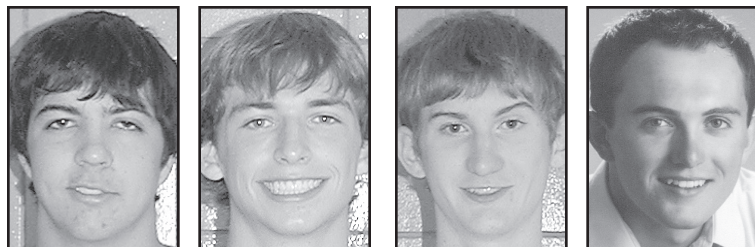
Northwest Kansas Family Shelter

Northwest Kansas Family Shelter provides 24-hour 7-day-a-week service to victims of domestic violence and sexual assault. Weekly support groups are available for women and children within the northwest Kansas area. For information, please call the toll-free number 1-800-794-4624.

Weather

Date	H	L	P
March 22	61	28	
March 23	56	18	
March 24	53	20	.01
March 25	49	31	T
March 26	50	31	
March 27	31	28	.07
March 28	40	29	T

The trace on March 28 is as of 8 a.m.
.20 as of 1:30 p.m. March 29



Students accept scholarships

Several area students accepted Fort Hays State University scholarships for the 2011-2012 academic year at a recent student recognition program in Colby.

Cheyenne County students accepting scholarships include:

Chris Walden, a 2011 Cheylin High School graduate, accepted a \$900 Academic Opportunity Award in teacher education and an \$800 Hays City Silver Academic Award.

Walden, son of Tony and Bobbie Walden, Bird City, plans to major in elementary education.

Alex Draper, a 2011 St. Francis Community High School graduate, accepted an \$800 Hays City Silver Academic Award.

Draper, the son of Robert and

Stella Draper, St. Francis, plans to major in chemistry.

Cody Killingsworth, a 2011 St. Francis Community High School graduate, accepted a \$700 Fort Hays Bronze Academic Award and a \$500 Academic Opportunity Award in mathematics and computer science.

Killingsworth, son of Ben and Vicki Killingsworth, St. Francis, plans to major in computer science.

Ryan Owens, a 2011 St. Francis Community High School graduate, accepted a \$500 Academic Opportunity Award in justice studies.

Owens, son of Patrick and Gladys Owens St. Francis, plans to major in justice studies.

School Menu

Monday

Breakfast: Cheese biscuit, sausage links, juice, cereal assortment, milk.

Lunch: sloppy joes, French fries, dill pickle spears, brownie, apple-sauce, milk.

Tuesday

Breakfast: pancakes, syrup, juice, cereal assortment, milk.

Lunch: chicken chunks, broccoli rice casserole, hot rolls, orange wedges, milk.

Wednesday

Breakfast: sausage, egg and cheese McMuffin, juice, cereal assortment, milk.

Lunch: cheeseburger on a bun with lettuce, tomato, onion, pickles, baked beans, potato chips, strawberries and bananas, milk.

Thursday

Breakfast: blueberry scones, juice, cereal assortment, milk.

Lunch: beef tacos with cheese, lettuce, tomato, salsa, sour cream, refried beans, cinnamon churros, peaches, milk.

Friday

Breakfast: scrambled eggs, toast, juice, cereal assortment, milk.

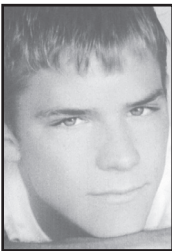
Lunch: macaroni and cheese or ravioli with meat sauce, peas, garlic toast, tropical fruit, milk.

Student accepts college scholarship

Brendan Keith Finley, son of Larry and Terri Finley, has been awarded and accepted a four-year honors College Presidential Scholarship to Pittsburg State University. To be eligible for this scholarship, Brendan was required to receive a score of at least 28 on the American College Test (ACT) and have an overall grade point average of at least 3.5 during all of his high school years.

Brendan was required to fill out a thorough application with reference letters including an essay and go through an interview process at the college.

He plans on majoring in elementary education.



Finley

2002 Ford Explorer Sport Trac #T71418\$11,400!!

1999 Crown Vic Cloth, 73K, Blue, #53870B	\$6,500
1999 F150 S/C XLT, 4x2, Topper, #79479A	\$5,500
2000 Taurus SES, 105,500 miles, #T8419B	\$4,850
2002 Ford Explorer Sport Trac, #T7141B	\$11,400
2002 Chevy K-1500, 175K, #T7166B	\$4,100
2003 Taurus SE, 150K, #52324A	\$5,195
2004 F350, Silver, high miles, #3329B	\$7,500
2004 Ford F250, S/C, 141K, #T2049B	\$17,500
2004 F350 Crew XLT, 4x4, L.Box, 112K, #T1256A	\$19,995
2004 Freestar SEL, 2nd row CPT, pwr side dr. #T7020A	\$8,775
2006 F350 Crew Lariat, 4x4, L. Box, 6.0L, #T2068C	\$23,500
2006 F550 XL Crew, AT, 4x4, Serv. Bed, #T8939A	\$27,000
2009 Taurus X E. Bauer, DVD, AWD, 15K, #T5080	\$26,500
2006 F150, S/C, XL, L.Box, AT, 4x4, 47K, White, #23451A	\$18,500
2006 F250, S/C, XLT, 6.0L, 4x4, AT, 88K, White, #T8116A	\$19,995
2006 Freestar SEL, Cloth, AT, 71KMiles, #60770A	\$10,700
2006 Acura TL, AT, Sunroof, Leather, #25830A	\$15,900
2007 F-150 XLT, 4x4, 86K, T1325A	\$24,400
2007 F150 Crew XLT, 4x4, AT, 56K Miles, #T9464	\$25,000
2008 F150 Crew XLT, 4x4, AT, 60K, #T5192B	\$27,100
2008 F250 R/C XL, 4x4, AT, L. Box, 6.4L, #T5675A	\$28,325
2008 F350, S/C, XL, 4x4, AT, 6.4L, Flatbed, 80K, #T7537A	\$27,995
2008 F250 S/C Lariat, 4x4, 6.4L, AT, 49K, #T1737A	\$35,900
2008 F250 Crew XLT, 4x4, AT, 6.4, 70K, #T3329A	\$34,200
2008 F250 R/C, XL, 4x4, AT, 6.4L, 45K, #T5676A	\$27,995
2008 F150 Crew XLT, 4x4, AT, 60K, #T51928	\$27,100
2009 F150 Crew Lariat, 4x4, 39K, #T0869A	\$32,800
2009 Flex Limited AWD, DVD, Nav., 35K Miles #T5459A	\$30,500
2010 Explorer E. Bauer, only 18K, #T5631	\$27,000
2010 F150 Crew XLT, 4x2, cloth, 6K, #T1323A	\$29,000
2010 Focus SE, AT, 4 door, 20K, #T27020	\$15,500

YOST FORD

Your one stop Ford Store for over 27 years for sales and service.
530 E. Business US Hwy. 36 St. Francis, KS 67756
800-524-9678 Scott • Dave
785-332-2188 yostford.com

Stuart's Jewelry
Our Bridal Registry
Couple registered:
Natalie Rogers & Jerry Stahlecker
Oneida Satin Aquarius Flatware & Oneida Cutlery
Bridal Shower: April 9
Wedding: May 14
Free Wrap & Delivery 785-332-2333 Gift Certificates Available
111 E. Washington • St. Francis

James E. Reeves, DPM
Podiatrist/Foot Specialist
Reconstructive Surgery
Foot & Ankle Injuries
For appointments call:
Rawlins County Health Center
785-626-3211
Wed., April 6
Cheyenne County Hospital - P.M.
210 W. 1st • 332-2104
Thurs., April 7
Atwood (a.m.) • 626-3211
Colby (p.m.)
CSMC, 175 S. Range
462-3332
CMC, 100 E. College Dr.
462-7511
Fri., April 8
CSMC at 9 a.m.

Lossing It
V O S M A L A Y H A T E D
I R E I R E N E U T I L E
O I D E M A I L R O N I N
L E A R N E R S P E R M
A N T E D Y E L A S T L Y
S T E E N A A H O U R
T I D I E S T P O M S
J A C K I N T H E P U L P
T E C H A C C E D E S
S E T S L A T H E I R
K R I S T I A R F T U R G E
W I N D F A L L P R O F
M A R I N A T R I A O T O
I C I N G B R E N T L I L
L E G G Y S A R G E L T D

American Profile
Celebrating Hometown Life
See American Profile magazine in this week's issue of
The Saint Francis Herald
(available in local area only)
"Your sponsorship could be right here."
Brought to you by The Herald
For more information contact: Allen at 785-332-3162

Make your Prom a special memory!
❖ Customized corsages and boutonnieres
❖ Keepsake bracelets with wrist corsages
❖ FREE boutonnieres if you place your order accompanied by your date.
Stop by or call soon!
The Flower Shop
105 W. Washington, St. Francis
785-332-3400

CHEYENNE COUNTY HOSPITAL 210 W. 1st • St. Francis, KS 785-332-2104
Mark Your Calendars NOW!
Cheyenne County health fair
April 11-15, 2011
Blood lab draws:
April 11, 12, 13 – St. Francis
April 12, 13 – Bird City
April 13, 14, 15 – well women & men exams
for more information; contact
Mila Bandel, RN County health @ 785-332-2381
Stacy Kaup - Clinic Manager @ 785-332-2682