



HILT & HILT LLC trucks spread organic fertilizer from the feedlot on a farmers field south of town.

Times staff photo by Karen Krien

## Co-owner purchases manure business

By Karen Krien

karen.k@nwkansas.com

Terry and Sheila Hilt, St. Francis, are the owners of Hilt and Hilt LLC, a manure spreading business. They were co-owners of a spreading business with Don Williams. When he retired at the end of year, they purchased the equip-

ment and established the Hilt and Hilt on Jan. 1.

With four spreader trucks, three wheel loaders and a dozer loader, they are able to do more than spread manure including feedlot and dairy yard cleaning and dirt work. With the dozer, they can remove trees and foundation.

They are able to spread manure on an 80-acre field or pasture in one day. Spreading manure on fields is another way of recycling. It costs a little more than chemical fertilizers but will last four years longer. The organic material has trace minerals with beneficial bacteria and insects, which breaks

down the fertilizer so plants can better utilize it.

Charges vary from the load to the hour, depending upon the job.

They have been in the business for five years and hire four people. For more information, contact Terry at 785-332-0100.

## Clinic/hospital chosen for pilot project

On June 14, the announcement that Cheyenne County Clinic and Hospital were among eight physician-led practices to participate in the Kansas Patient Centered Medical Home Initiative Pilot Project as part of the larger Patient Centered Medical Home Initiative.

With the official launch scheduled to kick off July 1, the 24-month pilot project will serve as a focal point for health care transformation in the state of Kansas.

Besides the Cheyenne County Clinic/Hospital, other selected practices are:

- American Medical Practice of Winfield/Augusta Family Practice, PA, Winfield.
- Ellsworth County Medical Center and Rural Health Clinic, Ellsworth.
- Mindi S. Garner, D.O., Chartered, Pittsburg.
- Great Plains of Sabetha, Inc. dba Sabetha Family Practice, Sabetha.
- Internal Medicine Group, PA, Lawrence.
- KU Wichita Adult Medicine,

University of Kansas School of Medicine - Wichita, Medical Practice Association, Wichita.

• Plainville Medical Clinic, Plainville.

The Patient Centered Medical Home health care delivery model can best be described as a patient-centered model designed for patients to receive the right care at the right time, lowering health care costs and improving the health care consumer's overall health across the health care system. For health care providers it can mean improved collaboration, communication, and improved patient outcomes.

This Patient Centered Medical Home model was developed in response to the Future of Family Medicine project in early 2000.

The goal was to develop a solution in response to recognized discontent among family physicians, frustrated in their ability to provide the highest quality care for their patients, in the context of health. The Kansas project kicked off Jan. 1 under the collaborative leadership of the Kansas Acad-

emy of Family Physicians, Kansas Association of Osteopathic Medicine, Kansas Chapter of the American Academy of Pediatrics, Kansas Chapter of the American College of Physicians, and the Kansas Medical Society.

In April of 2011, Blue Cross and Blue Shield of Kansas pledged payer support for the eight-selected pilots.

"Blue Cross is committed to exploring the patient-centered medical home model as we believe this model of care could well be the wave of the future for primary care," said Michael D. Atwood, M.D., chief medical officer for Blue Cross and family physician.

"If this pilot proves successful, it may provide a model for possible expansion to a wider group of primary care physicians in the near future."

Major funding for Kansas Patient Centered Medical Home Initiative is provided by the United Methodist Health Ministry Fund, a philanthropy based in Hutchinson; Sunflower Foundation: Health Care for Kansans, a Topeka-based philanthropic organization with the mission to serve as a catalyst for improving the health of Kansans; and the Kansas Health Foundation, a private philanthropy dedicated to improving the health of all Kansans.



Schoenrogge

Northrup

Figgins

Ketzner

## Four seniors vie for title of Young Miss

By Karen Krien

karen.k@nwkansas.com

The Cheyenne County Young Miss program will be held on Saturday starting at 7 p.m. in the St. Francis high school auditorium. The theme for the program is "Winter Wonderland."

Four seniors, Christina Schoenrogge, Caitlin Northrup, Kaitlin Figgins and Jacquelyn Ketzner, will be vying for the title of Cheyenne County Young Miss.

These are four very vivacious, young ladies," said Vickie Cress, one of the coordinators.

A grueling week of practice started Sunday. There will be special meals and practice interviews.

On Saturday, a parade down Washington Street will be held at 2 p.m.

Last year's Young Miss, Mikaela Grace, will be entertaining the audience with several numbers during evening program.

Along with the individual talent numbers performed by the contestants, the girls will be dressed in evening gowns for the "Poise and Elegance" category and will be performing for the "Endurance" category.

The program enables incoming senior girls a chance to develop themselves in the areas of scholastic, interviews, talent, physical fitness and poise.

A short bio of each of the candidates follows:

**Kaitlin Figgins**

Kaitlin plans to attend Colby Community College where she

will major in massage therapy and earn a reflexology license. Her goal is to establish her own business.

For her talent number, Kaitlin will sing "Call of Jesus," by Nicole Mullen.

Kaitlin is the daughter of Lee-anna Windell, Bird City, and Brad Figgins, St. Francis.

**Jacquelyn Ketzner**

Jacquelyn plans to attend the University of Kansas and join the KU dance team along with studying.

For her talent number, Jacquelyn will sing "Doll in a Music Box," from "Chitty Chitty Bang Bang."

Jacquelyn is the daughter of Noel and Tabetha Ketzner, Bird City.

**Caitlin Northrup**

Caitlin plans to attend Fort Hays State University for two years, then transfer to Kansas State University where she will study journalistic photography.

For her talent number, Caitlin will give a patriotic poem "A Visitor From The Past."

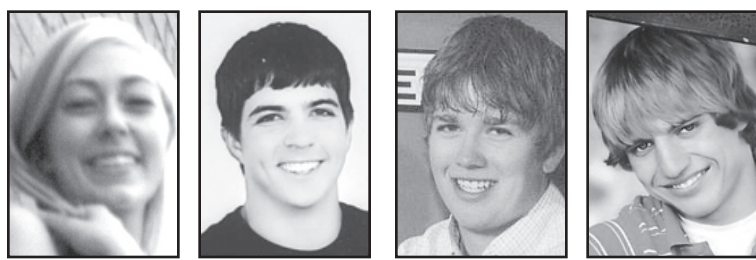
Caitlin is the daughter of Aimee Northrup and David Northrup, both of St. Francis.

**Christina Schoenrogge**

Christina plans to attend the University of Washington to study neurology.

For her talent number, Christina plans to have a comedy skit, "The Advert of Advertising."

Christina is the daughter of Craig and Juciara Schoenrogge, St. Francis



Churchwell

Draper

Lampe

Sherlock

## Four area students accept scholarships

Four area students have accepted scholarships to attend Fort Hays State University for the 2011-2012 academic year.

Whitney Churchwell, a 2011 Cheylin High School graduate, accepted an \$800 Hays City Silver Academic Award.

Churchwell is the daughter of Eric and Janice Churchwell, Bird City.

Ryan Draper, a 2011 St. Francis Community High School graduate, accepted an \$800 Hays City Silver Academic Award and a \$500 Academic Opportunity Award in chemistry.

Draper, son of Robert and Stella Draper, St. Francis, plans to major in chemistry.

Brett Lampe, a 2011 St. Francis Community High School graduate, accepted a \$700 Fort Hays Bronze Academic Award.

Lampe, son of Rod and Carla Lampe, St. Francis, plans to major in health and human performance.

Cody Sherlock, a 2011 St. Francis Community High School graduate, accepted an \$800 Hays City Silver Academic Award.

Sherlock, son of Gilbert and Cindy Sherlock, St. Francis, plans to major in chemistry.

## Deadlines !! Deadlines

We know how all of us hate deadlines — But in order for us to do our best and try to keep you happy, please note below The Saint Francis Herald and Bird City Times deadlines.

Articles and Ad are due Monday at 5 p.m. for that week's paper

The Saint Francis Herald  
Bird City Times



# Light the way to a cure

Keep the fire of hope burning by purchasing a luminaria candle in memory of someone lost to cancer, in honor of someone still fighting, or in special recognition of someone who has beaten this dreaded disease.



## RELAY FOR LIFE OF CHEYENNE COUNTY

Friday & Saturday - July 22 - 23

7 p.m. - 7 a.m.

AT SAWHILL PARK IN ST. FRANCIS

Complete this form and send it along with your donation to:  
The Saint Francis Herald, P.O. Box 1050, Saint Francis, Ks. 67756

Name: \_\_\_\_\_  
Address: \_\_\_\_\_  
City: \_\_\_\_\_  
Daytime Phone: \_\_\_\_\_

Please join us for the luminaria ceremony at 9 p.m. or dark

\$10.00 per luminaria please!

In honor of  In memory of

\_\_\_\_\_

In honor of  In memory of

\_\_\_\_\_

In honor of  In memory of

\_\_\_\_\_

TOTAL ENCLOSED \_\_\_\_\_

Makes Checks Payable To: The American Cancer Society

