

## Church planning movie night

The St. Francis United Methodist Church will be holding a family movie night at the church building 512 S. Scott. Everyone is welcome to attend.

At 7 p.m. on Friday, Aug. 17, *Windrunner* will be the first movie shown. There is no charge.

"We are encouraging families to spend some time together and engage in conversation about lessons learned from the movie," said Rev. Warren Cico.

The church has about 15 movies that are produced by Feature Films for Families. The aim of the movies is to strengthen traditional values through entertainment. Each movie includes a parents' guide for family discussions.

*Windrunner* features Russell Means, Jason Wiles, Margot Kidder, Amanda Peterson, Jake Busey and Bruce Weitz. When Greg Cima moves to Kanab, Nev., from Las Vegas with his mother and sister, the school kids



look down their noses at him because his father is a convict in a nearby prison. Greg hopes to prove himself on the football field, but he is cut from the team because his father is a criminal. Surprisingly, a stranger comes to his aid to help him achieve his dreams. He learns to forgive and accept his father.

There will be refreshments available for a nominal fee from the Methodist Youth Fellowship.

The movie scheduled for September is *Possums*. *Alan & Naomi* is scheduled for October.

## Application closing date set for Sept. 1

Sept. 1 is the application closing date for certain crops under the Noninsured Crop Disaster Assistance Program (NAP). Crops eligible for this program's benefits are limited to those not insurable in the county and are produced for food or fiber.

Sept. 1 is the final date to pay the applicable service fee and obtain Noninsured Crop Disaster Assistance Program coverage for Triticale, Barley, Rye and Wheat for hay or grazing and triticale and rye for grain as well, said Dennis R Mote, county executive director for the Cheyenne County Farm Service Agency. Crops eligible for the benefits are limited to those not insurable "downtown" in the county, such as forage crops for livestock (mechanically harvested or grazed). Continuous crop wheat planted with the intention of harvesting as grain is not eligible for Non-insured Crop Disaster Assistance Program.

The administrative service fee is \$250 per crop per administrative county not to exceed \$750

per producer per administrative county and a \$1875 maximum fee for multi-county producers. Interested producers must pay the fee and file form CCC-471, Application for Coverage, by the application closing deadline.

This coverage entitles eligible producers to a payment of 55 percent of an average market price for the commodity if a natural disaster caused a 50 percent production loss or greater of an eligible crop.

In the unfortunate event that a producer does suffer a loss on their particular crop, a form CCC-576, Notice of Loss, must be filed with Farm Service Agency within 15-calendar days after the disaster occurrence, or the date the loss becomes apparent to the producer.

Interested producers should contact the Farm Service office at 785-332-2183 prior to the Sept. 1 application closing date to obtain Noninsured Crop Disaster Assistance Program coverage on the above crops.

### Death notice

A celebration of life will be held for Marian L. Miller, 84, at 4 p.m. Saturday, Aug. 18, at the St. Francis United Methodist Church. She died July 17, 2012, at Cedar Living Center in Oberlin.

### School board meeting

The St. Francis Board of Education will meet at 7 p.m. on Thursday, Aug. 9, in the board room in the high school.

### Electronic books

The St. Francis Library and Northwest Kansas Library System will be offering training for those interested in learning how things work with the 3M app, the One Click digital managers, I-Pads, Nook, Kindle Fire and other devices.

Please call the library at 785-332-3292 for more information.

### Methodist Family Movie night

Movie night will be held at the United Methodist Church, St. Francis, starting at 7 p.m. on Friday, Aug. 17. The movie is *Windrunner*. See related article for more information.

### St. Francis website

Check out the updated St. Francis website at [www.stfranciskansas.com](http://www.stfranciskansas.com).

### Sports physicals

Free sports physical given at Poling Chiropractic. The last day for the physicals is Friday. Call 785-332-3105.

### Methodist Church Saturday service

The United Methodist Church will hold a Saturday service starting at 7 p.m. on Aug. 11.

### Free popcorn at theater

The Cheyenne Theater Committee is asking, that the first weekend of the month, those attending the movie bring a canned food donation for the Food Pantry and they will receive a free sack of popcorn. Show time is 8 p.m.

### Tornado Safety drills

The Cheyenne County Communications Center will conduct monthly siren testing starting the second Wednesday in April at 9 a.m. The testing will continue

through the end of September.

### Men's breakfast

Men's breakfast will held at 8 a.m. on Saturday, Aug. 18, at the United Methodist Church.

### Grief Support Group

The Grief Support Group will meet every second and fourth Mondays at 2 p.m. Meeting place is the Immanuel United Methodist Church, 116 E. Fourth, Bird City. For more information, call 785-734-2739.

The group is a confidential

support to all who have experienced the loss of a loved one in a safe place of mutual help and comfort.

### Emergency number

The new phone number for Cheyenne County Communications Center (Dispatch) for non-emergency calls: 785-332-8822, Dial 9-1-1 for an emergency.

### Narcotics Anonymous

Narcotics Anonymous meetings are held at 104 W Webster/ Methodist Education Building

on Thursday nights at 7:30 p.m. Contact (785) 342-0028.

### Northwest Kansas Family Shelter

Northwest Kansas Family Shelter provides 24-hour-7 day-a-week service to victims of domestic violence and sexual assault. Weekly support groups are available for women and children within the northwest Kansas area. For information or in need of assistance, please call the toll-free number 1-800-794-4624.

## 4-H'ers place at area show

Two Cheyenne County youth were winners at the Tri-State Royal Livestock Show on Saturday, Aug. 4, held at the Sherman County Fairgrounds.

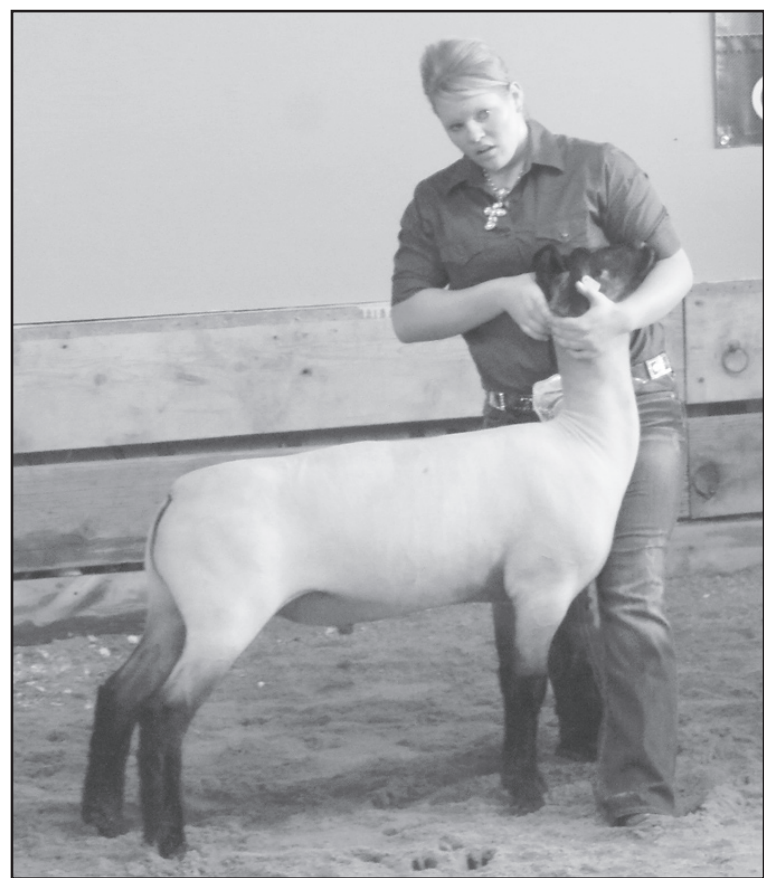
Jandy Dunn was named grand champion sheep showman besting 17 county champion sheep showman from the tri-state area. She won a belt buckle for her efforts.

She and her lamb "Bentley" went on to claim the grand champion market lamb title and a belt buckle. Jandy said it was awesome to win top honors at the "Best of the Best" livestock show.

Shadryon Blanka's goat was named grand champion in the breeding goat division.

The Tri-State Royal Livestock Show is open to grand champion livestock (beef, sheep, swine and goat) and the champion showmanship winner from the participant's county fair. Winners from Kansas, Nebraska and Colorado competed in the show.

Jandy is the daughter of Jim and Jeanne Dunn of St. Francis. Shadryon is the son of Shawn and Shawna Blanka, St. Francis.



JANDY DUNN shows her lamb at the Tri-State Royal Livestock Show. Photo courtesy of Jeanne Dunn

## Student News

Aubree Schlepp of St. Francis was named to the second semester honors dean's list for the 2011-2012 academic year at Stephens College. Students who attain honors must have finished at least the equivalent of four full courses (12 hours) and achieved a grade point

average of 3.6 to 3.79 on a scale of 4.0.

Schlepp is a freshman in Marketing: Public Relations and Advertising major. She is the daughter of Spencer and Lisa Schlepp, St. Francis.



**WE'D LOVE TO TEACH YOUR CHILD!**  
ABC Preschool will be accepting enrollment for the 2012-2013 school year.  
**When:** Wednesday, Aug. 15  
**Time:** 3:30 - 5:30 p.m.  
**Where:** United Methodist Education Building  
104 W. Webster • St. Francis, KS  
Please bring your child's immunization records.  
New students need to have a physical, available at Cheyenne Clinic  
For more info, please contact Amy (785) 332-3954

**James E. Reeves, DPM**  
Podiatrist/Foot Specialist  
Reconstructive Surgery  
Foot & Ankle Injuries  
For appointments call:  
**Rawlins County Health Center**  
785-626-3211  
**Wed., Aug. 8**  
Cheyenne County Hospital - P.M.  
210 W. 1st • 785-332-2104  
**Thurs., Aug. 9**  
Atwood (a.m.) • 626-3211  
Colby (p.m.)  
CSMC, 175 S. Range  
785-462-3332  
CMC, 100 E. College Dr.  
785-462-7511  
**Fri., Aug. 10**  
CSMC at 9 a.m.

**Specials**  
**Sunday**  
Roast Beef  
Breakfast every day until 10:30  
Lunch  
Sunday - Wednesday  
11 a.m. to 1:30 p.m.  
Cash discount for fuels  
Check us out on Facebook  
**Majestic Service & Truck Stop**  
510 West Highway 36  
St. Francis, Ks.  
785.332.2905

**YOST**  
Ford  
Scott Knebel Brent Rueb  
530 E. Business US Hwy. 36 St. Francis, KS 67756  
800-524-9678 785-332-2188 yostford.com  
**Fair Deals Continue!**  
1983 GMC Suburban, 4x4, good hunting rig \$2,495  
1998 Chevy Tahoe 4-WD, #T0869C \$4,900  
1999 Ford F-150 Lariat Super Cab \$6,250  
2002 Ford Ranger 4x4, S-cab, 4x4, V-6, #T9176B \$8,250  
2003 Buick Lesabre, Leather, #T8153 \$5,600  
2004 Volkswagon Touareg, low miles, #T1726C \$16,825  
2005 Ford F-250 XLT, Super Cab, #T1920A \$16,500  
2006 Ford Freestyle, Leather, 7-pass, #45384B \$9,995  
2006 Ford Crown Vic Interceptor pkg., #T4374M \$5,900  
2006 Ford F-150, 4x4 pkg., #T4374B \$15,900  
2006 Ford, S/C, 4x4, long box, Biege Cloth, #T3241 \$14,500  
2007 Chevy K-2500 HD, gas, Crew, L. box \$24,995  
2007 Ford F-150 King Ranch, Crew Cab, 69K, #T6497B \$27,000  
2007 GMC Yukon XL, loaded, #T5284A \$25,995  
2007 Honda Pilot, Fully loaded, #T9712A \$20,250  
2008 Dodge 2500 Diesel, great shape \$31,995  
2008 Mercury Mariner, AWD, Leather, #27020A \$13,500  
2009 Lincoln MKZ, Super low miles, #85233A \$25,250  
2009 Cadillac STS, loaded, #T2882A \$28,250  
2009 Nissan Altima, loaded, #22328A \$16,800  
2009 Ford F-150 XL Work Truck pkg. #T7767A \$17,900  
2010 F-250 Super Cab Lariat, 4x4, 6.4, #50842A \$44,000  
2010 Chevy Cobalt LT, #T1798B \$13,500  
2010 Buick LaCross, T7062B \$24,495  
2011 Ford Edge Limited, #T8768A \$30,750  
2011 Chevy Impala LT, 34K, #06614B \$21,000  
View all of our inventory at [www.yostford.com](http://www.yostford.com)

**SHOWTIME: 8 p.m. 1 hr. 34 min.**  
**Ice Age: Continental Drift 3D**  
Aug. 10, 11 & 12  
Ray Romano, John Leguizamo, Denis Leary  
Animated, Comedy, Sequel  
PG for mild rude humor and action/peril  
**CHEYENNE THEATER** St. Francis, KS 785-332-2747  
Children 12 & Under: \$4 All Others: \$6  
3D Movies: Children 12 & Under \$5 All Others: \$7

**Frontier Medical Rejuvenation**  
IPL Hair Removal  
IPL Photo Facials  
Acne Treatments  
Laser Spider Vein Treatments  
Dr. Rebecca Allard  
607 South Benton St. (785) 772-1906  
St. Francis, Kansas 67756 www.frontier-med.com

**CHEYENNE COUNTY HOSPITAL** 210 W. 1st • St. Francis, KS 785-332-2104  
Cheyenne County Hospital "The Shining Star of Rural Healthcare!"  
**"Best Beginnings"**  
Lactation Support at Cheyenne County Hospital and Clinic  
**Lori Raile, RN BSN**  
Certified Breastfeeding Educator  
10 years of Lactation and Obstetric Nursing Experience  
**Dana Rose, CNA CBE**  
Certified Breastfeeding Educator  
Available to assist you with:  
Prenatal Education  
General Breastfeeding assistance and Troubleshooting  
Purchasing of Breastfeeding supplies/equipment  
Breastfeeding when returning to the workplace  
Call 785-332-2104 to speak with us!

Getting Duped  
TARS I SARAH CPL  
UNION AMOCO HIE  
TOMT WOTIMES OPA  
UNSOAKED STAPES  
RID EXERT  
DENUDE PARSEC  
IRON S RAVES HMS  
BIRD COVEN POOP  
SEE WAVER CIERA  
PAIRED PONDER  
AGENT DEN  
FRANC S PASSABLE  
TOT HUSH DOUBLED  
EVE EELED LEONE  
RED STONY TETON

**American Profile**  
Celebrating Hometown Life  
See American Profile magazine in this week's issue of  
**The Saint Francis Herald**  
(available in local area only)  
Brought to you by The Herald  
"Your sponsorship could be right here."  
For more information contact: **Tim Burr** at 785-332-3162