

# Manure and dead animal management workshop set

There are two very certain facts about raising animals. They all excrete manure and there will be some death loss. A person can use a little manure in the family garden, but getting rid of the rest can be challenging. There are several regulations about transporting manure, particularly if it goes to cropland that does not belong to you.

Dealing with the carcasses is a little more difficult. Increasing regulations and costs have virtually eliminated the traditional 'dead animal trucks.' Leaving the carcass to decay and be eaten by scavengers is not a good management method either.

If you have these concerns, then plan to attend a Manure and Dead Animal Management workshop on

Thursday, March 14. The workshop will be held at the First Presbyterian Church in Wray from 1 to 3:30 p.m.

Another year of drought and livestock feeding in confined areas will certainly add to the manure supply for livestock owners. Colorado State University professor Jessica Davis will share information that livestock operators should know about manure storage and transportation regulations. She will then share ideas about what operators can do with the manure supply they have on hand and answer questions.

Livestock Mortality Composting for Large and Small Operations in the semi-arid west was a multi-state multi-agency project to help

livestock operators deal with dead animals. The resulting booklet has a step-by-step guide to composting dead animals with clear illustrations and pictures. The university's extension personnel, Michael Fisher and John Deering were part of the project. They will walk attendees through the composting process and answer any questions.

The First Presbyterian Church is on the corner of Birch and 4th Streets in Wray. Take Hwy 34 east of downtown two blocks to Birch Street and turn south. No registration is required. For more information, contact the Yuma County Conservation District at 970-332-3173 ext. 3. There is an answering machine so you can call anytime.



COMMUNITY GARDEN Club members Jason Padgett and Sam Luncsford investigate the Urban beehives at the Growing Power Urban Community Food Center in Milwaukee,

## Club members attend growing power workshop in Wisconsin

Two community garden club members, Jason Padgett and Sam Luncsford, on Jan 11 through 13, attended the Growing Power workshop, "Building Your Community Food System from the Ground Up" in Milwaukee, Wis. They both received schol-

arships that covered their tuition to classes and the United Methodist Thrift Store donated money to assist with travel expenses. They were accompanied by Bernadette Luncsford, district conservationist with National Resources Conservation Service.

The three toured the Urban Food System that has established on two acres in the middle of the city. This urban farm provides fresh fish, mushrooms, eggs, honey, goat milk and vegetables year round to city residents. The St Francis Community Garden Club has future goals to have such a system here in St Francis, Mrs. Luncsford said, with local food at a reasonable cost that doesn't include transportation fees.

The average vegetable in the U.S. travels 1,400 miles from grower to plate and incurs cost for every mile it must travel. A local food system reduces a lot of that cost and provides fresher, healthier food than that which takes days or weeks to come across the continent.

The St Francis Community Garden provides produce to its volunteers then the excess is donated to the food pantry, the Good Sam Village and the schools. A community working together can reduce its food costs significantly - and that means an increase in lifestyle and health.

The Community Garden Club hopes to send at least six more people to the workshop this year. If you are interested in being a part of the Community Garden, Mrs. Luncsford said, please contact a member today or if you prefer to just donate to the Garden Club then checks can be made payable to the Cheyenne County Development Committee with "Garden Club" in the memo section.

## Development grants available

U.S. Department of Agriculture's Natural Resources Conservation Service (NRCS) will provide up to \$25 million in grants to help develop and demonstrate cutting-edge ideas to improve conservation on private lands.

Conservation Innovation Grants (CIG) are available for state and local governments, federally recognized Indian Tribes, non-governmental and educational organizations, private businesses, and individuals. CIG applications are due Friday, March 22.

Of particular interest are applications for innovative demonstration partnerships on energy conservation, nutrient management, soil health, wildlife habitat, and adaptive management.

"These grants are critical for developing and demonstrating out-of-the-box ideas for conservation on America's private lands and strengthening rural communities," NRCS State Conservationist Eric B. Banks said. "They inspire creative problem-solving that boosts the production of our farmers and ranchers and ultimately improves our water, air, and soil."

NRCS has offered this grant program since 2004, investing in ways to demonstrate and transfer efficient and environmentally friendly farming and ranching. In the past eight years, the grants have helped develop trading markets for water qual-

ity and have shown precise ways to farm and use fertilizer, water, and energy more efficiently.

The grants are funded through the Environmental Quality Incentives Program and are awarded through a competitive process.

At least 50 percent of the total cost of CIG projects must come from

non-federal matching funds, including cash and in-kind contributions provided by the grant recipient.

For more on this grant opportunity, visit <http://go.usa.gov/4Kvx>. To apply electronically, visit <http://www.grants.gov> or contact a local NRCS office.

## Student Essay

### Memories on the Field

By Joel Hill  
Eighth grade

Some of my favorite memories come from playing football my eighth grade year. When I look back at my performances, I smile since I remember them like yesterday.

Every time the games go through my mind, the details flood in. For instance, the game against Goodland was one of my best performances. During the game, the only thoughts going through my mind was what to do on the next play. I focused on everything I was doing. That is why I had an amazing performance.

Playing running back is where most of my spectacular memories are from. During the games, I could run over anyone who tried to tackle me. My favorite thing to do was score a touchdown. I loved that feeling of scoring a touchdown and listening to the crowd go wild.

On the other hand, playing line-

backer on defense was just as fun. When I tackled someone, the hit was loud and adrenaline started pumping fast through my body. The feeling of making a perfect performance was fantastic.

During the football season, I loved to help the seventh graders who had just starting playing football for the first time in junior high. Teaching them those skills I knew helped them perform to their greatest ability. If we all knew great skills, I knew we had a chance at being the team that dominated our league. Playing football brought us together. We made one big family on the football field.

To me, football was all about making memories at what I loved to do. Are there memories that will stick with you forever?

## Student Essay

### The Concert

By Makayla Rogers  
Eighth grade

Do you have an idol? Someone who inspires you? I do, and that person is Justin Bieber.

On July 8th, 2010, I went to a Justin Bieber concert with my mom, my friend Hanna, and her mom Jill. The concert was in Broomfield, Colorado, at 7:00 P.M. so we spent the day in Denver.

Before the concert, we went to our hotel and one of the desk workers was a Bieber fan himself. He told us Justin Bieber's crew would be staying at our hotel, but they decided to bring tour buses for them. It was still exciting to think they could have been in the same hotel as us.

It was seven o'clock. As we approached our seats, the girls were already screaming and singing. Finally after waiting for a few minutes, Justin came on stage.

Within those two seconds he was on stage, I went deaf to the screaming which surrounded me. Justin sang about every song from his first two albums. The concert was so fun and he was even better live.

After the concert, the girls were still screaming and several were even crying. We were walking after the concert trying to catch a taxi. As we were walking, we saw Jessica Jarrell, a singer, that was singing with Justin Bieber earlier! Hanna and I got our pictures taken with her. She signed my book and Hanna's new sweat pants. She was very kind and acted just like a regular teenager.

It was an awesome experience and I'd love to go to another Justin Bieber concert any day. Have you ever been to a great concert that left you with memories?

## Raile Gelbvieh & Balancer Bull Sale

Burlington Livestock Exchange, Burlington, Co • March 14, 2013 12:30 MST

### Selling 50 Balancer Spring & Fall Bulls

The Denver NWSS Bulls Sell (Including our Futurity Entry)

#### 6 Registered Balancer Open Heifers

- 100% Black (80% Homozygous Black)
- Igenity Profiled
- PI negative
- Trich Tested
- Several Homozygous Polled
- Sale will be broadcast on DV Auction



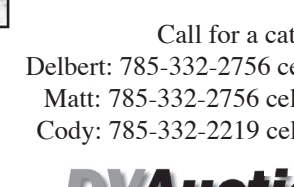
DMRS The Factor 297Z



RHRG Mr Premium 278Z



DMRS Mr Total 2125Z



DMRS Mr Total 2125Z



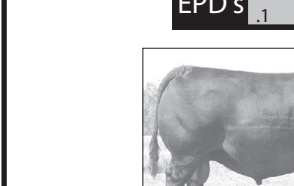
DMRS Mr Total 2125Z



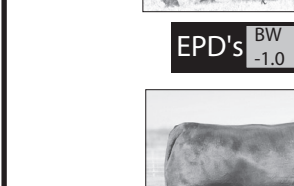
DMRS Mr Total 2125Z



DMRS Mr Total 2125Z



DMRS Mr Total 2125Z



DMRS Mr Total 2125Z



DMRS Mr Total 2125Z

Call for a catalog  
Delbert: 785-332-2756 cell 785-332-4347  
Matt: 785-332-2756 cell 785-332-8399  
Cody: 785-332-2219 cell 785-332-6089

Website: [railegelbvieh.com](http://railegelbvieh.com)  
Email: [dmraile@railegelbvieh.com](mailto:dmraile@railegelbvieh.com)

Cody & Samantha Raile  
750 Road U  
St. Francis, KS 67756

**DVAuction** Broadcasting Real-time Auctions

## RICK NEMETH

200 18 Mo. Old Registered Angus Bulls for Sale on Farm

75% of Bulls Are AI Sired

60 Bulls are ET Calves

Ludell, KS • (785) 626-4309 or (785) 322-5505

LOCATION: 13 miles northeast of Atwood, KS

Sale bulls are in top 3% of breed for both weaning and yearling weights. • Free Delivery & Boarding

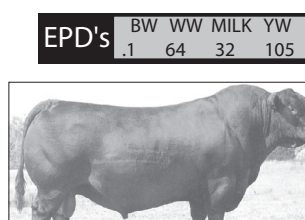
2.3 58 103 average EPD's on Nemeth sale bulls.

2.6 36 18 66 EPD's for current sires of the Angus breed.

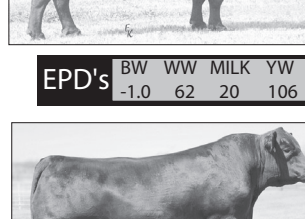


### SAV GRAND PRIX

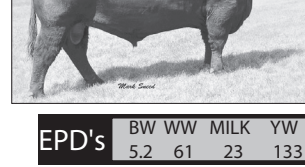
SITZTRAVLER8180  
SAVFINALANSWER0035  
SAV EMULOUS 8145  
BOYD NEW DAY 8005  
SAVBLACKCAP MAY 7306  
SAVBLACKCAP MAY 4136



EPD's BW WW MILK YW  
.1 64 32 105



EPD's BW WW MILK YW  
-1.0 62 20 106



EPD's BW WW MILK YW  
5.2 61 23 133

### FINAL ANSWER

G D A TRAVELER 71  
SITZTRAVLER 8180  
SITZVERELDAENTENSE1137  
BONVIEW BANDO 598  
SAV EMULOUS 8145  
SAV SKY EMULOUS 2124

### NICHOLS STOUT

NICHOLSCOMMITMENTK11  
NICHOLSCOMMITMENTM380  
NICHOLBLACKHERESSH295  
NICHOLSBUSHWACKERK161  
NICHOLS LULA N77  
NICHOLS LULA K387

## Partnering To Bring Medical Specialists To St. Francis

### St. Francis Outreach Clinic Schedule

Cheyenne County Hospital  
210 W. 1st Street - St. Francis

#### Mobile Mammography

Every Four Weeks

(785) 332-2104

#### Cardiology Monthly

**NE CALL**  
1-855-HAYSMED

In partnership with Cheyenne County Hospital  
[haysmed.com](http://haysmed.com)

**YOST**



530 E. Business US Hwy. 36 St. Francis, KS 67756

800-524-9678 785-332-2188 [yostford.com](http://yostford.com)

Sales Manager — Brent Rueb

Like us on Facebook  
Yost Ford



**YOST FORD**

**FORD T**



### Vehicle of the Week

2010 F-250 Super Duty Lariat, Loaded, Crew Cab, Local One Owner, 44,000 miles.

Check out the new Website New Look, New Design, Easier to use! All inventory now listed on facebook and youtube.

The New [yostford.com](http://yostford.com) at the New Yost Ford