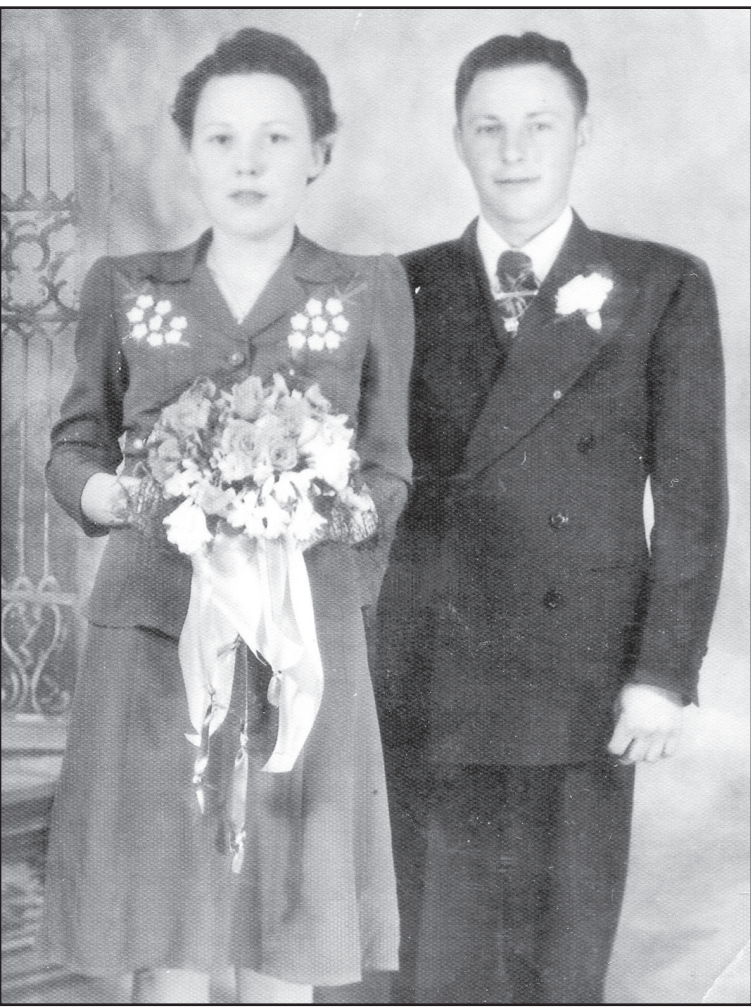


Bulletin Board



Bernice and Ruben Bandel

Anniversary held

Ruben and Bernice Bandel are celebrating their 70th wedding anniversary on Thursday, Feb. 27. Their children are asking

that people congratulate them by sending cards to them at 315 Village Road, Apt. 12, St. Francis, KS 67756.

School Menu

Feb 17 - Feb 21

Junior-senior high menu

Monday

NO SCHOOL
Breakfast: Oatmeal breakfast round, yogurt cup, cereal fruit juice.

Tuesday

Lunch: Hawaiian chicken wrap, lettuce and tomato, seasoned rice, apple wedges with caramel.

Wednesday

Breakfast: Breakfast casserole with salsa, cereal, fruit juice.

Lunch: Spaghetti with meat sauce, green beans, french garlic sticks, tossed salad, sherbet cup.

Thursday

Breakfast: French toast sticks with syrup, cereal, fruit juice.
Lunch: Taco salad with edible bowl, mexican corn, cinnamon puff, pineapple tidbits.

Friday

Breakfast: Breakfast pizza, cereal, fruit juice.

Lunch: Chicken and noodles, mashed potatoes, carrots and celery, roll and jelly, orange wedges.

Grade school menu

Monday

NO SCHOOL
Breakfast: Biscuits and gravy, applesauce.

Tuesday

Lunch: Chicken nuggets, mashed potatoes and gravy, corn, strawberries and bananas, roll.

Wednesday

Breakfast: Coffee cake, pineapple.

Lunch: Chili, corn chips, celery and carrots with peanut butter, cinnamon roll, oranges.

Thursday

Breakfast: Cheese omelets, sausage links, fruit cup.

Lunch: Baked ham, mashed potatoes and gravy, green beans, applesauce, biscuit.

Friday

Breakfast: French toast with syrup, oranges.

Lunch: Mac and cheese, meatballs, peas and carrots, roll.

From the kitchen: Menus are subject to change.

Singer Frankie Valens

Singer Frankie Valens will be appearing at the St. Francis Community High School auditorium on Thursday, Feb. 13, at 7 p.m. There will be a free-will offering, sponsored by the Solid Rock Baptist Church. 07

Singing Valentine telegram

SFCHS vocal, band and advanced music classes will be delivering singing valentine telegrams in St. Francis.

It includes a song, balloon and candy for the cost of \$5. Forms will be available from any band, vocal, or advanced music student, at the high school office, or area businesses. 07

85th birthday

ErvaGene DeAragon will celebrate her 85th birthday on Wednesday, Feb. 12. Her family is requesting cards be sent to her at 506 E. Second Street, St. Francis, KS 67756. 06

Library closed

The St. Francis Community Library will be closed on Monday, Feb. 17, for President's Day.

Library display

The St. Francis Library will have a display of Dee Epperson's postcards from Feb. 10 to Feb. 28.

Banquet tickets

Cheyenne County Wildlife banquet tickets are available at Owens True Value, Frontier Arms, Bumper To Bumper, Republican Valley Auto, or any board member. The banquet is March 29 at the Legion hall in Bird City. This year's drawing will be for an AR10 and a Winchester 243 caliber. 07

Blood drive

The American Red Cross Blood Drive will be held starting at 9 a.m. on Thursday, Feb. 13, at the Peace Lutheran Church, St. Francis. 06

Sod house stories

Do you or a member of your family have memories of growing up in a sod house?

The Herald is looking for stories from Cheyenne County residents that grew up during the early 20th century in a sod house.

Please send your story to PO Box 1050, St. Francis, KS 67756. Or you can call and tell Amanda Miller your story so she can write an article telling about your experience. Please call 785-332-3162 to tell us your story. Everyone that shares their story will be featured in the paper! 04

Grief Support Group

The Grief Support Group will continue to meet every second and fourth Mondays at 2 p.m. Meeting place is the Immanuel United Methodist Church, 116 E. Fourth, Bird



Millie Glasco

Woman celebrates birthday

Lynn and Candy Glasco are asking everyone to participate in a card shower for Millie Glasco's 89th birthday on Monday, Feb. 17. Cards can be sent to her at P.O. Box 331, Bird City, KS 67731.



Ada Siegfried

Birthday celebrated

The children of Ada Siegfried are requesting a card shower for their mother to celebrate her birthday. Ada will be 95 on Saturday, Feb. 22. Cards may be sent to Ada Siegfried, c/o Shelly Klie, P.O. Box 843, St. Francis, KS 67756.

Student News

St. Francis Community High School 2011 graduate Aubree Schlepp was named to the Stephens College first semester honor dean's list for the 2013-2014 academic year.

Students who attain honors must have finished 12 hours with a grade point average of 3.6 to 3.79 on a scale of 4.0.

Aubree is the daughter of Spencer and Lisa Schlepp of St. Francis.

St. Francis Community High School 2011 graduate Adam Guthmiller was named to the Sterling College fall semester Dean's Honor Roll for the 2013-2014 academic year.

To earn this honor, students must have a grade point average of 3.50 or better in at least 12 credits of residential work.

Adam is the son of John and Kristi Guthmiller, St. Francis.



SHOWTIME: 7:30 p.m. 1 hrs. 39 min.

Ride Along PG-13
Feb. 14-16
When a fast-talking guy joins his girlfriend's brother—a hot-tempered cop—to patrol the streets of Atlanta, he gets entangled in the officer's latest case. Now, in order to prove that he deserves his future bride, he must survive the most insane 24 hours of his life.

Starring: Ice Cube, Kevin Hart and Tika Sumpter

CHEYENNE THEATER St. Francis, KS 785-332-2747

Children 12 & Under: \$4 All Others: \$6
3D Movies: Children 12 & Under \$6 All Others: \$8

YOST 

800-524-9678 785-332-2188 yostford.com
Sales Manager - Brent Rueb • Rell Zimbelman - Sales Agent

Use your Smart Phone to scan our Bar Code for complete inventory

Like us on Facebook Yost Ford 



It's Ford Truck Month!
All through February -
Get Ford Truck Month Deals on F150s and F250s

- Increased Rebates
- Extended Warranties


Come in - Make Your Best Deal!
We need your good used trade-in

The New yostford.com
at the New Yost Ford

Thank You

Our sincere thanks to those who helped Alice Isernhagen during her final two stays in the Cheyenne County Hospital. Dr. Mary Beth Miller's thoughtful counsel and wise expertise was helpful and the hospital staff gave support and gentle care to Alice and to us. We appreciate the wonderful Good Samaritan Village "family" of staff and volunteers who provided a home, daily care and quality of life in Alice's last years—with special thanks to former activity director, Cathy Loop and to Alice's dear friend and roommate, Mildred Burr. We thank John Knodel for his professional work, Pr. Randy Nelson for his pastoral care and funeral service, Carol Wolters, musicians Darlene Feikert, Neala Carmichael, and Chad Miller, and the Peace Lutheran Women for serving lunch. Thank you to everyone for the cards, calls, visits, food, flowers, memorials, gifts, memories, and for braving the cold to attend the service. Alice was blessed to be a part of this community.

The family of Alice Isernhagen



CHEYENNE COUNTY HOSPITAL 210 W. 1st • St. Francis, KS 785-332-2104

Diabetes Education Management Meeting
Wednesday, Feb. 19, 2014
1:30 p.m.
Cheyenne County Clinic Basement

Presenter - Kirsten Angell, Dietitian & Diabetes Educator: Topic - Healthy Interactions with Diabetes Part II

For more information contact Mila Bandel, RN - County Health Nurse 785-332-2381

It is not too late to get your influenza vaccine for this flu season!

Tri-State Antique Engine & Thresher Show ANNUAL MEETING
Saturday, March 1
10 a.m.
Bird City Senior Center
12-noon: Ham, Beans and Corn Bread lunch



This Year's Show Dates: July 31 & Aug. 1-2

James E. Reeves, DPM
Podiatrist/Foot Specialist
Reconstructive Surgery
Foot & Ankle Injuries

For appointments call:
Rawlins County Health Center
785-626-3211

Wed., Feb, 26
Cheyenne County Hospital - P.M.
210 W. 1st • 785-332-2104

Thurs. & Fri., Feb. 27-28
Atwood • 626-3211

Thursday, Feb. 27
Colby (p.m.)
CSMC, 175 S. Range
785-462-3332
CMC, 100 E. College Dr.
785-462-7511

Specials
Sunday
Chicken Parmesan
Breakfasts every day

SUBWAY
Party Platters Available

Meeting room is available for parties and meetings

Verizon Dealer
4G LTE Broadband
Phones, Plans, etc.

Majestic Service & Truck Stop
510 West Highway 36
St. Francis, Ks.
785.332.2905

"Oh, Give Me a Home..."

C	L	O	S	T	A	D	A	M							
P	I	N	E	E	R	I	E	T	O	R					
R	E	A	L	E	S	T	A	T	E	T	W	I	N		
R	E	F	O	W	E	S	C	E	N	A	R	I	E		
A	M	O	U	R	R	O	S	E	T	T	A				
C	A	R	P	E	T	F	I	R	S	Y	E	P			
K	I	S	S	T	I	N	F	E	R	O	M	A	R		
S	L	A	A	D	E	E	S	A	F	A	F	E	T	O	
L	A	W	E	R	S	D	A	N	E	S					
H	E	R	E			O	L	D	T	R	E				
R	E	S	I	D	E	A	F	I	R	E					
E	L	I	S			S	E	T	T	L	E	M	E	N	T
E	D	G	E			T	A	I	L		S	T	R	E	D
F	A	N	S			A	R	T	Y		S	T	E	W	S

American Profile
Celebrating Hometown Life

See American Profile magazine in this week's issue of

The Saint Francis Herald

(available in local area only)

Brought to you by The Herald

"Your sponsorship could be right here."

For more information contact: **Tim Burr**
at 785-332-3162