

Board deals with less money

By Karen Krien

Money or lack of money and how it affected several areas of operating the schools was discussed when the St. Francis Board of Education met Monday evening. The school's budget is suffering because of declining enrollment, the teachers' salaries would be frozen with a bonus check (providing there is funding left) issued in May, and

the cost of the school's health insurance were among the concerns of the administration and board.

The school's budget is based on the number of students for the current school year or an average of the last three years can be taken. The schools showed an increase of students but the number of students was still down on the average so Superintendent Carl

Werner showed the St. Francis Board of Education members where the cuts would be made.

Since the General Fund will be down over \$97,000, cuts had been made in the water, insurance, heat and electricity budgets. The money to pay these items will be taken from the Supplementary General Fund which is money raised through taxes for the Local Option

Budget.

Superintendent Werner recommended that the teachers' salaries continue to be frozen with the exception of pay for additional hours which teachers have earned. At the end of the school year, they could possibly receive a "13th check" as a bonus. Board member Bonnie Zwegardt asked if this check would throw the teachers into a

different tax bracket or cause other problems. The superintendent did not think the checks would be that large.

Mrs. Zwegardt then asked if teachers would not become discouraged if they knew they were not getting a raise but the board was still talking about building on to the school with a commons area or gym? Superintendent **See LESS on Page 7**

School round up

• Sports leagues discuss working together. See article on this page.

• School numbers dwindle all over the state. See more on Page 3.

League activity directors talk about working together

In recent weeks, Carl Werner, St. Francis School Superintendent, and Scott Carmichael, principal and athletic director, have been talking to other schools about the problems of scheduling sporting events and the distances traveled.

At the Monday meeting of the board of education, Principal Carmichael reported that administrators of schools in the Northwest Kansas League, the league which St. Francis is a member, and those in the Mid-Continent League, the league comprised of northwest Kansas towns east of those belonging to the Northwest Kansas League, have met to see if there is some way that the schools can work together.

The Mid-Continent League is comprised of 10 schools and two are larger schools while the others are smaller and one has even gone to 8-man football. The Northwest Kansas League has eight and two are on the edge of playing 8-

man football. While most of the schools appear to be willing to work together, Ellis and Osborne prefer not to come to St. Francis to compete. It was suggested that when towns with a great distance between them compete, that they meet on a neutral playing field, like Wray and Concordia will meet in Norton to play this season.

At this point, none of the athletic directors and superintendents are talking about doing away with a league or combining leagues. It was suggested that in wrestling, a league tournament be held as usual and then have a tournament with Mid-Continent and Northwest Kansas leagues.

"At least we would be staying in Kansas and competing," Principal Carmichael said.

By working together, the athletic directors in the two leagues could work together and line up games that would **See TOGETHER on Page 7**



PAINT SPILLED OVER THE HIGHWAY by vandals caused some serious problems for some drivers who came upon it while it was still wet. *Herald staff photo by Karen Krien*

Vandals throw paint on roads

Sheriff Eddie Dankenbring reports two incidents of five cans of oil-base and latex-base paint being thrown on roads.

Three of the cans of paint were thrown on the road west of town near Riverside Recreation and the other two cans were thrown on the old

Wheeler Road east of the water tower in St. Francis.

The paint was still wet when several vehicles came upon it and it threw paint onto their car. This is just a form of vandalism that needs to be stopped, he said.

The paint was thrown on the roads between Friday and Saturday night.

The sheriff said he had some leads but would appreciate any information as to who might have thrown the paint.

A reward is being offered for more information concerning the matter. Call the sheriff's office at 785-332-8880.

New ad sales manager joins newspaper staff

Claire Jeanfreau-Hilt has joined The St. Francis Herald and Bird City Times staffs as the new ad manager. Mrs. Jeanfreau-Hilt has been in the area for several years and about a year ago, married St. Francis man Greg Hilt.

She worked part time at KM Clothier but is mainly known for her specialty beaded jewelry business which she has built up, having clientele in Denver as well as businesses in some of the surrounding towns.

Mrs. Jeanfreau-Hilt has a journalism degree with an emphasis in advertising/public relations, graduating from East Texas State University in Commerce, Texas. However, following graduation, she took a job with Acme Packaging Corporation where she was the sales representative in Texas and New Mexico, representing the leading steel strapping manufacturer throughout that area. During this time, she maintained a \$3 million territory with a customer base of both national and regional distributors as well as direct-end users.

In 1996, she went to work as an account executive for IKON Network Services Group in the Dallas/Ft. Worth metroplex. She maintained a \$400,000 territory by selling LAN/WAN solu-

tions, demonstrating knowledge of hardware, software, remote access and Internet products to potential customers.

Before moving to Denver she was an account executive for Comp USA, Inc. in Dallas. Again, she sold LAN/WAN and helped desk solutions with her knowledge of hardware, software, remote access and Internet products. She grew business within current account base by keeping customers abreast of the newest technologies and other Comp USA service offerings such as training and vendor promotions.

Upon moving from Dallas to Denver, she built her own jewelry business, designing and creating the pieces, then marketing and selling the product direct to the public through jewelry parties and wholesale to stores in the Kansas, Colorado and Nebraska area.

While Mrs. Jeanfreau-Hilt has been in the area, she says that she still has lots of people to meet and is looking forward to calling on businesses and helping customers with their advertising needs.

"We are happy to have such a talented and motivated ad person with the two newspapers," said Karen Krien,



NEW AD SALES MANAGER joins The Herald and Times staff. **Claire Jeanfreau-Hilt** started full time on Monday and will be calling on customers next week. *Herald staff photo by Karen Krien*

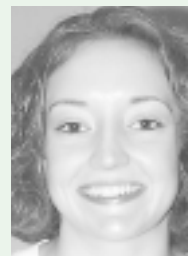
publisher. "She will be an asset in the office as well as to the businesses she works with."



MESSY HAIR AND HAT DAY was one of the activities at the high school during Homecoming Week. **Samantha Coates** rats **Trish Neitzel** while **January Fiedler** laughs. *Herald staff photo by Karen Krien*

King, queen to be crowned Friday

This week is one of the more fun-filled weeks of the high school year as St. Francis Homecoming activities begin. Ten high school seniors have been chosen as this year's homecoming royalty and will be crowned at the pep rally starting at 2:30 p.m. on Friday in the high school gym. Royalty this year include: Kelsey Andrist, Heather Culwell, Amber Feikert, Brooke Kibel, Gina Frohlich, Brian Draper, Travis Hilt, Justin Lindsten, Cale Rieger and



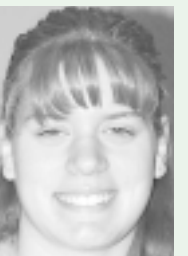
Andrist



Culwell



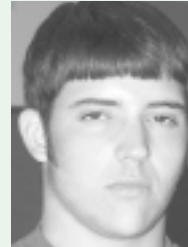
Feikert



Frohlich



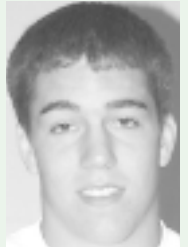
Kibel



Draper



Hilt



Lindsten



Rieger



Walz

Dallas Walz. Crownbearers are Maggie Lambert and Dalton Straub.

Monday found the students with messy hair and crazy hats. The junior varsity football team played Wray on

Greene Field and the seniors painted the streets as the sun was going down.

There were a lot of good-looking students all dressed up for Dress-Up **See CROWNED on Page 7**

Next year's fair dates set at meeting

By Leslie Hilt

The Cheyenne County Fair Board set the dates for next year's fair as Aug. 6 through 9.

The final dollars were totaled from the 2002 county fair proceeds and with all expenses paid, the board had some decisions to make. The Kids' Ranch Rodeo had a small loss, losing about \$290, however this was a new event and many of the people didn't know what it was. The board expects more interest in this event next year.

The rodeo was the biggest loss, losing a whopping \$1,932. The members discussed having the antique tractor pull instead of the rodeo next year, it was also discussed that the rodeo participants said they would not come back unless the pens were redone. The cost of replacing the pens would not be feasible. President Dick Bursch will contact the tractor pull association to see about setting something up for next year. The other events all made a little money including: mud volleyball made \$224; attendance award made \$270; and the demolition derby again was the top money maker at \$5,340 profit.

Flower and Garden Show

Elmer Kellner, St. Francis, represented the open class flower and garden division and had a few suggestions for changes. Mr. Kellner asked about dropping the most unusual vegetable class and adding a vegetable art class. He had seen this done at another fair and thought it might be fun and would perhaps help get the number of displays up some. He also discussed changing the display numbers in some of the vegetables. The board members didn't see any problems with changing the numbers in the open show however, the state set the rules for the 4-H division, so those numbers would stay the same.

Mr. Kellner had spoke with Mary Beikman, art teacher, about having some of the art kids paint a mural on the wall in Jenkin's Hall. Mrs. Beikman thought it would be difficult to get the kids back and forth with so little class time and suggested that maybe a 4-H club would be interested in the project. Susan Knodel, 4-H program coordinator, will check with the different 4-H clubs and get back to the board. The board ask that they bring plans of what **See FAIR on Page 7**

Mrs. Jeanfreau-Hilt's first full day on the job was Monday. In the weeks to **See JOINS on Page 7**

Accidents most often occur on public roads

The most common location for the general public to become involved in agricultural accidents is on public roadways.

The safety campaign "Not Just for Farmer's Anymore.." stresses the importance of education and awareness says, Royce Cook, Cheyenne County Farm Bureau Safety Chairman.

The Kansas Department of Transportation reports that during the five year period between 1997 and 2001 there were 683 traffic accidents involving farm equipment resulting in 25 deaths and 261 injuries.

The public needs to keep in mind that tractors and other agricultural machinery often cannot travel faster than 25 miles per hour. Any vehicle or farm equipment designed to travel at speeds of less than 25 miles per hour is considered a "Slow Moving Vehicle." These vehicles are required to be marked with a Slow Moving Vehicle emblem. By day, the emblem

are a bright florescent orange triangle that is highly visible. By night, the reflective red border of the emblem glows brilliantly in the path of approaching headlights.

Many farmers ensure maximum visibility by inspecting their emblems and reflective parameter markings during routine maintenance to ensure they are clean and in good repair.

Pedestrians and bicyclists are another area of concern.

"Rural roads are becoming more and more popular for recreational activities," says Holly Higgins, Kansas Farm Bureau Safety Director. "See and be seen, everyone needs to do their part to reduce the likelihood of an accident occurring."

For additional farm safety information, contact the Cheyenne County Farm Bureau, visit the Kansas Farm Bureau website www.kfb.org or contact the Kansas Farm Bureau Safety Division at (895) 587-6000.



PRAYER WALK FOR LIFE was held Sunday afternoon as a group from St. Francis and Bird City carried signs to raise awareness to stop abortion. Pictured, left to right are Ed Carson, Alice Lampe, Phyllis Carson, Norman Morrow, Dorothy and Elmer Keller and Fred Magley.

Herald staff photo by Karen Krien

LESS

Continued from Page 1

Werner said that the law states that salaries cannot be paid from the Capital Outlay Fund which is the fund which the building would come out of.

Gene Dodd, board member, said he had heard several comments that the teachers were happy that no positions had been cut and all teachers still had jobs.

Health insurance was also addressed. The school's insurance is provided by Blue Cross Blue Shield and the school pays a portion. This year, the school was offered a four-tier plan instead of last year's two-tier plan.

In the two-tier plan, the single monthly premium was \$285.17 and the school paid \$28.50 with the teacher picking up the remainder. A family monthly premium was \$617.92 with the school paying \$56.99 and the teacher paying the remainder.

This year, the single monthly premium is \$256.10 and the school will be picking up \$57, with the teacher paying \$199.10; an employee and children monthly premium is \$483.07 with the school paying \$114, leaving the remainder for the teacher to pay; the employee/spouse

monthly premium is \$550.35, the school pays \$114 and the teacher pays the rest; and finally, employee/dependents monthly premium is \$771.08 and the school pays \$114.

The school has doubled the amount of the premium paid this year but Superintendent Werner warned that it is very possible that the school

will not be able to pay this same amount next year — it just depended on how much education funding is cut by the state. The school's share of the insurance will run anywhere from \$37,046 to \$56,882, depending upon the number of personnel signing up for insurance and what plan they will use.

JOINS

Continued from Page 1

come, she will not only be selling ads to businesses on a weekly basis but will also be selling the annual Fall Sports insert, looking for Booster Sponsors in both St. Francis and Bird City and will soon be talking to merchants about the annual Christmas On Us promotion.

The Hilt has their dog Pebbles and two cats, MiMi and Stormy which wel-

come them home every evening. In her spare time, Mrs. Jeanfreau-Hilt makes jewelry and loves to decorate and remodel their home in St. Francis. Mr. Hilt works as the Sales Manager for Van Allen Implement in Wheeler.

"We welcome people to stop by and meet Mrs. Jeanfreau-Hilt. And, if there are any ad needs, she will be glad to help," Mrs. Krien concluded.

CROWNED

Continued from Page 1

Day on Tuesday. It was also selected as a day to be nice to volleyball players. The high school volleyball team met Triplains and Oakley at Oakley.

Wednesday was T-shirt signing day.

Thursday is "Twin Day" which generally has some remarkable look alikes. The C-team volleyball team plays in Colby and the junior high football and volleyball teams are hosting Holyoke.

That evening, the Bankwest employees will be serving hot dogs and chips in the cafeteria before the bonfire begins. Following the blaze, people will be able to cool off with ice cream served by First National Bank employees in the cafeteria.

Green and Gold Day has been reserved for Friday. The pep assembly will be held at 2:30 in the gym where the spirit award will be given and the homecoming king and queen will be crowned by last year's queen Becky Leinen. The high school football team will meet Quinter at 7:30 p.m. on Greene Field. Before the game, the pep club will be holding a soup supper and will be serving chili and cheesy potato soup.

The end of the homecoming activities will be the dance held from 8:30 to 11:30 p.m. in the cafeteria on Saturday.

The community is urged to support the many activities including the soup supper and the games held throughout the week.

FAIR

Continued from Page 1

they paint for approval.

Mr. Kellner asked about the farmers market setting up a booth at the fair and whether or not there would be a charge. The board explained since it was the farmers market coop they would be like any other vendor and there would be a \$30 charge.

In other business

- In other business:
- A thank you was read from Jody Gienger.
- The board discussion horse show rules and complaints. The horse leader

will be contacted to come to the next meeting.

• Compliments were told on how well the derby went and the good job Dwight Faylor and crew did.

• It was noted that the board needed to work on handicap accessible parking and making the bathroom handicap accessible.

• There was a discussion on by-laws but no decision was made.

Next meeting

The next meeting of the fair board is set for 8 p.m. on Nov. 7 in the commissioners' room at the courthouse.

Pleasant Hill Bierocks Are Back!!

• Same great recipe, same great taste.

• Now taking orders for Oct. 19 pickup.

\$15.00 - Dozen • \$7.50 - 1/2 Dozen

• To order call any Pleasant Hill 4-H'er or

Tammy Grice 332-2910, Iva Krien 332-3902,

Jeanne Dunn 332-3931

41, 42

WE SEE YOUR NEED FOR LIFE INSURANCE GROWING EVERY DAY. WE LIVE WHERE YOU LIVE.™



As your family grows, so does your need for protection. And nobody can help you provide that protection like me, your State Farm agent. See me today.

Jim Neal, Agent

1007 Main Street
Goodland, KS
785-899-5592



LIKE A GOOD NEIGHBOR

STATE FARM IS THERE.™

State Farm Life Insurance Company (Not licensed in NY or WI)
State Farm Life and Accident Assurance Company (Licensed in NY and WI)
Home Offices: Bloomington, Illinois

PO2228 05/02

BUSINESS CARD DIRECTORY

To list your business drop us a card!
Call 785-332-3162 today.

For all Your Insurance NEEDS
See Gary at Goff Agency

785-332-2898
St. Francis, KS

Melvin Dunn, Dentist



Office Hours:
8 a.m. - 5 p.m.
Monday - Friday
785-332-2062
300 N. College

Dr. D.F. Schnee

Optometrist
601 E. Hwy. 24
Goodland, KS 67735
785-899-5501
or 1-800-864-4612

The Saint Francis Herald
Claire Jeanfreau-Hilt
Advertising Manager
clairejh@nwkansas.com

310 W. Washington
PO Box 1050
St. Francis, KS 67756

sthermal@nwkansas.com
785-332-3162
785-332-3001 (fax)

Dr. R.K. Driver

Optometrist
110 W. 10th
Goodland, KS 67735
785-899-3654

Closed Wed. afternoon and all day Sat.

Car Perfect
Paintless Dent Repair
Auto Hail Damage Repair
Windshield Chip & Crack Repair

Marty Church
RR 2 Box 93
St. Francis, KS 67756

Office 785-332-8930
Cell 303-378-7018
Toll Free 1-877-206-2931

Hot Brush
SINCE 1974

SIGNS-LETTERING & PINSTRIPES
Custom Vinyl & Painting

Box 309
BIRD CITY, KS 67731
FAX-785-734-2459

800-886-2423

NOVUS
AUTO GLASS REPAIR & REPLACEMENT

FRANK & PAULINE KAISER
Owners
P.O. Box 93
Long Island, Kansas 67647

An Authorized Independent Franchise

785-854-7674
1-888-247-5153
Fax 785-854-7675

REPAIR
REPLACEMENT
MOBILE SERVICE

THE PERFECT CLIP
DOG GROOMING

APPOINTMENT FOR _____ TIME _____
DATE _____

PLEASE CALL 24HRS IN ADVANCE IF UNABLE TO KEEP APPOINTMENT

JANAN COOPER PH# 785-332-2615