

## Students name best teachers

A select group of America's teachers are being honored by their toughest critics...their former students, in the seventh edition of Who's Who Among America's Teachers, 2002.

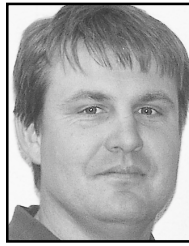
All of the approximately 114,000 teachers being honored were selected by their former students who themselves are currently listed in Who's Who Among American High School Students, of The National Dean's List, publications which recognize 5 percent of our nation's high school and college students respectively.

Parke Davis, publisher of Who's Who Among American's Teachers said, "there is no greater honor teachers can receive than to be recognized by former students for their excellence and dedication. In this publication we clearly have the best teachers in America selected by the best students."

The students were requested to nominate the one teacher from their entire academic career who "made a difference in their lives" by helping to shape their values, inspiring interest in



Burton



Keltz

a particular subject and/or challenging them to strive for excellence. Many of the students commented about the enthusiasm and knowledge their teachers demonstrated in the classroom, and many praised their teachers for their ability to relate to youngsters on a personal as well as a professional level. One student wrote about her teacher saying, "she made education something pleasurable, instead of a dreadful ordeal by letting me spread my wings and showing me the best way to fly."

Local educators honored in Who's Who Among American Teachers, 2002 include Anita Klepper Burton and Max A. Keltz.

## Weatherman gives 27 years of service

Bird City's weather observer, Wayne (Tom) Sawyer announces his retirement from being the weather observer after 27 years of volunteer service. Mr. Sawyer has been faithful in recording data and posting it at the Blue Bird Cafe. However, recent illness and the need for new modern equipment has helped him reach his decision to retire.

Through Mr Sawyer's encouragement, Troy and Cindy Burr are willing to take over this volunteer service when new equipment is installed. The cost of the new equipment is \$850. The new station will record rainfall, the time of daily high and low temperatures, wind velocity, etc.

This weekend's moisture brought the moisture amount to 8.7 inches for 2002. Mr. Sawyer states this amount is approximately half of the long time average for a full year.

The Bird City Community Club is spearheading a fund-raising campaign to raise the money needed for



Sawyer

the station. Donations are well underway with individuals and organizations donating. However, more are needed. If you are interested in helping, send your donations to the Bird City Community Club, Box 388, Bird City, KS 67731 or see Larry Henry.

## More booths sign up for Chamber's show

This is the seventh year for the Arts and Crafts Show which is slated to be held from 10 a.m. to 3 p.m. on Saturday at the St. Francis Grade School on Washington and Francis streets.

"We have more booths and more vendors signed up this year and it looks like we are going to have an even better variety of items," said Tammy Grice, one of the co-coordinators of the event.

There will be hand-crafted items including Santas, snowmen, wood-painted items, yard ornaments, Christmas ornaments, wooden shelves, candles, original oil paintings, Victorian wood-carved items, rope baskets and much more.

"Each year, the show grows in the number of items but we are especially happy with the quality of work which comes with each of the vendors," said Bonnie Zweygardt, co-coordinator.

Non-profit organizations are welcome to also set up booths. As of Tuesday, the junior class was holding a bake sale, the sophomore class will be selling pop and candy bars, the Christian Church ladies will be selling pecans, and Allison Grice and Trista Orth will

have a caramel apple stand. Throughout the day, door prizes will be given away. Prizes will be provided by the craft vendors and area merchants.

"Over half of the people who came to the Craft Show last year were from out-of-town," Mrs. Grice said.

With this information, merchants are taking advantage of these shoppers, offering them coupons and discounts when they take time to shop their businesses after the Craft Show closes.

"The coupons and discounts will get shoppers downtown to see the business district and shop some of the stores," Mrs. Grice said, noting that there are always compliments on the variety of businesses and items stocked in the local shops.

The Craft Show also gives local crafters the opportunity to show off their talents.

"We have a lot of talent in the area and it's great to see what people can do," Mrs. Zweygardt said.

**Kid's Craft Corner**  
A popular activity during the show is the "Kids' Craft Corner." The corner gives children of all ages an oppor-

See Chamber on Page 5

## Benefit soup supper slated for this Monday

A benefit soup supper for Cindy Herdt will be held at the Immanuel Lutheran Church in Oakley from 5 to 7 p.m. on Monday, Nov. 4. It will be a free will offering and the proceeds will go to help with Cindy's medical costs. Matching funds by Aid Association of Lutherans,

Branch 1719 in Oakley will also go toward her medical expenses.

Mrs. Herdt had lived in Bird City for several years and still owns a home here and is active in the Antique Auto Club. She worked at the Cheylin schools as a custodian until health forced retirement.



ERNIE KETZNER, Auctioneer, kept the sale rolling with the help of Fred Magley.

Times staff photo by Karen Krien

## Pioneer Auction deemed a success

The great participation of both the St. Francis and Bird City communities in the fund raising auction at the museum Saturday, Oct. 26, made the day

a success. The day was a lively one with fun and laughter of the competing bidders. The items displayed were an example of what a caring community can accomplish. The

auctioneer (Ernie Ketzner) kept the bidders enjoying the day.

These funds will be used for the development of historical projects by the Cheyenne County Historical Society.

Watch your Historical Society news letter for the development of these projects as well as articles in the St. Francis Herald and Bird City Times.

## Voters urged to cast ballot for candidates

There will be races for national and state offices in the general election on Tuesday but, in Cheyenne County, the only local election will be to fill the seat of county commissioner in District 1, Bird City.

Incumbent Jane Brubaker beat out her opponent in the primary and will be running unopposed on the ballot. However, Tuesday morning, Sam Beeson who ran against Mrs. Brubaker in the primary, announced a write-in campaign. (See related article about both Mrs. Brubaker and Mr. Beeson.)

Another interesting race will be that for state board of education. Connie Morris, St. Francis, won an overwhelming victory in the primary over I.B. "Sonny" Rundell. However, after Mrs. Morris made a stand on not educating the children of illegal immigrants, Mr. Rundell decided to conduct a write-in campaign. (See related article about Mrs. Morris and Mr. Rundell.)

Candidates which voters will find listed on the ballot will include:

**National offices**  
U.S. Senator: George Cook, Reform; Pat Roberts, Republican; Steven A. Rosile, Libertarian.

U.S. Representative, 1st District: Jerry Moran, Republican; Jack Warner, Libertarian.

**State offices**  
Governor and lieutenant governor:

Dennis Hawyer and Joel Heller, Libertarian; Ted Pettibone and Mike Wilson, Reform; Kathleen Sebelius and John Moore, Democratic; Tim Shallenburger and David Lindstorm, Republican.

State treasurer: Sally Finney, Democratic; Lynn Jenkins, Republican.

Attorney General: Chris Biggs, Democratic; Phill Kline, Republican.

Secretary of State: David Haley, Democratic; Charles St. George, Reform; Ron Thornburgh, Republican.

Commissioner of Insurance: Jim Garner, Democratic; Sandy Praeger, Republican.

State Representative, 120 District: John Faber, Republican; Bob Strevey, Democratic.

State Board of Education: Connie Morris, Republican.

**County office**  
Jane C.W. Brubaker, Republican.

**Questions**

There will also be two questions listed on the ballot:

1) To vote for a Justice of the Supreme Court being retained in office, make a check in the square left of the "yes." To vote against the Justice of the Supreme Court being retained in office, check in the square left of "no." Voting "yes" will retain Kay McFarland as the Justice of the Supreme Court.

2) To vote for a judge of the Court

## General election set from 7 to 7 on Tuesday

The general election has been set for Tuesday but those wanting to cast their votes earlier may do so at the county clerk's office where a voting booth has been set up. The advance voting booth will close at noon on Monday.

On Tuesday, the polls will be open from 7 a.m. to 7 p.m. at several places in Cheyenne County. In Bird City, people will vote at the American Legion Hall. In St. Francis those living in Wano I Township will vote at the Peace Lutheran Church and those living in Wano II will vote at the Methodist Church. Those living in Benkelman, Calhoun, Cleveland Run, Jaqua and Orlando townships will vote in the basement of the courthouse.

Terry Miller, county election officer, said that there have been many questions about the write-in campaign since I.B. "Sonny" Rundell announced a write-in campaign.

Points of interest include:

- The name doesn't have to be spelled correctly. It is up to the county board to determine the intent of the voter so anything close will most likely be counted.
- Ideally, the box should be checked as well as a name written in. However, the vote will count even if the box isn't checked (write-in candidates only).
- Cheyenne County has decided to not allow stickers to be placed on the ballot. Some candidates supply stickers to be placed on the write-in line and it is up to each county to decide whether to allow this or not.

Appeals being retained in office, mark "yes." To vote against a judge of the Court of Appeals being retained in office, mark "no."

Judges running to be retained in office include: David S. Knudson, Position 1; Lee A. Johnson, Position 2; Carol A. Beier, Position 4; Robert J. Lewis Jr., Position 6; Henry W. Green Jr., Position 7; Jerry G. Elliott, Position 8; Gary W. Rulon, Position 9; Robert L. Gernon, Position 10.

## Meet the candidates

**Jane Brubaker**

By Karen Krien  
Incumbent Jane Brubaker is running unopposed for a third term as Cheyenne County Commissioner, District 1, and thinks experience is important, especially in this time when the dollars are short and there is a drought.

"I think it is very important to keep taxes to a minimum while keeping services to the county residents," she said. "Besides, it takes several years working on the board to understand the budget."

Issues Mrs. Brubaker has on the agenda include:

- Keeping the taxes down is hard to

See Brubaker on Page 5



Brubaker

**Sam Beeson**

By Karen Krien  
"You know the old saying, 'you don't know what you've got until it's gone,'" said Sam Beeson, candidate for Cheyenne County Commissioner, District 1.

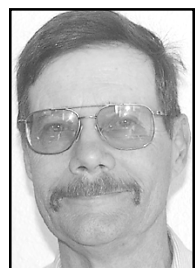
Mr. Beeson is concerned about filling up the county's landfill and feels, that, as a commissioner, it is important to stress recycling.

"By recycling, we could continue to use the Cheyenne County Landfill for years to come," he said.

Mr. Beeson is concerned with several other issues including:

- Living in the country, he sees the conditions of the roads and ditches

See Beeson on Page 5



Beeson

**Connie Morris**

By Kimberly Brandt  
After nine years of teaching, Republican Connie Morris said, she decided to run for the state Board of Education.

Mrs. Morris, who lives in St. Francis and taught in Idalia, Colo., traveled across northwest Kansas on the "Victory Tour" bus with fellow Republicans on Thursday. She said she got on the bus in Russell, where Sen. Bob Dole spoke, and traveled through most of her district, getting off in Phillipsburg.

With being a teacher, she said that she has seen the classroom and knows how it all works. She said she has some

See Morris on Page 5



Morris

**Sonny Rundell**

By Kimberly Brandt  
Incumbent Sonny Rundell is running a write-in campaign to be re-elected to the Kansas State Board of Education after losing in the primary to Connie Morris of St. Francis.

Mr. Rundell has served 14 years on the board and before that, 11 years on the school board in his hometown of Syracuse.

Since Mr. Rundell is running a write-in campaign, he said anyone who wants to vote for him will have to actually write his name in and check the box next to it.

He said that after he lost the primary,

See Rundell on Page 5



Rundell

## Brubaker

*Continued from Page 1*

do when the budgets are already cut as far as they possibly can be cut.

- The need for more emergency medical technicians.
- Keeping county roads in good condition
- Consideration of consolidated law enforcement.

Commissioner Brubaker thinks it is important to be involved in the community and she feels like she is doing that.

"I am the treasurer of the Bird City Community Club, work each year at the Thresher Show, I am active in church

and attend almost every community event. I also shop locally which I think is important," she said.

The commissioner and her husband Gary are farmers. They have one son Jacob who entered the Cheylin School this fall.

Commissioner Brubaker was born and raised in Atwood. She graduated from high school, then went on to attend Kansas State graduating with a degree in agri business. Not happy with that degree, decided to go on with her schooling, earning a degree in veterinary medicine.

## Morris

*Continued from Page 1*

ideas for solutions to problems that schools are facing, and she would like to put some of those to work.

After the primary, she said she was a little surprised that she won against veteran board member Sonny Rundell. It felt good, she said, and it seemed that people were receptive to her. She said she was in awe that it really happened.

Mrs. Morris said part of her platform is that she doesn't support a tax increase. Schools do need more money, but there are other changes that can be made instead of a tax increase. While campaigning, said Mrs. Morris, she has talked about the fact that administrative salaries are often double or in some cases triple what teachers are earning. People simply can't accept the idea, she said, that there is more going on in the office than in the classroom. There is a way to make those salaries more equitable.

The other item she has talked a lot about is her belief that kids enrolled in American schools should be American citizens. She said that is a drive she has taken up as a grassroots activist and she will continue to work on.

The state is spending too much on bilingual education. She said she can support a school year of students taking English as a second language, but after that it shouldn't be the taxpayers'

burden.

She said she doesn't believe bigger schools should buy books in Spanish while some small schools can't even purchase textbooks at all.

If elected, she said, she hopes to work on economic development, although she isn't sure that it is within the duties of the board. It is important to get young families with kids to Kansas to put kids in the schools, she said.

Mrs. Morris said she supports Republican Tim Shallenburger's plan to re-write the way schools are funded. She said he has some excellent ideas and she is interested to see it put to work.

Mrs. Morris's husband Kelly owns a plumbing business and the two farm near St. Francis. They have two daughters Jessica, 20 and Lacy, 18, both students at the University of Kansas.

On Tuesday, Mrs. Morris said, people should vote for her instead of her opponent because she doesn't support a tax increase while he does. More money isn't going to make things any better, she said; it will just be a big expensive band aid. The state can get the job done, she said. Schools just have to figure out with the help of the board how to do what is best with the money they have and are already drawing from the taxpayers.

## Plain Sense

### The power of a Grandma/Grandpa

*Contributed by Karen D. Beery, LCPC, Consultation and Education Department*

Children have a very special relationship with Grandma and Grandpa. That's why grandparents can be such powerful allies in helping keep a kid off drugs.

Grandparents are cool. Relaxed. They're not on the firing line every day. Some days a kid hates his folks. He never hates his grandparents. Grandparents ask direct, point-black, embarrassing questions you're too nervous to ask:

"Who's the girl?"

"How come you're doing poorly in history?"

"Why are your eyes always red?"

"Did you go to the doctor? What did the say?"

The same kid who cons his parents is ashamed to lie to Grandma. Without betraying their trust, a loving, understanding grandparent can discuss the danger of drugs openly with the child she adores. And should.

- The average age of first-time drug

use among teens is 13. Some kids start at 9.

- One out of four American kids between 9 and 12 is offered illegal drugs. Twenty-two percent of these kids receive the offer from a friend. And 10 percent named a family member as their source.
- Illegal drugs are linked to increased violence, to AIDS, to birth defects, drug-related crime, and homelessness.

As a grandparent, you hold a special place in the hearts and minds of your grandchildren. Share your knowledge, your love, your faith in them. Use your power as an influence to steer your grandchildren away from drugs.

If you don't have the words, we do. We'll send you more information on how to talk to your grandkids about drugs. Just ask for your free copy of Keeping Youth Drug Free. Call 1-800-729-6686 or visit the website at [www.drugfreeamerica.org](http://www.drugfreeamerica.org).

Grandma, Grandpa. Talk to your grandkids. You don't realize the power you have to save them.

## Business Directory

To list your business, call 785-332-3162.

### Hot Brush

SIGNS-LETTERING & PINSTRIPES  
Custom Vinyl & Painting

Box 309  
BIRD CITY, KS 67731  
FAX: 785-734-2459

800-886-2423

### Dr. D.F. Schnee

Optometrist  
601 E. Hwy 24  
St. Francis, KS 67756  
785-899-5501  
or toll free 1-800-864-4612  
Open Mondays\*Hours by appointment

### W. DUNCAN DAVIS, M.D. F.A.C.S.

Board Certified Surgeon  
106 Willow Rd. — Goodland, KS  
Telephone: 785-899-6024

Specializing in:  
General Surgery, Surgical Critical Care, Colon & Rectal, Breast: Biopsy, Lumpectomy, mastectomy, ABBI Procedure, Laparoscopic Procedures, Cesarean Sections, Hernia Repair

Consults at the  
Cheyenne Co. Clinic  
St. Francis - Fri. AM - 332-2682

Family Ctr. For Health, Colby -  
Tues. PM - 785-462-6184

Goodland Reg. Med. Ctr., Goodland -  
Mon. & Thurs. PM  
785-899-6075 or 785-899-6024

## Rundell

*Continued from Page 1*

he thought it was all over, but when his opponent came out against educating the children of illegal immigrants, he knew he needed to get back into it. He said that isn't only morally wrong, but in his opinion, it is against the law not to educate all kids.

Since the district is so large, said Mr. Rundell, he tries to listen to people as much as possible. When there are meeting with a lot of people involved in schools, he tries to attend. Last week, he attended a conference about migrant workers and education.

Basically, he said, his platform follows the three goals the state board adopted in January 2002.

The first goal is to help raise scores of students on tests dealing with reading, writing, math and social studies. He said for students in the top part of the scores, they would like to help raise their scores 5 to 7 percentage points. For the students at the lower end, the goal is to help raise their scores 25 percent.

Mr. Rundell said it is important to provide a qualified, caring teacher in every classroom in Kansas. Part of doing that is being able to provide teachers with an adequate salary.

Lastly, he said it is important to take a look at the way schools oper-

ate in the 21st century and ask questions. For example, are the students attending school the right hours of the day? Would it work better to have longer days and not as many? Are there some classes that can be combined?

With the tight budget in Kansas, he said, some schools are already combining classes and teachers' jobs, and that may be something that the entire state should look at.

Basically, said Mr. Rundell, the state board is there to get information from local boards and set standards for accreditation of schools and certification of teachers. The board meets on the second Tuesday and Wednesday of each month.

Mr. Rundell has been the board's chairman for nearly two years.

A retired farmer, he and his wife Verna have four children, Brent, Barbara, Beth and Ira. They all live in Kansas with the exception of Ira, who lives in Chicago. They are all out of college although he said he has grandkids going to college.

"I feel that it is important that we educate all kids," said Mr. Rundell. "The kids need to have an understanding of all the students in the world. The world is getting smaller, and we are dealing more globally these days and need to have an understanding of all people."

## Beeson

*Continued from Page 1*

which he finds need more attention.

- Making sure country roads are safe, especially during harvest.
- The shortage of emergency medical technicians.
- Keeping jobs and creating more jobs in the county.

Otherwise, he thinks the county is running pretty good.

Mr. Beeson was born and raised in Cheyenne County and later raised his family in the county. He served his country as a combat engineer in the Viet Nam War.

For the last 10 years, he has served as the Bird City City Superintendent

and was also a law enforcement officer. Before that, he was an employee on the county road and bridge crew. He has helped out the Bird City Fire Department and is a former Cheyenne County Deputy Sheriff.

"I feel that all of these duties have given me good knowledge of the way our local and federal governments are run," Mr. Beeson said.

Mr. Beeson and his wife Sherry live about 7 miles northwest of Bird City. They have six children who have enjoyed the good life of Bird City and five have graduated from the Cheylin High School (the youngest is an eighth grade student).

## Genealogy Korner

### Mary Minerva (Brown) Bailey Eakes Spaun

*By Marilyn Holzwarth*

We received an interesting request this last week, from the family of Mary Minerva (Brown) Bailey Eakes Spaun. Mary was the widow of Ben Bailey who died in 1896. Mary and her two sons came to Cheyenne County in 1902 from Missouri, and shortly after that married John Eakes. They filed for divorce in 1910, after an unhappy marriage. She married Josephus Spaun in 1913, and lived the rest of her life in Cheyenne County.

Mary and Ben Bailey had two sons, Henry Neil and Thomas Bailey. Thomas Bailey married Ella Simmons

and moved back to Missouri. Henry Neil Bailey stayed here in St. Francis where he fathered a child. The family would now like to learn more about this cousin, perhaps you know about him? He was born around 1925, 1926, or maybe 1927. He was considered part of the family, and he attended the funeral of his grandmother because his cousin remembered seeing him there in 1933. If you can help this family, please let me know, they will appreciate it. And you will help two families get back together.



## St. Francis Craft Show

Sat., Nov. 2 • 10 a.m.-3 p.m. CT

St. Francis Grade School  
Come Join The Fun!



- Handcrafted items of all kinds
- Wreaths • Santa Dolls • Snowmen
- Jewelry • Candles • Ornaments
- Floral Arrangements • Wooden Furniture & Shelves
- Baked Goods • And Much, Much More!!

• Kids Craft Corner • Kids can make & take!  
Door Prizes • Lunch will be served 11:30-1:30  
Sponsored by The St. Francis Chamber of Commerce

For more information call:  
Tammy Grice • 785-332-2910 or  
Bonnie Zwegardt • 785-332-2569

## Elect Bob Strevey

Democratic Candidate for State Representative

- LTC-USAR Retired
- 31 Years Teaching
- Vietnam Veteran—Awarded Bronze Star
- Farmer and Stockman
- Pro Life
- Fiscal Conservative

PRIORITIES:

- Cut Spending on Buildings in Topeka and Selected Areas
- Fund Basic Education
- Meet State Responsibilities:
  - To Elderly and Infirm
  - To Prison Staff
  - To Agricultural Support
  - To Roads and Universities

Paid for by Bob Strevey for Representative, Kaye Strevey, Treasurer



# Knowing more on breast cancer can save your life

October is Breast Cancer Awareness Month and the staff at the Cheyenne County Hospital, concerned that women know more about breast cancer and challenge some of the myths concerning the disease. The following myths were turned in:

**Breast cancer myths**

- Having fibrocystic disease increases your risk of breast cancer.
- Fibrocystic disease is a general term for any benign process in the breast and does not increase the risk of breast cancer.
- Coffee increases your risk of breast cancer.
- Only women with a family history of breast cancer are at risk.
- Mammography is 100 percent accurate in early breast cancer detection.
- Mammography is a very important tool for detecting breast cancer early, however, it is not 100 percent accurate.
- Older women don't have to worry about breast cancer.

ated by your doctor.

- A diagnosis of breast cancer is an emergency.
- Most breast cancers have been present for eight to 10 years by the time you can feel a lump, and so there certainly is time for you to get a second opinion, to read, and to fully explore the options.
- A mastectomy ensures that the cancer is gone forever.
- Mastectomy will remove the breast, however, it will not guarantee that the cancer will not recur. Eight to 10 percent of women will have a recurrence in the scar after a mastectomy and there is also the possibility of metastases.
- Lumpectomy and radiation are as good as mastectomy in preventing breast cancer from returning.
- A breast cancer diagnosis is a death sentence.
- Most early breast cancer is cured with standard treatments. Even in women who are not cured of breast cancer, they are certainly able to add three to five disease-free years to their lives.
- Only women get breast cancer
- Men also are able to get breast cancer and, in fact, there are 1,400 cases every year of breast cancer in men in this county.
- Abortion causes breast cancer
- There are no definitive studies linking abortion and breast cancer.

Breast Cancer Information Center  
Feminist Majority Foundation



## Chamber

*Continued from Page 1*

tunity to come to the make-and-take table, make a gift for themselves or a family member and then take it home. There is a small cost for the craft items

but it is worth it as kids are busy while their parents shop.

For more information, contact Mrs. Zwegardt at 785-332-25679 or Mrs. Grice, 785-332-2910.

## Vitalix Protein Tubs

→Fly →Mineral →Pasture Protein →Regular Tubs

Winter Discounts

Saddles • Tack • Trailers • Ropes • Rodeo Equipment

## P & D Repair and Sales

Hwy 36 St. Francis, KS 785-332-2384 or (cell) 332-0478

Corrected—

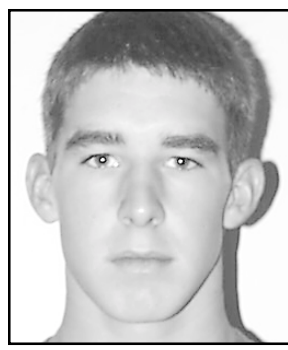
#25

Dillan Zwegardt

Junior

Unger Chiropractic Clinic

120 N. Scott 785-332-2186  
St. Francis



Write In...It's the Right Thing

FOR MEMBER STATE BOARD OF EDUCATION 5TH DISTRICT

✓ Sonny Rundell  
(write name as above)

Sonny Shines for All Kids!

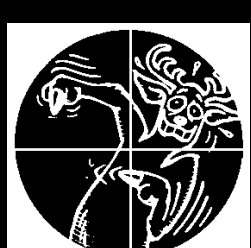
Why should you write in Sonny Rundell on November 5th?

- ✓ Sonny believes in local control of public education. His opponent believes there should be one administrator for five districts. The first step toward consolidation.
- ✓ Sonny believes our society cannot afford an uneducated populace...we must educate all children. His opponent believes we should leave some children behind.
- ✓ Sonny will work hard for Board harmony and the efficiency it brings. His opponent promises controversy and disruption.

Write in **Sonny Rundell** for Kansas Board of Education

Paid for by Write-in Rundell Committee  
Rosemary Clary, Treasurer

'No Hunting' signs available



at the St. Francis Herald

310 W. Washington  
785-332-3162  
St. Francis