

# Pheasant numbers down from past

By Karen Krien

The National Weather Service, Goodland, is forecasting a chance of snow and rain on Saturday and Sunday with lows in the 30s and highs in the 50s — not too bad for the opening weekend of pheasant season.

However, Randy Rodgers, Kansas Wildlife and Parks official, reports that the pheasant population is going to be down again this year. The problem with the pheasant population

stems back to three years ago when the drought seriously started to set in and the problem has carried into this year. The western third of the state and many counties near the Nebraska border in north central Kansas have experienced record-breaking drought over the past year. Rodgers said that the drought, made worse by triple digit heat and high winds, had resulted in poor game bird reproduction in this regions.

Drought-related problems for Kansas'

pheasants began late in 1999, and the few brief respites have done little to moderate conditions. Pheasant nesting in Kansas is heavily dependent on the timing of development and vigor of the wheat crop. Much of western Kansas suffered a failed or minimal wheat crop for the second consecutive year. Poor wheat development and early harvest limited pheasant nesting opportunities, even where a wheat crop was produced. Then the cold weather hit. The wheat stands

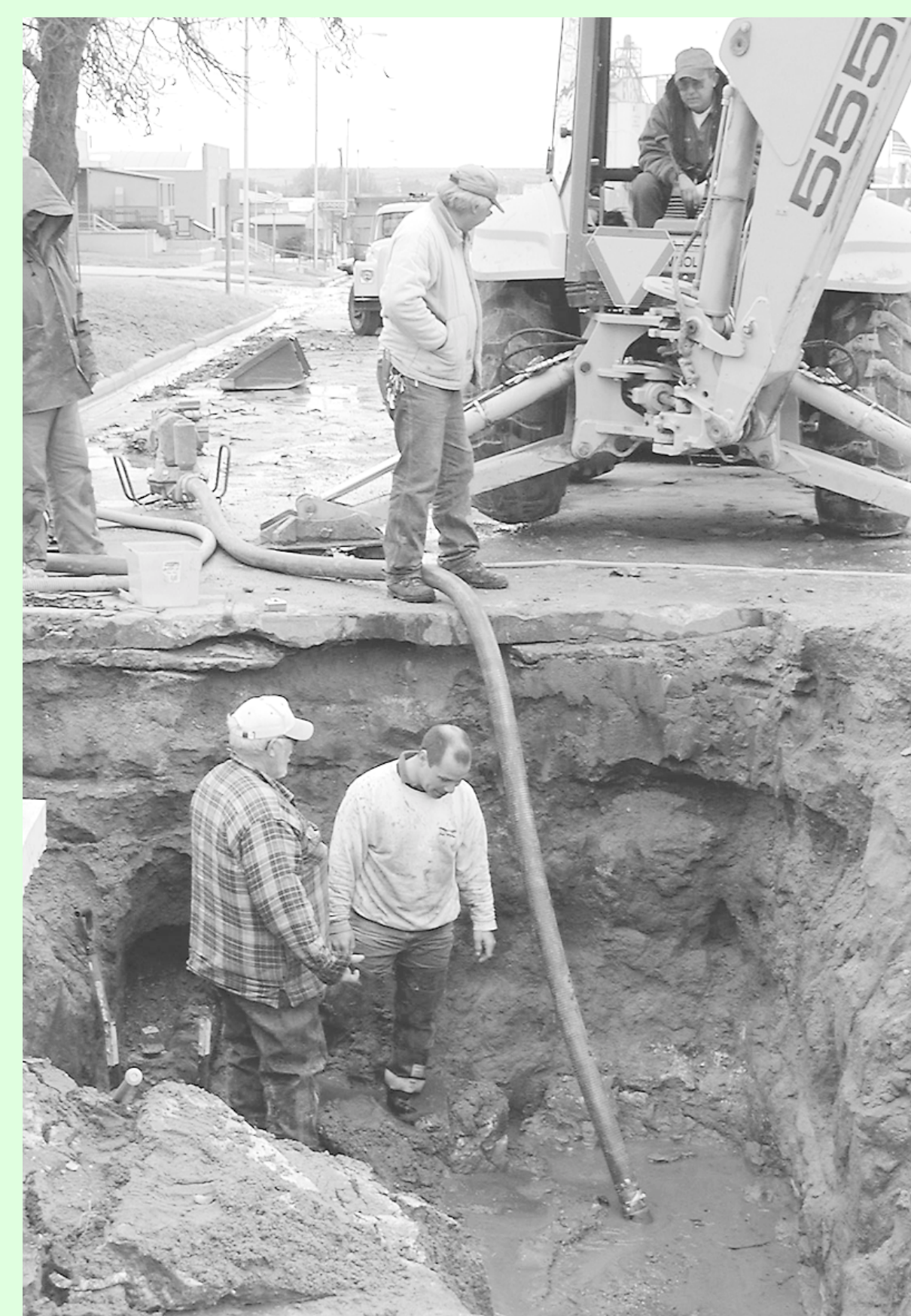
were poor and some wheat fields were worked up and alternative crops such as milo were planted or the crop was sprayed to eliminate weeds. Consequently, there was little or no nesting cover.

The birds were forced to go into alternate nesting sites which were not safe. Some of these sites were in wheat stubble or no-till land which were worked or planted and the birds were destroyed.

Poor nesting conditions resulted in fewer broods to take advantage of the abundant insect populations that occurred in some areas. Hot, dry conditions again reduced the size of broods produced and resulted in row-crop failures in the hardest-hit regions.

Pheasant populations have, however, modestly increased in eastern and southern sections of north central Kansas, and in the south-central.

See PHEASANTS on Page 7



THAT SAME OLE WATER MAIN broke again. Water was turned off in the city on Monday as the city crew repaired the main on Main Street. Now, there is an orange fence around the hole. In the hole is Bob Hankins and J.R. Landenberger. John Larson talks to Roger McQuigg in the tractor. Also pictured is Mike Meyers.

Herald staff photo by Karen Krien

## Political race ends Tuesday as election votes are tallied

By Karen Krien

The 2002 general election is finally over. The president can go back to doing White House business instead of campaigning, and television commercials will once again turn back to soap and soup instead of mud-slinging candidates vying for office.

In St. Francis, incumbent Jane Brubaker was the only local candidate running for commissioner in the Bird City District until last week when Sam Beeson, Bird City, announced a write-in campaign. However, when the votes were counted, Mrs. Burbaker had won having 86 votes over Mr. Beeson.

Another St. Francis woman has also been in the news lately. Connie Morris won the primary election for a seat on

the Kansas State Board of Education. She beat the bushes and won over 17-year incumbent Sonny Rundell.

It appeared that she would automatically be on the board until she made the statement that she did not support educating the children of illegal immigrants. That was when Mr. Rundell decided to initiate a write-in campaign and almost won the general but the final count found Mrs. Morris with 238 more votes over Mr. Rundell.

There were 59 percent of the county voters turning out for the general election on Tuesday. Election officer Terry Miller reported that 1,265 of the 2,150 registered voters cast their ballots. There were 218 voters casting advanced ballots or voted in advanced in

the booth at the clerk's office.

The voting results in Cheyenne County were:

**National offices**

**U.S. Senator:**  
George Cook, Reform 45  
Pat Roberts, Republican 1,104  
Steven Rosile, Libertarian 37

**U.S. Representative, 1st District:**  
Jerry Moran, Republican 1,117  
Jack Warner, Libertarian 72

**State offices**

**Governor and lieutenant governor:**  
Hawyer/Heller, Libertarian 5  
Pettibone/Wilson, Reform 13  
Sebelius/Moore, Democratic 483  
Shallenburger/Lindstorm, Rep. 740

See ELECTION on Page 7

## Hazardous items brought in to landfill concerns commission

By Karen Krien

A list of items brought to the county's Household Hazardous Waste disposal on Oct. 26 at the landfill site was submitted for the commissioners to review at the Cheyenne County Commissioners' Thursday meeting.

Ranae Pilkington, secretary for the county road and bridge and landfill departments, reported that there had been a number of hazardous items which the St. Francis city crew, during the city's fall cleanup held just prior to the Household Hazardous Waste disposal, had brought to the landfill. Commissioner Jane Brubaker had also been at the disposal and she and Mrs. Pilkington voiced concern that the re-

quirements for bringing in household hazardous waste items had not been followed. First, the city crew is not trained to pick up the hazardous items. Second, if there was a spill, who would be responsible for the costs — the city or the county? And, third, the people submitting the household hazardous waste were not identified.

The city crew had identified the city streets where the items were picked up and it was noted that there were two businesses on those streets and businesses are not allowed to bring items to the household hazardous waste disposal unless they pay for the items. Otherwise, the disposal is free.

See ITEMS on Page 7

### County round up

- The Food Pantry coordinator makes report and commissioners look for needed space. See Page 11.
- County health nurse reports on county's bio-terrorism plan. See Page 11.

## St. Francis plays Tuesday night for right to keep competing

By Betty Jean Winston

With the St. Francis Indians involved in the football playoffs, local high school football fans are interested in how the new Kansas State High School Activities Association rules have changed the post-season system.

This year for the first time, two teams from each division have advanced and in District 14 it was St. Francis and Atwood. These two teams have been placed in different brackets so if they both keep winning they will not meet each other

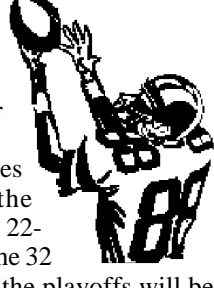
again until further down the line.

The St. Francis Indians traveled to Stockton Tuesday where they met the Stockton Tigers for bi-district competition. Unfortunately, the Tigers were victorious over the Indians and will go on to play the winner of the WaKeeney/Sublette game on Saturday.

The weekend of Nov. 15 and 16, Sectional action will take place. This level of competition for the winner of the bracket Stockton is in will involve a game with one of the following teams

Garden Plain, Hutchinson Trinity, Salina Sacred Heart or LaCrosse.

Sub-State games will be played the weekend of Nov. 22-23. By this time the 32 teams that made the playoffs will be down to the top four. State competition for the top two teams will take place on Saturday, Nov. 30.



## Winter starts cold and blustery

### Weather service says fourth coldest month on record

By Karen Krien

After an extremely long, hot summer, it appears that winter will be much the same except it could be an extremely long, cold winter. Residents were enjoying a mild fall with high temperatures ranging as high as 89 degrees on Oct. 11 and temperatures barely fell to freezing. However, that changed on Oct. 23 when temperatures fell to 23 degrees. Temperatures increased some but then dropped again last week.

The National Weather Service in

Goodland reported that October 2002 was the fourth coldest October since 1896 when records first started.

Kathy Woodcox, St. Francis weather observer, recorded only 1.20 inches of moisture throughout the month with snow falling on Oct. 29 and traces on Nov. 1 and 2.

Steve Rubin, meteorologist with the National Weather Service, said northwest Kansas, even with a little more rain recorded in the last six weeks, still has a deficit of 8.78 inches of moisture. The average rainfall/moisture for the year is 18.63 inches.

The forecast for the winter months is to have below-normal temperatures and below-normal moisture. The average temperature during the winter is the

50s for a high and 20s for a low.

Many of the fall crops have been harvested but there is probably another two weeks of harvest left. There has been some good yields in some irrigated fields but in others, yields were poor with some heads not even filling. The average yields for corn is estimated to be less than 100 bushels per acre when the good yields is around 200 bushels per acre.

Some farmers have had good bean yields and sunflowers have had poor yields. It has just been a bad fall harvest for farmers who also had a slim year for wheat yields.

It is the time when most farmers start feeding livestock but, this summer,

See WEATHER on Page 7



ALL DRESS FOR HALLOWEEN was Garrett Brent, 18 months old, son of Brian and Laura Brent, St. Francis. He is wearing a costume that his grandmother made for his aunt 18 or 19 years ago.

Herald staff photo by Karen Krien

## Shriners collecting kids' toys

The Cheyenne County Shrine Club members will be collecting good used and new toys for children in the St. Louis Children's Hospital and they will be distributed the week before Christmas.

Jim Milliken is offering his garage as the collection place from 9 to noon this Saturday.

Mr. Milliken noted that there are a number of parents in the area whose children have outgrown their toys and they would make ideal donations. They ask that the toys be in good, usable condition and that they be clean. The toys will be taken on to Salina where Shriners will go through them.

The Shriners have received a large donation of books of all kinds from a very generous donor but toys are needed. Some suggestions include:

- Crib and playpen toys: Rattles, squeeze toys, busy boxes, snap beads, activity centers, chimes, etc.
- Pre-school and developmental toys: See and Say, farm sets, xylophone, Busy Big Bird, Sounds Around, medical kits, dress-up trunk, etc.
- Board games: Battleship, Aggravation, Memory Game, Monopoly, Scrabble, Clue, Trivial Pursuit, etc.
- Dolls and stuffed animals: Large and small stuffed animals, Raggedy Ann and Andy, Muppet Babies, Button-up Dolls, etc.
- Boys' toys: Lego building sets, Matchbox cars, Hot Wheels cars, Tonka trucks, Transformers, Stoppers, etc.
- Card games: Playing cards, Uno, Old Maid, Character games, etc.
- Travel games: Hangman, Battleship, Wheel of Fortune, Memory, Hi-Q, 20 Questions, Trouble, etc.

See TOYS on Page 7



# ITEMS

## Continued from Page 1

Both commissioners Ron Krien and Tim Raile felt like that there was a misunderstanding and the city crew had probably not known about the rules of picking up hazardous waste. All of the commissioners commended the city for the effort to keep the city clean and helping residents. Commissioner Krien will talk to the council about the regulations at the next city council meeting.

## Two hospital board seats to be filled

There will be two seats to be filled on the Cheyenne County Hospital Board. Both positions will be advertised letting county residents know that the positions are open and people interested can apply at the clerk's office. The interview of candidates will be held at the end of November. The two positions are now being

filled by Leon Brethower, Bird City, and Kelly Gienger, St. Francis. Mr. Brethower had expressed interest in serving another term on the board. Mr. Gienger would like off the board.

## Road and bridge report

Dave Flemming, county road and bridge supervisor, reported that the county had received the quarterly payment from the state and the county should continue to get the payments for the next year but there could be a problem in 2004. All counties receive funding from the state.

Winter department projects were discussed. Commissioner Krien said that after the recent rains, there had been some ponds in the county roads and he thought that the operators should check their roads for these deficiencies and then, when working the roads, repair them. The supervisor said that the bridge

inspections are due in February. He said Penco Engineering has done the inspections in years past and the commissioners thought about seeking other bids but decided not to.

Supervisor Flemming had brought two very old county survey books, one dating back to Sept. 1859. He had received a bid for refurbishing the books: \$1015 for one and \$2,600 for the other. The commissioners asked how often they were used and, since they were seldom used, they agreed to wait on the refurbishing.

The supervisor is still looking for a scrapper and had located two but no decision was made.

## In other business

In other business:  
• Kevin Berens, county attorney, reported that two tables and some chairs had been purchased but the funding had

come from the Law Fund. He also said that the personnel handbooks will be ready for approval sometime in November.

• Pat Ostmeyer, Colby, had asked about submitting a bid for health insurance. The commissioners left the decision up to the clerk and staff depending on how much work it would entail.

• The final fee to Cooper and Malone, the bidding company for the hospital bond, was submitted at \$8,115. There is a question as to who, the hospital board or the county, was supposed to pay the bill.

• The commissioners approved for Dan Schlittenhart to attend a recertification meeting in Great Bend; and ambulance write-offs in the amount of \$1,094.

• The commissioners did not approve to have a strip of carpet installed in the

judge's room at the courthouse. The strip would have cost \$250 and would not have exactly matched the carpet already installed in the room.

• Susan Hobrock, Cheyenne County Development Coordinator, reported that the county was applying for a matching grant and asked that the commissioners sign a statement saying that they had pledged \$2,000 from the Parks and Recreation Fund. After looking at past minutes and seeing that there was sufficient funds, the commissioners agreed to sign the statement.

## Next meeting

The next meeting of the commissioners will be at 8 a.m. on Friday when the commissioners will canvass the votes from the general election. The next regular meeting has been set for 8 a.m. on Nov. 15 in the commissioners' room at the courthouse.

# PHEASANTS

## Continued from Page 1

tral region, where locally good pockets may occur. Survey data indicates that Kansas' pheasant populations, overall, are at record low levels.

## Hunting licenses

All residents age 16 through 64 must have a hunting license. Nonresident hunters, regardless of age, must have a nonresident license.

Hunting licenses can be purchased at the clerk's office at the courthouse in St. Francis. This office is open from 8 a.m. to 5 p.m. and closed weekends.

Other places to purchase hunting licenses in Cheyenne County include: Majestic Service, and K-Store; and The Country Gun Trader in rural Bird City.

## Fall Hunting Guide

For more information about hunting in northwest Kansas, stop by the Shay Realty, Burr Liquor, Tri-State Lumber, Parkhill Restaurant, Ringneck Country and First National Bank and pick up the Fall Hunting Guide. The guide contains numerous articles on hunting in the area and is sponsored by numerous businesses in the area.

# ELECTION

## Continued from Page 1

### State treasurer:

Sally Finney, Democratic 354  
Lynn Jenkins, Republican 842

### Attorney General:

Chris Biggs, Democratic 354  
Phill Kline, Republican 855

### Secretary of state:

David Haley, Democratic 210  
Charles St. George, Reform 36  
Ron Thornburgh, Republican 953

### Commissioner of insurance:

Jim Garner, Democratic 348  
Sandy Praeger, Republican 816

### State Representative, 120 District:

John Faber, Republican 987  
Bob Strevey, Democratic 224

### State board of education:

Connie Morris, Republican 628  
Sonny Rundell, write-in 390

### County office

### Commissioner:

Jane C.W. Brubaker, Rep. 201  
Sam Beeson, write-in 115

### Results in other counties

Phillips County: John Faber, 1,270;  
Bob Strevey, 658.

Connie Morris, 1,328; Sonny Rundell, 383.

Decatur County: John Faber, 836;  
Bob Strevey, 582.

Connie Morris, 988; Sonny Rundell, 207.

# TOYS

## Continued from Page 1

• Puzzles: 24 pieces, 60 pieces, 100 pieces, mini puzzles, etc.

• Arts and crafts supplies: Crayons, coloring books, doodle art kits, magic markers, cross stitch kits, Play Dough, etc.

• Paper products: Stationary, stickers, notebooks, etc.

• Balls: Footballs, soccer balls, basketballs, baseballs, ping pong balls, etc.

• Teen gifts: Perfume, cologne, jew-

elry, Swatch watches, radios, wallets, etc.

Batteries are also needed and they include: AAA, AA, C, D, 9-volt.

## Cash donations

There may be some people in the community who would like to help these children who are suffering but have no toys. Mr. Milliken said that cash donations are also accepted and will be used to fill in wherever there is a lack of appropriate gifts. For more information, contact Mr. Milliken.

# WEATHER

## Continued from Page 1

most have never stopped feeding cattle as there was just no grass in the pastures.

The pastures were looking a little better after around 3.5 inches of rain fell in the end of August and during September but it was not enough. The moisture did help the wheat crop get a good start.

However, unless there is good snowfall, this area will most likely be facing the same drought problems next summer.

"It has just been a tough year in agriculture," said Tim Burr, St. Francis Equity manager.

Weather Observer Woodcox gave the following report for the past week:

Date	High	Low	Prec.	Snow
Oct. 29	34	17	.60	1"
Oct. 30	24	18		
Oct. 31	24	16	T	
Nov. 1	27	18	T	
Nov. 2	36	30		
Nov. 3	40	22		
Nov. 4	46	31		

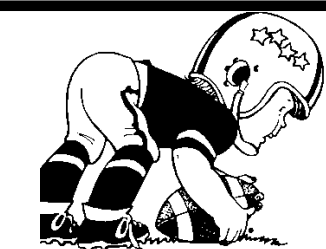
# Start a foundation

Have you ever applied for a grant? Ever had the opportunity to look for grant money in this area? If so, then you know how hard it is to find a foundation that serves northwest Kansas. Here's an idea...start your own foundation. Imagine how nice it would be to have a local foundation providing money for your cause. It's not as hard as you might think. Did you know that there are currently 158 foundations that will provide money for newly forming foundations? Join this workshop and find out more

Workshop instructor is Dr. Don Udell. Dr. Udell is a grant writer as well as reviewer of grants for several foundations. He has assisted many in the organization of a new foundation. He is in high demand from organizations across the nation.

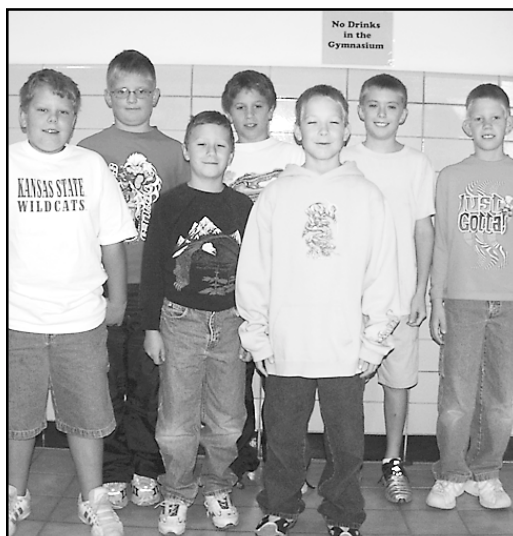
The three-day foundation workshop will be held Nov. 12, 13 and 14 in the conference room at the Thomas County Office complex on South Range, Colby.

For more information, please contact the Western Prairie Resource Conservation and Development at (785) 462-2602.

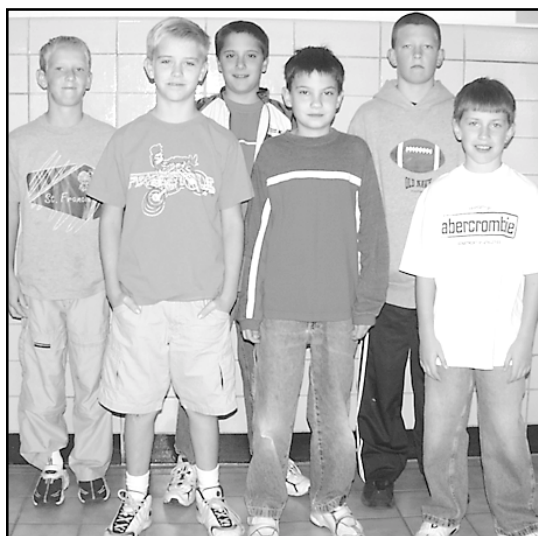


# 2002 Flag Football

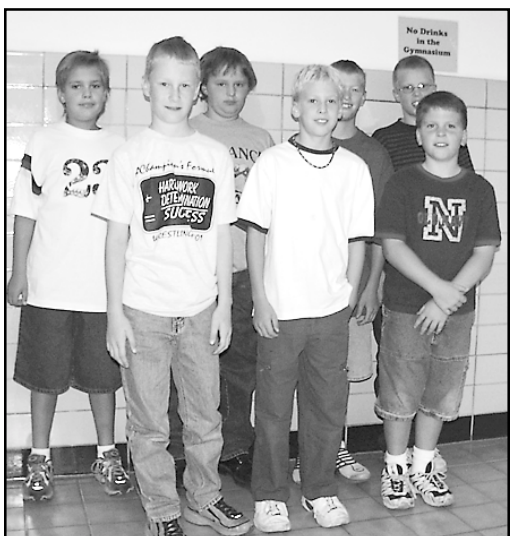
## Fourth through sixth grade



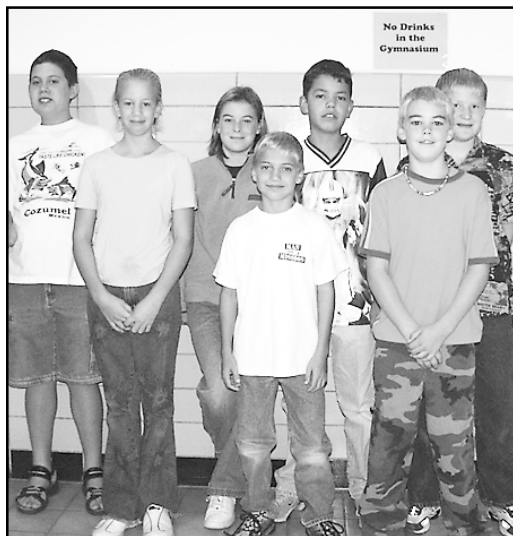
TEAM ONE: Left to right - Brooks Hobrock, Robbe Herman, Shawn Morris, Alex Jordan, Drew Zweggardt, Trent Raile and Darris Keller. Coaches: Clay Keller and Pete Raile.



TEAM TWO: Left to right - Alex Long, Grady Brunk, Jacob Riedel, Zach Zweggardt, Trent Kinen and Brett Lampe. Coaches: Rod Lampe and Ron Zweggardt.



TEAM THREE: Left to right - Benjamin Neitzel, David Stephen, Ethan Zweggardt, Garrett Figgins, Matt Raile, Brennan Van Allen and Adam Guthmiller. Coach: John Guthmiller



TEAM FOUR: Left to right - Shawn Warren, Taylor Spike, Sidnee Crabtree, Cody Sherlock, Jessie Pacheco, Trevor Reed and Garrett Zweggardt. Coaches: Dave Warren and Sam Crabtree.



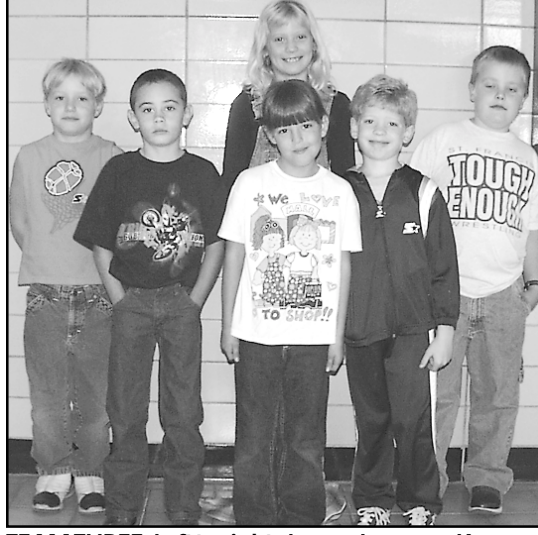
TEAM ONE: Left to right - Sage Gideon, Casey Keller, Jakalyn Van Allen, Kale Gideon, Lucas Raile, Tyler Lee and Josh Teeters. Coaches Matt Gideon and Clay Keller.



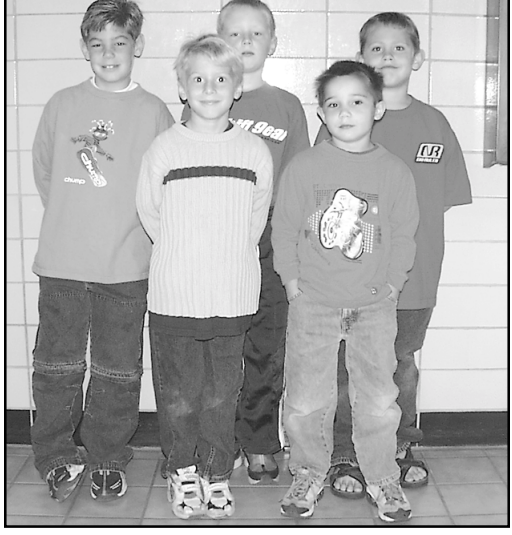
TEAM TWO: Left to right - Thomas Douthit, Zach Gienger, Dallas Reed, Billy Lee, Ty Zweggardt, Brock Zweggardt and Shakotah Blanka. Coaches Shawn Blanka and Keith Zweggardt.

## Brought to you by these sponsors

- All Pro Auto Parts
- Randy & Denise Andrist
- Bandel Home Center
- Bankwest-Of Kansas
- Bartlett Grain Co. L.P.
- Becky's Bierocks
- Bier's Hometown Store
- Brice's Auto Repair
- Bud & Eunice Burnham
- Burr Retail Liquor
- Craig & Nadja Button
- Scott "Hoagie" Carmichael
- Cheyenne Bowl/Dairy King
- Cheyenne Co. Clinic/Hospital
- Cheyenne Co. Feedyard
- Cheyenne Pharmacy Plus
- Crabtree Well Service
- Pat & Vicki Cress
- Theron & Carolyn Culwell
- Patrick & Brenda Delano
- Dankenbring Auto Body
- Diamond R Bar & Grill
- Dr. Melvin & Barb Dunn
- Farm Bureau Insurance
- Bruce & Sharon Feikert
- First National Bank
- Frewen Insurance Agency
- Fromholtz Body Shop
- Larry & Beth Gabel
- Goff Agency
- Good Samaritan Village
- Goodell Greenhouse & Floral
- Lezlie Hilt
- Homesteader Motel & Trailer Park
- Jaqua Abstract Co.
- Jenik Oil Co.
- K-Store
- Keller Auto Supply
- Perry & Paula Keller
- One More Year Ranch - Pete & Alice Kinen
- Knodel Funeral Home
- Don & Twila Kramer
- Krien Masonry Service
- Krien Pharmacy
- Krien Steel Buildings
- Lampe Hardware



TEAM THREE: Left to right - Logan Lawson, Keegan Sherlock, Katlin Figgins, Desirae Gomez, Derek Queen, Lucas Carmichael. Coaches: Hoagie Carmichael and Mike Sherlock.



TEAM FOUR: Left to right - Cameron Braun, Jonathan Meyer, Dillon Straub, Wyatt Landenberger, Scott Warren. Not pictured: Katlyn Braun and Cade Bracelin. Coaches: Christopher Bracelin and Dave Warren.

- Daryl & Keely Loyd
- L & W Andrist Ins. Agency LLC-
- Linda & Walt Linthacum
- Neitzel Insurance Service
- Mill & Seed Co.
- Owens True Value
- Park Hill Restaurant & Fiesta Room
- Pizza Hut
- Tim & Robyn Raile
- Ranch Food Direct
- Republican Valley Vet Clinic
- Bud & Marla Rice
- Tim & Teri Richard
- Ross Manufacturing
- Terry & Dr. Mary Beth Miller
- Marlin & Anabelle Rueb
- Randy & Rikki Rueb
- Sheriff Eddie Dankenbring
- St. Francis Equity
- St. Francis Feed Yard
- St. Francis Herald
- St. Francis Sand & Redi Mix
- St. Francis Tire & Service

- Sainty Super Foods
- Schultz's
- Silver Crest Farms
- Stuart's Jewelry
- Dr. Pat & Bonnie Stuart
- Sublette Truck Sales, Inc.
- Sunshine Travel
- Town & Country Clothing
- T.R. Services Inc. - Tom & Kathy Roelfs
- Tri-State Lumber & Tubing
- Unger Chiropractic
- Van Allen, Inc.
- Video Connection
- Video Kingdom
- Gale & Mary Walz
- Wiese Angus Farm - Kip & Deone Wiese
- Carl Werner
- Western Sprinklers
- Wheeler Equity
- Betty Jean Winston
- Greg & Julie Wolters
- Yost Farm Supply
- Yost Ford-Mercury
- Roger & Melissa Zweggardt



## COUNTRY FLAME CORN AND PELLET STOVES!!

Oo-Oz Spas & Stoves answer to Higher Fuel Bills!

The corn/pellet burning stove is a safe, easy to use heat source that will add beauty and warmth to any home!

### OO-OZ SPAS & STOVES

740 E. 4th • 800-794-3202 • 785-462-0053  
Colby, Kansas