

Pasture additives needed for cattle

By Dr. James I. Sprague
Livestock Nutritionist

The feed additives Rumensin and Bovatec are used for pasture cattle by many livestock operators. In my opinion, these valuable feed additives should be considered for wheat pasture, summer grass pastures, and even dry winter pastures for boosting gain.

Pasture minerals are a practical way to supply these additives, however pasture supplements can also be used. Even though these feed additives are used primarily in the feedlot, they have outstanding potential for pasture programs if handled properly.

One source of local information is your feed company representative. They can share their experiences and also lead you to producers that have used or are using these additives. Ionophores are often mixed with minerals fed free choice, or it can be added to pasture supplement. Minerals or supplements can also contain antibiotics as a preventative measure against foot rot and pinkeye.

What to expect

It is not unlikely to expect an increase in gain of close to eight to 12 percent, according to www.yourcattle.com. If cattle were expected to gain 200 pounds on a pasture program, 220 pounds of gain would be a goal for calculating the cost and returns expected. Your Elanco representative for Rumensin or the Alpharma Animal Health Company representatives for Bovatec are sources of test data for your evaluation.

Mode of action

Rumensin and Bovatec are

ionophore antibiotics. Their action is in the rumen and intestines of cattle. They stimulate gain by shifting the fermentation to a higher amount of energy for the cattle. The effect is even more dramatic for high roughage rations and pasture programs.

These two products work differently. Both will give coccidiosis control, but Rumensin is considered to be more effective for this problem. However, it appears it is easier to get the cattle started on a mineral with Bovatec than one with Rumensin.

There also is a second mode of action. When these ionophores are fed, there is less breakdown of natural feed protein to ammonia in the rumen, therefore more of the protein goes down to the lower gut for true protein digestion. We might expect less washy manure and dirty tailheads of cattle pasturing lush grass and wheat pasture if they are provided an ionophore.

Caution about horses

Both are toxic to horses if the horses eat a pasture supplement or mineral containing this feed additive. Bovatec is less toxic to horses than Rumensin. But caution should be exercised to prevent horses from eating either a feed supplement or mineral containing either of these ionophores.

This article and over 100 others on cattle health, nutrition, reproduction and a variety of other livestock-related topics can be found at <http://www.yourcattle.com>, where you can find information for your cattle!



SENIOR CITIZEN'S JANUARY AND FEBRUARY birthdays were celebrated Friday. Those getting ready to serve cake were: front row, (l to r) ErvaGene DeAragon, Alice Isernhagen, Ethyle Roelfs, Irene Andrist, Mary Lou

Abendschan, Dorine Zimbelman, Lucille Price and Harold Booker; back row: Jessie Schield, Art Krueger, Andrew Burr and Edwin Meyers.

Herald staff photo by Karen Krien

State urges region to use water wisely

State proposes voluntary irrigation transition program

Groundwater declines in northwestern Kansas, a priority issue for the Upper Republican Basin Advisory Committee, will be one of the discussion topics when members meet March 4 at the Colby Community College, Colby. The meeting begins at 1:30 p.m. in room 107 of the Student Union. The committee will receive an update on the status of the Ogallala-High Plains aquifer management activities and the newly proposed state legislation on an irrigation transition program.

The proposed irrigation transition program provides assistance grants to irrigators in priority areas who voluntarily agree to convert acres to dryland crop production or livestock grazing. The water right associated with those acres would be dismissed. The grants would help farmers who enroll to recoup some of their irrigation investment costs. The irrigation transition assistance grant program, if adopted, will help conserve and extend the life of the Ogallala-High Plains aquifer.

A tool, or model, to help pinpoint the areas of the High Plains-Ogallala aquifer most in need of conservation will be described by Diane Coe, Upper Republican BAC basin planner. The Hecox model, named after Gary Hecox, former graduate student at the University of Kansas, has been demonstrated to be accurate using currently avail-

able hydrological information. Hecox, now a private consultant in Tennessee, developed and proved the model in Groundwater management District No. 4.

Dave Barfield, Kansas Department of Agriculture's Division of Water Resources, will provide details on the Republican River Compact settlement with Nebraska.

Joe Harkins, acting director of the Kansas Water Office, will discuss the state's dynamic water resource planning and implementation process and current legislative initiatives. A bill was introduced to expand the state's bonding capacity to include financing of water-related capital development projects. He'll also highlight the key points of the Natural Resources legacy Alliance recommendations. To track water-related legislation, check out the Legislative page on the Kansas Water Office web site, www.kwo.org

For further information on the meeting, contact Diane Coe at the Kansas Water Office, 901 S. Kansas Ave., Topeka, KS 66612. You also may call (785) 296-3185 or send an e-mail to dcoe@kwo.state.ks.us. A meeting agenda is posted on the calendar page of the Kansas Water office web site. If accommodations are needed for persons with disabilities, please notify the Kansas Water Office at least two day priors to the meeting.

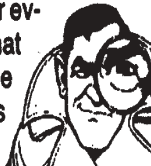


RUBEN AND BERNICE BANDEL celebrated their 60th Anniversary at the Senior Center.

Herald staff photo by Karen Krien

MISTAKES • We Know We Make Mistakes

Please remember that we attempt to include something for everyone within the pages of our newspaper. We realize that some folks enjoy finding fault and for those readers we thoughtfully include a socially acceptable number of errors within our publication!



Check it out ...

Booster Ads Saluting:

FFA and Wrestlers

Coming Soon ...

Separate pages commemorating —

- ★ Girl Scouts
- ★ Ag Week

Working Women's Supplement

This supplement is packed with ads featuring women who work outside of the home.

The Saint Francis Herald

P.O. Box 1050, St. Francis, KS 67756 • 785-332-3162

— and —

Bird City Times

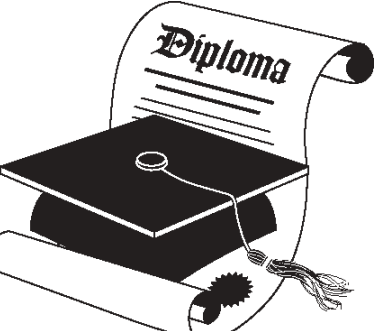
PO Box 220, Bird City, KS 67731 • 785-734-2659

Local girl graduates from college

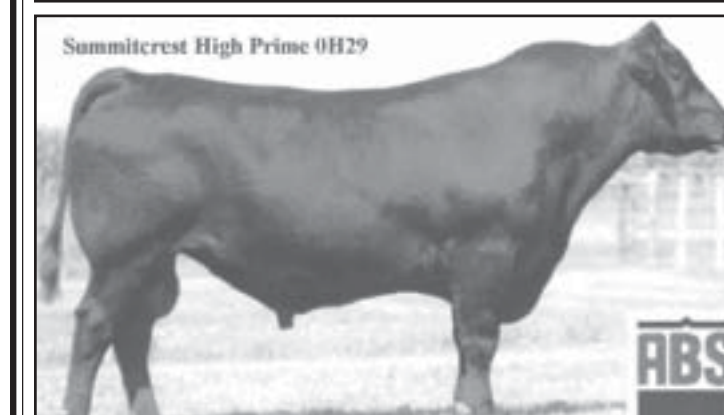
Barclay College

Barclay College, Haviland, is pleased to announce the graduating class of December and May.

Among those receiving a degree is Abigail Moore Howard of St. Francis. She received a bachelor of science degree in youth ministry. Howard graduated summa cum laude with a grade point average between 3.90 - 4.0.



Selling 65 Angus Bulls



Summitcrest High Prime 0H29

Calving ease, superior carcass bull

High Prime: One of the largest offerings of sons. Calving Ease EPD's. Ranks among the top 1% of proven sires for SG and among the top 2% for SB, a Marbling EPD among the top top 3% and a UREA EPD among the top 4%.

20 Sons Offered

Tuesday

March 9, 2004

1:00 p.m. CST

Midwest Sale Barn - North Barn - McCook, NE

*** Lunch Available***

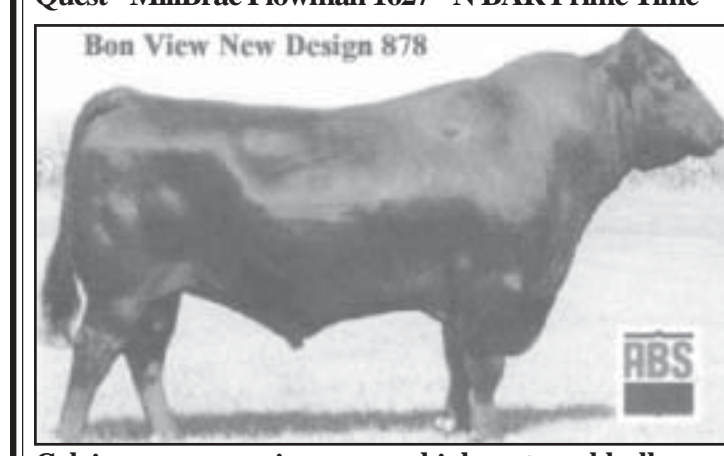
Blackrose Angus
Rob Spencer and Family
308-345-3377
308-340-3211

BB Angus
Chase Beeby and Family
308-895-2417
308-340-6438

Unique Opportunity: 40 head of A.I. Sired Females

List of Sires: Leachman Quest and New Design 878

Other Sires Represented at the sale include: Leachman Quest • MillBrae Plowman 1627 • N BAR Prime Time



Calving ease, superior carcass, high maternal bull