

Board agrees to sell three vehicles

By Karen Krien

The St. Francis Board of Education agreed to list three of the older school vehicles for sale when they met Monday evening. The sealed bid deadline for the buses will be Dec. 13.

Straub, bus manager, had studied the list of buses owned by the school. They determined there were three buses which the school no longer needed including: A 1994 35-passenger Chevrolet with 114,145 miles; a 1989 8-passenger Chevrolet with 122,714 miles; and the 1986 Indian 48-passenger Chevrolet.

Gene Dodd, board member, suggested the superintendent go to the internet to find the suggested price before the bids came in.

Superintendent Werner will send out invitations to bid to 10 to 15 companies and/or individuals who have either purchased or

bid on buses before. The bids will be opened at the December board meeting.

Board elections

The terms of three of the board members will end in June. These board members are: Bruce Feikert, District 1, position 4; Gene Dodd, District 2, position 5; and Pete Raile,

District 3, position 6.

The school elections will be held April 5. However, the filing deadline for board positions is Jan. 25 at noon. If necessary, a primary election may be held on March 1.

Superintendent Werner pointed out that See **VEHICLES** on Page 9A

Light Parade set for Nov. 25

By Karen Krien

With temperatures averaging in the 60s each day, it hasn't looked much like Christmas but the opening of the Christmas season is just a little over a week away.

The St. Francis Area Chamber of Commerce has a fantastic schedule for the holiday season with the big opening on the day after Thanksgiving. The "Light Parade," will start at 6 p.m. coming down Main Street. Businesses, organizations, families and individuals are already planning but many won't be assembling the float before Thanksgiving Day.

Gloria Bracelin said the Bracelin's gather for Thanksgiving dinner and when the leftovers are put away, they head out to the shop where they begin stringing lights and, it isn't until then, that they decide on just what is going to be on the float.

"Just lots of lights!" Mrs. Bracelin said.

See **PARADE** on Page 9A

Alumni Games are back!

They're back!! The St. Francis Area Chamber of Commerce has brought back the Alumni Games which will be played on Nov. 27 at the high school.

The women alumni will be participating in the volleyball games. There will be four teams making up the bracket. These games will begin at 5:30 p.m.

There will be two men's teams and game time is approximately 8 p.m.

See **GAMES** on Page 9A

Christmas On Us to give out \$1,500

By Karen Krien

There will be some people who will have a better Christmas season when their number is called during the grand prize Christmas On Us giveaway slated for Dec. 16. Businesses participating and making this drawing possible are featured in this week's *Saint Francis Herald* and *Bird City Times*.

A ticket will be given for each \$10 purchased in participating businesses. However, it is not necessary to make a purchase to claim a ticket. Those coming to *The Saint Francis Herald* office may each receive one

ticket per week.

Starting next week, people could be instant winners of \$50 scrip if they have the ticket which matches one of the numbers found in the Christmas On Us pages of advertisements. Each week, for three weeks, there will be numbers listed and any \$50 prizes not claimed will be given away in the grand drawing.

Be sure and save those tickets because they may be worth even more at the grand drawing. The person holding the first place ticket will find themselves with an extra \$1,000 in See **\$1,500** on Page 9A



ARE YOU FOR REAL???? Jessie Baxter had a look of surprise as he looked at the chicken at the Dusty Farmer Restaurant. Jessie is the son of Tim and Judy Baxter.

Herald staff photo by Casey McCormick

Drives bring in needed groceries

By Karen Krien

There is enough food for 58 Thanksgiving boxes to be filled before they are delivered this weekend.

"At the end of August, I was afraid I wouldn't have enough food coming in for Thanksgiving, let alone Christmas," said Reva Pownell, Food Pantry coordinator.

However, organizations, clubs, churches, schools and youth groups recognized the need. Food drives were organized and carried out. People generously gave from their cupboards or made special trips to the grocery stores to purchase items. The last load of food to come in was Monday when the St. Francis Community High School junior and senior classes brought in 30 boxes of food. Last week, the Teens for Christ group from Bird City collected items in that area and brought a load of food to the courthouse Food Pantry.

Ryan Mayer, St. Francis Super's. See **DRIVE** on Page 9A



SAINTY JUNIORS AND SENIORS had a drive for the Food Pantry and delivered 30 boxes to the courthouse Monday morning. Pictured: (l to r) Danielle McFarland, Brandi Barnhart, Amber Havel, Devin Dinkel, instructor; Julie Voeller. Standing on the truck is Nick Raile.

Herald staff photo by Karen Krien

Drug dog has new home in St. Francis

By Karen Krien

What to do with the county's drug dog was one of the matters discussed at the Monday Cheyenne County Commissioners' meeting. After talking to the present sheriff and the newly elected sheriff, the commissioners decided to keep the dog.

Sheriff Eddie Dankenbring said the dog has been with a trainer in Colby and is costing the county \$120 a week.

Newly elected sheriff Troy Gardner said he had talked to the trainer and learned that Bronson was an extremely smart dog. He offered to teach someone how to handle and train the dog for \$625. This is how much the county already owes the trainer for housing the dog, which makes the training free of charge.

Mr. Gardner recommended Tom Raile, who is with the St. Francis City law enforcement but is also

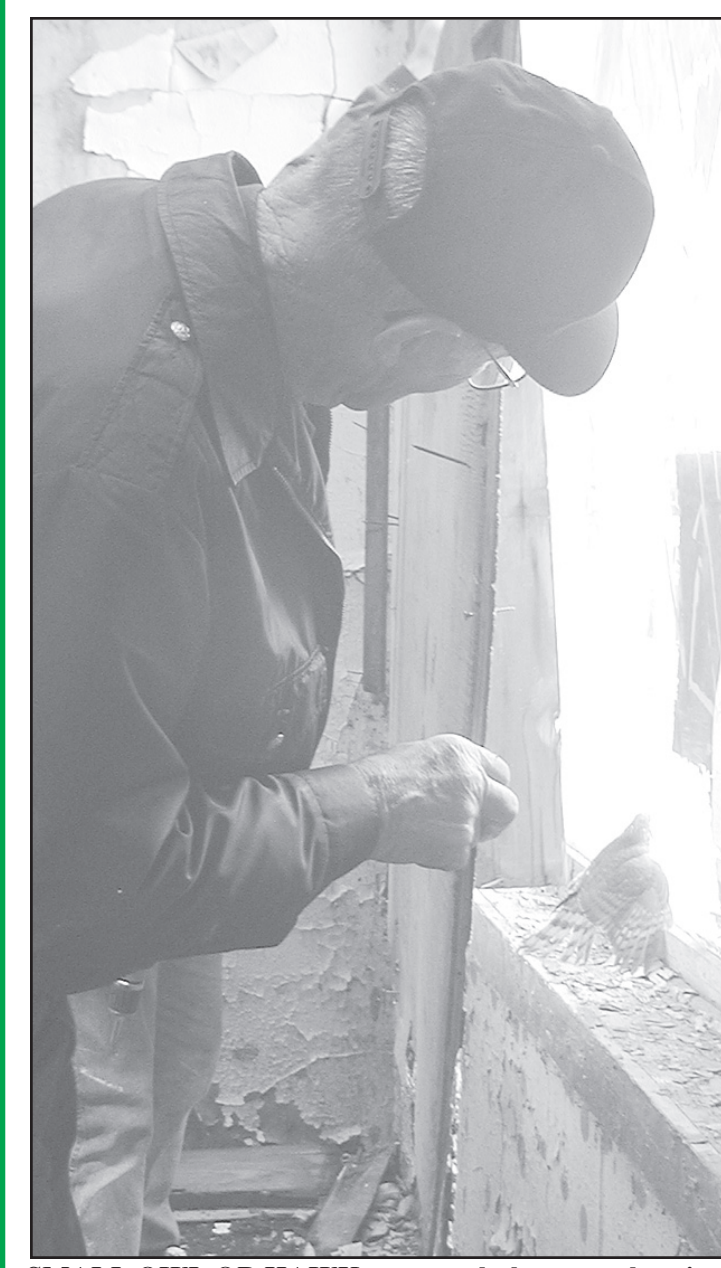
deputized by the sheriff, to take over the care and training of the drug dog.

After a brief discussion of liability, the commissioners agreed to have Officer Raile take over the training and care of the drug dog.

New ambulance purchase discussed

Larry Gabel, Emergency Medical Service director, and Larry Kness, representative for Rocky Mountain Emergency Vehicle, talked about

the purchase of a new ambulance. Mr. Kness said an ambulance would cost around \$109,000 and that the county would qualify for government discounts as well as Ford Fleet discounts. It might take up to 120 days for a new ambulance to arrive in the county. There will be enough money in the Ambulance Equipment Reserve Fund after the first of the year when an additional \$30,000 See **DOG** on Page 9A



SMALL OWL OR HAWK was caught between the window and a piece of plywood at the vacant building west of The Herald office. Many people came by The Herald to report the trapped bird. City police officer Norvin Anderson called Ron Wilson, who had a key and after some coaxing, the bird was free. Herald staff photo by Karen Krien

PARADE

Continued from Page 1A

The twinkling lights across Main Street and on the trees will light the way for the parade. Entries will have Christmas lights. Some will have themes, music, characters and figures while others will just be lights. Whatever, each entry will add to the first Christmas Light Parade.

There are two rules: 1) The only Santa in the parade is the Chamber's Santa; 2) do not throw candy or treats.

The committee is encouraging anyone planning to have a float or other entry to stop by either of the St. Francis banks, the Chamber office or *The Saint Francis Herald* office and fill out a form. Those entering at the last minute can also bring their form with them when they line up at 5:30 p.m. at the high school.

People's Choice Award

New this year will be the People's Choice Award. Anyone watching the parade should stop by Owens True Value, Schultz's, KM Clothier or Stevens' Kansas Territorial and pick up a ballot. Following the parade, take the ballot with the choice of the first place float number listed on the ballot. The winner of the Light Parade will be announced at the Alumni Games held at the high school on Nov. 27.

The winner will be awarded a "traveling plaque" which will have their name engraved on a plate and displayed. Next year, the plaque will return to the Chamber and will be awarded to the 2005 winner.

Treasure Hunt

The Chamber Christmas Committee has brought back the annual

Treasure Hunt and numbers will be distributed in the Nov. 25 issue of *The Saint Francis Herald*. Numbers will be posted on the windows and doors of the 19 participating businesses. The numbers will be posted at 4 p.m. on Nov. 26 and people having matching numbers will receive a prize from that business where the number is found.

Don't throw the Treasure Hunt numbers away because, if the number has not been claimed, it could be the winning number on Dec. 16 when new numbers are displayed. On that day, the numbers will be displayed all day starting at 9 a.m.

Santa

On Nov. 26, Santa will be at his hut located in the old city office building on Main Street where he will check out the Christmas wishes of children.

There will be room for parents to take pictures.

Elf Train

The St. Francis Volunteer Firemen will also have the Elf Train going for the evening after their trip through the parade. Children will have a chance to ride up and down Main Street with the pick up and drop off point being at Santa's Hut.

Soup supper

The senior citizens will be hosting a soup supper at the senior center at Washington and River streets. They will be serving chili soup, cheesy potato soup and homemade cinnamon rolls from 5 to 7 p.m.

More holiday activities

Other Chamber activities throughout the season will include:

- The highlight of the season will be the drawings of the Chamber and Christmas On Us scrip money. The evening will begin at 5:30 p.m. Between the drawings, winners of the coloring contest and the Christmas Lighting Contest will be announced.

Following the drawings, people will be able to enjoy a cup of hot chili (free-will offerings will be welcomed). Santa will also be at the old city office building to hear those final wishes before Christmas.

Stores will be open later to allow people to fill their Christmas lists. Remember to shop at home. These businesses have stocked their shelves for the holiday season and are depending on everyone to do as much shopping at home as they possibly can.

Look for more information about the Chamber Christmas activities in future issues of *The Saint Francis Herald*.

DOG

Continued from Page 1A

will be added to the amount already in the fund.

At the last special meeting of the commissioners on Nov. 5, the Bird City Emergency Medical Technicians and Director Gabel had discussed putting dual tires on the present Bird City ambulance because the technicians thought there was too much weight on the ambulance. Director Gabel had presented an estimate cost of between \$4,000 and \$5,000 to have the dual tires put on.

Those at the last Emergency Medical Technician meeting which included 20 to 22 technicians unanimously agreed to not put on the dual tires and put that money into a new ambulance. The old ambulance is a 1999 model. The new ambulance will be able to carry a heavier load and will have better fuel mileage and easier maintenance.

Road and bridge report

Dave Flemming, road and bridge supervisor, mentioned that diesel fuel is expensive. He went on to say that the culverts on the North River Road will cost \$2,740 each and the project will take two culverts.

The Bi-annual bridge inspection would be coming up soon and he had contacted Penco to do the inspection at \$45 per bridge.

Commissioner Tim Raile had been contacted by several county residents concerning roads including a curve near the Joe Neilan place which Mark Mills thought was too flat and needed to be "banked" or sloped. Mr. Mills also mentioned the ruts in the road by the Ben Leibbrandt farm. The supervisor said the road had been elevated and work will be done to that area this fall.

Stan Krien had asked about gravel for his drive. Commissioner Raile had advised him to talk to the supervisor.

While Supervisor Flemming was visiting with the commissioners, the Road Closing Hearing was held with no one protesting. He also asked for executive session to discuss personnel. When they came out of the closed session, it was announced that Cody Beeson had asked to be hired as part-time instead of full-time.

Supervisor Flemming said he had sold a mower for \$1,050 and a scraper for \$7,500 at the sale held by Western Auction.

Coordinator asks for \$9,800

Carol Redding, Cheyenne County Development Corporation coordinator, asked for the same amount of money, \$9,800, given to the Corporation last year. The commissioners told her that they had already budgeted that amount.

She said she has been pursuing several different options in bringing business to Cheyenne County including an organic dairy and had gone so far as to contact Kansas State University offering the county as a demo site for such a dairy. She has been gathering information on "wind farming" and has talked to a utility company in Florida to see if there was interest in buying the harnessed energy.

Other duties include writing a column for *The Saint Francis Herald* and *Bird City Times* and working with the New Generation Fund coordinator in Bird City. She has also attended several workshops and will be attending another next week.

She and the commissioners talked about giving benefits to entice businesses, companies and industries to come to the county. It was noted that several counties who have given the benefits to businesses have found that the business leaves after the benefits run out.

She said that she loves promoting Cheyenne County and welcomes ideas to help better the county.

In other business

In other business:

- Tim Carson, representative with

VEHICLES

Continued from Page 1A

Mr. Dodd had moved from District 2, position 5, and was now living in District 1, position 4. By law, Mr. Dodd could complete his term but when his term is up, he will need to file in his district if he wishes to continue as a board member. If this happens and Mr. Feikert also files in the district which he now serves, they will be running against each other on the same ticket.

Superintendent Werner encouraged each board member to file again as having the same board members adds stability to the board.

Building projects

Superintendent Werner said there are several construction projects which he had been looking into. Before he went any further, he was presenting the projects to the board to see what they wanted to do.

The first project was to add

metal bleachers or, if the present metal bleachers would not fit with new bleachers, purchase four sets of bleachers for the west side of the football field. With the bleachers, a new press box would be built.

The new bleachers would be designated as the "home bleachers" and would be nearer to the rest rooms and the concession stand. More importantly, the old press box, built at least 25 years ago, would be replaced.

Superintendent Werner, principal Scott Carmichael and Mr. Dodd also commented on the "wobbly" condition of the box which needed to be replaced.

The other project was to construct a metal building south of the bus barn. The building would house the new activity bus along with other buses. It would also be used to store track equipment.

The board gave consensus for the superintendent to pursue the two projects and they will be discussed

at future meetings.

In other business

In other business:

- Principal Larry Gabel commended the excellent job Jean Ann Confer and her students had done in presenting the Veterans Day program.

The audit report prepared by Adams, Brown, Berens and Ball of Colby had several suggestions but no errors were cited. Superintendent Werner said he and others concerned will be working on correcting some of the suggestions.

The board went into executive session to discuss the procedures to be followed in reducing staff for the next school year. No decision was made following coming out of the private session.

Next meeting

The next meeting of the school board will be held at 7:30 on Dec. 13 in the board room at the high school.

\$1,500

Continued from Page 1A

The second place winner will have \$100 in scrip.

Each week, participating merchants will be advertising sales and specials in the ads on the Christmas On Us pages so while people are looking for matching numbers, be sure to take a good look at the specials.

Those finding matching num-

bers will need to bring them into *The Herald* office to claim their \$50 in scrip and it is necessary to bring in tickets on or before Monday because if the scrip is not given away by Monday evening, that scrip money will be carried over to the next week when another number drawn to be placed in a Christmas On Us ad. A total of \$400 in scrip will be given

away during the holiday season and can be spent in one of the following participating businesses:

- Bier's Hometown Store
- Burr Liquor
- Cheyenne Bowl and Dairy King
- Dusty Farmer
- Goodell Greenhouse and Floral
- Krien Pharmacy
- K-Store
- Owens True Value
- Parkhill Restaurant
- St. Francis Super's
- Schultz's
- St. Francis Equity
- Saint Francis Herald

The contest will end at noon on Dec. 16 and the grand prize drawing will be held that evening.

DRIVE

Continued from Page 1A

and Les Doggett, P & L Meat Market, have been very helpful in getting the Food Pantry good prices on turkey and ham and other shopping for the Pantry has also been done at Bird City Hometown Market.

Money donations are always welcome but there is still a need for sweet potatoes (in cans) and cranberry sauce. The First National Bank has a Food Pantry account.

The boxes will be assembled on Thursday and Friday and delivered throughout the county over the weekend so people will have time to prepare the food for Thanksgiving.

"If someone knows of a person or family who needs a Thanksgiving basket or if an individual or family is in need and doesn't receive a box, please contact the sheriff's office at 785-332-8880," Mrs. Pownell said.

GAMES

Continued from Page 1A

The teams are drawn and chances are, the teams will be fairly equal in "winded" players. The name of the game is "fun" and there should be lots of it along with the action.

Gloria Bracelin, Chamber secretary, said players can register as late as the day of the games but there will not be a T-shirt for the player that

night. However, it will be available later.

Those entering by Monday will still be able to have their Alumni Games shirt by game night.

To enter, call the Chamber office (785-332-2961) or fill out the entry form located in this week's *Herald* and send to the Chamber office.



Published in The Saint Francis Herald, St. Francis, Kansas, and the Bird City Times, Bird City, Kansas, Thursdays, Nov. 11, Nov. 18 and Nov. 25. (46-48)

2004 TAX LEVIES FOR CHEYENNE COUNTY, KANSAS USED TO FUND THE 2005 BUDGETS

Prepared by Cheyenne County Clerk
Taxable Valuation of Cheyenne County is \$38,575,739
(Levies shown are taxes per \$1,000.00 valuation)

Comparison of 2003 and 2004 levies and valuations:					
State	2003		2004		Difference
	Valuation	Levy	Valuation	Levy	
State	\$35,951,970	1.500	\$38,575,739	1.500	
County	\$35,951,970		\$38,575,739		
General		25.060		19.680	-5.380
Road & Bridge		12.669		11.408	-1.261
Bridge Building		0.062		2.143	2.081
Noxious Weed		0.349		0.591	0.242
Hospital		6.347		5.511	-0.836
Bond & Interest		7.457		7.221	-0.236
Total		51.944		46.554	-5.390

2003 Valuations (Dollars)		2004 Valuation		Levy	
Bird City	2,310,262	29,571	2,315,742	29,696	0.125
St. Francis	6,377,206	28,821	6,492,296	28,508	-0.313
USD 103	17,921,548	33.322	18,015,571	34.850	1.528
USD 297	24,435,602	34.152	26,978,281	34.297	-0.145
Cemetery Dist 1	12,118,743	0.815	12,183,841	0.811	-0.004
Cemetery Dist 2	23,833,227	0.998	26,391,898	0.885	-0.113
Rural Fire 1	26,277,394	1.484	28,771,214	1.393	-0.091
Rural Fire 3	987,108	1.592	996,487	1.526	-0.066
NWKS Library	27,264,502	0.965	29,767,701	0.930	-0.035

Levies of Taxing Units		
State Levies	K.S.A.	Levy
KS Ed. Bldg.	76-6b01	1.000
State Institutions	76-6b04	0.500
Total		1.500

County Levies		
K.S.A.	Levy	
General	79-1946	19.680
Road & Bridge	68-5,101	11.408
Bridge Building	68-1135	2.143
Noxious Weed	2-1318	0.591
Bond & Interest	19-15,116	5.511
Hospital	12-183	7.221
Total		46.554

USD 103		
K.S.A.	Levy	
Supp. General	72-6435	9.350
General	72-6431	20.000
Recreation	12-1927	1.500
Capital Outlay	72-8801	4.000
Total		34.850

Cemetery		
K.S.A.	Levy	
Cemetery District 1	80-932	0.811
Cemetery District 2	80-932	0.885

Rural Fire		
K.S.A.	Levy	
CN County RF 1	19-3610	1.393

City of Bird City		
K.S.A.	Levy	
General	79-1953	27.633
Library	79-5032	2.063
Total		29.696

City of St. Francis		
K.S.A.	Levy	
General	79-5032	24.714
Library	79-5032	3.794
Total		28.508

USD 297		
K.S.A.	Levy	
Supp. General	72-6435	9.297
General	72-6431	20.000
Recreation	12-1927	1.000
Capital Outlay	72-8801	4.000
Total		34.297

NWKS Library		
K.S.A.	Levy	
General	12-1230	0.900
Employee Benefits	12-16,102	0.030
Total		0.930

001 City of Bird City	
Valuation	\$2,315,742
State	Rural Fire 1
County	46.554
City	29.696
USD 103	34.850
Cemetery 1	0.811
Total	111.911

017 Calhoun Township	
Valuation	\$336,819
State	1.500
County	46.554
USD 103	34.850
Cemetery 2	0.885
Rural Fire 1	1.393
Library	0.930
Total	86.038

049 Orlando Township	
Valuation	\$253,097
State	1.500
County	46.554
USD 297	34.297
Cemetery 1	0.811
Rural Fire 1	1.393
Library	0.930
Total	85.485

USD 103 Valuation	
Valuation	\$10,804,607
Cheyenne County	\$11,597,458
Rawlins County	6,044,136
Total USD 103	\$16,848,743

USD 297 Valuation	
Valuation	\$24,737,850
General Fund	\$11,597,458
Other Funds	6,418,113
Total USD 297	\$26,978,281

002 City of St. Francis	
Valuation	\$6,492,296
State	1.500
County	46.554
City	28.508
USD 297	34.297
Cemetery 2	0.885
Total	111.744

018 Calhoun Township	
Valuation	\$773,025
State	1.500
County	46.554
USD 297	34.297
Cemetery 2	0.885
Rural Fire 1	1.393
Library	0.930
Total	85.559

034 Wano Township	
Valuation	\$191,745
State	1.500
County	46.554
USD 297	34.297
Cemetery 1	0.811
Rural Fire 1	1.393
Library	0.930
Total	85.485

050 Orlando Township	
Valuation	\$193,241
State	1.500
County	46.554
USD 103	34.850
Cemetery 1	0.811
Rural Fire 1	1.393
Library	0.930
Total	86.038