

Classifieds

Classifieds

Deadline for advertising:
Monday at 5 p.m.
Call us at 785-332-3162
or 785-734-2659

Classified ads — Printed in *The St. Francis Herald* & *The Bird City Times*.
Cards of Thanks first ten words free, 20¢ for each additional word.
Poetry is charged at the rate of \$1.30 per line.
\$3.00 service charge is billed monthly for open accounts.

JUST IN TIME FOR CHRISTMAS! \$30 mail-in rebate on Sirius Satellite Radio for your car or home. Details at Video Kingdom, 414 W. Washington, St. Francis. 50c

STUFF YOUR STOCKINGS with homemade candy and gifts. Candy Cane Lane at the Koinonia Coffee House, 216 W. Washington, St. Francis, 4 to 6 p.m. on Thursday. 50c

MAKE IT A MERRY CHRISTMAS. 24 months with 24 equal payments and NO INTEREST! See Video Kingdom for details, 414 W. Washington, St. Francis. 50c

guests or vacations with *The St. Francis Herald* and *Bird City Times* readers. Call 785-332-3162 or 785-734-2659 with news items.

DROP YOUR film and or digital media at Krien Pharmacy for fast quality photos. 50-03*

FROM BOTTOM TO TOP, home and building, painting, remodels, and repairs, inside and out from A to Z, 15 years experience. David Rogers, 785-332-3077, St. Francis. 46tfn

TRUCK LETTERING, Call 1-800-886-2423, pin stripping, signs of all kinds including magnetic, vinyl, over 25 years of experience. Hot Brush, 800-886-2423, fax 785-734-2459 204 W. 4th, Bird City, KS 67731. 31tfn

FOUND
STRAY BLACK BULL, if not claimed will be sold at Sheriff sale on Dec 15. Contact person, 785-332-3194. Bull is at the St. Francis Sale Barn. 49-50c

LOST
METAL STAND, contact 785-332-2441. 49-50*

LIVESTOCK FOR SALE
PUREBRED CHAROLAIS bulls and heifers, yearlings and 2 year-olds. 785-675-3475. 50-53*

FOR RENT
THE BENKELMAN HOUSING AUTHORITY (Rainbow Fountain Park) is taking applications for one bedroom apartments to rent. Utilities and maintenance included in rent. Call for details: 308-423-2125. 47-50c

ONE BEDROOM Apartment, utilities and laundry facilities, no pets, non-smoking. 785-332-2186. 45tfn

FOR SALE
WATERING WEEDLESS WONDER TM. Great Christmas gift! Holiday Special \$35, Care-free Gardner, 301 W. Jackson, Monday-Friday, 9 a.m - 5 p.m. 50c

FOR SALE or trade, fixer-up house in Haigler. For more information call 308-297-3234. 50*

AKC REGISTERED German Shepherd puppies, black and tan, first shots, ready to go. 785-332-2456. 49-52*

MOTORCYCLE leather apparel, jackets, vests, chaps, gloves, boots, tool bags, saddlebags. Great prices! The Great Outdoors. Atwood, 785-626-9425. 49-50*

IN MEMORY
In Loving Memory of my sister Phyllis who passed away Dec. 8, 2003
A sister is life's special gift. She plays a loving part. In many lifelong memories. That matter to your heart. A sister is life's special gift, And there could never be, A better or more cherished one, Than the sister life gave me. Sadly missed, Eloise

THANK YOU
Thank you to the Cheyenne County rural fire department for their quick response in helping put out the tractor fire. Gary Yonkey
Thank you for the cards and gifts for our 60th anniversary. Otto and Sylvia Bandel

The St. Francis Lions Club wishes to thank those who supported our annual Pancake Day. We would especially like to thank Leibbrandt Family Pork for their generous donation of the sausage and to the Dusty Farmer Restaurant for preparing it for us; to Randy Dinkel (Mill & Seed) who donated the pancake mix and to Pat Rose for the grill brick. We also want to thank coordinator Roger Pownell and his hard working Lion team who made the day a success.

Special thanks to all who donated or participated in the benefit potluck held at Peace Lutheran Church on Nov. 21, held by Thrivent Financial for Lutherans Chapter #30317. Your support of the Cheyenne County Food Pantry is very much appreciated.

The Cheyenne County Hospital would like to thank the family of Lydia Stermer for their generous memorial contribution to the hospital. Your continued support is greatly appreciated!

Thank you to Karen, the boys, Rob, Roland, Nadine, Verle, Dave, Mike, Joe and Lynn for helping me since my accident and surgery. A special thanks to Dr. Miller and the entire staff for the excellent care I received. Thanks for all the prayers, cards, calls, visits, pie and rides. Doug

Thank you for the consideration and help received. I thank Father Gibson, doctors, hospital, ambulance and clinic staff, my family and friends. I also thank the home health care for the follow up. Roberta O'Leary

Thanks to my family and all who attended my 90th birthday coffee held Sunday morning, Nov. 28 at the Lutheran Church. Thanks for the many cards I received. All were appreciated. Clarence Busse

Notices

OPEN EVERY EVENING until 7 p.m. now until Dec. 23. Closing Dec. 24 at 4:30 p.m. Open Sunday's Dec. 12 and 19 from 1 to 4 p.m. Stevens' Kansas Territorial, 212 W. Washington, St. Francis. 50-52c

DESIGNS BY DAWN Open House, Dec. 15, 9 a.m. - 7 p.m. 10% off all products, 117 W. Second St., Bird City. 50c

NOTICE

AD RATES

For Line Classified Ads are as follows:
1-Wk. 10 words - \$5.50
20¢ ea. additional word
2-Wks. 10 words - \$10.50
40¢ ea. additional word
3 to 4 Wks. 10 words - \$11.95
45¢ ea. additional word
(10 word minimum. Line Classified must be in our office no later than 5 p.m. on Monday)

Country Advocate
\$6.00/per week - 10 words
25¢ ea. additional word
Ads must be in the office by 12:00 noon on Friday.

Display (box) Ads
Display (box) Ads for St. Francis and Bird City deadline is 5 p.m. on Monday.
St. Francis Herald \$5.10 per column in. Bird City Times \$4.30 per column in. Both Papers \$8.14 per column in. Classified Display \$8.30 per col. in.

The St. Francis Herald
Bird City Times
785-332-3162 or 785-734-2659

Services

SHARE YOUR NEWS of house
Our Business Is Exhausting
St. Francis Tire & Service
785-332-3366

LOOKING FOR WORK?
SER's employment and training specialists may be able to help you find a permanent full-time job in the field of your choice. They can also assist with the training to start a new career.
To be eligible, you need to have done work in any of the following in the last 2 year:
Farms, ranches, harvest fields, greenhouses, feed yards, grain elevators or other agricultural related jobs.
SER is a non-profit organization and our service is free.
For more information Call 785-623-4016 or Toll-free 877-723-4016 In Colby/Goodland Call 620-275-2181 or Toll-free 877-275-2181 Hablamos Español

VIOXX

If you had a heart attack, stroke or blood clots while using Vioxx, call:
VERLIN A. INGRAM ~ ATTORNEY
316-262-2018
727 North Waco, Suite 175 • Wichita, KS 67203

nwkansas.com

INTERNET Access as low as \$14.92/month
Tech help Available
Hookup Same Day as Signup
The Saint Francis Herald
•P.O. Box 1050 • St. Francis • 785-332-3162
The world. As close as your phone. 785-332-3162

The Stamps

You Can't Wait to Get Your Hands On.
• PRE-INKED (NO STAMP PAD NEEDED)
• CLEANER, EASIER TO USE
• 50,000 IMPRESSIONS BEFORE RE-INKING
• DOZENS OF MODELS

• Endorsement Stamps • Adress Stamps
• Rotary Daters • Inspection Stamps
• Jumbo Stamps • Motivational Stamps
• Notary Stamps
The Saint Francis Herald
310 W. Washington • St. Francis, Kan. 67756 • 785-332-3162
sfherald@nwkansas.com

ABSOLUTE LAND AUCTION

480± ACRES EXCELLENT CHEYENNE CO., KAN. DRYLAND
Leon & Shirley Brethower, Sellers
Tract 1 NW¼ Sec. 28, 3-37 160 Ac. Dryland
Tract 2 NW¼ Sec. 21, 3-37 160 Ac. Dryland
Tract 3 SE¼ Sec. 17, 3-37 160 Ac. Dryland
THURSDAY, JAN. 20 ♦ 10:00 CT
American Legion Hall
W. Bressler Ave., Bird City, KS
LOCATION OF LAND: Approx. 2 E. & 1 N. of Bird City, KS.
TERMS: 15% down day of sale, balance at closing, on or before February 24, 2005. Cost of title insurance to be split.
Call 800-476-7185 for sale bill! Rodney Shay, Listing Broker

SHAY REALTY, Inc.

Rodney W. Shay, Auctioneer
Diana Argabright, Auctioneer
Ryan W. Shay, Auctioneer
Reese W. Shay, Auctioneer
785-332-2566
107 E. Washington, St. Francis, KS
Atwood, KS • Wray, CO
More info. @ www.shayrealty.com

CFI announces plan to provide SATELLITE RADIO

to CFI Drivers and Owner Operators
800-CFI-DRIVE • www.cfidrive.com

HAULING IN NO TIME

Schneider National provides COMPANY-PAID CDL TRAINING for qualified candidates, so you can get on the road and start hauling in the cash. Call for opportunities in your area!
INDEPENDENT DRIVERS • EXPERIENCED DRIVERS • OWNER OPERATORS
• No experience necessary
• \$31,500-\$39,500 1st year (inexperience)
• \$45,000-\$54,000/year in 4 years
• Low-cost medical & dental insurance; free vision & life
• Freedom of the open road
1-800-44-PRIDE
(1-800-447-7433)
Mon-Fri 7am-6pm, Sat & Sun 9am-5pm (Central Time)
BCE MFVDV
www.schneiderjobs.com

VIOXX BEXTRA or CELEBREX

Urgent news for people who took
Many VIOXX, users suffered strokes, heart attacks, heart failure, blood clots and even death. If you took BEXTRA, or CELEBREX, you might also have been at risk for a serious cardiovascular health problem. If you or a loved one had any of these problems, call us now toll free at 1-800-THE-EAGLE for a free consultation. We practice law only in Arizona but associate with lawyers throughout the U.S.
GOLDBERG & OSBORNE
1-800-THE-EAGLE
(1-800-843-3245)
www.1800theeagle.com
Open 7 days a week

Become a part of one of the most well-known brands in the world.
To learn more about this unprecedented franchise opportunity, visit www.theupsstore.com or call 1-877-623-7253.
The UPS Store
\$50K cash requirement ©2004 Mail Boxes Etc., Inc.

VIOXX/BEXTRA

NO FEE FOR FIRST VISIT
Ryan A. Krebs, M.D., J.D.
Doctor-Lawyer in Full-time Law Practice
Timothy R. Cappolino, P.C.
Board Certified Civil Trial Advocate By the National Board of Trial Advocacy.
MAIN OFFICE: Cameron, Texas
1-800-460-0606
www.defectivedrugslaw.com

Your wedding deserves the finest and most beautifully designed invitations!
See our large selection of sample invitations and response cards. We will be more than happy to help you with your special wording.
Order Invitations Now for Your Wedding

The Saint Francis Herald

310 W. Washington • St. Francis, KS • 785-332-3162

Great Christmas Idea!

Registered Yellow Lab Puppies
Good hunters or pets.
Excellent blood line
785-332-3370 leave message

REAL ESTATE FOR SALE

- NEW LISTING - 320 acres located 3 miles south of the Neb. line on Kan. Hwy. 161, 2 miles west and 1 mile south. Consists of 126 ac. of CRP and 194 ac. of native grass.
- RANCH - 1880 acres w/live water, creek bottom cropland and a hunting lodge. Pasture should carry 100 a.u. with productive alfalfa cropland for wintering. Excellent hunting facility as well as a workable livestock operation. Not grazed in 2004. DCP \$6,044 annually next 3 years.
- COUNTRY LOCATION. Nice country 4 bedroom, 2 bath home with 50'x80' machine shed on small acreage surrounded by cedar tree windbreak. Located 4 west and 1/2 south of Bird City, don't miss this opportunity.
- 409 S. Francis - UNDER CONTACT
- 409 Parkway. Well maintained 3 bedroom brick home located in a very nice neighborhood. Has an attached 2 car garage, full finished basement and underground sprinkler system which add to the amenities of this lovely home. Call us now to see it.
- 110 E. Spencer. PRICE REDUCED - 1 1/2 story 5 bedrooms, 2 baths and 2,671 sq. ft., of living area. Large kitchen, living and dining rooms as well as a TV room. Remodeled and updated it offers comfort and beauty.
- 221 W. Webster, St. Francis. Attractive 6 room home w/3 bedrooms, 775 sq. ft. plus a partial finished basement and detached garage on corner lot. Has newer furnace, carpeting, water heater. Refrigerator, stove, washer and dryer included. \$34,000.
- NEW LISTING - 402 N. College. Cozy one bedroom 1 bedroom well maintained home on corner lot with one car garage/shop. \$15,000.
- 419 E. 5th, Bird City - Available again - Beautifully landscaped 1 1/2 story 3 bedroom home, 2 car finished garage with heat & bath. \$75,000
- 104 W. 6th - Bird City. 3 bedroom bungalow w/2 car garage on large corner lot. Priced to sell. \$22,000

Check with us if you are planning to sell in the near future. We have had several inquiries.
CHECK WITH US FOR OTHER LISTINGS
Visit our web site at: www.donlove realestateinc.com
Don Love, Broker 785-332-2921
Sondra Bracelin, Salesperson 785-332-3041
P.O. Box 723 • 116 E. Washington St. Francis, KS
Don Love Real Estate, Inc.

Funding changes made for group

The Northwest Local Environmental Protection Group has had major funding changes. As of Jan. 1, the Group will charge a \$50 "letter of intent" fee which is similar to a permit fee. The fee will be good for only one year. The letter of intent is required on the installation or modification of all septic systems within the Northwest Local Environmental Protection Group area. The Group will continue to offer free private water testing to private individuals only. Those who sell,

purchase or refinance any property that requires an inspection will be charged a \$90 inspection fee. This inspection includes site evaluations on well and septic systems and testing the water. The Group will also charge a \$25 fee for child care and foster care inspections.

For more information, call the local health department or either of the Northwest Local Environmental Protection Group offices at Hill City, 785-421-2769 or Colby, 785-462-8636.

Trivia from the 1500s

Trivia from the 1500s

- Most people got married in June because they took their yearly bath in May and still smelled pretty good by June. However, they were starting to smell, so brides carried a bouquet of flowers to hide the body odor.
- Baths consisted of a big tub filled with hot water. The man of the house had the privilege of the nice clean water, then all the other sons and men, then the women and finally the children — last of all the babies. By then the water was so dirty you could actually lose someone in it hence the saying, "Don't throw the baby out with the bath water."
- Houses had thatched roofs —

thick straw, piled high, with no wood underneath. It was the only place for animals to get warm, so all the dogs, cats and other small animals (mice rats, and bugs) lived in the roof. When it rained it became slippery, and sometimes the animals would slip and fall off the roof; hence the saying, "It's raining cats and dogs."

- There was nothing to stop things from falling into the house. This posed a real problem in the bedroom where bugs and other droppings could really mess up your nice clean bed. Hence, a bed with big posts and a sheet hung over the top afforded some protection. That's how canopy beds came into existence.

Public Notices

Petition filed in court praying for determination of property

Published in The Saint Francis Herald, St. Francis, Kansas, and the Bird City Times, Bird City, Kansas, Thursdays December 2, December 9 and December 16, 2004. VIGNERY & MASON L.L.C., 214 E. 10th P.O. Box 767 Goodland, Kansas 67735 Telephone: 785-890-6588 IN THE DISTRICT COURT OF CHEYENNE COUNTY, KANSAS' FILED PURSUANT TO CHAPTER 59 OF THE KANSAS STATUTES ANNOTATED IN THE MATTER OF THE ESTATE OF TREV PURCELL, a/k/a TREV A. PURCELL, deceased

Cheyenne County, Kansas, to-wit: An undivided one-half interest in the Northeast Quarter (NE1/4) of Section Twenty-two (22), Township Three (3) South, Range Forty-one (41), West of the 6th P.M., according to the United States Government Survey thereof, and all other property, real and personal, or interest therein, owned by the decedent at the time of his death; and you are required to file your written defenses thereto on or before the 22nd day of December, 2004, at 10:00 o'clock a.m., on said day in said court in the City of St. Francis, in Cheyenne County, Kansas, at which time and place said cause will be heard. Should you fail therein, judgment and decree will be entered in due course upon said petition.

KAYLENE S. PURCELL
Petitioner

Vignery & Mason, L.L.C
Jeffery A. Mason, #11665
P.O. Box 767
Goodland, KS 67735
(785) 890-6588
Attorneys for the Petitioner

Ordinance attesting to an tax revenues increase for budget

Published in The Saint Francis Herald, St. Francis, Kansas, Thursday, December 9, 2004.

ORDINANCE NO. 528
AN ORDINANCE ATTESTING TO AN INCREASE IN TAX REVENUES FOR BUDGET YEAR 2005 FOR THE CITY OF ST. FRANCIS

WHEREAS, the City of St Francis must continue to provide services to protect the health, safety, and welfare of the citizens of this community; and

WHEREAS, the cost of providing essential services to the citizens of this city continues to increase.

NOW THEREFORE, be it ordained by the Governing Body of the City of St Francis:

Section One. In accordance with state law, the City of St Francis has scheduled a public hearing and has prepared the proposed budget nec-

essary to fund city services from January 1, 2005 until December 31, 2005.

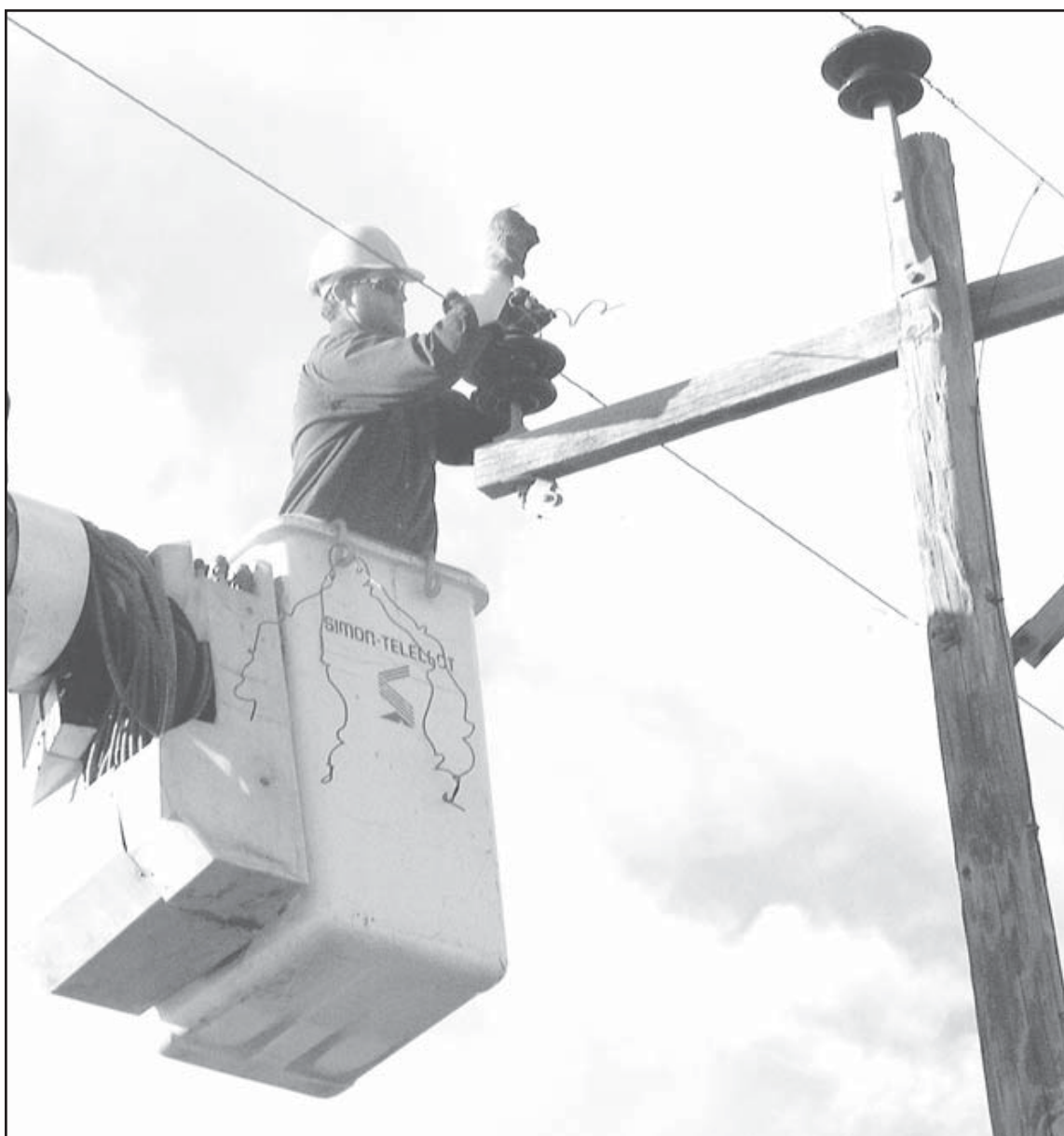
Section Two. After careful public deliberations, the governing body has determined that in order to maintain the public services that are essential for the citizens of this city, it will be necessary to budget property tax revenues in an amount exceeding the levy in the 2004 budget by \$353.

Section Three. This ordinance shall take effect after publication once in the official city newspaper.

Passed and approved by the Governing Body on this 7th day of December 2004.

Scott Schultz
Mayor

ATTEST:
Mary Lampe
City Clerk
(SEAL)



RYAN CULWELL of Prairie Land Electric is one of the linesmen working to upgrade power in Cheyenne County. Herald staff photos by Casey McCormick

Substation to replace three

By Casey McCormick

The Prairie Land Electric crew is busy with work on a new substation which will upgrade service for customers in northwest Kansas.

"The new station will be a good benefit," Prairie Land line supervisor Earl Hansen said. "Outage time should go down and the quality of service will be better."

The new station will be located on the Cheyenne County and Rawlins county lines, a mile north of U.S. 36.

"There is a big transmission line going through there and the new station will replace three older substations," Mr. Hansen said.

The three stations being replaced are 1950 vintage types which are in need of upgrading. As well as the new substation, many miles of new line will be needed to connect service stations to the substation.

"The job should take about 12 to 15 months to complete," Mr. Hansen said. "There will be a lot of line built out of it."

Two of the line men working along U.S. 36 this week are Marshall Hesse of the Bird City area and Ryan Culwell of St. Francis. They are working a 3-mile stretch of line which will get new poles as well as a new neutral line.

"The weather hasn't been too bad to work in," Marshall Hesse said, "But the ditches are pretty muddy in the afternoons."



A QUICK TRIP to the top. Marshall Hesse makes it look easy as he soon reaches the top of the power pole.

Electric company to pay members

The board of trustees of Prairie Land Electric Cooperative recently approved a capital credit retirement totaling \$611,000. Checks were mailed to members on Dec. 1 for patronage they had with Prairie Land Electric since 1985. In the past five years, the company has paid more than \$2.6 million in capital credit refunds.

In addition to the capital credit pay-out, Prairie Land Electric is-

ssues monthly billing credits of 1/2-per kilowatt hour that will total over \$500,000 in 2004. Since 1999, Prairie Land members have received over \$5.4 million in capital credit refunds and direct billing credits.

Prairie Land's strong financial strength over the past few years has made monthly credits and year-end pay-outs possible. Gilbert Berland, president of Prairie Land Electric Cooperative, said that "...as a mem-

ber-owned electric cooperative, our mission is to provide our members with good quality service and, at the same time, keep rates as low as possible consistent with sound business practices. We are happy to return dividends to our member-owners at a time when prices for natural gas, propane and fuel oil are on the rise.

Aviators historic flights

Pilot Steve Fossett, considering a historic flight from Salina, is among many aviators in Kansas history to propose such feats. Fossett and his GlobalFlyer, scheduled for takeoff Jan. 4 at what was Salina's Schilling Air Force Base, could follow in the flight path of many other aviators including Cheyenne County's Ron Evans.

Evans was an astronaut and commander of the pilot ship for Apollo 17. He was born in St. Francis on Nov. 10, 1933, and died on April 5, 1990, in Scottsdale, Ariz., of a heart attack.

Mr. Evans attended grade school in St. Francis until he graduated from the eighth grade. People remembered him as an ambitious Scout and loved to hunt, fish and camp. He had determination and initiative, delivering the early morning Denver Post and helping his father in the creamery.

In 1947, he began high school in Topeka where he was a scholar as well as an athlete. He attended the University of Kansas where he received a bachelor degree in electrical engineering. In 1964, he received a master's in aeronautical engineering from the U.S. Naval Postgraduate School.

On Dec. 6, 1972, Captain Evans was the command module pilot for Apollo 17 and manned the mission to the moon. Completing his first space flight, Captain Evans logged 301 hours and 51 minutes in space and 1 hour and six minutes of that time was spent in extra vehicular activities.

Captain Evans retired from the Navy in 1976 with 21 years of service and remained active as a NASA astronaut.

At his death, he was survived by his wife Jan and two children.

Albin K. Longren was the first to fly his Topeka I biplane in 1911. He traveled around the state demonstrating his aircraft. In 1915 Longren was injured at take-off during a flight exhibition at the Dickinson County Fair in Abilene. His Topeka aviation company continued to manufacture and sell aircraft until 1926. His fifth biplane is on display at the Kansas Museum of History and his papers, relating to the early aircraft industry, are among the collections at the Center for Historical Research.

Other Kansans besides Evans and Longren who made history in aviation and aeronautics in Kansas include: Walter and Olive Ann Beech, Phillip Billard, Clyde Cessna, Amelia Earhart, Joe Engle, Steve Hawley, E. M. Laird, Glenn Martin, J. M. Moellendick, and Lloyd Stearman. Their histories along with others in aviation can be found in the collections of the Kansas State Historical Society in Topeka.

Fun Facts

- In 10 minutes, a hurricane releases more energy than all the world's nuclear weapons combined.
- Average lifespan of major league baseball: five pitches.
- The cigarette lighter was invented before the match.
- Five Jell-O flavors that flopped: celery, coffee, cola, apple, and chocolate.
- Average age of the Rolling Stones: 50.6.
- Elephants can't jump. Every other mammal can.

Kansas Classified Ad Network

Business Opportunity
ALL CASH CANDY ROUTE. Do you earn \$800 in a day? Your own local candy route. Includes 30 Machines and Candy All for \$9,995. 1-800-814-6077

Career Opportunity
Up To \$4,000 Weekly! Exciting Weekly Paycheck! Written Guarantee! 11 year nationwide company now hiring! Easy work sending out our simple one page brochure! Free postage, supplies! Awesome Bonuses! Free Information! Call Now! 1-800-242-0363 Ext. 3800.

Educational
MISSOURI WELDING INSTITUTE, INC. Nevada, Missouri. Become a Certified Pipe and Structural Welder. Earn top pay in 18 weeks. Many companies seek our graduates. 1-800-667-5885.

For Sale

FREE 4-ROOM DIRECTV SYSTEM includes standard installation. 3 MONTHS FREE HBO & CINEMAX! Access to over 225 channels! Limited time offer. S&H. Restrictions apply. 1-800-217-4578.

Wayne Willis Wildlife Prints for Christmas. Direct from Willis Estate. "Flying W". 1-620-583-5839. willisart@kans.com

Help Wanted
City of Osborne seeking qualified Economic Development Director. Send resume and references by December 30, 2004. Osborne, ED, 130 N. First, Osborne, KS 67473. EOE. Government Jobs! WILDLIFE / POSTAL \$16.51 TO \$58.00 Per hour. Full Benefits. Paid Training. Call for application and exam information. NO EXPERIENCE NECESSARY. Fee Required. TOLL

FREE 1-888-269-6090 ext. 719 PHATJOB. Hiring sharp outgoing people to TRAVEL US representing sport, fashion & news publications. Expense paid training, base guarantee. Daily-weekly-monthly bonuses. Trans & hotel provided, return trip guaranteed. Call today start tomorrow (800)282-0381.

Help Wanted/Part-Time
Kansas Army National Guard - P/T positions available. Get skills to put your career on track. We offer free training, college money, steady pay. 1-800-GO-GUARD. www.1800GOGUARD.com
Help Wanted/Truck Driver
ADVANCE YOUR DRIVING CAREER! Increase in Pay Package. Contractors & Company Needed. Flatbed - Refrigerated - Tanker. Over-the-Road. Some Regional. Commercial Driver's License Training. 1-800-771-6318

www.primeinc.com.
A T T E N T I O N
drivers: IMMEDIATE POSITIONS AVAILABLE! Start up to 37¢. Great benefits & equipment! Teams Welcome! Gainey Transportation 1-800-287-0376.

COVENANT DRIVER-TRANSPORT. Teams and Solos check out our new pay plan. Owner operators, experienced drivers, solos, teams, and graduate students. Call 1-888-MOREPAY (1-888-667-3729) Equal Opportunity Employer.
Drivers- All the Miles You Want! Many Regional Run Options. New Big Pay Increases. Low Cost CDL Training. SWIFT TRANSPORTATION 1-800-284-8785. www.SwiftTruckingJobs.com
FedEx Ground: TEAM Independ-

ent Contractor positions available at Kansas City hub. No Singles/Solos Need Apply. Start .93/mile, \$1.25/gallon nationwide diesel price, 100% drop and hook. Weekly home time. Tolls & Permits paid. Many discount programs. Call linehaul recruiting 913-441-7549 M-F 8a-4p.

Job Opportunities
NOW HIRING for 2004 Postal Jobs. \$17.50-\$59/hr. Paid Training. Full Benefits. No Experience Necessary. Green Card OK. Call 1-866-895-3696 ext. 363

Legal Services
Social Security disability claims; Saunders & Saunders Attorneys at Law. Norecovery, No fee! 1-800-259-8548.

Musical Instruments
PIANO SALE! Over 100 pianos on sale now! Too many specials to list here... Hurry in for best deals! Free

delivery, tuning, warranty, 7% APR financing WAC. Mid-America Piano, 1-800-950-3774. www.piano4u.com

Spots for Sale
HOT TUB BUYERS, buy direct from manufacturer, Save \$1500-3000. 15 Styles -\$2195-\$4995. We deliver. Price List, Information 1-800-869-0406. GOODLIFESPA.COM

Sporting Goods
POOL TABLE - 8ft. 1" slate, leather pockets, beautiful wood cabinet. Brand New! In Box Retail \$3K, Sell \$1450. 316-806-2150.
Steel Buildings For Sale
"SPECIAL" 48' Aluminum Storage Container 8'6" wide, 9'6" tall, 3876 cubic feet of storage. \$2,650. Delivery in Kansas not to exceed \$490.00. Other sizes available. 1-785-655-9430. www.chuckhenry.com.