

# Extension office may consolidate

By Karen Krien

The Cheyenne County Commissioners met Friday to discuss consolidating three county extension offices.

Dan O'Brien, area Extension director; Tye Faulkender, county Extension director; and Cindy Burr and Christy Wurm, board members, met with the commissioners to carry on the discussion of consolidating the Extension program with Wallace and Sherman counties. Wallace and Sherman counties are already consolidated as the Sunflower Extension District.

Mr. O'Brien explained that, when counties join together, the director/agent and office help can do a better job of educating. That they will not spread "so thin" when they are trying to cover all areas.

Director Faulkender will continue to be directly involved in Cheyenne County 4-H work.

"There will be more sharing of responsibilities, less pressure and, if there would be a personal health or other type of problem occur, there is a team of people to cover for them," Mr. O'Brien said.

"However, agents will work outside of their current county and support other counties in their

specialized 4-H areas."

If the three-county District does form, one office will be designated to handle the finances and accounting. There will be four representative will be elected from each county to serve on the District Extension Board. However, at first, the commissioners will appoint the first four board members.

The District Board and Extension Director will adopt an annual budget which includes a public budget hearing and any other requirements. There will be a minimum tax levy of 2.5 mills.

The county can withdrawn from the Extension District but must be done prior to July 1 of any year. All property which has been transferred will go back to the county.

If the commissioners agree to go with the District formation, there will be a resolution published in The Herald and Times in October and/or November. A petition period which will allow those protesting the formation to file petitions. If there are no valid petitions, an approval from the Attorney General will need to be made, probably between February and April. The formation of the District must be completed in June and the new District will be established in July.



**LIFE PRAYER WALK** — Several people gathered at the Museum to walk together. Those pictured walking Sunday were Glori Milne, Sara Schield, Dave Roberson, Kim Queen, Elmer Kellner, Dorothy Kellner, Norman Morrow and Lanny DeGood. Herald staff photo by Karen Krien

## Agritourism meeting to be held in October

A meeting to inform western Kansas residents and stakeholders about the exciting concept of Agritourism will be held at the Grandstand Meeting room from 9 a.m. to 3 p.m. on Monday at the Finney County Fairgrounds, Garden City, Monday, Oct. 12.

The agenda will feature Ben Allen, K-State agritourism leader, to speak on

"Hobby or Enterprise, Looking at Product, Marketing and Financial Management;" Dave Mace, Kansas Business Development Specialist, "Factors Motivating Agritourism Entrepreneurs;" Charles Lee, K-State Extension Wildlife Specialist, "Natural Resource Income Opportunities;" John Geier, Farmers Union Ins., "Insurance Needs for an Agritourism Enterprise;" Scott Nichols, president of Wild West

Country, "Tourism Alliances of SW Kansas;" and an agritourism producer panel of family members who have ventured out and started their own enterprises.

### What is Agritourism?

In simple terms, agritourism is the crossroads of tourism and agriculture: when the public visits working farms, ranches or wineries to buy products, enjoy entertainment, participate in activities, shop in a country store, eat a meal or make overnight stays.

### What fun activities can visitors do on a farm or ranch?

Visiting a farm, ranch or winery offers wonderful, unique experiences. Picking peaches or apples in a beautiful orchard, roping a calf or stomping grapes are just a few of the fun and fabulous activities waiting for visitors.

### Why is Agritourism growing so fast?

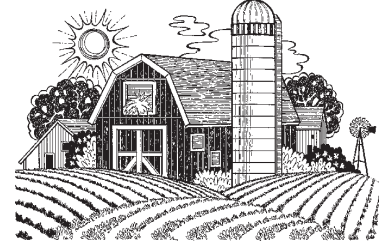
People want a new experience — an escape from the stress of traffic jams, office cubicles and carpooling! Parents want their children to know how food is grown and that milk actually comes from a cow — not a carton! Families enjoy a drive to the country and spending the day together, especially in these times.

### Why do farmers participate in agritourism?

Today, most family farms face serious economic challenges from foreign competition and large, corporate farms. Their earnings on commodities and livestock may not even cover production costs. But farmers who sell directly to the public — through fruit stands and farm country stores — and also add spe-

cial activities for visitors, find they can continue farming and make a profit. Agritourism is actually saving thousands of small farms from extinction.

Contact the Cheyenne County Development Corporation if you plan to attend, and pick up a brochure. For complete registration of a small fee, please contact the Finney County Extension office at 785-272-3670, located at 501 S. 9th Street, Garden City.

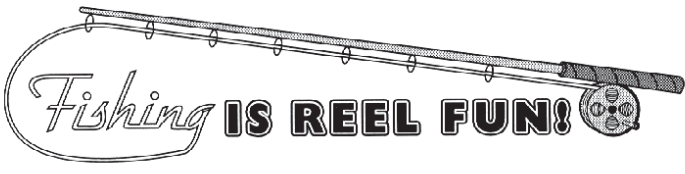


## Outdoors with Chuck

Water and fire have always held an important position in our existence. Not only for the obvious reasons, survival and growth, but also for the fascination we have with them. I love to listen to a stream go by, and to stare into an evening campfire. I was saddened by a walk I took the other day, along several

miles of our Republican River. When I moved here 18 years ago, it was a viable stream, supporting fish and wildlife. Now it is, and has been for a while, mostly dry. Makes one wonder about our overall environment, and what we have done to it.

From "Hunters" Chuck kribbs



## Obituaries

### Beatrice E. Rieb

July 28, 1925 - Sept. 23, 2005

Beatrice E. Rieb died on Friday, Sept. 23, 2005, in the Cheyenne County Hospital after a brief illness.

Bea was born on July 28, 1925, in Clay Center, Kan., to Gertrude Evelyn Tuggle and Henry Noble Tuggle. She was baptized and confirmed in the First Methodist Church in Clay Center, and she completed her elementary and high school education there. After graduating from high school, she attended Kansas State College (now Kansas State University) in Manhattan, majoring in home economics. While at Kansas State, Bea was a member of the Kappa Kappa Gamma sorority.

In the spring of 1947, Bea met the love of her life, Jack Rieb of St. Francis, who was studying mechanical engineering. Jack graduated from Kansas State in the spring of 1948 and returned to St. Francis to team up with his father Rudy at Rieb Motor Company, the local dealership for Minneapolis Moline farm machinery and Chrysler and Plymouth automobiles. In August 1948, Bea graduated with honors,

and the couple proceeded with their wedding plans. They were married Oct. 1, 1948, in the First Methodist Church in Clay Center. After honeymooning in New Orleans, they settled into their home in St. Francis.

In the years that followed, Bea managed the home and took care of their three children: Douglas, Deborah, and Mark. She was also an active member of United Methodist Women, American Association of University Women, Kansas State University Alumni Association, and P. E. O., of which she was a 50-year member. She was a den mother in Cub Scouts, served as education director for the Methodist Church, and, for about 25 years, volunteered at the Good Samaritan Village.

In 1966, Jack left Rieb Motor Company and opened Rieb Skogmo, a dry goods store. With Bea's assistance, he managed that business until 1990 when he sold the store and retired.

After Jack's retirement, the couple filled their days traveling, playing golf at Riverside, attending local and regional cultural events, and getting together with their long-

time friends in the community. Bea and Jack remained active members of United Methodist Church and played in the Truly Amazing Bells bell choir. But perhaps Bea's greatest joy came from time spent with her six grandchildren: reading aloud, drawing pictures, playing hide-and-seek and charades and Tripoli, attending hockey games, choral concerts, basketball games, football games, Christmas ice shows, and countless other events in which her grandchildren participated.

Bea is survived by Jack, her husband of 57 years; by her son Douglas of Fort Collins, Colo., his wife Marianne, and their children, Jesse and Emma; daughter Deborah of Leon, and her two children, Jacob and Lauren; son Mark of Watertown, S.D., his wife Susan, and their sons, Chris and Brian; sister Elaine Gareis of West Lafayette, Ind., and her husband George; and nine nieces and nephews, including Carol Wolters and Greg Wolters of St. Francis.

A memorial service was held for Bea on Monday, Sept. 26, at the United Methodist Church in St.

Francis, with Reverend Morita Truman officiating.

Memorials may be made to the Cheyenne County Hospital, the Good Samaritan Village, or the United Methodist Church.

### Laverda "Verdie"

Arlene Karp

Dec. 16, 1928 - Sept. 21, 2005

LaVerda "Verdie" Arlene Karp, 76, died Monday, Sept. 21, 2005, at Community Hospital in McCook.

She was born to Sumner C. and Fern E. (Salade) Payne on December 16, 1928 in McCook. She spent her early childhood years around Bird City, Kans. Then moved back

to this area and graduated from Red Willow High School in 1948.

She married Frederick Payne in Cambridge on Sept. 14, 1953. To this union one son and three daughters were born.

She enjoyed her family, playing cards, cooking and all sports.

Preceding her in death were her parents; her husband in 1982; two brothers, Byron Elton and Dale in infancy; a sister, Verdeen and husband Marty Schuman; and a sister-in-law, Rose Mary Payne.

Survivors include: a son, David Karp and wife Julia of McCook; daughters, Donna Marie Wickizer

of Cambridge, Barbara Jean Mayo of Kearney and Linda Kathleen Dethlefsen of McCook; brothers, Truman L. Payne of Colorado Springs, Colo.; a sister, Lynda F. Richardson and husband Terry of Aberdeen, S. Dak.; nine grandchildren; one great-grandchild; and special friend Rodger Scott.

Memorials are being accepted in her name.

Funeral services were Friday at Carpenter Breland Funeral Home in McCook with Jerry Beckenhauer officiating. Burial will be in the Indianola Cemetery.

## PAST REFLECTIONS

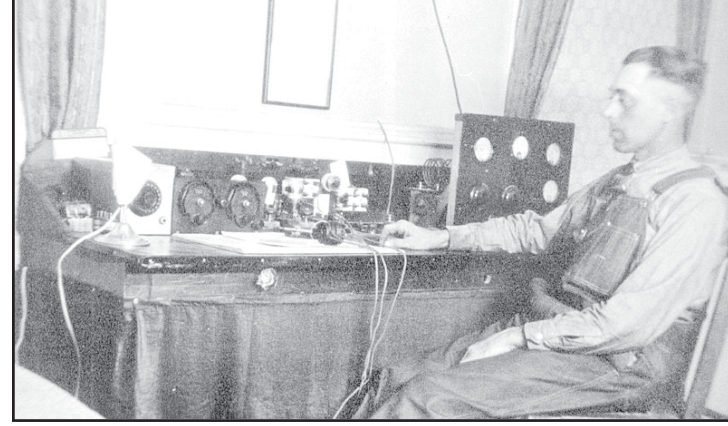


Photo courtesy of Tobe Zweygardt



1928  
Ted Roelfs with his short wave radio.  
WGHL - Home Station

St. Francis  
785-332-2113  
Haigler  
308-297-3223

## St. Francis EQUITY

Don't Miss Out On These Savings!!

# GOING-OUT-OF-BUSINESS SALE

Tri-State Lumber  
Plumbing/Electrical/Insulation

785-332-2731  
Downtown St. Francis, KS

ALL FASTENERS — 50% OFF  
Nuts, Bolts, Nails & Screws

This Week!!!!  
30% OFF ALL Inventory

Prices will be lowered every week till they are gone!  
Don't wait and miss out on some great buys.



SAT, OCT 15, 2005 10:00 a.m. CT

## HOUSEHOLD AUCTION

Auction Site: Western Auction & Real Estate Auction Pavilion, W. HWY 36, St. Francis, Ks

FURNITURE - ANTIQUES & COLLECTIBLES - FISHING EQUIP - TOOLS

Duncan Phyfe table & 4 chairs; Buffet; Roll top desk; 3 cushion couch & Love Seat; 2 Quasar console color TV's; 12 place setting Prairie Green Frankoma w/platter & soup Tureen & additional pieces; Old mantle clock; 2 Rockers; Coffee table & Sev. end tables; Cedar chest; 5 piece sterling tea set; Lots of Nic Nacs; Many Christmas decorations, Old cards, Valentines; 2 card tables & chairs; Rocker recliner; Dresser & chest of drawers; 2 couches & Love Seat; Computer desk; 3 Halogen floor lamps & Sev. table lamps; Kitchen cabinet; 3 Bar; Sev. OLD Dolls; Lots of OLD Metal Toys; 4 Drawers; Hoover bac w/attachments; 10 Fishing poles - Rods & Reel; Bamboo fishing pole.

Fishing tackle box - Lots of tackle - Sev. reels & lures; Minnow buckets, lanterns, kerosene stove; Old wood rocking chair; Zeph hand crank ice cream freezer; Hoover Steam vac; Kenmore chest deep freezer 6 cu ft; Patio swing & patio set; Old Coca Cola cooler; 2 coal buckets; 2 Alum. step ladders; Scythe; Old glass canning jars w/clamp lids; Scotts fertilizer spreader; Tru Test Shp Rototiller w/front tines; Self-propelled push mower w/B&S; Chain saw, Cross cut saw, Skil saw, 9" Rockwell table saw; Elec. sander levels, wrenches; Misc. hand tools; 10 amp battery charger; Misc. antiques & collectibles; Baby bed; Table & 2 chairs; 2 Microwaves; Bradley dolls w/boxes.

Sev. crocks including - 8 gal. Western w/lid, 8 gal. Red Wing, 6 gal. Red Wing, 2 - 2 gal. Red Wing, 4 gal. Red Wing; 1 gal. Snuf Crock, 2 gal. Western Jug from Western Denver Pottery; Smaller packing Jars - Minnesaota, 1 gal. Jug & Jars.

Sev. yardsticks - Hancock Motor CO, Touselee Ford Sales,

Zimelman Motor Co, Great Western Tire, Miller Automotive Supply all of St. Francis & Stasser Garage, Haigler, NE.; Old Metal Toys - Structo Livestock Truck, Dry Van, Grain Trailer, Wyandotte Truck w/tandem axle Freight Van, Tonka Clam, Marx Outer City Truck, Ertl Dirt Mover Truck, Tonka Mi T Cement Mixer, Doepke Road Grader Model Toy, 20 Misc Die Cast Toys, Fisher Price Toys - Wooden General Hauling No 733 Horse w/ Cart, Bumble Bee, Pull Dog, Pull Dog, Wood Calling Hen, Pig; 1966 Series International Pedal Tractor; Erector set; American Bricks in original container; American Logs in original container; Nickel Plate/Cast Iron tape dispenser - National Package Sealer Model 207, # 6387; Lots of old games & toys; Marx Elec. Pinball game; Popeye & Olive Oil full face masks - Good Condition.

Sev. Halloween masks & costume pieces - Lennie Kravits; Elec. basketball game in original box; Sev. Poosh-M-Up Jr. games; Sev. OLD Children's Books; Lots of Old Yardsticks; Waltham Wrist Watch; 2 boxes Hamilton Watch Main Springs; Tootsie toys; Hubbleys toys (die cast); Haigler - St Francis Equity dust pan; Monarch tricycle; Leather boxing gloves & Everlast boxing bag; Hull pottery - Butterfly Lavage wall hanging & Butterfly bowl; Hull Ruyocopia # 64 & W 10 - 11; Eco Brody vases & Hull vase & Royal Copely vases; McCoy vases, McCoy planter; Fire King Peach Luster; Brush planter & Haeger planters; Mule cups; Cincinnati, OH Commemorative Plate; Glass cake plate; Old Cashmon Whiskey bottle - Denver, Co.; Acrobat Jimmy BY Arnold of West Germany; Keepsake 3/4ct Diamond ring

Terms: Announcements made day of sale take precedence over printed material. All items to be settled for before removal. Cash or Good Check. Not responsible for theft or accident. Lunch to be served.

Paul & Mardell DeGood Estate & Etal, Sellers



W. Hwy. 36 - P.O. Box 928  
St. Francis, Kansas 67756  
785.332.8990

Betty L. Petersen, Broker & Appraiser  
www.westernauctionandrealstate.com  
- From Concept to Completion -

Skip Petersen, Sales Agent & Auctioneer - 785.332.2368  
Jeff Raile, Personal Property Auctioneer - 785.332.8951  
Robin A. Witzel, Assoc. Broker, Appraiser & Auctioneer - 785.332.5586

Brett Petersen, Sales Agent & Auctioneer

Licensed in Kansas, Colorado, and Nebraska  
for your Real Estate needs!