

FARM RESTORATION — The former home and barn of Fred Waters, is being restored by his great-granddaughter, Janet and Stan Carmen. Photo courtesy of Janet Carmen

# Couple move to Cheyenne County, buy ancestor's home

Editor's note: Stan and Janet (Evins) Carmen recently moved back to Cheyenne County and were fortunate to have the opportunity to purchase Mrs. Carmen's great-grandfather's home south of St. Francis. Mrs. Carmen thinks back on how it must have been when the house was new and how her great-grandmother must have felt moving in.

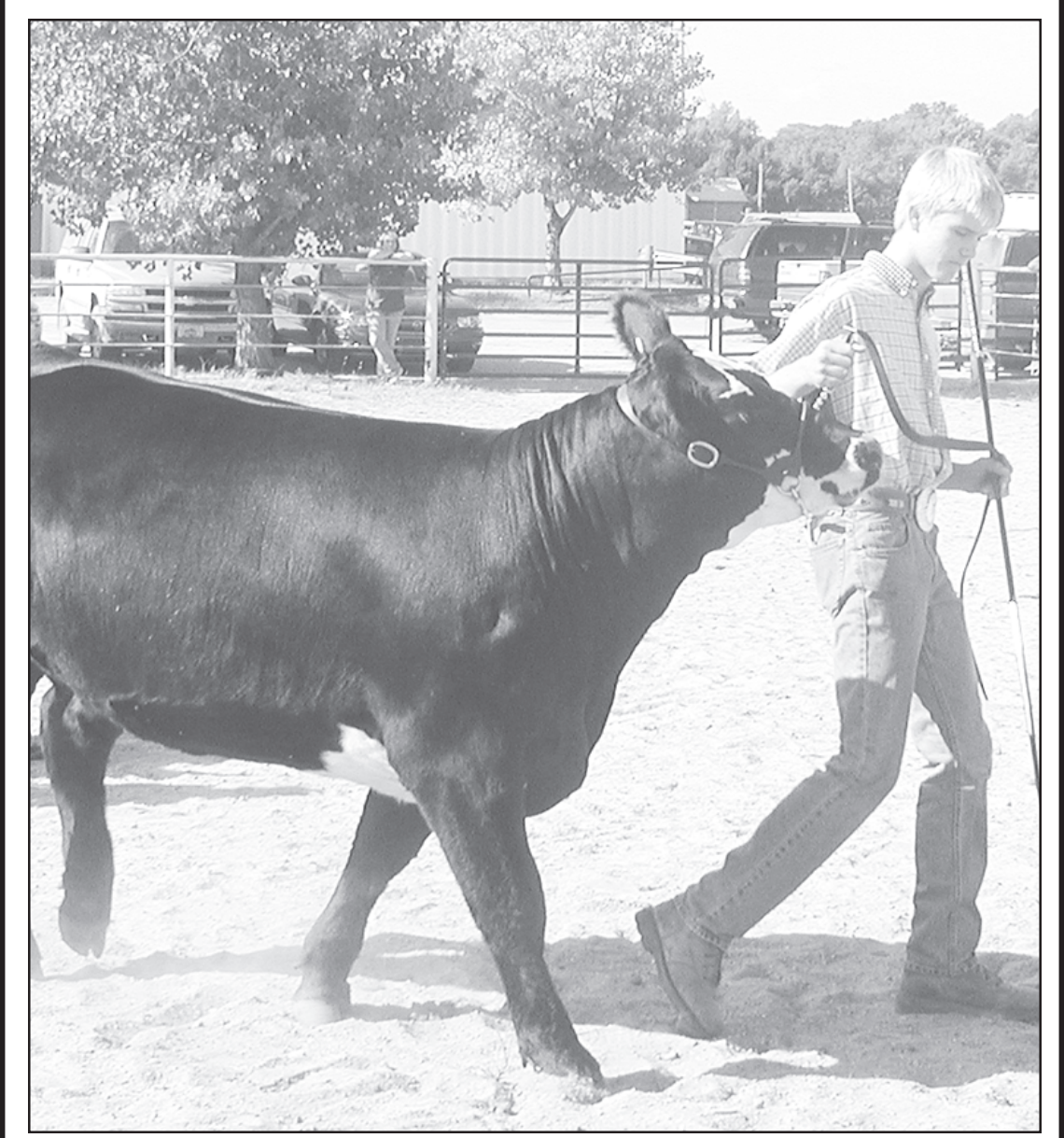
moved her family from the old sod house to this new two-story, four-bedroom house on the hill. "Did she think about the mud-covered prized Estey organ that never made music again, victim of the fury of a Kansas storm that had collapsed the sod roof and ruined things inside? Did she think of the children born in the sod house, some of them dying in infancy? Was there a smile on her face as she walked away from the old soddie and its memories, carrying her kitchen things up the steps to her fine new home?"

help in time of need, delivered babies and cared for the sick. I feel the gritty sandpaper between my fingers, and am brought back to the present job of sanding the upstairs railings. How did we come to be here in our great-grandparents' old house? I think about the answer to that question, as I straighten my back from bending over the wood. It was a chance meeting last summer while we were visiting family in St. Francis that began this journey. We had wanted to see inside a beautiful old house in town that had been for sale for a couple of years. One afternoon a

realtor friend just happened to be behind us in line at Dairy King. We asked for a tour of the old house. While walking through the house together, the realtor asked us what it was that we really wanted. Our half-joking reply was, "A house in the country with acreage" She laughed and said, "You and everybody else!" We dropped it at that, or so we thought. Several weeks after we had returned to Dallas and our jobs, an e-mail message appeared from the realtor. "The Roy Waters place is for sale!"

We read those words on the screen silently and then read them again aloud. That is our Great-Grandpa Waters' place and memories began to flood our minds. My husband and I were very excited. Here was an opportunity we had never imagined. In less than a month we had purchased the old place, making our decision to return to St. Francis and revive the 90-year-old house on the farm Great-Grandfather Fred had registered as "Grandview" in 1911. This old house is located in the Lawn Ridge Township and, according to family stories, sits on the highest spot in Cheyenne County.

From the north windows, the far bluffs of the Republican River can be seen. The picturesque barn was built in 1900. The barn doors stand shut today, but stories are told about the times when Grandpa Fred and Grandma Lizzie sat behind those doors in the buggy with Fred's favorite spirited horses snorting impatiently, waiting for one of the boys to open them so they could burst out and race to town. Today we reminisce as we clean the pine railings upstairs and hope that this old place with so many memories can be revived for others to enjoy.



GRADY BRUNK shows his heifer during the beef show during the fair. Complete details on the placings of all livestock results will appear in the After Fair supplement later. Herald staff photo by Casey McCormick

## Suicide stats continue to increase

Suicide statistics continue to increase in all areas of the United States, with the number of suicides now exceeding homicides. Many agencies and individuals in northwest Kansas work and/or live with people who are depressed and suicidal, and some who complete the act in spite of the love and support of family, friends and professionals. For many, major mental illness is a component of the problem; for others, the stress of daily living or problems in personal relationships become more than they are able to handle.

Colby meeting. The events are free and open to any agency, family or individual who would like to understand more about the signs and symptoms of suicide, intervention and prevention, as well as coping with the loss of

someone through suicide. For more information about these events, or to arrange a presentation in your area, contact Ms. Schueler or Mr. Loos at High Plains Mental Health Center, Hays office at (785) 628-2871.

## Initation held in July for Job's Daughters

Bethel 52 of the International Order of Job's Daughters held Installation of Officers at 3 p.m. on Sunday, July 23.

Following installation, a lovely tea table was hosted by Cara's family.

Cara Hunt was installed as Honored Queen, Sarah Guthmiller as Senior Princess and Taylor Kennedy as Junior Princess. The Bethel Guardian Council was also installed.

Associate Grand Guardian, Howard Morris from Wichita, Bethany Saylor, Miss Kansas Job's Daughter from Baldwin City, and many other guests were in attendance.

Karen Schueler, MS, LCPC and Ken Loos, MS, LMLP, LCP of the Consultation and Education Department of High Plains Mental Health Center will be presenting the stress, depression and suicide programs in Ness City, Quinter and Stockton, along with the

**Fun Facts**  
• There are 293 ways to make change for a dollar.  
• The first couple to be shown in bed together on prime time television were Fred and Wilma Flintstone.  
• Every day more money is printed for Monopoly than the US Treasury.  
• The Hawaiian alphabet has 12 letters.

## Order Your Tickets Today

for the  
**Chase County Fair!**  
IMPERIAL, NEBRASKA

*Don't miss this outstanding lineup of entertainment right here in your back yard! You don't have to travel far for great entertainment!*

**Order by Phone or Online**  
**800-472-FAIR**  
3247  
or [www.chasecountymfair.com](http://www.chasecountymfair.com)

**AUGUST 13-20, 2006**

**LIVE ENTERTAINMENT**  
Outstate Nebraska's Grandest Fair!  
**EXHIBITS CONTESTS DANCING**

**Chase County FAIR & EXPO**

Chase County Fairgrounds  
Imperial, Nebraska  
[www.chasecountymfair.com](http://www.chasecountymfair.com)

**Keith Anderson**  
and  
**Josh Turner**  
Fri., Aug 18,  
7:30 p.m. MT

**JoDee Messina**  
Sat., Aug. 19,  
7:30 p.m. MT

GREAT GRANDSTAND SHOWS

**NOTICE OF HEARING 2006-2007 BUDGET**  
The governing body of Unified School District 297 will meet on the 21st day of August, 2006 at 8:00 p.m., at the St. Francis Jr.-Sr. High School Library for the purpose of hearing and answering objections of taxpayers relating to the proposed use of all funds and the amount of tax to be levied. Detailed budget information (including budget profile) is available at the USD 297 superintendent's office and will be available at this hearing.  
The Amount of 2006 Tax to be Levied and Expenditures (published below) establish the maximum limits of the 2006-2007 Budget. The "Est. Tax Rate" in the far right column, shown for comparative purposes, is subject to slight change depending on final assessed valuation.

Code	2004-2005 Actual		2005-2006 Actual		PROPOSED BUDGET 2006-2007		Amount of 2006 Tax to be Levied (6)	Est. Tax Rate* (7)
	99 Line	Actual Expenditures (1)	Actual Tax Rate* (2)	Actual Expenditures (3)	Actual Tax Rate* (4)	Expenditures (5)		
<b>OPERATING</b>								
General	06	2,432,531	20.000	2,396,083	20.000	2,745,839	594,121	20.000
Supplemental General (LOB)	08	204,762	9.300	279,913	9.520	601,000	304,112	9.520
<b>SPECIAL REVENUE</b>								
Adult Education	10	0	0.000	0	0.000	0	0	0.000
Adult Supplemental Education	12	0		0		0	0	
Bilingual Education	14	0		0		0	0	
Capital Outlay	16	448,059	4.000	487,632	4.000	1,900,000	127,772	4.000
Driver Training	18	21,423		21,463		35,000	0	
Extraordinary School Program	22	0		0		0	0	
Food Service	24	246,237		243,516		360,000	0	
Professional Development	26	11,243		6,328		40,000	0	
Parent Education Program	28	0		0		0	0	
Summer School	29	0		0		0	0	
Special Education	30	210,289		225,713		450,000	0	
Vocational Education	34	40,806		39,254		60,000	0	
Area Vocational School	36	0		0		0	0	
Special Liability Expense Fund	42	0	0.000	0	0.000	0	0	0.000
School Retirement	44	0	0.000	0	0.000	0	0	0.000
Extraordinary Growth Facilities	45	0	0.000	0	0.000	0	0	0.000
Special Reserve Fund	47	0		0		0	0	
Federal Funds	07	107,936		105,439		121,390	0	
Gifts and Grants	35	0		0		0	0	
At Risk (4Yr Old)	11	0		0		0	0	
At Risk (K-12)	13	0		80,058		157,000	0	
Declining Enrollment	19	0		0	0.000	0	0	0.000
KPERS Special Retirement Contribution	51	107,098		113,178		141,472	0	
Contingency Reserve	53	50,099		62,672		62,672	0	
Textbook & Student Material Revolving	55	25,788		16,697		0	0	
Tuition Reimbursement Fund	57	0		0		0	0	
<b>DEBT SERVICE</b>								
Bond and Interest #1	62	0	0.000	0	0.000	0	0	0.000
Bond and Interest #2	63	0	0.000	0	0.000	0	0	0.000
No-Fund Warrant	66	0	0.000	0	0.000	0	0	0.000
Special Assessment	67	0	0.000	0	0.000	0	0	0.000
Temporary Note	68	0	0.000	0	0.000	0	0	0.000
<b>COOPERATIVES**</b>								
Special Education	78	0		0		0	0	
<b>TOTAL USD EXPENDITURES</b>	100	3,906,271	33.300	4,057,944	33.520	6,611,701	1,026,005	33.520
Less: Transfers	105	469,294	xxxxxx	500,782	xxxxxx	632,600	xxxxxxx	xxxxxxx
<b>NET USD EXPENDITURES</b>	110	3,436,977	xxxxxxx	3,557,162	xxxxxxx	5,979,101	xxxxxxx	xxxxxxx
<b>TOTAL USD TAXES LEVIED</b>	115	853,487	xxxxxxx	928,610	xxxxxxx	1,026,005	xxxxxxx	xxxxxxx
<b>OTHER</b>								
Historical Museum	80	0	0.000	0	0.000	0	0	0.000
Public Library Board	82	0	0.000	0	0.000	0	0	0.000
Public Library Board Employee Benefits	83	0	0.000	0	0.000	0	0	0.000
Recreation Commission	84	30,422	1.000	32,902	1.000	44,000	31,943	1.000
Rec Comm Emp Benefits & Spec Liab	86	0	0.000	0	0.000	0	0	0.000
<b>TOTAL OTHER</b>	120	30,422	1.000	32,902	1.000	44,000	31,943	1.000
<b>TOTAL TAXES LEVIED</b>	125	880,465		967,649		1,077,948		
Assessed Valuation - General Fund	128	\$24,737,850		\$26,799,879		\$29,706,063		
Assessed Valuation - All Other Funds	130	\$26,978,281		\$29,039,137		\$31,943,119		
<b>Outstanding Indebtedness, July 1</b>		2004		2005		2006		
General Obligation Bonds	135	0		0		0		
Capital Outlay Bonds	140	0		0		0		
Temporary Note	145	0		0		0		
No-Fund Warrant	150	0		0		0		
Lease Purchase Principal	153	0		0		0		
<b>TOTAL USD DEBT</b>	155	0		0		0		

\* Tax Rates are expressed in Mills  
\*\* Sponsoring District Only

\_\_\_\_\_ President  
\_\_\_\_\_ Sharon K. Olson Clerk of the Board