

Family travels in support of conservation programs

Dan and Lynn Busse of Cheyenne County, will be traveling to Washington, D.C., this week with Pheasants Forever in celebration of the 20th anniversary of the Conservation Reserve Programs. They are one of 13 families to be nationally recognized by the U.S. Department of Agriculture for their participation in Conservation Reserve Programs. Conservation Reserve Programs has played a major economic role in how the Busses' manage their native rangeland, dry cropland and irrigated cropland. Out of the 5,100 acres, they manage, 950 of them are enrolled in Conservation Reserve Programs.

"Conserving soil and other natural resources has not only meant economic benefits for us, but also better habitat for wildlife," Mr. Busse said.

He has first-hand experience seeing the effects that Conservation Reserve Programs have on wildlife. For the last 30 years he has voluntarily worked with the Kansas Department of Wildlife and Parks to

locate and identify wildlife species on his farm.

The Busses' family commitment to conservation-minded agricultural practices extends beyond their own land. Mr. Busse has also served on the Cheyenne County Conservation Board and helped to plant more than 40,000 Conservation Reserve Programs acres, including the design and implementation of numerous habitat plans. He also gives guest-lectures about the importance and practicality of conservation to agriculture-based livelihoods.

"Dan's great-grandfather homesteaded in Cheyenne County in 1885 to seek a new opportunity, and Dan moved to the county in 1970 to join in his parents family's tradition of farming and ranching," said Barth Crouch, Pheasants Forever's regional wildlife biologist for Kansas.

"CRP has allowed Dan, his wife, children and seven grandchildren to benefit a vast array of wildlife species on their land. It has also established a sustainable income for land

that has low crop productivity."

Originally established in 1985, Conservation Reserve Programs offers annual payments for 10-15 year contracts to participants who establish grass, shrub, and/or tree cover on environmentally sensitive lands. Not only have these Conservation Reserve Programs lands been shown to improve pheasant populations, but Conservation Reserve Programs is also responsible for improvements in water quality, soil erosion prevention, and the creation of critical habitat for a variety of other wildlife species.

Conservation Reserve Programs also helps stabilize farmer's incomes through annual payments and contributes billions of dollars to the economy annually from hunting expenditures; much of which benefits rural communities. Conservation Reserve Programs is administered by the Farm Service Agency and is a part of the Federal Farm Bill, which the current version of expires at the end of next year. There are currently 39.2 million acres available under Conservation Reserve Programs.



THE ACCELERATED Reading Program began on Monday. Shirley Swihart, kindergarten teacher, reads off the teams members so the students know which team they are on.

Herald staff photo by Karen Krien

Ag Talk with Jeanne

By Jeanne Falk, K-State Multi-County Agronomist

Using insecticide treatments on seed wheat can be an effective way of reducing fall infestations of greenbugs, bird cherry-oat aphids, Hessian fly, and wireworms.

Gerald Wilde, K-State field crop entomologist, says greenbugs and bird cherry-oat aphids are the vectors of barley yellow dwarf, a virus disease that is otherwise difficult to control. Barley yellow dwarf was detected in some wheat in our area last year. No variety has a high level of resistance to barley yellow dwarf, although some are more susceptible than others.

According to recent research, producers can get good fall control of the bird cherry-oat aphid and greenbug for at least 30-45 days when using the low rate of either of these seed treatments.

Cruiser at 1.0 and 1.33 ounces per 100 weight and Gaucho at 0.5 and 1.0 ounces per hundred weight had live greenbug numbers of 0, 0, 0, and 0.33 aphids per row foot. The control treatment had seven live greenbugs per row foot.

There were also parasitized greenbugs in these treatments, meaning that the beneficial insects were helping control the limited population of greenbugs present. There were 0.5, 0.33, 3.5, and 1.33 parasitized greenbugs per row foot in the insecticide treatments for Cruiser at 1.0 and 1.33 ounce per 100 weight and Gaucho at 0.5 and 1.0 ounce per 100 weight.

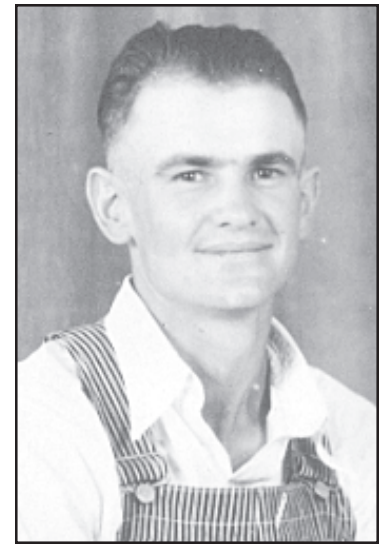
The control treatment had nearly 22 parasitized greenbugs. In addition, in 2005 and 2006 K-State tests, wheat treated with Cruiser or Gaucho had almost no greenbugs or bird cherry-oat aphids as late as the following April.

There's no guarantee that controlling these insects with seed treatments will prevent barley yellow dwarf disease, but it should help. Research on the effect of in-

secticide seed treatments on barley yellow dwarf infection is limited, but one K-State study in the 1990s showed that barley yellow dwarf infection was reduced by 50 percent when the seed was treated with Gaucho. Cruiser should have the same effect, although it was not included in that test.

Earlier planted wheat is generally more susceptible than late-planted wheat to an infestation of greenbugs or bird cherry-oat aphids, and therefore more likely to get barley yellow dwarf. The presence of volunteer wheat nearby may also increase the likelihood of greenbug and bird cherry-oat aphid infestations. In these situations, treating wheat seed with a low rate of Cruiser or Gaucho can offer fall protection.

These products have also been shown to result in lower populations of these insects the following spring. !!!Cruiser and Gaucho have been found in K-State tests to control fall infestations of Hessian fly for about 30-45 days, although the high rates of these products will have to be used to get effective control of Hessian fly. If the high rate of Cruiser or Gaucho is used, producers can also expect longer control of greenbugs and bird cherry-oat aphids.



Hilt

Card shower requested

The family of Lawrence Hilt will be honoring him with a card shower to celebrate his 90th birthday on Tuesday, Sept. 19.

Cards and memories can be sent to 523 E. 2nd, St. Francis, KS 67756.

Odd Facts

- The name Jeep came from the abbreviation used in the army for the "General Purpose" vehicle, G.P.
- No NFL team which plays its home games in a domed stadium has never won a Superbowl.
- The only two days of the year in which there are no professional sports events (MLB, NBA, NHL, or NFL) are the day before and the day after the Major League all-stars Game.
- Only one person in two billion will live to be 116 or older.
- The name Wendy was made up for the book "Peter Pan."

- The Pentagon, in Arlington, Virginia, has twice as many bathrooms as is CURRENTLY necessary. Because, when it was built in the 1940s, the state of Virginia still had segregation laws requiring separate toilet facilities for blacks and whites.
- Cost of raising a medium-size dog to the age of eleven: \$6,400
- A duck's quack doesn't echo, and no one knows why.



Truckload Meat Sale

Hilltop General Store Parking Lot

Friday, Sept. 15 • 8 a.m.-6 p.m.
Saturday, Sept. 16 • 8 a.m.-Noon

ALL NATURAL • BEEF • PORK • CHICKEN

Call Callicrate Feedyard @ 785-332-3344 with questions

On behalf of the St. Francis Community Church and our recent "Back To School Bash," we want to give a huge **THANK YOU** to all of those who so generously gave both through their involvement and financially.

Cheyenne Bowl - Bill Smith
Cheyenne Theatre - Kim Ritter
Clough Valley Baptist Church - Pastor Jason & Abby Howard
Jim & Dee Epperson
Hilltop Market - Rodney Neitzel
Living Water Fellowship - Pastor Terry & Tiffany Glasco
P&L Meat Market - Les Doggett
St. Francis Catholic Church - Father Meil
St. Francis School District - Hoagie Carmichael & Teri Richard

St. Francis Super's - Bob Weatherly
The Saint Francis Herald True Value - Pat Owens
United Methodist Church - Morita Truman
Video Connection - Barbara VanAllen
Video Kingdom - Terry Bandel
Wesleyan Community Church - Pastor Dan Carson
Word of Life Four Square Church - Pastor John Coumerilh

As well as all those who worked so hard before, during and after the event to ensure everything ran so smoothly.

Sincerely ~ Pastor David Butler
St. Francis Community Church

Activities are available on the web

Scott Carmichael, St. Francis schools principal, would like to tell followers of the schools activities, that access to the school calendar is available via the Web.

The school started posting all school related events activities last year. At this time, there have been over 6,800 access hits to view the calendar.

"It has been wonderful, and has saved valuable time in terms of answering questions by phone," Mr. Carmichael said.

Two events thus far have changed from the original school calendar. The first is for junior high activities during Homecoming Week. Only volleyball will be played at 4:30 on Tuesday, and the football has been rescheduled to 5:30 on Thursday, both being at home.

The second change is for high school wrestling on Dec. 8 and 9. St. Francis will be attending the Colby Wrestling Tournament instead of the Brush Invitational. Both of these changes are reflected on the Web-based calendar.

Directions for access are as follows:
1) Type in www.highschoolsports.net.

2) Pick the state of Kansas from the list.

3) Depending on the computer, the user will either get a drop down selection screen or will need to type in Kansas in the state selection.

4) Select Saint Francis Ks. from the school pop up list and hit return.

"You can see the events for today, tomorrow or pick for two weeks, month or any month in the school year," Mr. Carmichael said.

The Web site also has an added feature that lets the user enter their

e-mail address, and when changes are made in the event of weather or school, it will send an alert of the change to user's e-mail.

It is also helpful for people to see schedules for other towns that are listed in the Kansas list.

"This has been found to be very helpful," Mr. Carmichael said.

The school calendar can be viewed on the school web site that Kent Kechter, technology coordinator, keeps updated. That address is www.usd297.k12.ks.us.

Industrial Kitchen "Gartland" Stove

6 Burners - 2 Ovens - Griddle

First Christian Church
St. Francis
785-332-2956
Sealed Bids accepted till Sept. 30, 2006

L & L Implement Co., Inc.

Yuma, CO 970-848-5482
Wray, CO 970-332-4141

1-2004 8320, MFWD Loaded, 1,300 Hrs.	\$118,000
2- 2004 8520T, 1,179 hrs.	\$138,000
12 Row Orthman Ripper w/Western Sweeps	\$10,000
JD 9610, Loaded, Nice	\$80,000
5-JD 1760 12 Row Planters	starting at \$22,000
1996 JD 8400, 5,000 hrs...., loaded	\$72,000
1-2004 8320 MFWD, Nice, 1,100 hrs.	\$22,000
JD 2003 4710 Sprayer, Loaded	CALL
12 Row 8530 Orthman Cultivator w/Tracker Guidance	\$10,500
2001 1254 Ro-Gator w/ 100' Booms	\$94,500
1998 JD 7200 24 Row W/ Liq-Fert., Insecticide Boxes	\$49,500

MachineFinder™ <http://www.machinefinder.com>

GOOD SAMARITAN VILLAGE

St. Francis, KS

CAREER OPPORTUNITIES

The Good Samaritan Village is needing motivated individuals for

C.N.A. OPPORTUNITIES.

Free Training Offered. Career advancement possible. Present openings include the 6 a.m. to 2 p.m. and 10 p.m. to 6 a.m. shifts, home health aide and homemakers.

Interested persons please contact Janet Siegfried, R.N.; Vickie Reuber, R.N.; or Richard Reeser, ADM.

The Good Samaritan Village is an equal opportunity employer and provides services to qualified individuals without regard to race, color, sex, age, national origin, religion or disability.

"Equal Employment Opportunity Employer — M/F/Vet./Handicap"

Union Pacific Hiring Fair (KPA) 2X6.5