

Baby Photo
Album or
Picture
Frame



SCHULTZ'S LTD.

785-332-2833
114 W. Washington ~ St. Francis

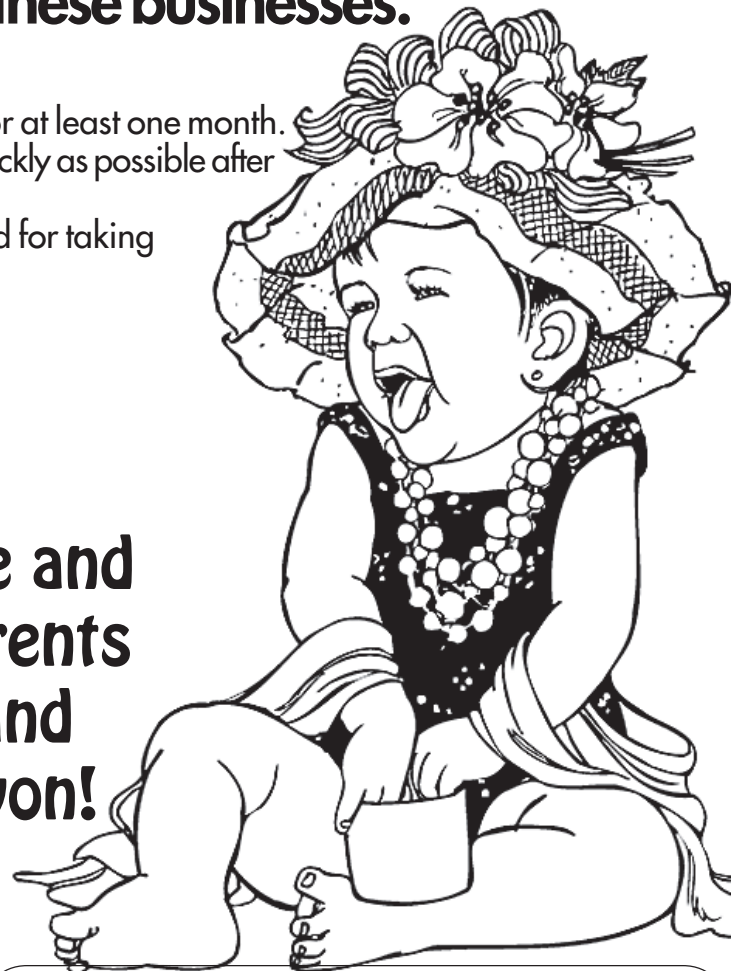
FIRST BABY CONTEST

We're celebrating the first special delivery of the Year 2007!
The winning baby and parents will receive these bundles
of gifts, courtesy of these businesses.

Parents Rules:

1. The parents must have lived in Cheyenne County for at least one month.
2. The Saint Francis Herald office must be notified as quickly as possible after the birth. The Herald's number is 785-332-3162.
3. A 60-day limit following the baby's birth is required for taking advantage of these outstanding gifts & services.

Happy Birthday to the
2006 First Babies,
Jazmin Raine & Havon Jade and
congratulations to their parents
Damon & Billie Rickard and
big brothers Kadon & Devon!

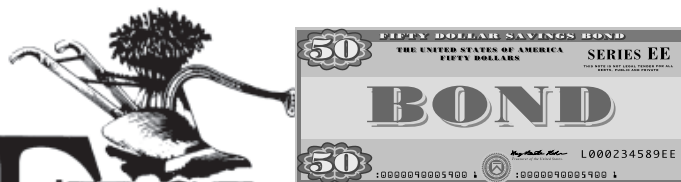


Two Bottles
of
Champagne

**Burr
Retail Liquor**

785-332-2172
Hwy. 36 ~ St. Francis

\$50 Savings
Bond

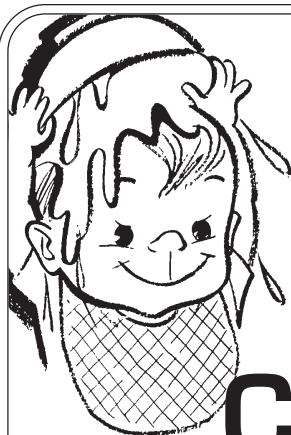


**FIRST
NATIONAL BANK**
www.fnb.com



"Where The Employees
Are The Owners"

Bird City, Colby, Goodland, Kirk,
Oberlin, Quinter, Sharon Springs
& ST. FRANCIS



\$25
Gift
Certificate

Hilltop
General Store

Open 7 Days
a Week
7 a.m.-7 p.m.

785-332-2277

Hwy. 36 & Benton Street ~ St. Francis

FREE
FULL
Car Wash!



**ST. FRANCIS
EQUITY**

785-332-2421
105 S. River ~ St. Francis

Baby
Gift

**OWENS
True Value**
Help Is Just Around The Corner.

785-332-2411
113 E. Washington
St. Francis



Spinal
Adjustment
for Mommy & Baby
plus ... a tube of
Biofreeze

POLING

Chiropractic & Family Health Center
785-332-3105
709 S. Benton
St. Francis

\$50
SAVINGS
BOND



**BANKWEST
OF KANSAS**



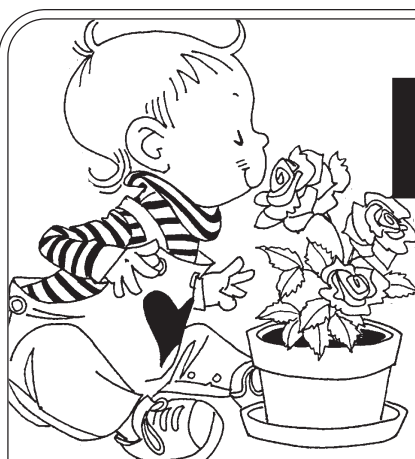
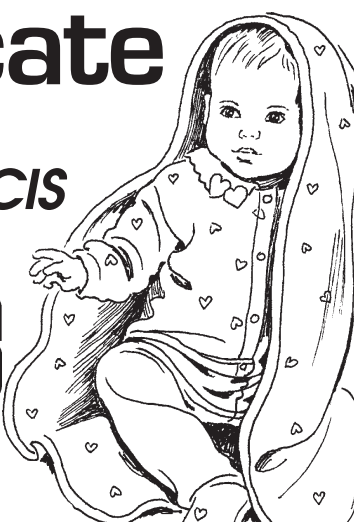
785-332-3333
121 Washington • St. Francis
Other Locations
Colby • Goodland • Idalia, CO

\$25 Gift
Certificate

ST. FRANCIS

SUPER'S

785-332-2064
120 E. Washington
St. Francis



Baby
Gift

**Krien
Pharmacy**

785-332-2177
105 W. Washington ~ St. Francis

FREE
Subscription

to the:

**The Saint Francis Herald
or Bird City Times**

785-332-3162
310 W. Washington ~ St. Francis

