

GARAGE SALES

ESTATE SALE: Saturday, May 7th from 8 a.m. to ? and Sunday, May 8th from 10 a.m. to 3 p.m.. Brewster, south side of Highway 24. Chairs, sofa sleeper, TV, Maytag washers, dryer, records, mirrors, tables, camping equipment, Honda mower, self propelled, tablecloths, bedding, tires (235/55 R19), antiques.

Community garage sales in Sharon Springs. Saturday, May 7th from 8 a.m. to noon.

MULTI FAMILY GARAGE SALE - Saturday, May 7, 8 a.m.-5 p.m., 102 S. Graves, Norton. Multi shelves of books, desks, dishes, knick-knacks, XXL women clothes, gas stove-\$250, gas dryer-\$100, recliner-\$100, small round trampolines, baby/kids/women/men clothing, scrub outfits.

College Students, Decent furniture for your dorm, very low prices. 785-443-5889.

NOTICES

Taking orders to build CRP watering facilities - guzzler and Tonutti 12 wheel ground driven hay rake for sale. 785-322-5280.

Large selection of beautifully arranged silk flowers for sale in an adjustable frame for the top of tombstones. Call (785) 890-2733. Lois Sieck. G 4/27-5/27

DIXIE'S GREENHOUSE. Open April 19, 9:30 a.m. to 6 p.m.. Tuesday-Friday. Contact number (785) 821-0437 or leave message (785) 852-

4776.3 miles south of Sharon Springs, KS, Hwy. 27. G 4/27-5/4

Spring Cleaning? Carpet Cleaning - 3 rooms, only \$149.95! Dry-Foam and Green Seal safe. Servicing NWKS mileage free since 1987! A+ Cleaners 785-538-2526 or 785-443-5400, Johnene Cheney.

\$Make More Money \$Consign... Don't Auction!! Quit paying storage, clean out your garage. 785-443-5889. - C 10/6-TFN -

HELP WANTED

HELP WANTED: Sheridan County Health Complex is seeking a self motivated, detail oriented professional to lead the long term care nursing staff. We are looking for an RN with the leadership skills to coach and motivate or nursing staff to improve patient safety and quality of care. The Chief Nursing Of-

ficer we are looking for has a management style that engages staff in active on-the-unit problem solving and is an articulate, approachable clinician who can work with a variety of staff, physicians and physician extenders. SCHC includes an 18 bed critical access hospital, 38 bed long term care facility, 8 assisted living apartments, one health clinic, and a satellite clinic. We offer competitive salary and benefit package. For an application, please contact Linda Taylor, HR Director 785-675-2331 X113 or email to ltaylor@sheridan.hpmin.com or download an application at <http://www.sheridan-countyhospital.com>. - O 5/4-5/11 -

HELP WANTED at Truck Town in the refurbishing bay for hard working self-motivated individual. Detailing and washing trucks, customer service, chrome installation, and light mechanic work. CDL a plus. Experience in repairs also necessary. Clean and friendly work environ-

ment with good hours, good pay, and benefits available. Apply in person or send resume to Truck Town, 105 W. Horton Ave, Colby, KS 67701, 785-460-8785. - C 5/4 - 5/11 -

Batch manager for concrete plant. Experience helpful, but not required. Will train right person. Must have CDL or be able to obtain one within 60 days. Need to be personable and dependable. Pay based on experience. Insurance available. Contact Dan at Hoxie Concrete, 1759 E Rd 80 N, Hoxie, KS 67740, Phone 785-675-3121. - C 5/4 - 5/11 -

Meat Department, full-time must be over 18 yrs old. Willing to train. EOE Call 785-671-3205 or pick up application at Oakley's IGA, 127

WANTED Concrete Truck Drivers. CDL Required. Call (785) 899-6535 or (719) 346-8806

Sales Career
Are you looking for a meaningful and rewarding career? Consider a career that offers:
Income
Unlimited income potential, outstanding compensation/training program with monthly business development allowances, extensive benefits package.
Impact
Play a vital role in families' and businesses' financial well-being. Impact individuals and communities with fraternal programs.
Independence
Build a business for yourself and control your career destiny.
Modern Woodmen
FRATERNAL FINANCIAL
Modern Woodmen, one of the nation's largest fraternal financial services providers, is looking for self-motivated individuals with or without sales experience in the (city or county) area. Call (800-0000) or send resume to (Manager's name and address).
www.modern-woodmen.org

Converse Ave, Oakley, KS 67748. - C 5/4 - 5/11 -

PERSONAL ASSISTANT PARAPROFESSIONAL Full, Part-time and Substitute Positions in Atwood. We know you have been thinking about a rewarding career with a family oriented agency. We are looking for you! We are looking for reliable, caring individuals to teach daily living skills such as cooking,

shopping, recreation and hygiene to individuals with developmental disabilities. Applicants should possess a valid Kansas driver's license and a good driving record. Must pass KBI, SRS, and Child/Adult abuse checks. To apply contact: Prairie Developmental Center, 208 S. 4th Street, Atwood, KS 67730, (785)626-3688 or apply on-line at www.DSNWK.org

- C 5/4 - 5/11 -

Help Wanted

As United Plains Ag continues to grow, we have a full-time position available.

Custom Applicator/Agronomy Operations

Apply at United Plains Ag or contact Tim Darst 620-376-4799 or 620-376-8607



ADM-Northern Sun
6425 Road 14
Goodland, KS 67735
785-899-3700

Production Operators

ADM-Northern Sun is currently taking applications for full-time production rotating shift operators for our sunflower processing plant with benefits. Full-time employees rotating shifts include weekends. We are also taking applications for part time without benefits. Part-time employees work Monday - Friday and weekend hours as needed. Part time employment could lead to full time productions shift operator position.

- Medical/Prescription/Dental Insurance
- Life Insurance
- Disability Insurance
- Flexible Spending Accounts
- Credit Union
- 401K
- Hourly rate for permanent full time \$11.51-14.86 (includes rotating shift differential)
- Part-time \$10.08 per hour.
- Overtime available based on job requirements
- Wellness Program
- Advancement Opportunities
- Pre-employment drug testing
- Drug free workplace
- Work-Life Program
- Paid Vacation
- On the job training given

We are looking for motivated, responsible people with a willingness to learn and the desire to advance within our company. Applicants must be dependable and a team player. Applicants must have a valid photo I.D. an original Social Security Card or original birth certificate. Women and minorities are encouraged to apply. Applications packets are available to be picked up at ADM-Northern Sun between the hours of 7:00 a.m. and 4:00 p.m. Monday through Friday. We are located 5 miles West of Goodland on Hwy. 24 turn north at Caruso. ADM is an equal opportunity employer.

*Do you want to move home?
Are you looking for a steady job?*
BEARDSLEY EQUITY CO-OP
has a full-time position with benefits.
Apply in person at
Beardsley Elevator, 785-538-2386
*This may be the opportunity
you've been waiting for.*

2 Production Positions Open

The Grinnell Locker is looking for two people to work in production. We are a mid-sized meat processing plant located on I-70 at exit 85, one hour west of Hays. Grinnell, KS is a small community where the cost of living is low. The Grinnell Locker can provide a steady income with set hours. We offer above average wages plus bonus for good production, cafeteria plan, vacation pay, and a retirement plan. Work hours would be 8 a.m. to 6 p.m. Monday thru Friday and 8 a.m. to 12 p.m. on Saturday. Please call toll free at 1-800-272-1411 for more information and an application.

2 Positions Available

As United Plains Ag continues to grow, we have two full time positions available.
Grain Operations Specialist
Truck Driver, Grain, Fertilizer & Seed

Apply at United Plains Ag or Contact:
Pat Peterson @ 785-821-1167
Eric Starns @ 620-376-8633



HELP WANTED

Goodland 24/7 Store is accepting applications for maintenance and cashier positions. Please apply in person at 2710 Commerce Rd., Goodland, KS.



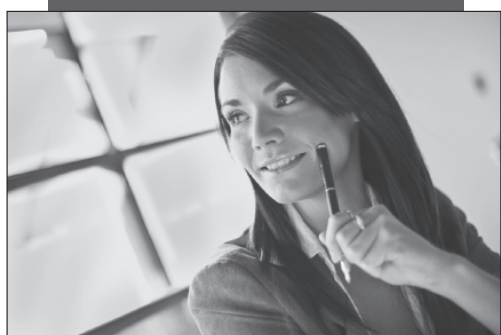
Help Wanted

Ad Designer

The Oberlin Herald, an award-winning weekly newspaper, is looking for a **FULL OR PART-TIME AD DESIGNER.**

Knowledge of InDesign preferred.

Call Cynthia Haynes, Publisher or Kim Davis, Assistant Publisher for more information at 785-475-2206.



THE OBERLIN HERALD

170 S. Penn. • Oberlin, KS • 785-475-2206



ABSOLUTE REAL ESTATE AND PERSONAL PROPERTY AUCTION

Edward Ciboski Estate
Saturday, May 14th at 519 West 9th, Goodland, KS
Starting at 10 a.m. MDT
REAL ESTATE SELLS AT 1:30 PM • OPEN HOUSE Tuesday, May 3rd 5-7 p.m.

TRACT 1: 519 West 9th, Goodland, KS.
Legal: Lots 17, 18, East 5' Lot 19, Block 12, 1st Addition
2010 Taxes: \$730.26
Lot size: 55 x 140
Home has 925 sq ft per floor W/ 3 bedroom, 1 bath, living room and kitchen on main floor and a full unfinished basement. Hardwood floors in kitchen and bedrooms. Single attached garage.



TRACT 2: Vacant lot West of 519 West 9th, Goodland, KS.
Legal: East 20' of lot 19, All of lots 20 & 21, Block 12, First Addition
2010 Taxes: \$147.24
Lot size: 70x140
Vacant lot with 18' x 30' double garage.

TERMS: \$2,500 down day of auction as earnest money with balance due at closing on or before May 31st, 2011. 2011 taxes shall be prorated to date of closing. Cost of title insurance and closing fees shall be paid 1/2 by seller and 1/2 by buyer. Sale cannot be subject to buyer financing. All financing arrangements should be completed prior to auction. Property is being sold in its "AS-IS condition" Homestead Realty & Auction is a representative of the seller and shall not represent the buyers. For more information or to view the property contact Terry Richardson 785-899-2328 or 899-8094.

VEHICLES, MOTORHOME, BOAT, MOWERS: 1996 Winnebago Adventure 34' motor home, single slide out, 454 motor, dual a/c, TV, showing only 8,667 miles, like new; 1994 Lincoln Town Car, loaded, 106,000 miles; 1980 Honda Gold Wing, Aspencade, saddle bags, windshield; 1985 Kawasaki 250 motorcycle, only 855 actual miles, like new; 1975 Glastron 18' boat with Mer Cruiser I/O 188hp motor; JD model Z 225 Zero turn riding mower, catcher, 18.5 hp motor, only 2 years old. **HOUSEHOLD:** Matching sofa and love seat; Recliner; Swivel rocker; Rocker; Dining room table; Nice oak office desk W/right hand return; Matching glass front book case; 2 bedroom sets W/double beds, dressers W/mirrors, chests; Maytag Gemini glass top stove; Whirlpool side-by-side refrigerator W/ice maker; Maytag portable dishwasher; Gibson chest deep freezer; Panasonic microwave; Kenwood stereo component system; Ant writing desk; Kimball organ; Gun case; Lots of shelving; Small computer desk; Singer sewing machine W/cabinet; Singer portable sewing machine; Kirby vacuum; Exercise equipment; Dresser; Rival meat slicer; George Foreman grill; Bissell Vacuum; Floor fans; Hydrator; Ant oil lamp; Ant heating stove; Many boxes of misc house hold items; Boxes of cookware; 12 place setting of Schefield-Elegance pattern china; Glass ware; Silverware. Partial list only. **Many more items!**



TOOLS, MOWERS, MISC: Craftsman 10' table saw; Dremel scroll saw; Shop vac; B&D cordless 12V driver; Paslode impulse cordless nailer; Smith cutting torch W/acetylene & oxygen bottles; Trojan II 5hp roto tiller; Toro ST 830 snow blower; Lawn King riding mower; Several boxes of hand tools; Tool chest; Solar battery charger; Workmate work bench; 15' extension ladder; Weed eater; Leaf blower; Remington chain saw; Garden tools; Air bubble.

Partial list only. Lunch will be served. For more information contact Terry Richardson, Broker/Auctioneer at Homestead Realty & Auction 1023 Main, Goodland, KS. 785-899-2328 or 899-8094. www.goodlandhomestead.com



TERRY RICHARDSON
OWNER/BROKER/AUCTIONEER
auctions@goodlandhomestead.com
785-899-2328 or 800-974-2426
www.goodlandhomestead.com