

**GARAGE SALES**

**Edson, KS** community garage sales. Many locations around town. 27 from noon to ?? and the 28th from 8 a.m. to ?? Antiques and collectibles, books, records, appliances, pyrex, granite slabs, dress form, sport cards, sewing notions, cookbooks, furniture, old license plates, crochet magazines, pots and pans, highchairs, limestone, children through adult clothing, M Moline G 706 Propane, old pop bottles and jars, and so much more!

**GARAGE SALE** - Multi-family, Saturday May 28th. 8:00am till noon 710 E Ash, Oberlin

**GARAGE SALE** - 305 S. Wabash, Norton, 8:00 a.m. Saturday, May 28. Household items, tools, clothes.

**NOTICES**

**For Sale by sealed bids:** 2003 Agco Tye 2015 Drill and 1990 Kawasaki Bayou ATV. Items are sold as is and are available for viewing during regular business hours M-F 8 a.m. - 4 p.m. at 915 E. Walnut, Colby KS. The Thomas County Conservation District Board of Supervisors reserves the right to reject any or all bids. Please mail or deliver bids to 915 E. Walnut, Colby KS. Bid deadline is 4 p.m. June 3, 2011.

**Come check out our great selection of cards.** Office Works & Home Furnishings, 960 S. Range, 785-462-2222 or toll free 1-800-559-6757.

**Desktop & laptop computers,** printers, digital copiers,

jump drives, scanners, LCD displays, wireless routers, camera memory readers, Ethernet cables, printer cables, computer accessories, also computer desks, desk chairs, and chair mats available at Office Works & Home Furnishings, 960 S. Range, 785-462-2222 or toll free 1-800-559-6757.

- C 5/25-6/1 -

**Inkjet & laser printer supplies** in stock for Hewlett Packard, Epson, Canon, Samsung, Brother, and Lexmark printers. We also stock a wide range of printer & photo papers. Office Works & Home Furnishings, 960 S. Range, 785-462-2222 or toll free 1-800-559-6757.

- C 5/25-6/1 -

**Attention! CHS All Sports Booster Club** is accepting bids from any group or organization to run the concession stand this fall at football games. Great fundraising opportunity. Bids will be accepted until May 31st. Contact Tracy at 785-462-0489 for more details.

- C 5/18-5/25 -

**"It's grilling season"** Stock up now on our many specialty items, bratwursts, pork burgers, bacon & cheese burgers, summer sausages, polish sausage, & of course our lean ground beef patties, steaks & roasts. By the pound or by the side. Ben-Lee Processing, Inc. "USDA" We process your meat the way you want it. N. Hwy 25, Atwood, KS., 785-626-3732.

- C 5/18-5/25 -

**Large selection of beautifully arranged silk flowers** for sale in an adjustable frame for the top of tombstones. Call

(785) 890-2733. Lois Sieck. G 4/27-5/27

**Spring Cleaning?** Carpet Cleaning - 3 rooms, only \$149.95! Dry-Foam and Green Seal safe. Servicing NWKS mileage free since 1987! A+ Cleaners 785-538-2526 or 785-443-5400, Johnene Cheney.

- C 4/6-5/25 -

**HELP WANTED**

**Days Inn, Colby** now hiring front desk 3 - 11 p.m. shift. Must be reliable, friendly and able to work weekends. Apply in person.

- C 5/25 -

**USD 275 Triplains** is advertising for a Paraprofessional for the 2011 - 2012 school year. Benefits include a 4-day school week, and a health insurance package. Please send letter of application and resume to Dave Porter, Superintendent of Schools, USD 275, P.O. Box 97, Winona, KS 67764, or contact him at 785-846-7869. Deadline for applications is June 10, 2011. USD 275 Triplains is an Equal Opportunity Employer.

- C 5/25-6/1 -

**Accepting applications** for Bagger/Warehouseman for agriculture business. Experience in grain elevator helpful. For interview call Sunrise Staffing Services, LLC at (620) 792-1004 or pick up application at the SunOpta Plant in Goodland.

G 5/25-5/25

**Quality Inn of Colby, KS** is looking for friendly and qualified individuals for all positions. Pay based on qualifications. Apply in person at 1950

S. Range Ave. - C 5/18-TFN -

**Murphy Tractor, a leading John Deere construction**

equipment dealer, is looking for a full-time field service technician to perform repairs/maintenance on all makes of construction equipment

in Colby, KS area. Submit resume via fax 308-534-7022 or email dengler@murphytractor.com.

- C 5/18-5/25 -

**Are you wanting to travel this Memorial Day weekend with the Family, but the vehicle you have now can only hold 2 people and a six pack of Coke? Then stop by Vince's GM Center and check out our Great selection of SUV's, with up to \$3000.00 customer Cash or 0% APR on select GM Models. Have a Great weekend and remember our loves one's.**



**2011 Cadillac Escalade ESV, White Diamond, Leather, Dvd Player**



**2010 Chevy Tahoe, Silver, Cloth, DVD Player**



**2011 Chevy Suburban, Black, LTZ, DVD Player**



**2011 GMC Yukon Denali, Red Jewel, Heated & Cool Seats, DVD Player**

*Thought to ponder....Do cows have calf muscles?*

**VINCE'S GM CENTER**

"Selling Cars for Years....Making Friends For Life."

**719-346-5541 • 800-231-8991**

**We Look Forward To Serving You**

1697 Rose Ave., Burlington, Colorado

www.vincesgmc.com

**PUBLIC AUCTION**

Machinery-Vehicles- Shop-Furniture-Household-Antiques-Collectables-Coins-Misc.

**Sat., June 4, 2011**

10:00 a.m. CST

Auction Location:

4-H Building, N. Hwy 25, Atwood, KS

Vehicles and Machinery will sell at 1:00 p.m.



Case 2096 FWD, 5.9 liter 184 x 38 Rear, 14.9 x 28 Fronts, 9937825, Cab, AC, 3pt., (654lbs.)



J.D. 4020 Diesel, 3pt., PTO, (S#49176), w/LD. 48 Ldr.



Oliver 70 Industrial w/Loader, PTO, (runs good)



2000 Buick Le Sabre, Custom Loaded, 62,870 act. mi.



1998 Mercury Grand Marquis, LS, 78,567 act. mi.



1985 Chevy 3/4 ton, Auto Trans. NH 679 Manure Spreader, (excellent)



1980 Tow Right 20" Gooseneck Tandem Axle, Dove Tail, Ramps, 6000# Axles



1965 Chevy 60 Truck w/4sp., 2sp., 15' B&H, 6 cyl. Engine, 43,509 act. mi. (nice)



6-8 x 16 Utility Trailer, Steel Floor Powder River Squeeze Chute



36" Windmill Tower w/Baker Head IH 1190 9' Swather



16" IH Disc Hyd. w/Harrows Flex-King 2-5' 6" Sweep w/Pickers



J.D. 4 Bottom Plow, 3pt. Tire Scratcher, 3pt.



6 x 16 Stock Trailer Hesston 5585 Round Baler, Twin Tie, (S#00950)



Round Bale Spear, (fit J.D. Ldr.)



6 Assort. 38" Plywood Winco 20,000 watt Generator, PTO, w/Trailer



IH 9' Manure Spreader 2 Section Springtooth



B.J. Round Bale Unroller, Hyd. Round Baler Mover, Elect. Winch



Hesston 5500 Round Baler, (S#3393) J.D. 14' Cultivator

Paint Gun AC Gauges, (R12, R22)

4" Grinder

Log Chains

3-Chain Hoists

Pipe Wrenches

Splitting Stand, (fits J.D. 4010-4020)

Elect. Water Heater

1 1/2" PVC Pipe

Assort. Nuts & Bolts

Torch Cart w/Gauges & Hose

Pipe Cutter-Threader

Assort. Gear Pullers

Punches & Chisels

Impact Wrench

Roll Pin Punches

1/2" Drill

Box End Wrenches

Elect. Motors

Wiscon. Engine, 10hp

12 volt Drill

Engine Stand

3-Spool Elect. Hyd. Valve

Handyman Jack

12-2 Elect. Wire

2 3/8" Well Pipe

4-6" Tires w/wheels, (new)

8-16" Tires, (used)

Assort. of Tires, (all sizes new & used)

16 RR Ties

2 Well Dogs

Rope Pulleys

Wooden Block & Tackle

5-Sheets 1/2" Plywood

35-12 x 2" Oak, Tin

40-12 x 2" Corrugated Tin

15-10' Galv. Tin

Scrap Aluminum

PU Tool Box

Propane Heater, (20,000 btu)

Propane Bottles

Chain Breaker

2-Wet Legs

Exit Cords

12v Fertilizer

Door Hinges

Yard Gate

2-Air Bubbles

3pc. Qu. Size Bedroom Set

3pc. Qu. Size Bedroom Set

3pc. Dbl. Size Bedroom Set

Couch

Large Boy Recliner, (like new)

Recliner Lift Chair

Lift Chair

3-Swivel Rockers

Armoire, Floor Mirror (handmade)

Whirlpool Refrigerator

Whirlpool Washer & Dryer

Estate Refrigerator

GE Cook Elect. Stove

Book Case

Office Desk

File Cabinets

5-Steery Safes, (model #s 1250, 1100, 1310, 1310, 1170)

Islander SPA, 6-person, (nice)

Kenmore Microwave

DVD Player

Record Players

Typewriters

Environmental Air Systems

Humidifier

Dehumidifier

3' Trampoline

Picture

Wall Hangings

2-Microwave Stands

Foot Stools

Bentley Floor Clock

2-Seving Machines

Heater

Kitchen Aide Mixer w/bowl

Roasters

Blender

Silverware

Assort. of Dishes

Coffee Pots

Knife Sets

Assort. of Cups & Glasses

Lots of Pots & Pans

Snack Sets

Cookbooks

Water Purifier

Bedding

Pillows

Blankets

Lamps

Christmas Tree

Christmas Dec.

Books

Records

3-Kirby Vacuums watt.

Umbrellas

Elect. Heater

Puzzles

Games

Poker Chips

Folding Chairs

Costume Jewelry

Sewing Supplies

Samsontite Luggage

E.g. Assort. of Linen

Slide Projector

Canning Jars

Sears Massager

Globe

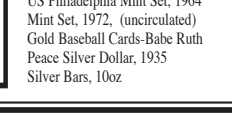
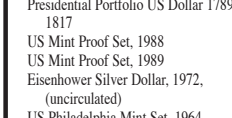
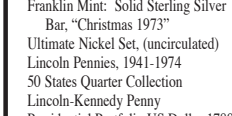
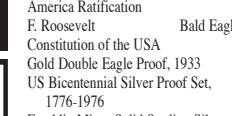
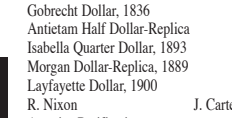
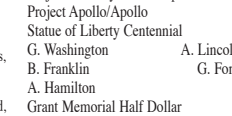
1-Row Cultivator watt.

1-Row Horse Plow

2-Wet Legs

Dining Room Table

5-Solid Oak Chairs



*Light the way to a cure*

Keep the fire of hope burning by purchasing a luminaria candle in memory of someone lost to cancer, in honor of someone still fighting, or in special recognition of someone who has beaten this dreaded disease.

**RELAY FOR LIFE OF SHERMAN COUNTY**

Friday & Saturday - June 3 & 4  
7 p.m. to 7 a.m.  
at the High School Track behind Vo-Tech

Complete this form and send it along with your donation to:  
The Goodland Star-News, 1205 Main Avenue, Goodland, KS 67735

Name: \_\_\_\_\_  
Address: \_\_\_\_\_  
City: \_\_\_\_\_  
Daytime Phone: \_\_\_\_\_

Please join us for the luminaria ceremony at 9 p.m.  
\$10.00 per luminaria please!

In honor of \_\_\_\_\_  In memory of \_\_\_\_\_  
 In honor of \_\_\_\_\_  In memory of \_\_\_\_\_  
 In honor of \_\_\_\_\_  In memory of \_\_\_\_\_

Total Enclosed: \_\_\_\_\_  
Make checks payable to: The American Cancer Society

