

**SEED WHEAT**

**Certified Fuller Wheat.** Also T-158, T-136, T-129, and T81-SV. Carl Wahlmeier, 785-678-2476 or cell 785-678-7126. - N 10/26 -

**Seed Wheat for Sale**-KCIA Certified Seed Wheat - AGRI PRO TAM 111, POST ROCK and newly released SY GOLD, also FULLER. Paul Nauer, 785-678-2339 or cell 785-678-8083. - N tfn -

**SEED WHEAT FOR SALE** - CERTIFIED Fuller wheat. Also T-158, T-136, T-129, and T-81SV. Carl Wahlmeier, 785-678-2476 or cell 785-678-7126. - N 10/31 -

**FOR SALE**

**Heavy duty commercial** batteries and top quality filters for most everything on your farm at factory direct prices at Colby Ag Center 785-462-6132. - 10/26-1-11 -

**Beautiful pellet stove** and stack - 12' 785-687-4780. - 10/26 -

**205/75/14 tires**, 4 brand new and 4 used, \$400. 785-332-6425.

□ SF 10/26 □

**Two Sega Genesis** game stations with 25 plus games. \$100 OBO. (785) 890-7224. G 8/3-tfn

**Firewood for Sale** - Cured Hardwood Firewood, \$200 a cord. Delivered in Norton area. Rototilling, \$40 minimum. 785-877-2771, Bryan Keiswetter. - N 11/9 -

**For Sale** - Excellent JD 653A Row Head. 785-693-4481. - N 10/26 -

**Two Angus Breeding Bulls**, one 4 year-old, one 5 year-old. Gentle, nice bulls. \$2,500 each. Dave Yost. 785-332-3351 - SF 10/26 & 11/2 -

**Rubber stamps**, custom made, The Country Advocate, 1205 Main. Goodland, Kansas. (785) 899-2338.

**AUCTION SERVICE**

**McEwen Auction-Duane-Darlene.** 601 East Holme, Norton, Kansas 67654, Phone 785-877-3032. Experienced in all types of Auctions. Computer clerking and settlement. Real Estate Salesperson and Listing Agent for Metcalf Real Estate -N tfn -

**KANSAS CLASSIFIEDS**

**Auctions**

Public Auction Oct. 29, National Guard Armory, 1021 N. State, Iola, KS. Collectibles: Fenton, Lead Crystal, Fostoria, Precious Moments, Cherished Bears, Denim Days, eggs, dolls, more. <http://www.allencountyauktion.com>www.allencountyauktion.com

**Career Opportunity** AIRLINES ARE HIRING - Train for high paying Aviation Career. FAA approved program. Financial aid if qualified - CALL Aviation Institute of Maintenance. 888-248-7449.

**Career Opportunity** ALLIED HEALTH career training - Attend college 100% online. Job placement assistance. Computer available. Financial Aid if qualified. SCHEV certified. Call 800-481-9409 <http://www.CenturaOnline.com>www.CenturaOnline.com

**Career Opportunity** ATTEND COLLEGE ONLINE from Home. \*Medical \*Business \*Paralegal, \*Accounting, \*Criminal Justice. Job placement assistance. Computer available.

Financial Aid if qualified. Call 888-220-3977 <http://www.CenturaOnline.com>www.CenturaOnline.com

**For Sale**

**WE HAVE A PIANO FOR YOU!** New & Pre-owned pianos from top-quality brands. Grands, Verticals, and Digitals available! Choose from over 100 high-quality instruments. 800-950-3774 <http://www.piano4u.com>www.piano4u.com

**Help Wanted**

Top Pay On Excellent Runs! Regional Runs, Steady Miles, Frequent Hometown, New Equipment. Automated Detention Pay! CDL-A, 6mo. Ex-

perience required. EEOE/AAP 866-322-4039 <http://www.Drive4Marten.com>www.Drive4Marten.com

**Help Wanted/Truck Driver**

CDL Jobs available! Receive Class A CDL training-Accredited, PTDI certified school. 18+, job placement, Pell grant/Stafford loan, housing, transportation available. Contact Jamie 515-574-1964.

**Help Wanted/Truck Driver**

Drivers HOME WEEKLY-Regional and OTR Available. Late model equipment. Special pneumatic & belt

trls. Great Pay/Benefits! Call Kevin 316-263-3400 x 211 <http://www.ctsco.com>www.ctsco.com

**Help Wanted/Truck Driver**

"You got the drive, We have the Direction" OTR Drivers APU Equipped Pre-Pass EZ-pass Pets/passenger policy. Newer equipment. 100% NO touch. 1-800-528-7825

**Manufactured Homes** MUST BE SOLD! All display manufactured Homes. Save thousands \$\$\$\$. Have property within 100 miles of Topeka and need a new home? Call Now- 785-862-0321



**(785) 462-8255**  
www.HomeLandRE.com

An Affiliate of  


<p><b>NEW LISTING</b></p>  <p><b>1285 Lue Drive</b> 3 BR/3 Bath Call Pat today!</p>	<p><b>FAMILY READY</b></p>  <p><b>460 Arrowhead</b> 4 BR/2 Bath Give Pat a call today!</p>
<p><b>START HERE</b></p>  <p><b>445 W. 6th</b> 4 BR/2 Bath Give Pat a call today!</p>	<p><b>READY FOR YOU</b></p>  <p><b>280 E. 4th</b> Big opportunity at small cost Call our office today!</p>
<p><b>MOVE IN READY</b></p>  <p><b>865 S. Garfield</b> 2 BR/1 Bath-Garage Call Rock today!</p>	

Pioneer II Sub. Lots \$12,000	915 Mentlick CONTRACT	565 N. Mission Ridge \$110,000
El Chaparral Add. Lots \$18,000	540 W. 4th \$82,000	905 S. Range \$112,500
411 Illinois, Brewster CONTRACT	210 S. Franklin CONTRACT	210 Iowa, Brewster \$115,000
410 Converse, Oakley CONTRACT	112 Manchester, Brewster \$89,900	265 W. Summit CONTRACT
865 S. Garfield \$67,500	255 N Garfield \$104,500	1800 Harvey Court \$129,900
1135 W. 6th \$72,000	945 Mentlick \$109,500	1160 Wheatridge \$209,500
560 N. Lincoln CONTRACT	460 W. 4th CONTRACT	

**WE WANT YOUR LAND LISTINGS - "WE SELL"**

2-6 acre lots located along I-70 frontage. Give Marilyn a call today!!  
 115 N. Kansas, Selden, KS Turn-key business. Southwind Steakhouse & Saloon \$135,000 Call Rock today!  
 1690 W. 4th, Colby, KS Well maintained dental office with over 2,100 sq. ft. \$160,000 Give Marilyn a call today!  
 217 Center, Oakley, KS Our Place-restaurant with all equipment included. \$180,000 Give Jerry a call today!  
 1675 W. 4th, Colby, KS Use the warehouse and let the office lease help with payments. \$195,000 Call Pat for details!  
 111 W. 3rd, Oakley, KS 10,000+ square ft building with an excellent tenant & great cash flow. \$210,000 Call Rock!  
 Commercial lot 6.7 acres adjacent to Wal-Mart with I-70 frontage, Colby, KS \$569,500 Call Rock!  
 Commercial lot 10 acres North of Interstate between Franklin & Country Club Drive East of Bourquins. (Can be split) Call Tom!

See how our nationwide property advertising, websites and exclusive real estate catalogs can find buyers. From homes, land, recreational, investment, retirement, ranches, farms or business.

Pat Sloan (785) 443-3261	<b>1055 S. Range Colby, KS</b> www.HomeLandRE.com	Rock L. Bedore (785) 443-1653
Marilyn Meyer (785) 462-2703		Tom Harrison (785) 443-0136
Toni Lindberg (785) 443-4032		Jerry Wycoff (785) 672-0429

**Stop throwing away your money!**

ADVERTISE WITH US!

**The Goodland Star-News**  
1205 Main, Goodland, KS  
(785) 899-2338

**The Country Advocate**

**COLBY FREE PRESS**  
155 W. Fifth Colby, KS  
(785) 462-3963

**Bird City Times**  
Box 220, Bird City, KS  
(785) 734-2659

The Country Advocate is DIRECTLY MAILED to nearly 20,000 households in Northwest Kansas, Eastern Colorado and Southwestern Nebraska.

**THE OBERLIN HERALD**  
170 S. Penn Ave., Oberlin, KS  
(785) 475-2206

**THE NORTON TELEGRAM**  
215 S. Kansas, Norton, KS  
(785) 877-3361

**The Saint Francis Herald**  
Box 1050, St. Francis, KS  
(785) 332-3162

We'll help you sell your stuff! Call us today!

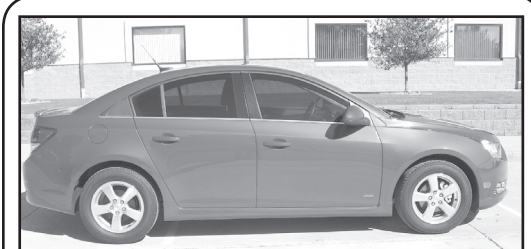
**F. G. D. Going on now at Vince's GM Center. That's right Frightfully Good Deals..with up to \$4505 Customer cash or 0% up to 72 months on select models. We also have a great selection of pre-owned vehicle's..**



**2011 Chevy 3/4 Ton Crew Cab, Diesel, Black, Leather, LTZ PKG (New)**



**2011 GMC 1/2 Ton Crew Cab, White, Cloth, All Terrain PKG (New)**



**2011 Chevy Cruze, Red, Cloth, Xm Radio, (Pre-Owned)**



**2010 Chevy Suburban, Gold, Leather, Sunroof, Dvd Player (Pre-Owned)**

thought to ponder...If you bear a child, why do you have a cow?

**VINCE'S GMC CENTER**

We Look Forward To Serving You  
1697 Rose Ave., Burlington, Colorado  
www.vincesgmccenter.com

719-346-5541 • 800-546-5541

**November Consultant Schedule**

ALLERGIST**	Jeffrey Rumblyrt, M.D.	November 21
CARDIOLOGIST	Barry Smith, M.D.	November 9 & 23
CARDIOLOGIST	Vijay Subbarao, M.D.	November 10
CARDIOLOGIST**	Christine Fisher, M.D.	November 14
COUNSELING SERVICES	Thursdays by Appointment	
DIETITIAN	Sarah Linton, RD, LD, CDE	Monday - Friday
EARS, NOSE, THROAT	Alfred N. Carr, M.D.	November 10 & 11
ENDOCRINOLOGIST	Gerald Poticha, M.D.	November 10, 11 & 18
GASTROENTEROLOGIST	Jeffrey D. Huston, M.D.	November 8, 21 & 22
GENERAL SURGEON	David D. Beck, M.D.	November 3 & 17
GENERAL SURGEON	Jeffrey Cross, M.D.	November 10
GYNECOLOGY	Laura Rokosz, M.D.	November 2 & 30
NEUROLOGIST	Steven J. Gulevich, M.D.	November 2, 9, 23 & 30
OBSTETRICS/GYNECOLOGY	David Forschner, M.D.	November 16
ONCOLOGY	Prakash Neupane, M.D.	November 4, 11 & 18
ONCOLOGY/HEMATOLOGY	Martin Rubinowitz, M.D.	November 1
OPHTHALMOLOGIST	Brian Joondeph, M.D.	November 16
OPHTHALMOLOGIST	Ronald Wise, M.D.	November 4 & 18
OPHTHALMOLOGIST**	Eric Fry, M.D.	November 10 & 30
OPHTHALMOLOGIST	Robert Fante, M.D.	December 16
ORTHOPEDIST	Tim Birney, M.D.	November 14
ORTHOPEDIST	Armond Hatzidakis, M.D.	December 5
ORTHOPEDIST	James Holmes, M.D.	November 21
ORTHOPEDIST	Edward Parks, M.D.	November 28
ORTHOPEDIST	Raj Bazaz, M.D.	November 14
ORTHOPEDIST	Kevin Nagamani, M.D.	November 2 & 30
ORTHOPEDIST	Gareth Shemesh, M.D.	November 17 & 18
PATHOLOGIST	Pathology Services P.C. Call for Availability	
PODIATRIST	Erik Ouderkirk, D.P.M.	November 9
PODIATRIST	Daniel Mallett, D.P.M.	November 23
PULMONOLOGIST	Ken Weisiger, M.D.	November 17
RADIOLOGISTS	Professional Radiology Services WEEK DAYS	
SPEECH THERAPY	Crystal Schultz	Monday - Thursday
UROLOGIST**	Kevin McDonald M.D.	November 8
UROLOGIST**	Wallace Curry, M.D.	November 22

\*\*For an appointment with the Allergist please call 1-888-849-8424  
 \*\*For an appointment with Dr. Fry please call 1-800-526-3937  
 \*\*For an appointment with Dr. Fisher please call 1-888-625-4699  
 \*\*For an appointment with Dr. McDonald or Dr. Curry please call 1-877-312-1619

Goodland Family Health Center, 106 Willow Road • (785) 890-6075  
 Monday - Friday, 8:30 a.m. to 5 p.m.  
 Walk-in Clinic M-F 8:30 a.m. to 9:30 a.m.  
 Saturday Clinic 9:00-11:00 a.m.  
 Dr. Mohedine Shafei (Out of office on Monday)  
 Dr. Travis Daise (Out of office on Wednesday)  
 Dr. David Younger (Out of office on Thursday)  
 Dr. Lisa M. Unruh - Pediatrician (Out of office on Tuesday)  
 Jackie Jorgensen, ARNP  
 Kathy Wiley, APRN

